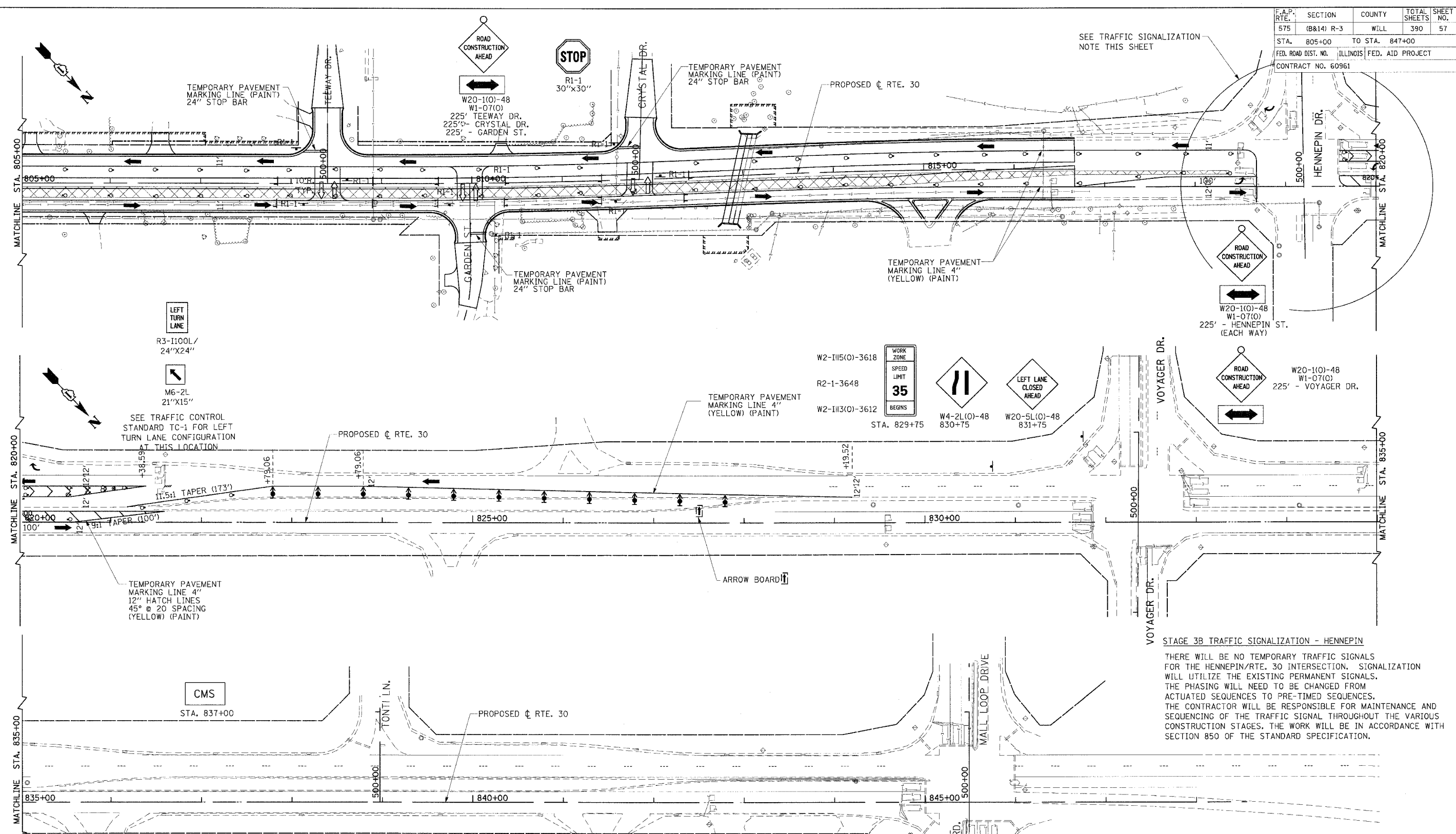


F.A.P. RTE.	SECTION	COUNTY	TOTAL SHEETS	SHEET NO.
575	(B&I) R-3	WILL	390	57
STA. 805+00		TO STA. 847+00		
FED. ROAD DIST. NO.		ILLINOIS FED. AID PROJECT		
CONTRACT NO. 60961				



**STAGE 3B TRAFFIC SIGNALIZATION - HENNEPIN**

THERE WILL BE NO TEMPORARY TRAFFIC SIGNALS FOR THE HENNEPIN/RTE. 30 INTERSECTION. SIGNALIZATION WILL UTILIZE THE EXISTING PERMANENT SIGNALS. THE PHASING WILL NEED TO BE CHANGED FROM ACTUATED SEQUENCES TO PRE-TIMED SEQUENCES. THE CONTRACTOR WILL BE RESPONSIBLE FOR MAINTENANCE AND SEQUENCING OF THE TRAFFIC SIGNAL THROUGHOUT THE VARIOUS CONSTRUCTION STAGES. THE WORK WILL BE IN ACCORDANCE WITH SECTION 850 OF THE STANDARD SPECIFICATION.

TEMPORARY PAVEMENT MARKINGS				PAVEMENT MARKINGS REMOVAL			
4" LINE	YELLOW	PAINT	1368 L.F.	WORKZONE STAGE 3A		1319.5 S.F.	
4" LINE	WHITE	PAINT	258 L.F.	TEMPORARY PAVEMENT			
24" LINE	YELLOW	PAINT	53 L.F.	NONE THIS SHEET			

REVISIONS	
NAME	DATE

ILLINOIS DEPARTMENT OF TRANSPORTATION

**MAINTENANCE OF TRAFFIC PLAN VIEW STAGE 3B**

SHEET 23 OF 26

SCALE: VERT. NONE  
 HORIZ. 1"=50'  
 DATE: 3/1/05

DRAWN BY: SNH  
 CHECKED BY: SBP

**CMT**  
 CRAWFORD MURPHY & TILLY, INC.  
 CONSULTING ENGINEERS  
 SPRINGFIELD, IL ■ AURORA, IL ■ ST. LOUIS, MO

I:\data\000602\draw\tr\sheet\mat3b\_3.dgn