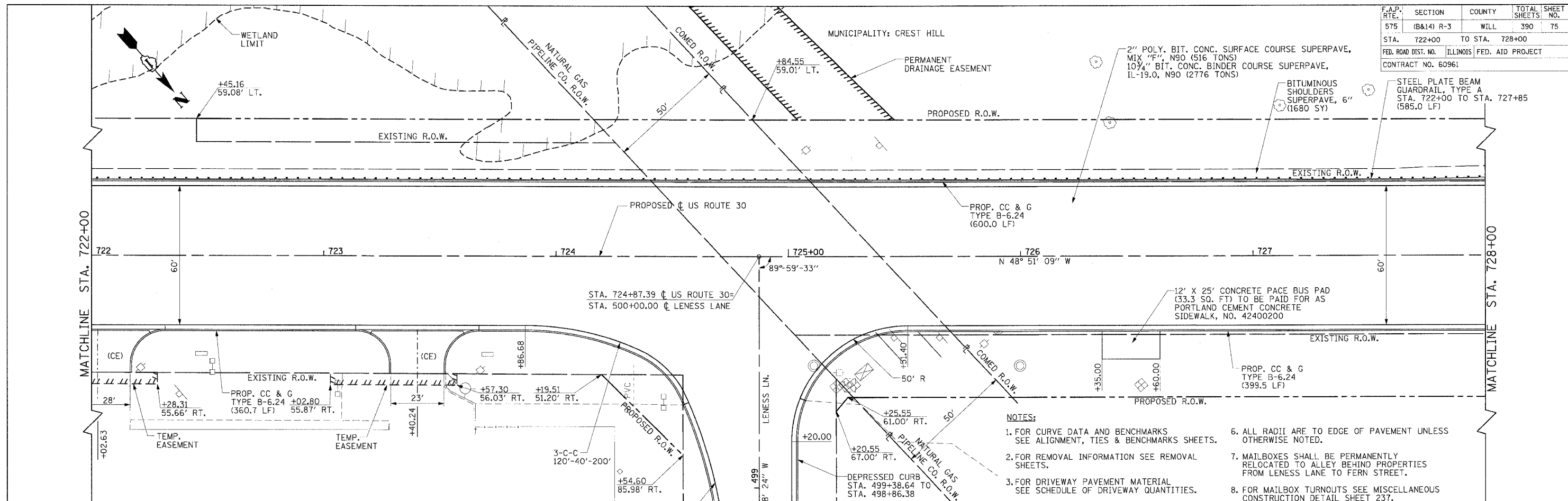
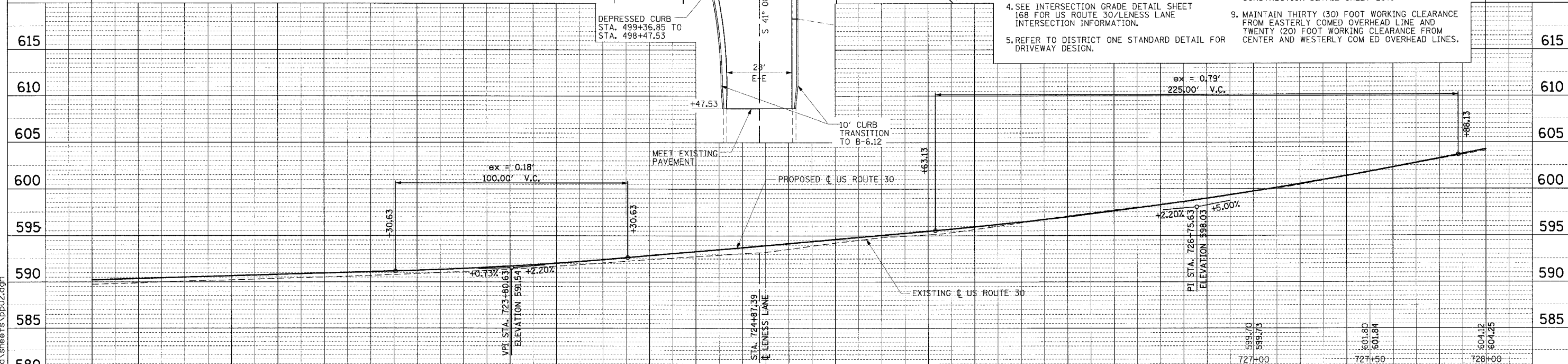


F.A.P. RTE.	SECTION	COUNTY	TOTAL SHEETS	SHEET NO.
575	(B&I4) R-3	WILL	390	75
STA. 722+00 TO STA. 728+00				
FED. ROAD DIST. NO.		ILLINOIS FED. AID PROJECT		
CONTRACT NO. 60961				



- NOTES:**
- FOR CURVE DATA AND BENCHMARKS SEE ALIGNMENT, TIES & BENCHMARK SHEETS.
  - FOR REMOVAL INFORMATION SEE REMOVAL SHEETS.
  - FOR DRIVEWAY PAVEMENT MATERIAL SEE SCHEDULE OF DRIVEWAY QUANTITIES.
  - SEE INTERSECTION GRADE DETAIL SHEET 168 FOR US ROUTE 30/LENESS LANE INTERSECTION INFORMATION.
  - REFER TO DISTRICT ONE STANDARD DETAIL FOR DRIVEWAY DESIGN.
  - ALL RADII ARE TO EDGE OF PAVEMENT UNLESS OTHERWISE NOTED.
  - MAILBOXES SHALL BE PERMANENTLY RELOCATED TO ALLEY BEHIND PROPERTIES FROM LENESS LANE TO FERN STREET.
  - FOR MAILBOX TURNOUTS SEE MISCELLANEOUS CONSTRUCTION DETAIL SHEET 237.
  - MAINTAIN THIRTY (30) FOOT WORKING CLEARANCE FROM EASTERLY COMED OVERHEAD LINE AND TWENTY (20) FOOT WORKING CLEARANCE FROM CENTER AND WESTERLY COMED OVERHEAD LINES.



PLAN

DESIGNED BY	DATE
CHECKED BY	
NOTED BY	
NO. 1	

PROFILE

DESIGNED BY	DATE
CHECKED BY	
NO. 1	

REVISIONS

NAME	DATE
AMB	12/21/04

ILLINOIS DEPARTMENT OF TRANSPORTATION  
**PLAN & PROFILE**  
**US ROUTE 30**  
 SHEET 2 OF 22



SCALE: VERT.: 1"=5'  
 HORIZ.: 1"=20'  
 DATE: 3/1/05  
 DRAWN BY: SNH  
 CHECKED BY: AMB/KDF

H:\dot\0006602\draw\bid\sheet\pp02.dgn