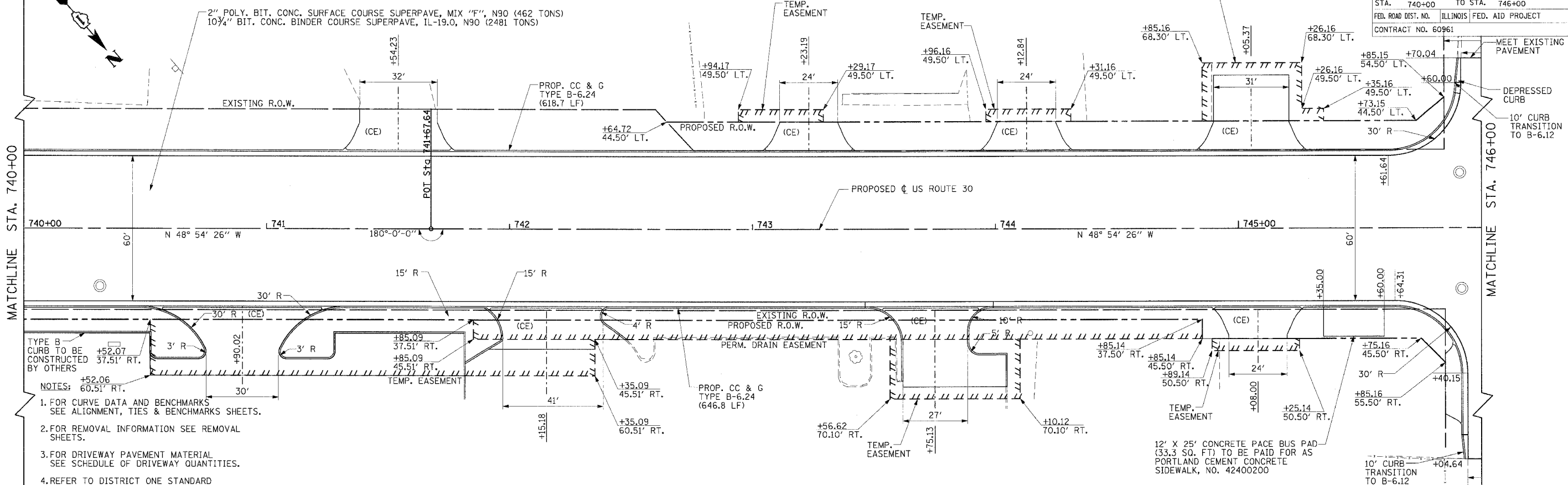
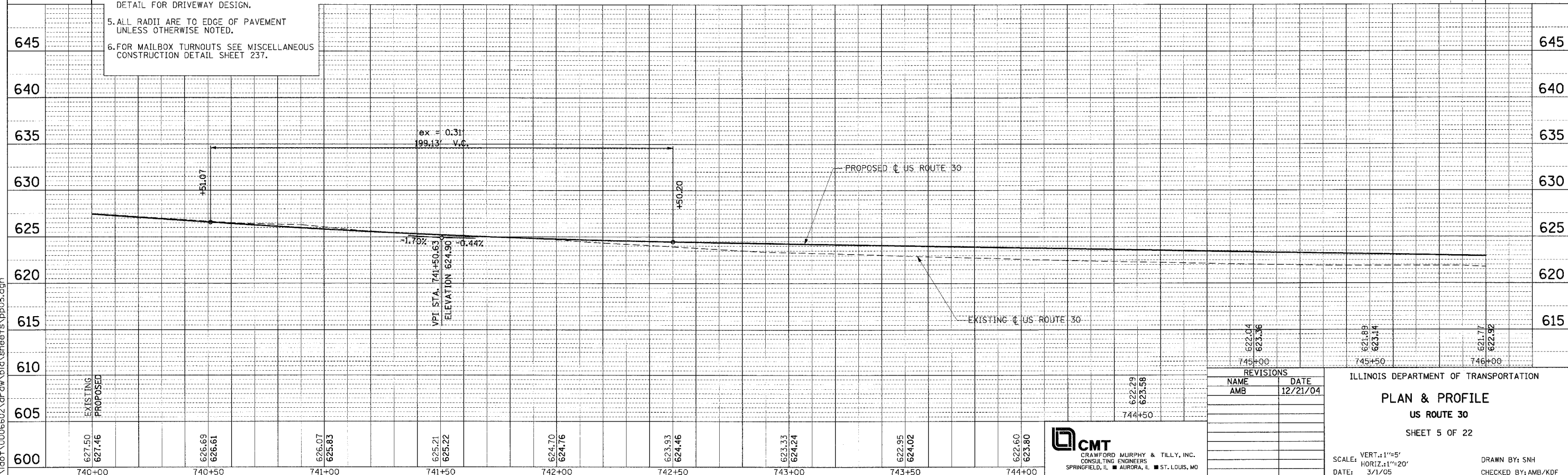


MUNICIPALITY: CREST HILL

F.A.P. RTE.	SECTION	COUNTY	TOTAL SHEETS	SHEET NO.
575	(B&I4) R-3	WILL	390	78
STA.	740+00	TO STA.	746+00	
FED. ROAD DIST. NO.	ILLINOIS FED. AID PROJECT			
CONTRACT NO. 60961				



- TYPE B CURB TO BE CONSTRUCTED 37.51' RT. BY OTHERS
- NOTES:
1. FOR CURVE DATA AND BENCHMARKS SEE ALIGNMENT, TIES & BENCHMARKS SHEETS.
  2. FOR REMOVAL INFORMATION SEE REMOVAL SHEETS.
  3. FOR DRIVEWAY PAVEMENT MATERIAL SEE SCHEDULE OF DRIVEWAY QUANTITIES.
  4. REFER TO DISTRICT ONE STANDARD DETAIL FOR DRIVEWAY DESIGN.
  5. ALL RADII ARE TO EDGE OF PAVEMENT UNLESS OTHERWISE NOTED.
  6. FOR MAILBOX TURNOUTS SEE MISCELLANEOUS CONSTRUCTION DETAIL SHEET 237.



REVISIONS	
NAME	DATE
AMB	12/21/04

ILLINOIS DEPARTMENT OF TRANSPORTATION

**PLAN & PROFILE**

**US ROUTE 30**

SHEET 5 OF 22

SCALE: VERT.: 1"=5'  
HORIZ.: 1"=20'

DATE: 3/1/05

DRAWN BY: SNH  
CHECKED BY: AMB/KDF

**CMT**  
CRAWFORD MURPHY & TILLY, INC.  
CONSULTING ENGINEERS  
SPRINGFIELD, IL ■ AURORA, IL ■ ST. LOUIS, MO

PLAN	DATE
REVISION	BY
ALTERNATE	CHECKED
NOTE BOOK	DATE
NO.	FILE NAME

PROFILE	DATE
REVISION	BY
CHAINS	CHECKED
NOTE BOOK	DATE
NO.	FILE NAME

N:\dot\0006602\draw\bid\sheet5\pp05.dgn