

MUNICIPALITY: CREST HILL

F.A. RTE.	SECTION	COUNTY	TOTAL SHEETS	SHEET NO.
575	(B&I) R-3	WILL	365	83
STA. 768+00		TO STA. 774+00		
FED. ROAD DIST. NO.		ILLINOIS FED. AID PROJECT		
CONTRACT NO. 60961				

EXIST. CURVE EX-15
 PI STA. = 769+81.88
 $\Delta = 2^\circ 23' 15''$ (RT)
 $D = 1^\circ 25' 57''$
 $R = 4,000.00'$
 $T = 83.35'$
 $L = 166.67'$
 $E = 0.87'$
 P.C. STA = 768+98.53
 P.T. STA = 770+65.20

LEGEND

- 3/4" POLYMERIZED LEVELING BINDER (MACHINE METHOD), SUPERPAVE, IL-4.75, N50
- 1/2" POLYMERIZED BITUMINOUS CONCRETE SURFACE COURSE, SUPERPAVE, MIX "F", N90

3/4" POLYMERIZED LEVELING BINDER (MACHINE METHOD)
 SUPERPAVE, IL-4.75, N50 (289 TONS)
 1/2" POLY. BIT. CONC. SURFACE COURSE, SUPERPAVE,
 MIX "F", N90 (578 TONS)

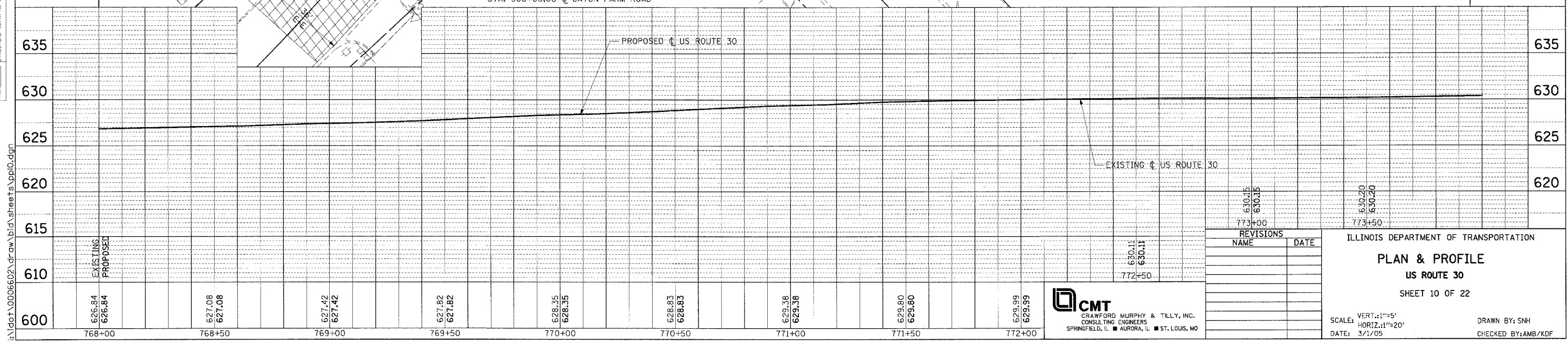
**END MILLING & RESURFACING
 BEGIN RECONSTRUCTION
 STA. 773+99.76**

NOTES:

1. FOR CURVE DATA AND BENCHMARKS SEE ALIGNMENT, TIES & BENCHMARK SHEETS.
2. FOR REMOVAL INFORMATION SEE REMOVAL SHEETS.
3. FOR DRIVEWAY PAVEMENT MATERIAL SEE SCHEDULE OF DRIVEWAY QUANTITIES.
4. REFER TO DISTRICT ONE STANDARD DETAIL FOR DRIVEWAY DESIGN.
5. ALL RADII ARE TO EDGE OF PAVEMENT UNLESS OTHERWISE NOTED.

PLAN	DATE
BY	
REVISIONS	
NO.	

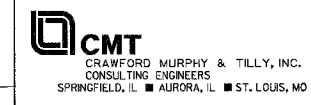
PROFILE	DATE
BY	
REVISIONS	
NO.	



REVISIONS	
NAME	DATE

ILLINOIS DEPARTMENT OF TRANSPORTATION
PLAN & PROFILE
US ROUTE 30
 SHEET 10 OF 22

SCALE: VERT.: 1"=5'
 HORIZ.: 1"=20'
 DATE: 3/1/05
 DRAWN BY: SNH
 CHECKED BY: AMB/KDF



I:\dot\0006602\draw\bid\sheet\sp10.dgn