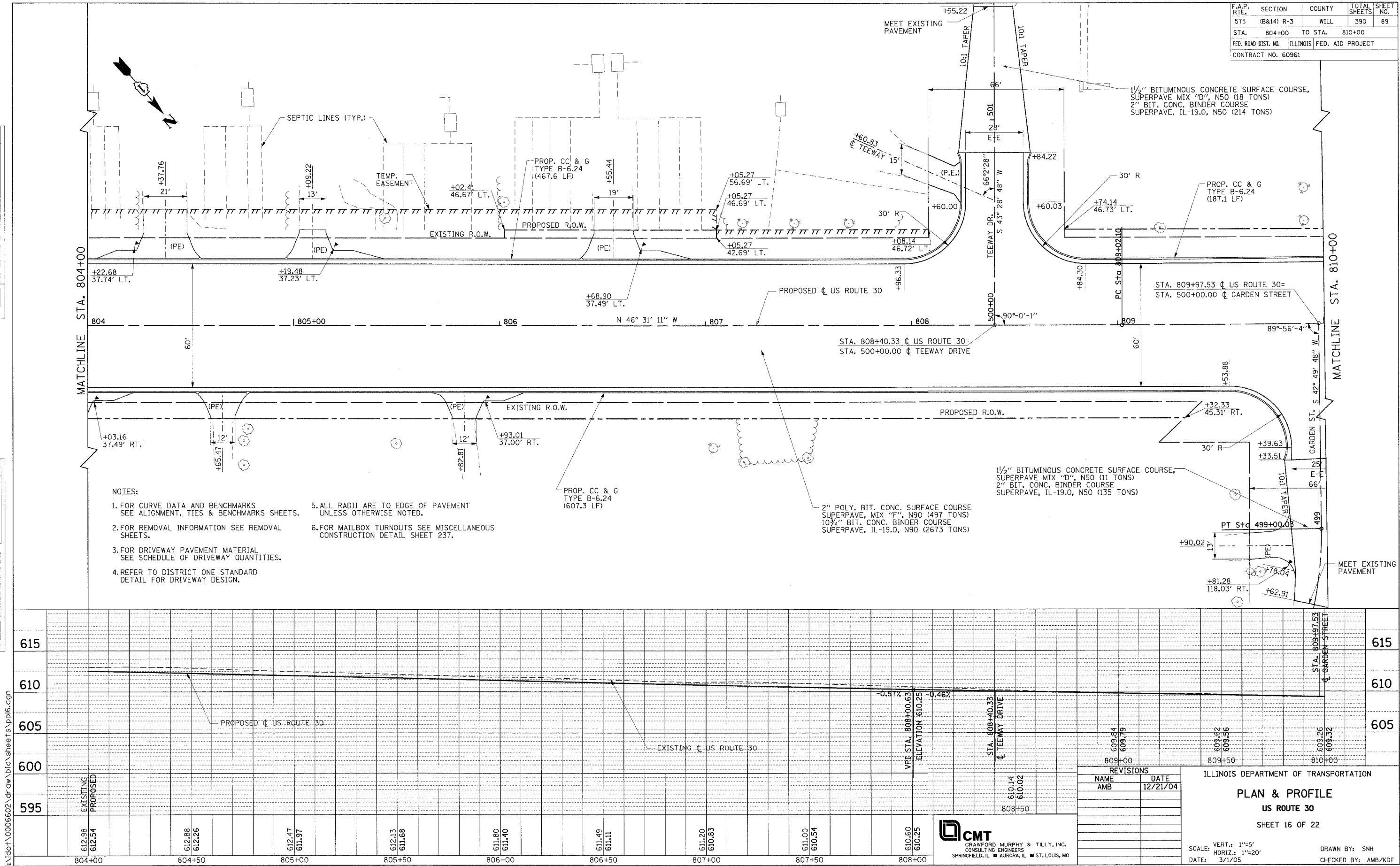


F.A.P. RTE.	SECTION	COUNTY	TOTAL SHEETS	SHEET NO.
575	(B&I4) R-3	WILL	390	89
STA. 804+00		TO STA. 810+00		
FED. ROAD DIST. NO. ILLINOIS FED. AID PROJECT				
CONTRACT NO. 60961				

DATE	BY
DESIGNED	BY
PLOTTED	BY
APPROVED	BY
NOTE BOOK NO.	NO.
DATE FILED	NO.

DATE	BY
DESIGNED	BY
PLOTTED	BY
APPROVED	BY
NOTE BOOK NO.	NO.
DATE FILED	NO.



- NOTES:**
- FOR CURVE DATA AND BENCHMARKS SEE ALIGNMENT, TIES & BENCHMARKS SHEETS.
 - FOR REMOVAL INFORMATION SEE REMOVAL SHEETS.
 - FOR DRIVEWAY PAVEMENT MATERIAL SEE SCHEDULE OF DRIVEWAY QUANTITIES.
 - REFER TO DISTRICT ONE STANDARD DETAIL FOR DRIVEWAY DESIGN.
 - ALL RADII ARE TO EDGE OF PAVEMENT UNLESS OTHERWISE NOTED.
 - FOR MAILBOX TURNOUTS SEE MISCELLANEOUS CONSTRUCTION DETAIL SHEET 237.

REVISIONS	
NAME	DATE
AMB	12/21/04

ILLINOIS DEPARTMENT OF TRANSPORTATION
PLAN & PROFILE
US ROUTE 30
 SHEET 16 OF 22

SCALE: VERT.: 1"=5'
 HORIZ.: 1"=20'
 DATE: 3/1/05

DRAWN BY: SNH
 CHECKED BY: AMB/KDF

CMT
 CRAWFORD MURPHY & TILLY, INC.
 CONSULTING ENGINEERS
 SPRINGFIELD, IL ■ AURORA, IL ■ ST. LOUIS, MO

I:\dot\0006602\draw\bid\sheet\vp16.dgn