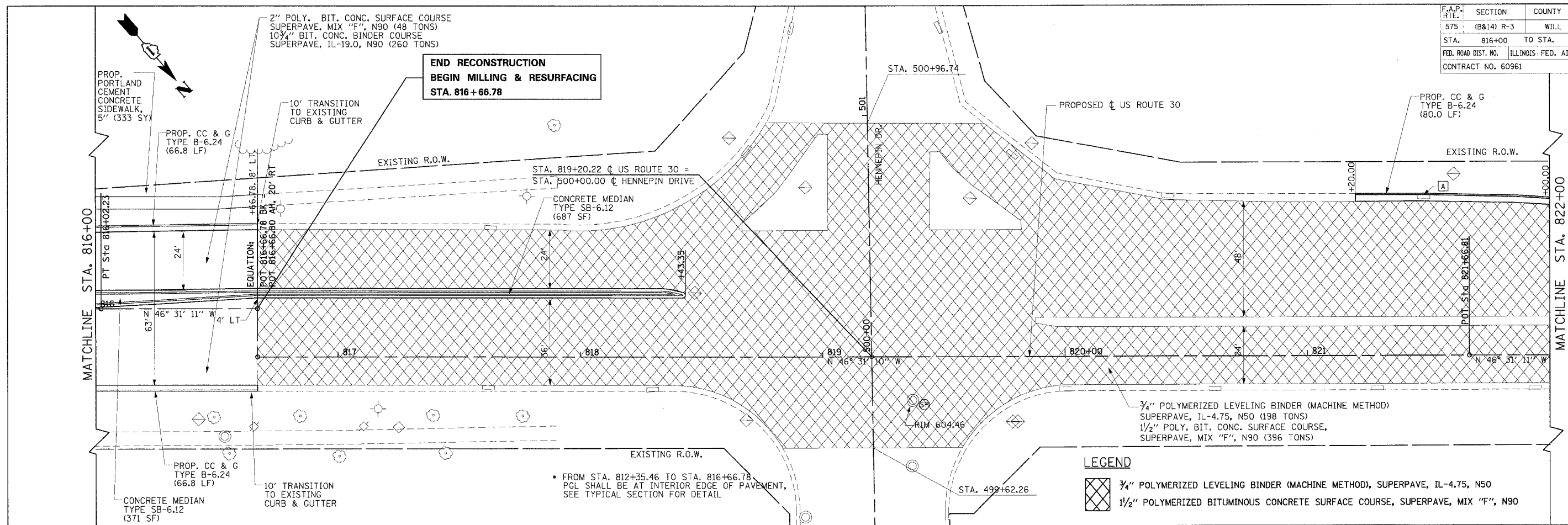
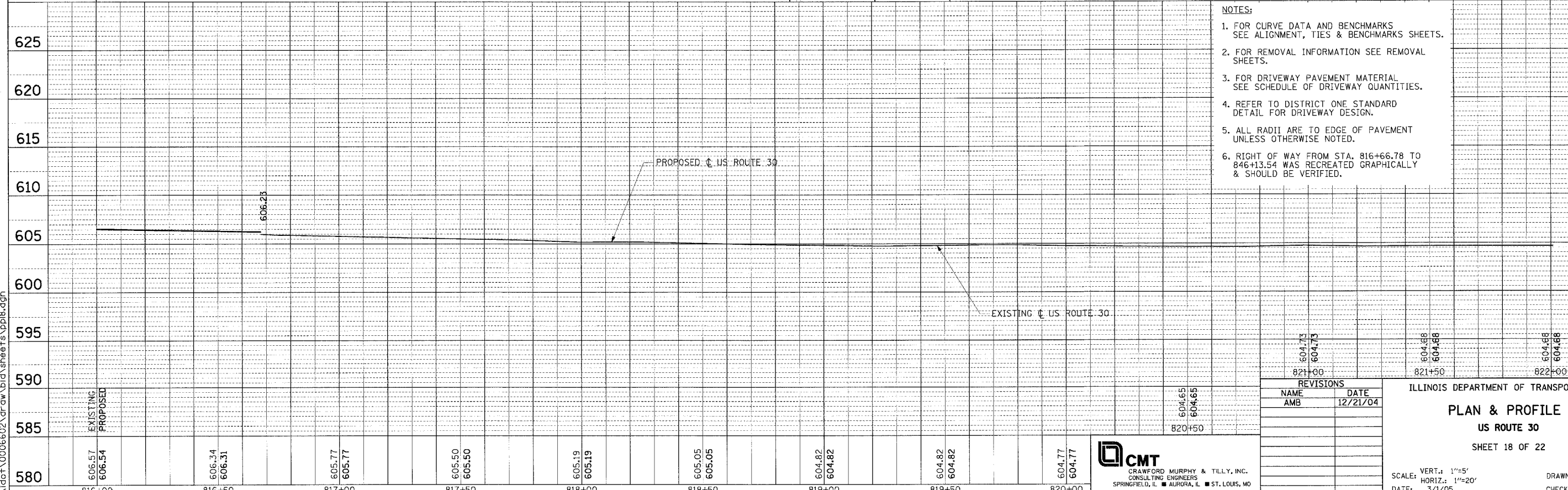


F.A.P. RTE.	SECTION	COUNTY	TOTAL SHEETS	SHEET NO.
575	(B&I4) R-3	WILL	390	91
STA. 816+00 TO STA. 822+00				
FED. ROAD DIST. NO.		ILLINOIS FED. AID PROJECT		
CONTRACT NO. 60961				

PLAN	DATE
NO.	
BY	
CHECKED	
DATE	



PROFILE	DATE
NO.	
BY	
CHECKED	
DATE	

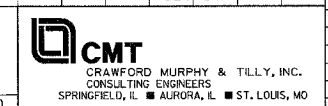


- LEGEND**
- 3/4" POLYMERIZED LEVELING BINDER (MACHINE METHOD), SUPERPAVE, IL-4.75, N50
 - 1/2" POLYMERIZED BITUMINOUS CONCRETE SURFACE COURSE, SUPERPAVE, MIX "F", N90

- NOTES:**
- FOR CURVE DATA AND BENCHMARKS SEE ALIGNMENT, TIES & BENCHMARKS SHEETS.
 - FOR REMOVAL INFORMATION SEE REMOVAL SHEETS.
 - FOR DRIVEWAY PAVEMENT MATERIAL SEE SCHEDULE OF DRIVEWAY QUANTITIES.
 - REFER TO DISTRICT ONE STANDARD DETAIL FOR DRIVEWAY DESIGN.
 - ALL RADII ARE TO EDGE OF PAVEMENT UNLESS OTHERWISE NOTED.
 - RIGHT OF WAY FROM STA. 816+66.78 TO 846+13.54 WAS RECREATED GRAPHICALLY & SHOULD BE VERIFIED.

REVISIONS	
NAME	DATE
AMB	12/21/04

ILLINOIS DEPARTMENT OF TRANSPORTATION
PLAN & PROFILE
US ROUTE 30
 SHEET 18 OF 22



SCALE: VERT.: 1"=5'
 HORIZ.: 1"=20'
 DATE: 3/1/05
 DRAWN BY: SNH
 CHECKED BY: AMB/KDF

I:\dot\0006602\dr\aw\bid\sheet\sppl8.dgn