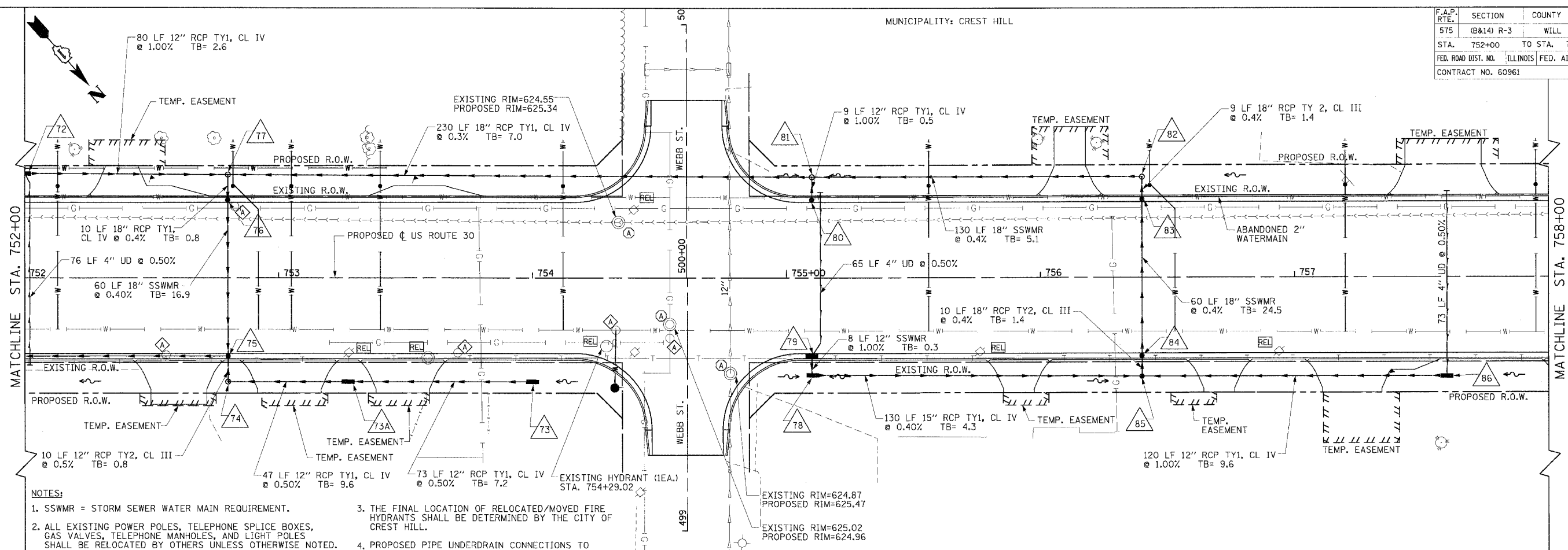


F.A.P. RTE.	SECTION	COUNTY	TOTAL SHEETS	SHEET NO.
575	(B&I) R-3	WILL	390	102
STA.	752+00 TO STA.		758+00	
FED. ROAD DIST. NO.	ILLINOIS		FED. AID PROJECT	
CONTRACT NO. 60961				

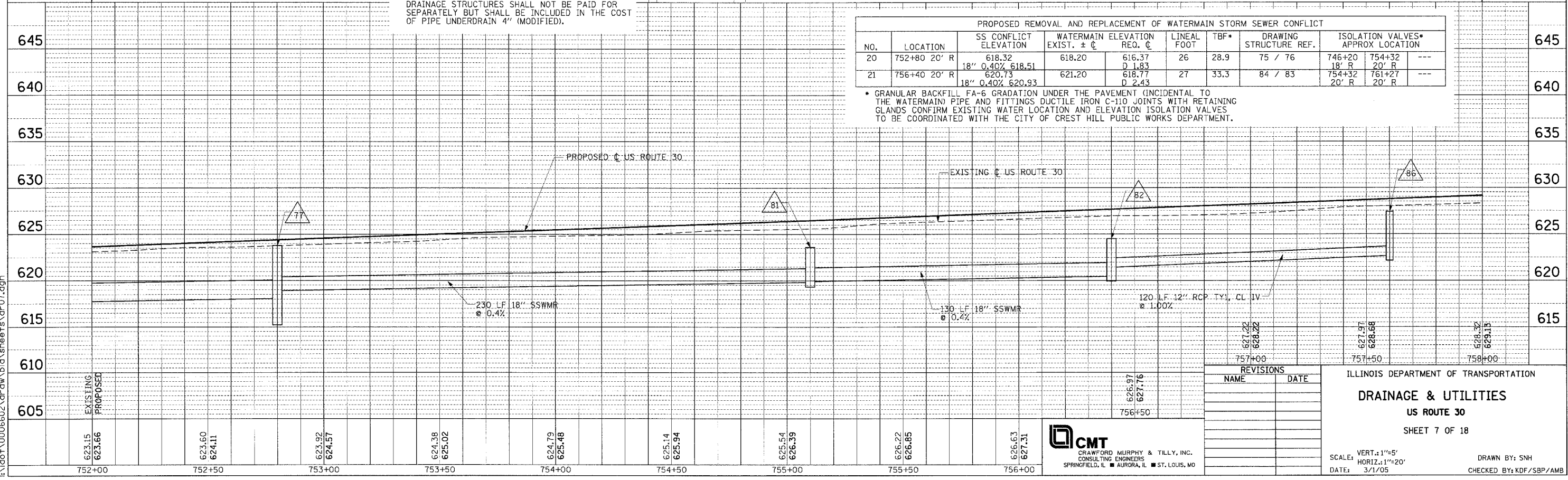
MUNICIPALITY: CREST HILL



- NOTES:**
- SSWMR = STORM SEWER WATER MAIN REQUIREMENT.
 - ALL EXISTING POWER POLES, TELEPHONE SPLICE BOXES, GAS VALVES, TELEPHONE MANHOLES, AND LIGHT POLES SHALL BE RELOCATED BY OTHERS UNLESS OTHERWISE NOTED.
 - THE FINAL LOCATION OF RELOCATED/MOVED FIRE HYDRANTS SHALL BE DETERMINED BY THE CITY OF CREST HILL.
 - PROPOSED PIPE UNDERDRAIN CONNECTIONS TO DRAINAGE STRUCTURES SHALL NOT BE PAID FOR SEPARATELY BUT SHALL BE INCLUDED IN THE COST OF PIPE UNDERDRAIN 4" (MODIFIED).

NO.	LOCATION	SS CONFLICT ELEVATION	WATERMAIN ELEVATION EXIST. ± @	LINEAL FOOT	TBF*	DRAWING STRUCTURE REF.	ISOLATION VALVES* APPROX LOCATION
20	752+80 20' R	618.32 18" 0.40% 618.51	618.20	616.37 D 1.83	26	28.9	75 / 76 746+20 18' R 754+32 20' R
21	756+40 20' R	620.73 18" 0.40% 620.93	621.20	618.77 D 2.43	27	33.3	84 / 83 754+32 20' R 761+27 20' R

* GRANULAR BACKFILL FA-6 GRADATION UNDER THE PAVEMENT (INCIDENTAL TO THE WATERMAIN) PIPE AND FITTINGS DUCTILE IRON C-110 JOINTS WITH RETAINING GLANDS CONFIRM EXISTING WATER LOCATION AND ELEVATION ISOLATION VALVES TO BE COORDINATED WITH THE CITY OF CREST HILL PUBLIC WORKS DEPARTMENT.



NO.	NAME	DATE

ILLINOIS DEPARTMENT OF TRANSPORTATION
DRAINAGE & UTILITIES
 US ROUTE 30
 SHEET 7 OF 18

CMT
 CRAWFORD MURPHY & TILLY, INC.
 CONSULTING ENGINEERS
 SPRINGFIELD, IL ■ AURORA, IL ■ ST. LOUIS, MO

SCALE: VERT.: 1"=5'
 HORIZ.: 1"=20'
 DATE: 3/1/05
 DRAWN BY: SNH
 CHECKED BY: KDF/SBP/AMB

PLAN	DATE	BY

PROFILE	DATE	BY

I:\dot\0006602\draw\dwg\sheet7\dr-07.dgn