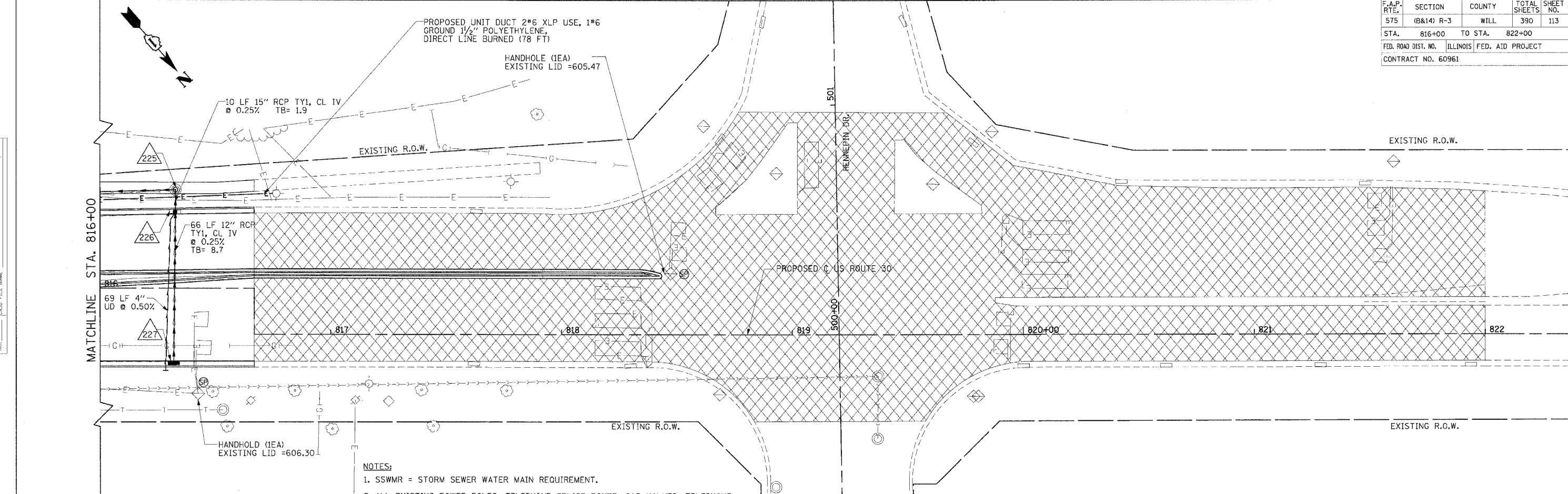


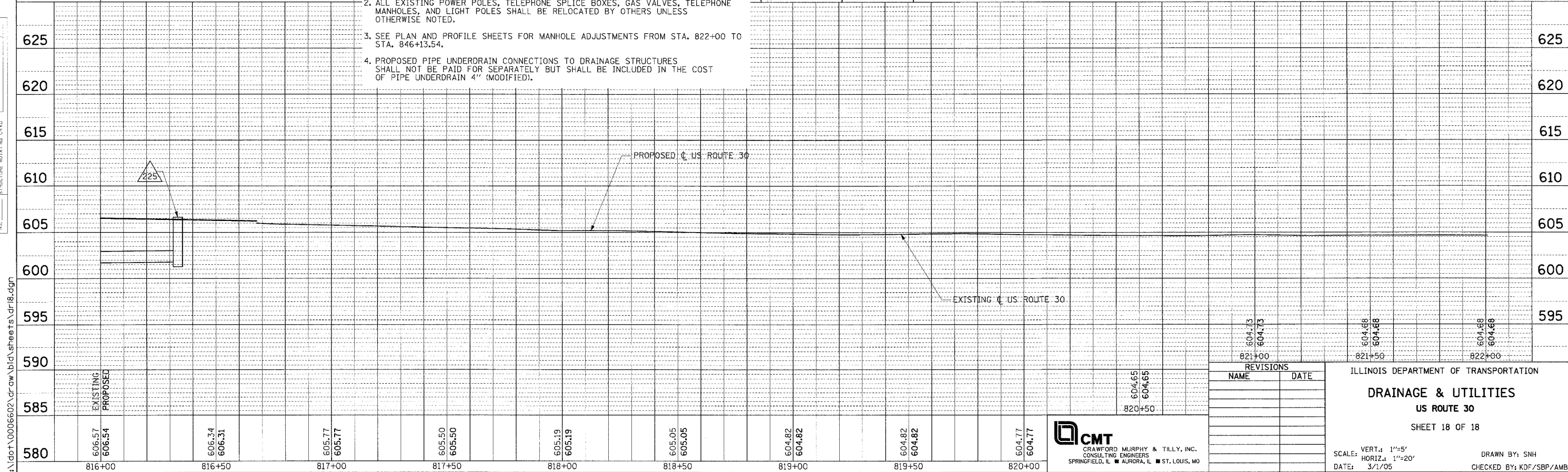
F.A.P. RTE.	SECTION	COUNTY	TOTAL SHEETS	SHEET NO.
575	(B&I4) R-3	WILL	390	113
STA. 816+00		TO STA. 822+00		
FED. ROAD DIST. NO.		ILLINOIS FED. AID PROJECT		
CONTRACT NO. 60961				

PLAN	DESIGNED BY	DATE
NO.	NAME	
	ALIGNED	CHECKED
	FILED	FILED
	FILED	FILED

PROFILE	DESIGNED BY	DATE
NO.	NAME	
	ALIGNED	CHECKED
	FILED	FILED
	FILED	FILED



- NOTES:**
1. SSWMR = STORM SEWER WATER MAIN REQUIREMENT.
 2. ALL EXISTING POWER POLES, TELEPHONE SPLICE BOXES, GAS VALVES, TELEPHONE MANHOLES, AND LIGHT POLES SHALL BE RELOCATED BY OTHERS UNLESS OTHERWISE NOTED.
 3. SEE PLAN AND PROFILE SHEETS FOR MANHOLE ADJUSTMENTS FROM STA. 822+00 TO STA. 846+13.54.
 4. PROPOSED PIPE UNDERDRAIN CONNECTIONS TO DRAINAGE STRUCTURES SHALL NOT BE PAID FOR SEPARATELY BUT SHALL BE INCLUDED IN THE COST OF PIPE UNDERDRAIN 4" (MODIFIED).



I:\dot\0006602\draw\bid\sheet8.dwg

REVISIONS	
NAME	DATE

ILLINOIS DEPARTMENT OF TRANSPORTATION
DRAINAGE & UTILITIES
US ROUTE 30
 SHEET 18 OF 18

SCALE: VERT.: 1"=5'
 HORIZ.: 1"=20'
 DATE: 3/1/05

DRAWN BY: SNH
 CHECKED BY: KDF/SBP/AMB



816+00	816+50	817+00	817+50	818+00	818+50	819+00	819+50	820+00
606.57 606.54	606.34 606.31	605.77 605.77	605.50 605.50	605.19 605.19	605.05 605.05	604.82 604.82	604.82 604.82	604.77 604.77