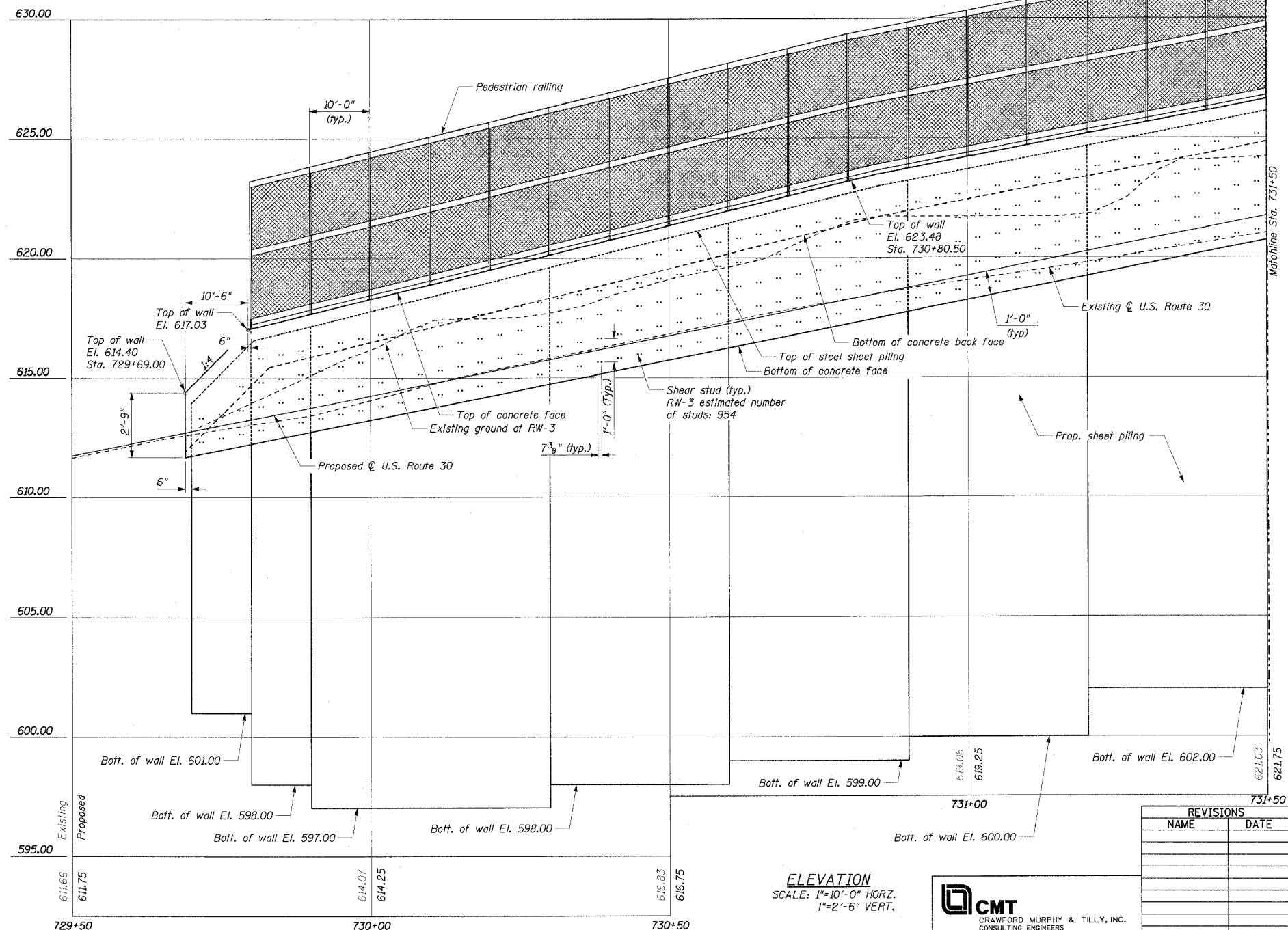
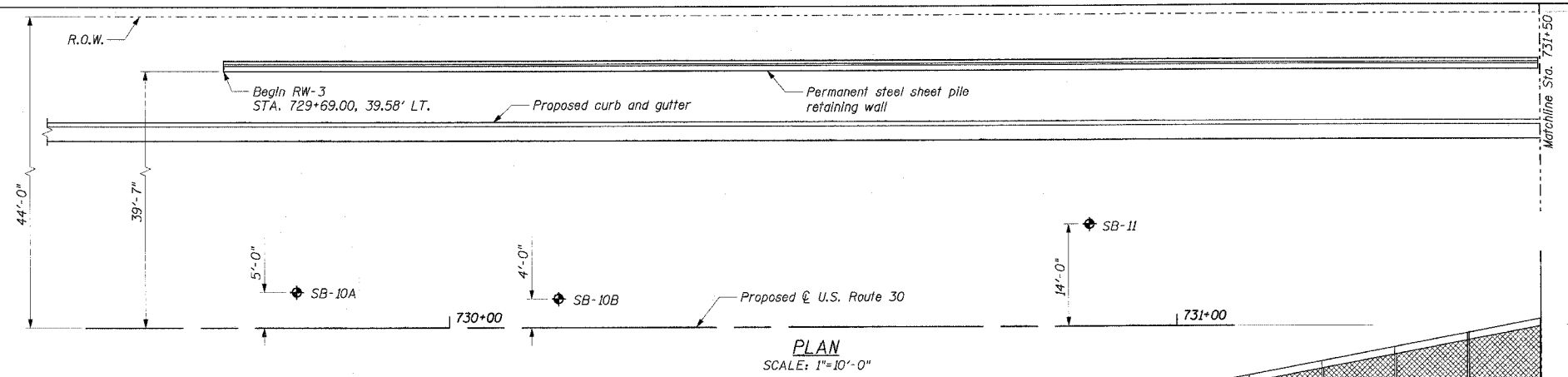
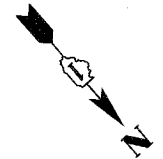


F.A.P. RTE.	SECTION	COUNTY	TOTAL SHEETS	SHEET NO.
575	(B&14) R-3	WILL	390	200
STA.		TO STA.		
FED. ROAD DIST. NO.		ILLINOIS FED. AID PROJECT		
CONTRACT NO. 60961		Sheet 15 of 25		



NOTES:
1. Control joints shall be formed at thin wall sections and spaced at 25'-0". See sheet 18 of 25 for typical detail.

REVISIONS	
NAME	DATE

ILLINOIS DEPARTMENT OF TRANSPORTATION
RW-3 GENERAL PLAN & ELEVATION I

FAP RTE. 575 (U.S.30)
SECTION (B & 14) R-3
WILL COUNTY

SCALE: VERT. AS SHOWN
HORIZ. DATE: 3/1/05
DRAWN BY: GRS
CHECKED BY: ATI

CMT
CRAWFORD MURPHY & TILLY, INC.
CONSULTING ENGINEERS
SPRINGFIELD, IL ■ ALURORA, IL ■ ST. LOUIS, MO

I:\dct000602\draw\other\retaining walls\profile_rw-3a.dgn