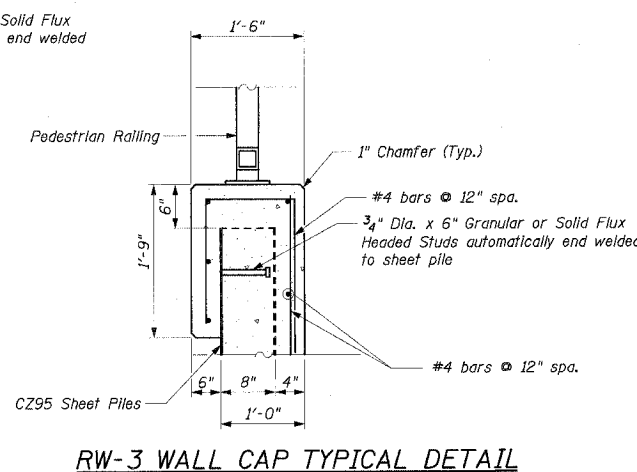
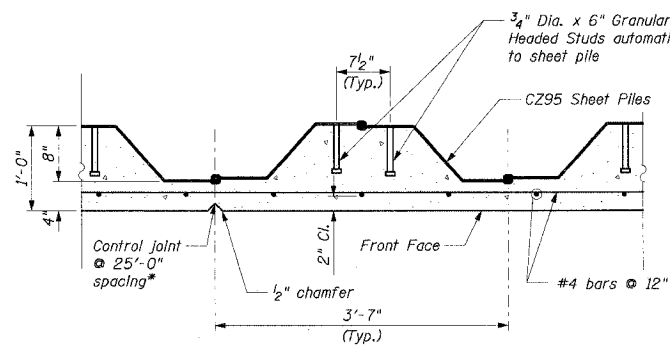


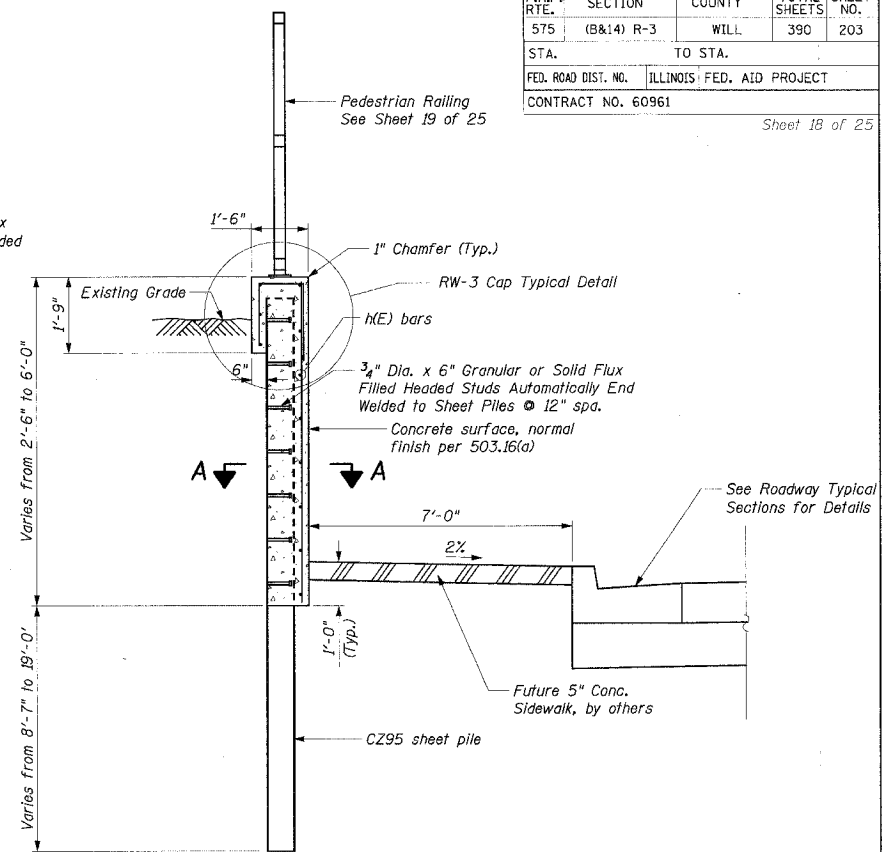
RW-2

NOTE:
1. Storm Sewer must be installed prior to excavation

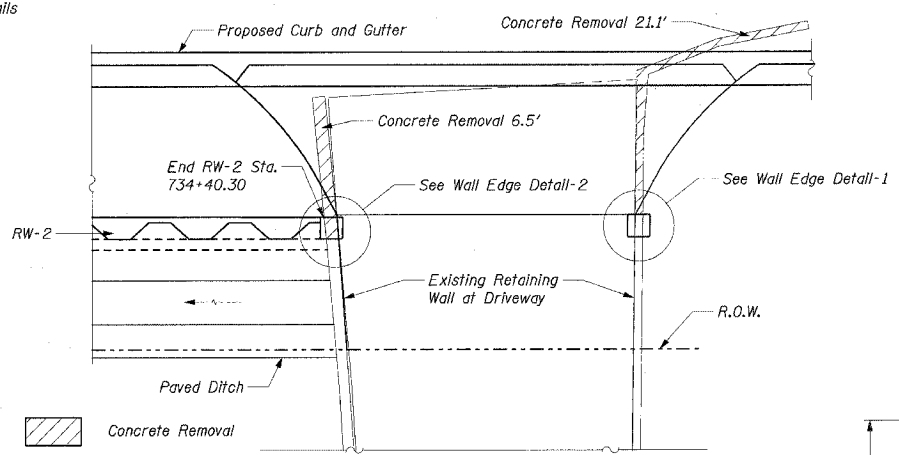
SHEET PILE WALL TYPICAL SECTION A-A
* Control joints shall be formed at thin wall sections as shown on this detail.



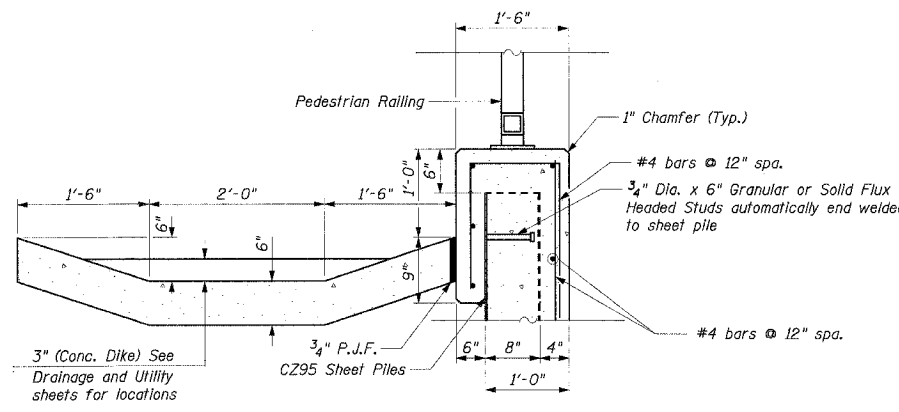
RW-3 WALL CAP TYPICAL DETAIL



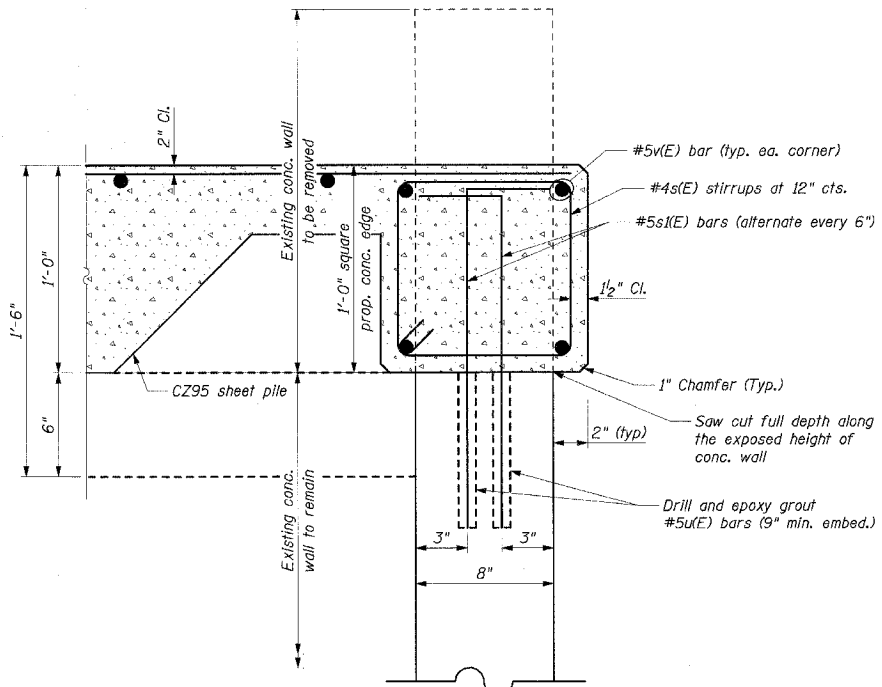
RW-3



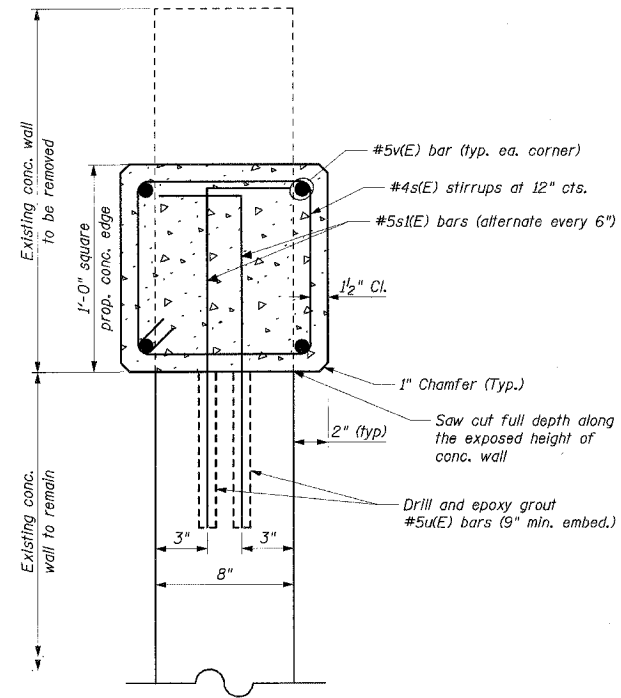
RW-2 END OF WALL PLAN
Station 734+40.30



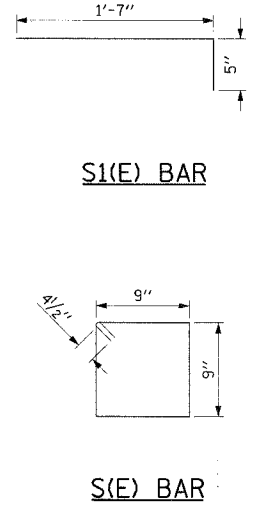
RW-2 WALL CAP & PAVED DITCH TYPICAL DETAIL



WALL EDGE DETAIL-2 - SECTION



WALL EDGE DETAIL-1 - SECTION



NOTE:
Proposed wall edge to be extended 18" below finish grade.

REVISIONS	
NAME	DATE

ILLINOIS DEPARTMENT OF TRANSPORTATION
RW-2 & RW-3 TYPICAL DETAILS
FAP RTE. 575 (U.S.30)
SECTION (B & 14) R-3
WILL COUNTY
SCALE: VERT. NONE
HORIZ. 1" = 10'
DATE: 3/1/05
DRAWN BY: GRS
CHECKED BY: ATI

CMT
CRAWFORD MURPHY & TILLY, INC.
CONSULTING ENGINEERS
SPRINGFIELD, IL ■ AURORA, IL ■ ST. LOUIS, MO

SHEET PILE SPECIFICATIONS:
fy = 50,000 psi
Sx = 10.5 in³/ft (Effective section modulus)

I:\dot\0009602\draw\weather\retaining walls\rw-2_&_rw-3_typ_details.dgn