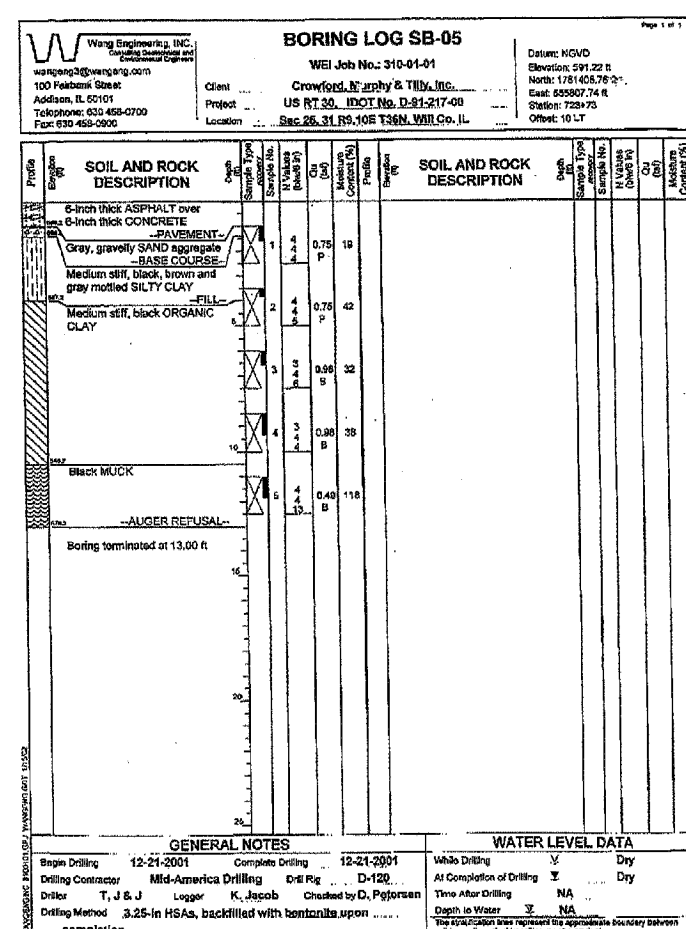
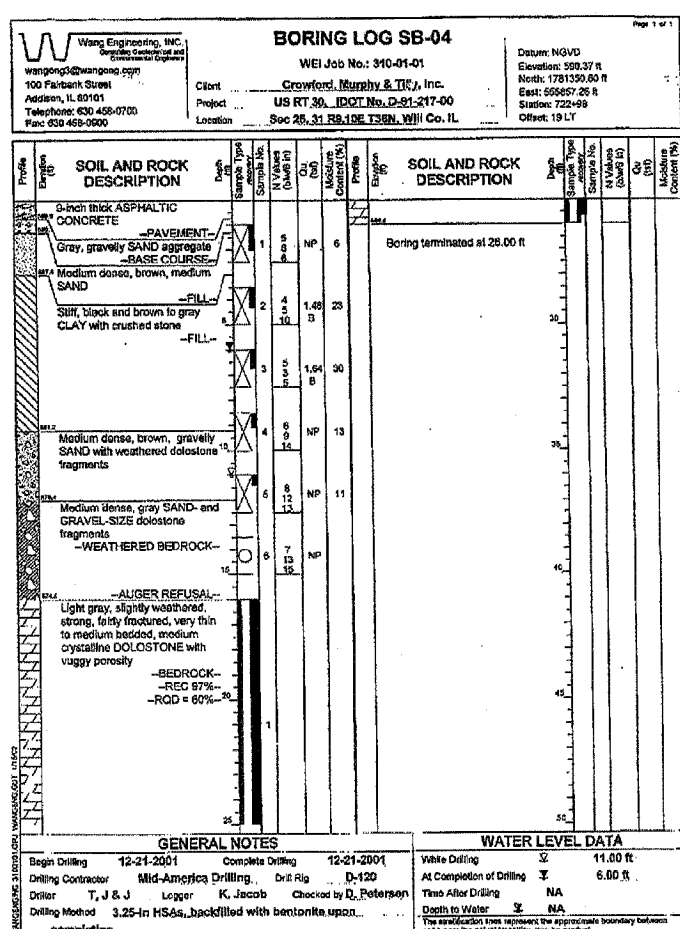
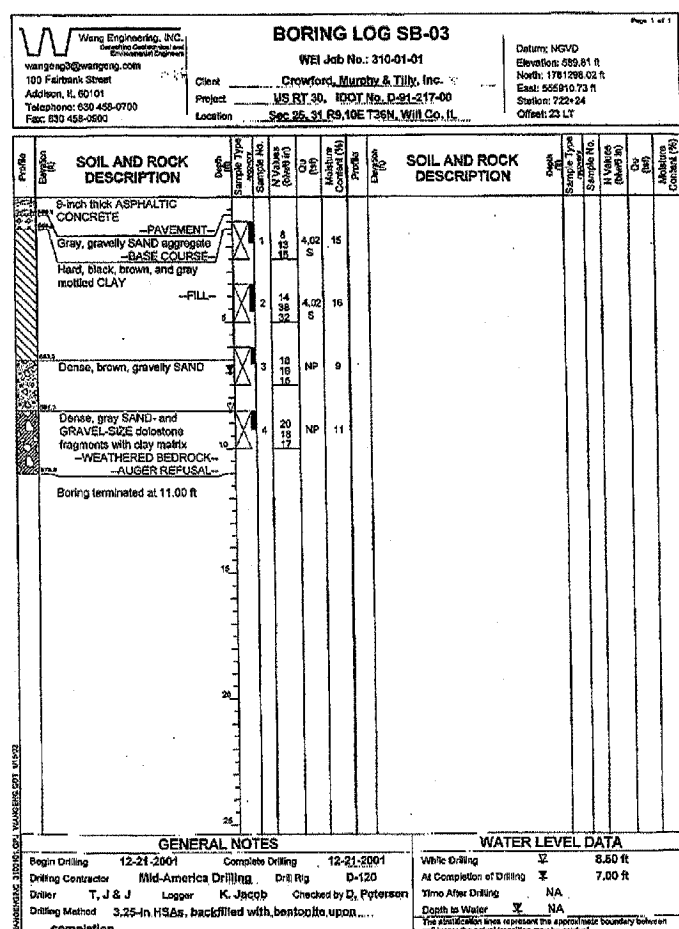
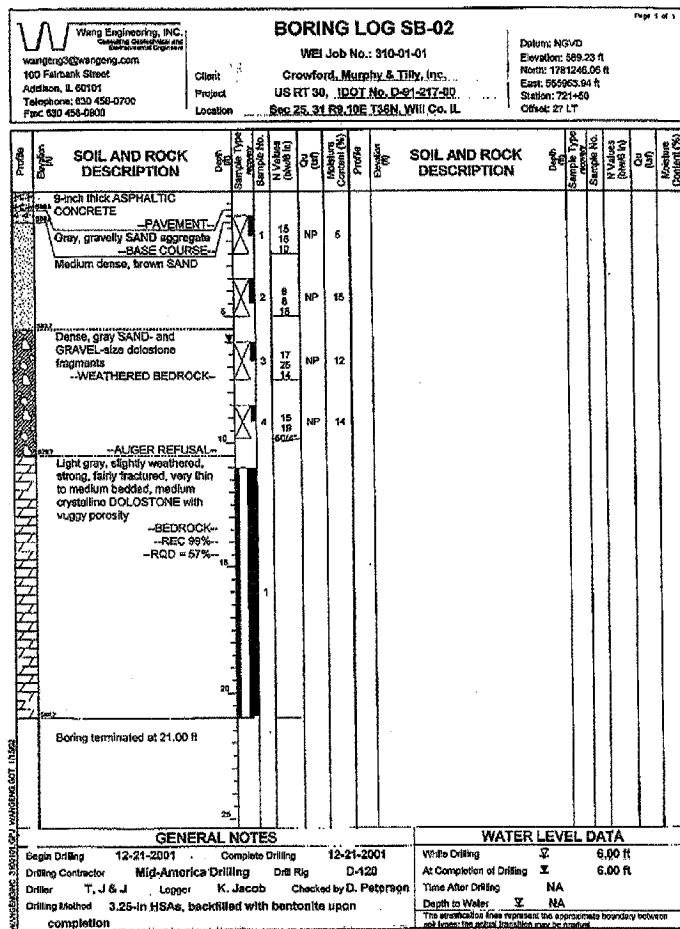
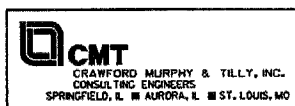


F.A.P. RTE.	SECTION	COUNTY	TOTAL SHEETS	SHEET NO.
575	(B&14) R-3	WILL	390	205
STA. TO STA.				
FED. ROAD DIST. NO. ILLINOIS FED. AID PROJECT				
CONTRACT NO. 60961				

Sheet 20 of 25



REVISIONS		ILLINOIS DEPARTMENT OF TRANSPORTATION
NAME	DATE	
		SOIL BORING LOGS I FAP RTE. 575 (I.S.30) SECTION (B & 14) R-3 WILL COUNTY SCALE: VERT. NONE HORIZ. DATE: 3/1/05 DRAWN BY: GRS CHECKED BY: ATI



I:\DOT\0006602\Draw\Other\Retaining walls\soil_boring_logs.dgn