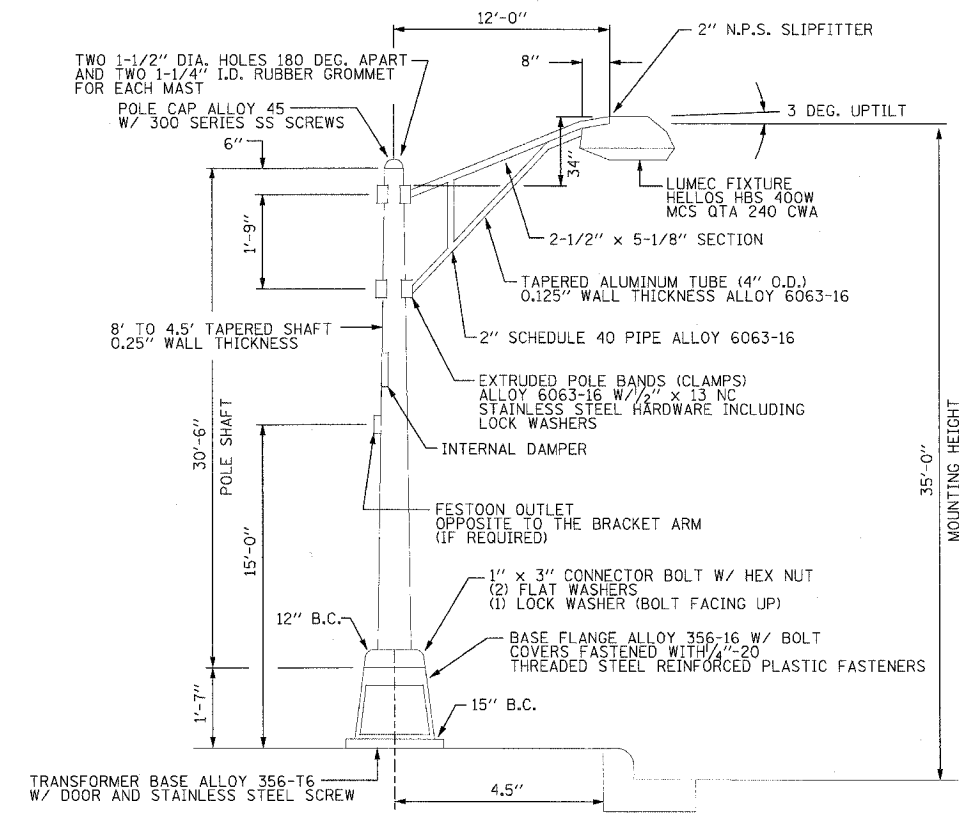
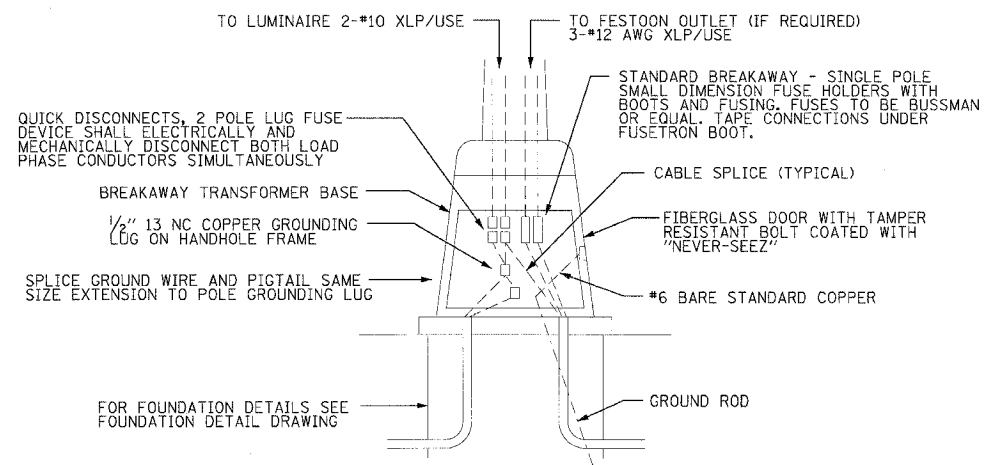


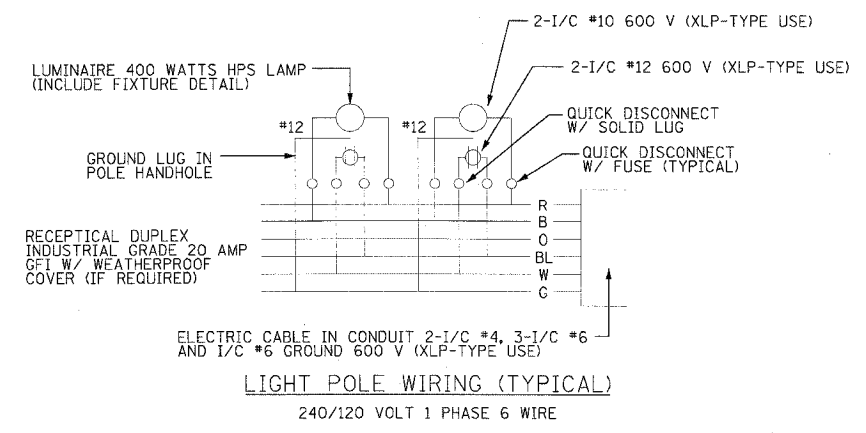
F.A.P. RTE.	SECTION	COUNTY	TOTAL SHEETS	SHEET NO.
575	(B&14) R-3	WILL	390	239
STA.		TO STA.		
FED. ROAD DIST. NO.		ILLINOIS FED. AID PROJECT		
CONTRACT NO. 60961				



STREET LIGHT DETAIL



POLE BASE DETAIL



LIGHT POLE WIRING (TYPICAL)

GENERAL NOTES

THE CONTRACTOR SHALL SUBMIT DETAILED SHOP DRAWINGS OR CATALOG CUTS FOR ALL EQUIPMENT AND MATERIALS TO THE CITY OF JOLIET FOR APPROVAL PRIOR TO FABRICATION OR INSTALLATION. FAILURE TO SUBMIT AND APPROVE MATERIAL MAY RESULT IN UNACCEPTED WORK AND/OR REINSTALLATION.

THE STREETLIGHT SYSTEM SHALL BE INSTALLED IN ACCORDANCE TO THE MOST CURRENT ADDITION OF THE "DISTRICT ONE RECURRING SPECIAL PROVISIONS FOR ROADWAY LIGHTING", THE "NATIONAL ELECTRIC CODE" AND "AASHTO".

ALL CONDUCTORS SHALL BE COPPER WITH A XLP/USE INSULATION RATING.

THE CONTRACTOR SHALL PROVIDE THE SERVICE CONNECTION AND METER ASSEMBLY FOR COMMONWEALTH EDISON. ALL COORDINATION SHALL BE THE RESPONSIBILITY OF THE CONTRACTOR.

THE ELECTRICAL METER SHALL BE INSTALLED ON THE SIDE OF THE CONTROLLER OPPOSITE THAT OF ONCOMING TRAFFIC.

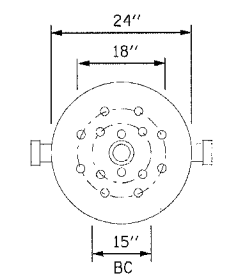
TWO RACEWAYS OR CONDUITS SHALL BE PROVIDED FOR EACH STREETLIGHT FOUNDATION. A JUNCTION OF THREE RACEWAYS OR CONDUITS SHALL UTILIZE A HANDHOLE.

PRIOR TO BEGINNING CONSTRUCTION, THE CONTRACTOR SHALL CONTACT THE CITY OF JOLIET ELECTRICAL DIVISION AT 815-724-3661 TO ARRANGE AN ONSITE PROJECT MEETING. CONFIRMATION OF ALL APPROVED MATERIALS AND ADDRESSING ANY FINAL QUESTIONS SHALL TAKE PLACE AT THIS TIME.

FOUNDATION INSPECTIONS WILL BE REQUIRED PRIOR TO POURING.

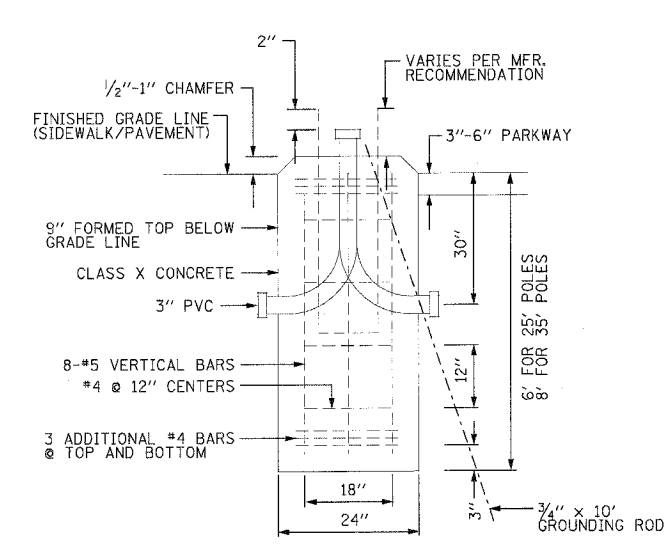
ALL CONDUIT BETWEEN STREETLIGHT CONTROLLER AND SERVICE CONNECTION SHALL BE RIGID GALVANIZE STEEL CONDUIT.

WATERPROOF INLINE FUSES (5 AMP) ARE TO BE INSTALLED AT THE STREETLIGHT TRANSFORMER BASE.



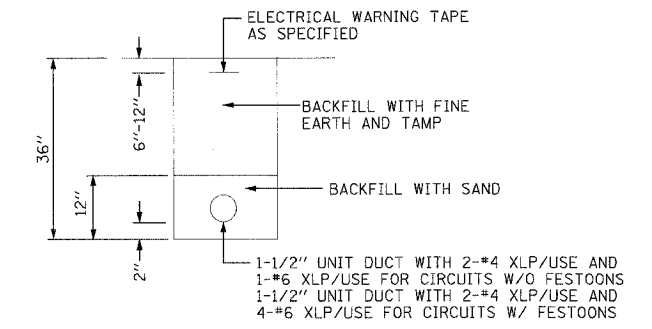
ANCHOR BOLTS

1" DIA. GALVANIZED STEEL BOLTS
1 HEX NUT
1 LOCK WASHER AND 2 FLAT WASHERS
(4 OF EACH REQUIRED)

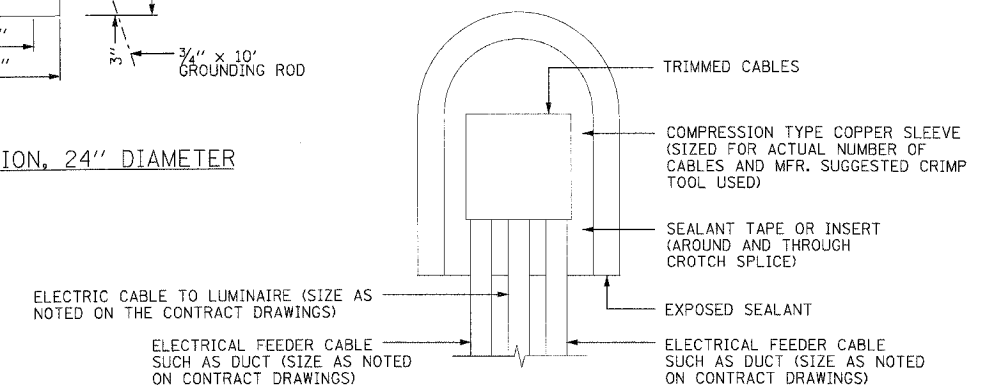


LIGHT POLE FOUNDATION, 24" DIAMETER

TYPE OF SOIL	DESIGN DEPTH OF FOUNDATION	REINFORCEMENT IN VERTICAL BARS	FOUNDATION SPIRAL
SOFT CLAY	13'-0"	8-#6 x 12'-6"	#3 x 122'
MEDIUM CLAY	9'-6"	8-#6 x 9'-0"	#3 x 90'
STIFF CLAY	7'-0"	8-#6 x 6'-6"	#3 x 66'
LOOSE SAND	9'-0"	8-#6 x 8'-6"	#3 x 85'
MEDIUM SAND	8'-3"	8-#6 x 6'-0"	#3 x 70'
DENSE SAND	7'-9"	8-#6 x 7'-6"	#3 x 73'
ROCK OR SOLIDIFIED SLAG	5'-0"	NONE	NONE



DETAIL CONDUIT AND CONDUCTORS



SPlicing ELECTRIC CABLE
NUMBER OF CABLES IN SPLICE MAY VARY.

NAME	DATE

ILLINOIS DEPARTMENT OF TRANSPORTATION
MISC. CONSTRUCTION DETAILS
STREET LIGHTING STANDARDS - JOLIET
US ROUTE 30
SHEET 3 OF 4

SCALE: VERT. NONE
HORIZ. NONE
DATE: 3/1/05

DRAWN BY: SNH
CHECKED BY: KDF/AMB



I:\doc\00066602\raw\ibid\sheet\details-3.dgn