

MUNICIPALITY: CREST HILL

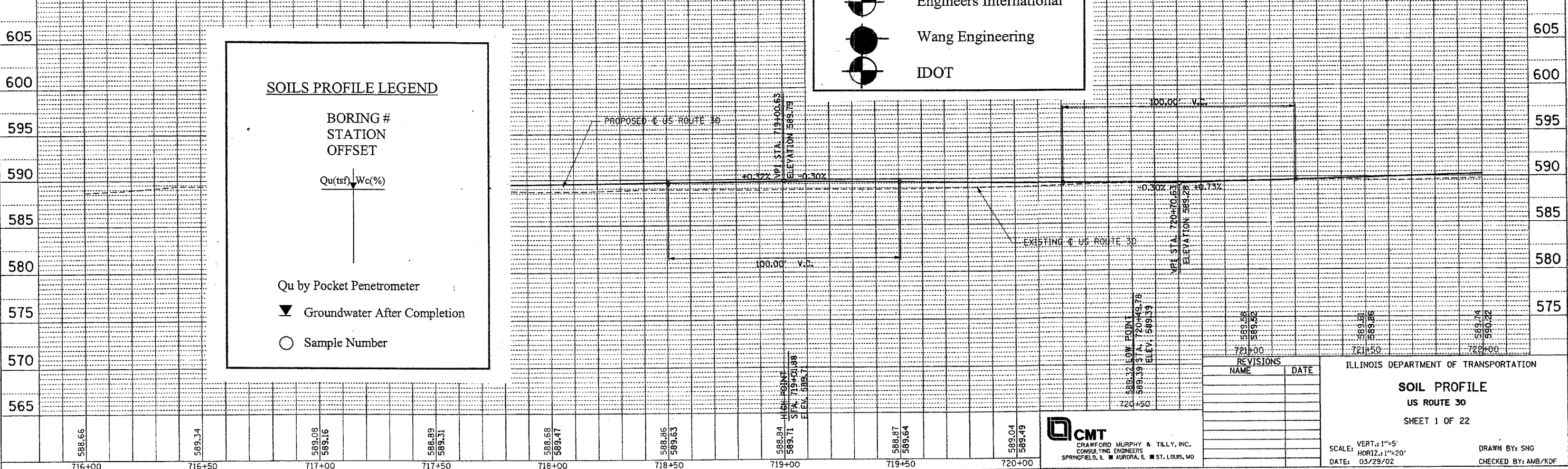
WETLAND LIMIT

**BEGIN RECONSTRUCTION STA. 716 + 77.10**

PROP. SOLDIER PILE WALL RW-1 STA. 721+52.18 TO STA. 726+19 SEE SHEET NO. --

DATE: \_\_\_\_\_  
 BY: \_\_\_\_\_  
 CHECKED: \_\_\_\_\_  
 DATE: \_\_\_\_\_

- NOTES:**
- FOR CURVE DATA AND BENCHMARKS SEE ALIGNMENT, TIES & BENCHMARK SHEETS.
  - FOR REMOVAL INFORMATION SEE REMOVAL SHEETS.
  - FOR DRAINAGE AND UTILITY INFORMATION SEE DRAINAGE/UTILITY SHEETS.
  - FOR DRIVEWAY PAVEMENT MATERIAL AND THICKNESS SEE SCHEDULE OF DRIVEWAY QUANTITIES.
  - REFER TO DISTRICT ONE STANDARD DETAIL FOR DRIVEWAY DESIGN.
  - ALL RADII ARE TO EDGE OF PAVEMENT UNLESS OTHERWISE NOTED.
  - FOR MAILBOX TURNOUTS SEE CONSTRUCTION DETAIL SHEET.



**LEGEND**

- Engineers International
- Wang Engineering
- IDOT

**SOILS PROFILE LEGEND**

BORING #  
STATION  
OFFSET

Qu (tsf) | Wc (%)

Qu by Pocket Penetrometer

▼ Groundwater After Completion

○ Sample Number

DATE: \_\_\_\_\_  
 BY: \_\_\_\_\_  
 CHECKED: \_\_\_\_\_  
 DATE: \_\_\_\_\_

H:\dot\0006602\draw\bid\sheet\sp01.dgn

REVISIONS	
NAME	DATE

ILLINOIS DEPARTMENT OF TRANSPORTATION

**SOIL PROFILE**  
US ROUTE 30  
SHEET 1 OF 22

SCALE: VERT. 1"=5'  
HORIZ. 1"=20'  
DATE: 03/29/02

DRAWN BY: SNG  
CHECKED BY: AMB/KDF

**CMT**  
CRAWFORD MURPHY & TILLY, INC.  
CONSULTING ENGINEERS  
SPRINGFIELD, IL ■ AURORA, IL ■ ST. LOUIS, MO

588.66	589.34	589.08 589.16	588.89 589.31	588.68 589.47	588.86 589.63	588.84 589.71	588.87 589.64	589.04 589.49
716+00	716+50	717+00	717+50	718+00	718+50	719+00	719+50	720+00