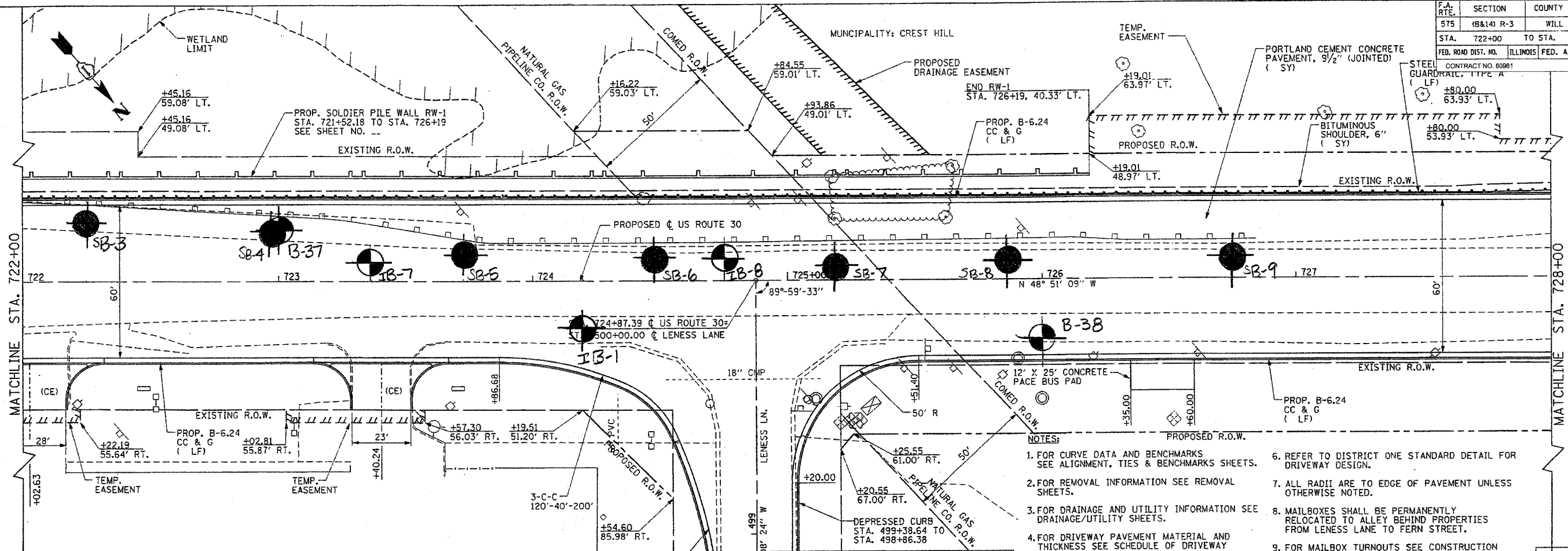
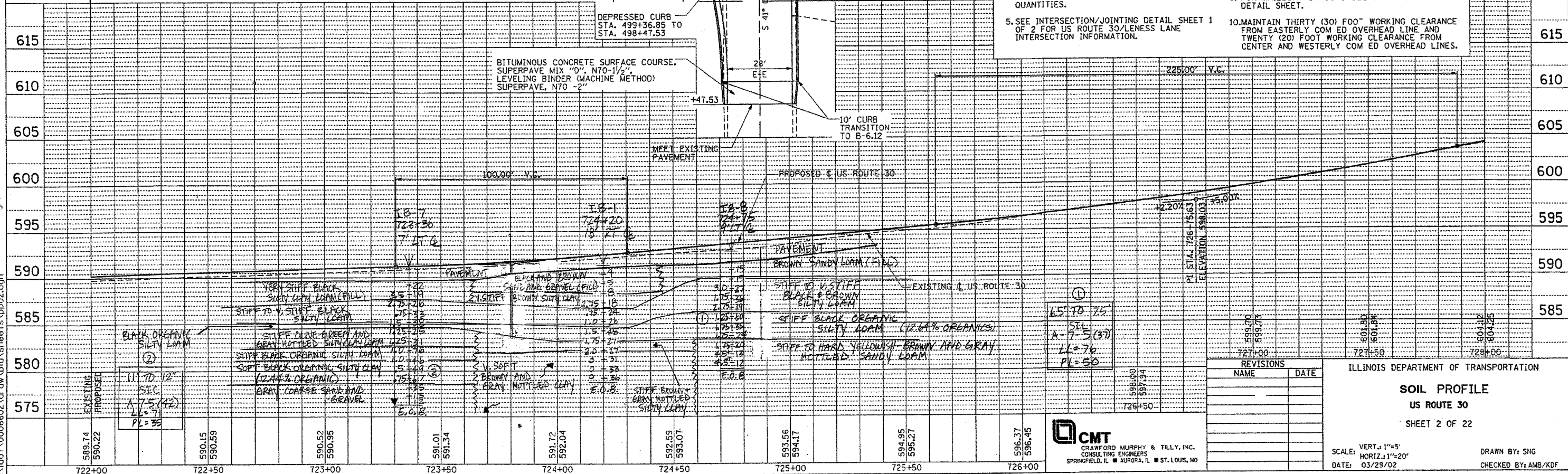


F.A. RTE.	SECTION	COUNTY	TOTAL SHEETS	SHEET NO.
575	(B&I) R-3	WILL	300	366
STA. 722+00		TO STA. 728+00		
FED. ROAD DIST. NO.		ILLINOIS	FED. AID PROJECT	

CONTRACT NO. 80981  
STEEL GUARDRAIL, TYPE "A" (LF) +80.00 63.93' LT.  
PORTLAND CEMENT CONCRETE PAVEMENT, 9 1/2" (JOINTED) (SY)  
BITUMINOUS SHOULDER, 6" (SY)  
+80.00 53.93' LT.



- NOTES:
- FOR CURVE DATA AND BENCHMARKS SEE ALIGNMENT, TIES & BENCHMARKS SHEETS.
  - FOR REMOVAL INFORMATION SEE REMOVAL SHEETS.
  - FOR DRAINAGE AND UTILITY INFORMATION SEE DRAINAGE/UTILITY SHEETS.
  - FOR DRIVEWAY PAVEMENT MATERIAL AND THICKNESS SEE SCHEDULE OF DRIVEWAY QUANTITIES.
  - SEE INTERSECTION/JOINTING DETAIL SHEET 1 OF 2 FOR US ROUTE 30/LENESS LANE INTERSECTION INFORMATION.
  - REFER TO DISTRICT ONE STANDARD DETAIL FOR DRIVEWAY DESIGN.
  - ALL RADII ARE TO EDGE OF PAVEMENT UNLESS OTHERWISE NOTED.
  - MAILBOXES SHALL BE PERMANENTLY RELOCATED TO ALLEY BEHIND PROPERTIES FROM LENESS LANE TO FERN STREET.
  - FOR MAILBOX TURNOUTS SEE CONSTRUCTION DETAIL SHEET.
  - MAINTAIN THIRTY (30) FOOT WORKING CLEARANCE FROM EASTERLY COM ED OVERHEAD LINE AND TWENTY (20) FOOT WORKING CLEARANCE FROM CENTER AND WESTERLY COM ED OVERHEAD LINES.



REVISIONS	
NAME	DATE

ILLINOIS DEPARTMENT OF TRANSPORTATION  
**SOIL PROFILE**  
US ROUTE 30  
SHEET 2 OF 22

SCALE: VERT. 1"=5'  
HORIZ. 1"=20'  
DATE: 03/29/02

DRAWN BY: SNG  
CHECKED BY: AMB/KDF

**CMT**  
CRAWFORD MURPHY & TILLY, INC.  
CONSULTING ENGINEERS  
SPRINGFIELD, IL ■ AURORA, IL ■ ST. LOUIS, MO

I:\dot\0006602\draw\bid\sheet\app02.dgn  
 NO. 1  
 DATE: 03/29/02  
 DRAWN BY: SNG  
 CHECKED BY: AMB/KDF