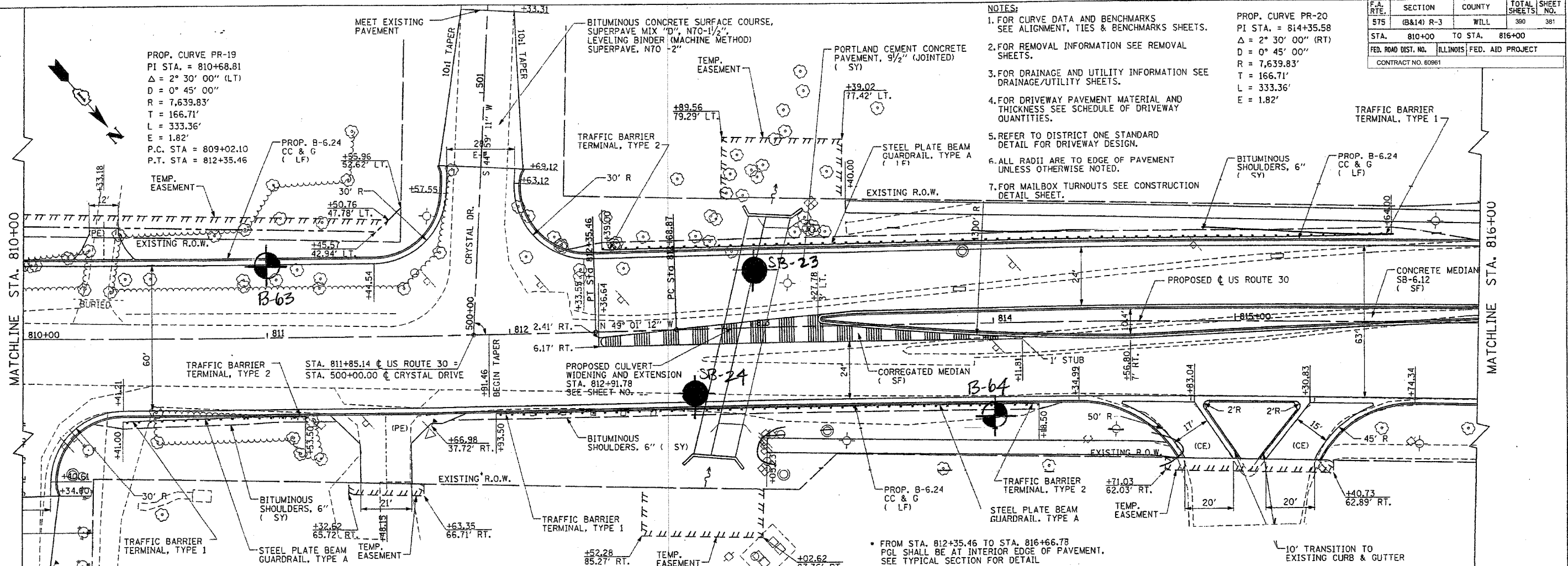


NOTE: BOOK NO. 0006602.dwg/bid/sheets/vp17.dgn
 DATE: 03/29/02
 DRAWN BY: SNG
 CHECKED BY: AMB/KDF

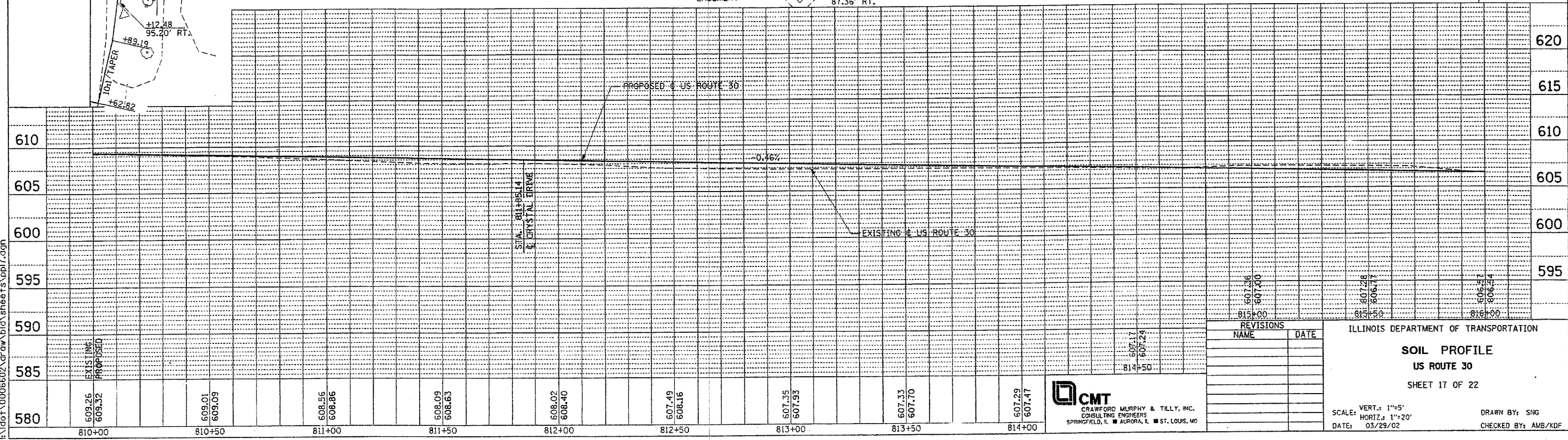
F.A. RTE.	SECTION	COUNTY	TOTAL SHEET NO.
575	(B&I) R-3	WILL.	380 381
STA.	810+00	TO STA.	816+00
FED. ROAD DIST. NO.		ILLINOIS	FED. AID PROJECT
CONTRACT NO. 80961			

PROP. CURVE PR-20
 PI STA. = 814+35.58
 $\Delta = 2^\circ 30' 00''$ (RT)
 $D = 0^\circ 45' 00''$
 $R = 7,639.83'$
 $T = 166.71'$
 $L = 333.36'$
 $E = 1.82'$

- NOTES:
- FOR CURVE DATA AND BENCHMARKS SEE ALIGNMENT, TIES & BENCHMARKS SHEETS.
 - FOR REMOVAL INFORMATION SEE REMOVAL SHEETS.
 - FOR DRAINAGE AND UTILITY INFORMATION SEE DRAINAGE/UTILITY SHEETS.
 - FOR DRIVEWAY PAVEMENT MATERIAL AND THICKNESS SEE SCHEDULE OF DRIVEWAY QUANTITIES.
 - REFER TO DISTRICT ONE STANDARD DETAIL FOR DRIVEWAY DESIGN.
 - ALL RADII ARE TO EDGE OF PAVEMENT UNLESS OTHERWISE NOTED.
 - FOR MAILBOX TURNOUTS SEE CONSTRUCTION DETAIL SHEET.



* FROM STA. 812+35.46 TO STA. 816+66.78
 PGL SHALL BE AT INTERIOR EDGE OF PAVEMENT.
 SEE TYPICAL SECTION FOR DETAIL



REVISIONS	
NAME	DATE

ILLINOIS DEPARTMENT OF TRANSPORTATION
SOIL PROFILE
US ROUTE 30
 SHEET 17 OF 22

SCALE: VERT.: 1"=5'
 HORIZ.: 1"=20'
 DATE: 03/29/02
 DRAWN BY: SNG
 CHECKED BY: AMB/KDF

CMT
 CRAWFORD MURPHY & TILLY, INC.
 CONSULTING ENGINEERS
 SPRINGFIELD, IL ■ AURORA, IL ■ ST. LOUIS, MO