

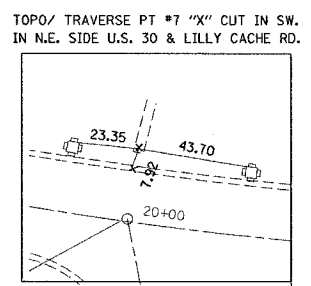
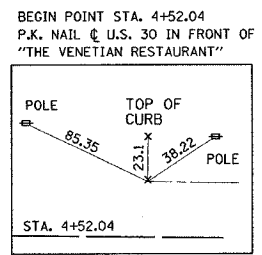
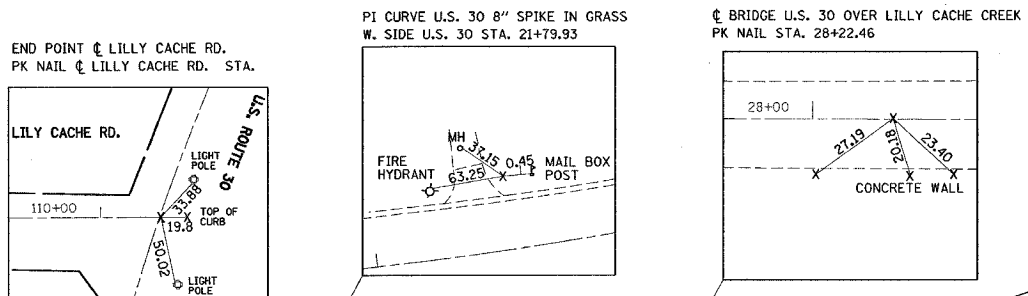
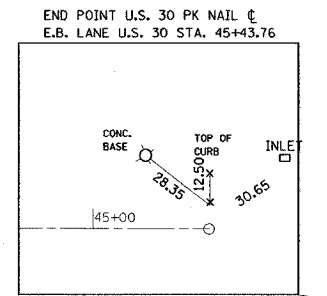
F.A.P. RTE.	SECTION	COUNTY	TOTAL SHEETS	SHEET NO.
575	*	WILL	143	14
STA.		TO STA.		
FED. ROAD DIST. NO. 1		ILLINOIS		FED. AID PROJECT

* 14-B-R-1 & 15N-3 CONTRACT NO. 62098

CURVE NO.	ALIGNMENT POINT	N	E
E 30	PC	1792708.7620	1025954.2121
	PI	1792522.4095	1026129.2400
	PT	1792408.3380	1026358.0406

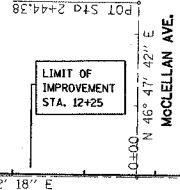
BENCHMARKS
 BM #1 EL. 597.07 □ CUT ON BRIDGE
 CP #1 EL. 601.08
 TOPO #7 EL. 601.26
 TOPO #8 EL. 600.86
 BM #2 EL. 606.29 HYD. LORV. COLLECT
 BM #3 EL. 599.97 □ CUT LILY
 BM #4 EL. 599.18 HYD. CREST CREEK
 BM #5 EL. 603.09 □ CUT L.P. SPANGLER

STATION EQUATION	N	E
McCLELLAN AVE/ STA. 13+73.82	1793109.9873	1025577.3691
LILY CACHE C STA. 110+45.74 U.S. 30 C STA. 19+97.09	1792657.6943	1026006.0901
SPANGLER RD/ 38+38.80	1791779.8540	1027618.6330



POT STA. 4+52.04
 POT STA. 13+73.82

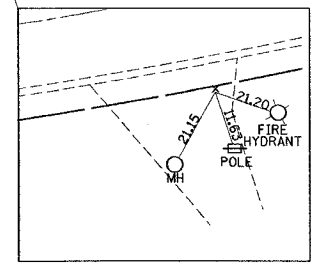
U.S. ROUTE 30



STA. 19+99.5 PROP. @ U.S. 30=
 STA. 110+47.38 PROP. @ LILY CACHE RD.

STA. 19+99.5 PROP. @ U.S. 30=
 STA. 110+47.38 PROP. @ LILY CACHE RD.

U.S. ROUTE 30



POT STA. 19+97.09
 POT STA. 110+45.74

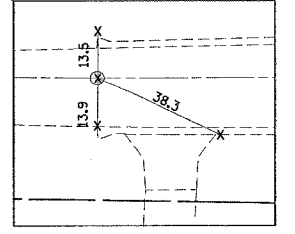
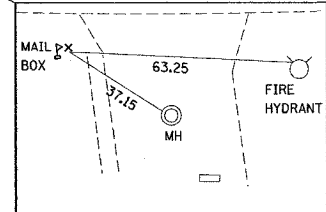
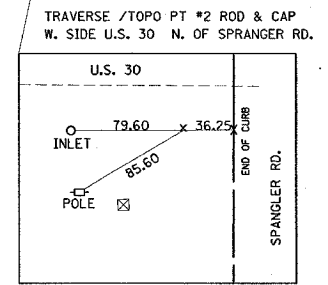
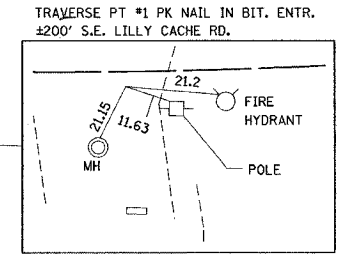
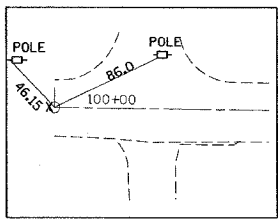
U.S. 30
 S 43° 12' 44" E 1,599.40'
 S 43° 12' 18" E 1,472.23'
 N 46° 47' 42" E 404.00'
 N 24° 47' 47" E 1,509.19'
 N 28° 30' 39" E 1,412.09'
 N 28° 30' 39" E 1,412.09'
 N 28° 30' 39" E 1,412.09'

POT STA. 107+43.34
 POT STA. 105+00.00
 POT STA. 100+00.00

EXIST. CURVE E30
 PI STA. = 21+79.93
 $\Delta = 20^\circ 17' 45''$ (LT)
 $D = 4^\circ 00' 41''$
 $R = 1,428.35'$
 $T = 255.66'$
 $L = 505.96'$
 $E = 22.70'$
 $\theta =$
 T.R. =
 S.E. RUN =
 P.C. STA. = 19+24.27
 P.T. STA. = 24+30.23

PROP. CURVE P_US30-1
 PI STA. = 21+85.01
 $\Delta = 20^\circ 22' 28''$ (LT)
 $D = 3^\circ 47' 47''$
 $R = 1,509.19'$
 $T = 271.20'$
 $L = 536.67'$
 $E = 24.17'$
 $\theta =$
 T.R. =
 S.E. RUN =
 P.C. STA. = 19+13.81
 P.T. STA. = 24+50.48

BEGIN POINT @ LILY CACHE RD.
 PK NAIL @ LILY CACHE RD. STA. 100+00



REVISIONS	
NAME	DATE

ILLINOIS DEPARTMENT OF TRANSPORTATION
**U.S. RTE. 30 AT LILY CACHE RD.
 ALIGNMENT BENCHMARK AND TIES**

SCALE: VERT. NONE
 HORIZ.
 DATE 5/24/2005
 DRAWN BY
 CHECKED BY