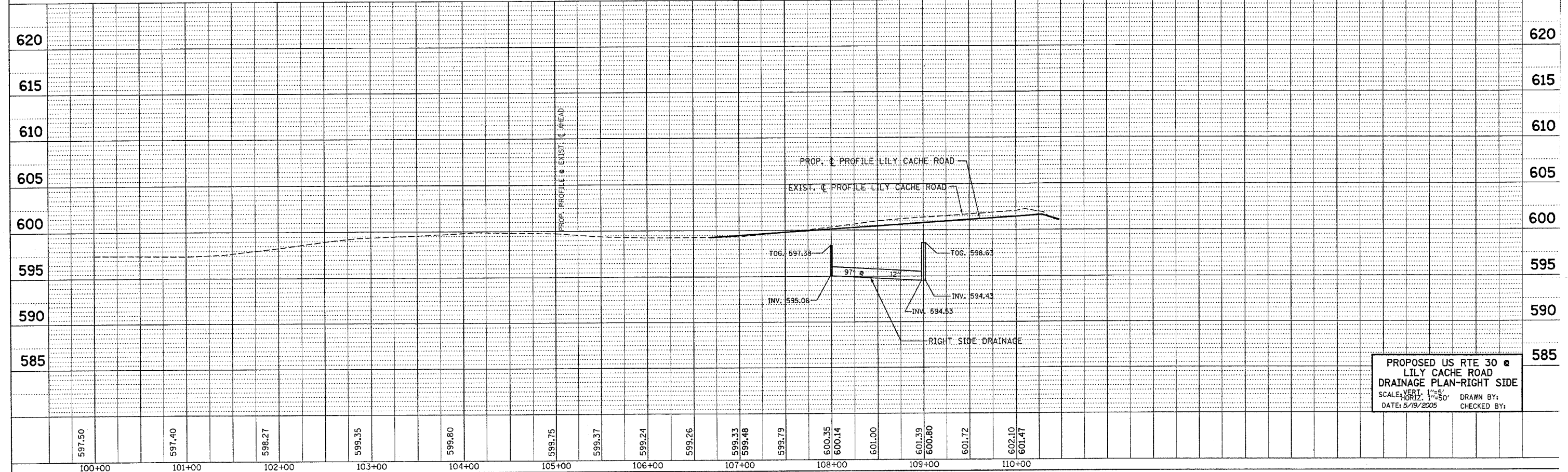
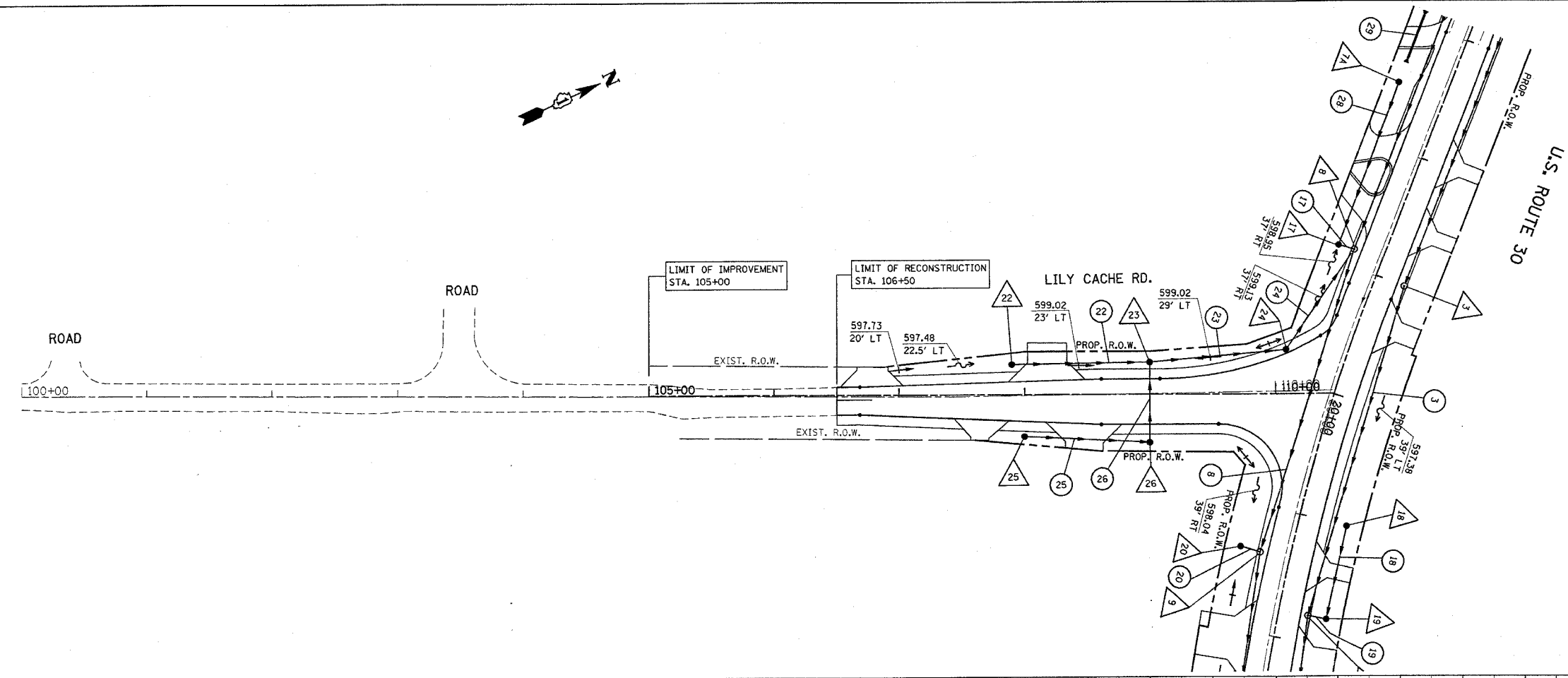


*REF-d_pln03

*REF-d_prof03

F.A.P. RTE.	SECTION	COUNTY	TOTAL SHEETS	SHEET NO.
575	14-B-R-1&15N-3	WILL	143	42
STA. 100+00 TO STA. 110+00		FED. AID PROJECT		
FED. ROAD DIST. NO. 1 ILLINOIS		CONTRACT NO. 62098		



PROPOSED US RTE 30
 LILY CACHE ROAD
 DRAINAGE PLAN-RIGHT SIDE
 SCALE: VERT. 1"=5'
 HORIZ. 1"=50'
 DATE: 5/19/2005
 DRAWN BY:
 CHECKED BY: