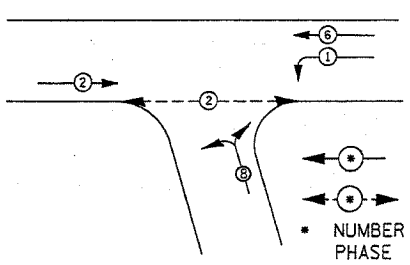
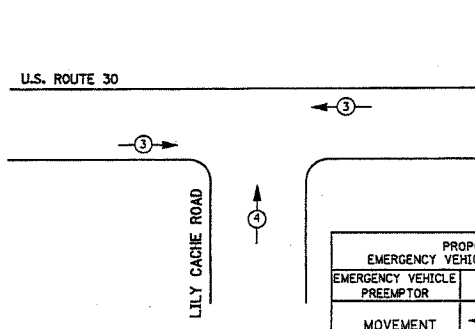


### CONTROLLER SEQUENCE



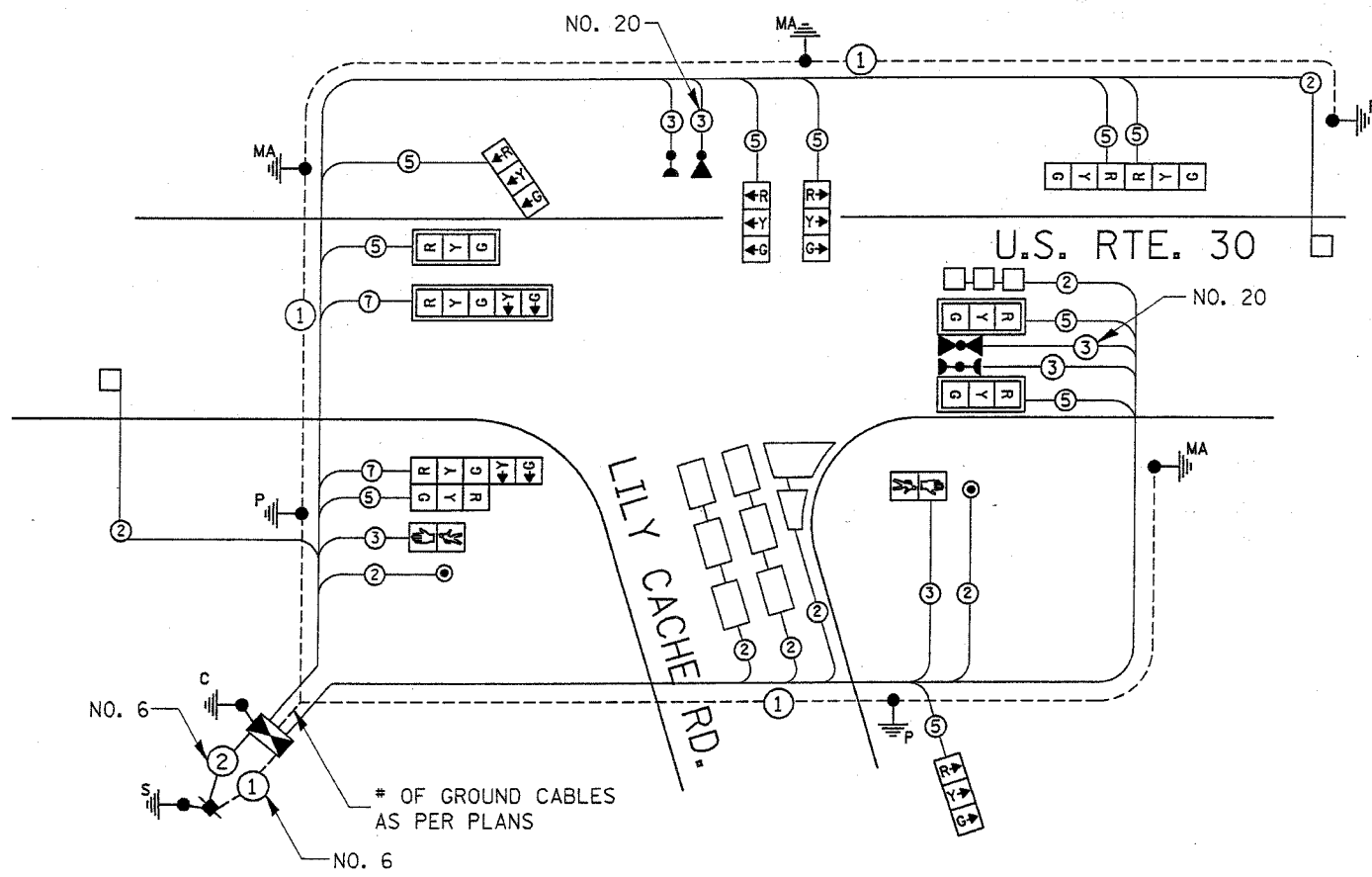
**LEGEND**  
 ○ → DUAL ENTRY PHASE  
 ○ → PEDESTRIAN PHASE  
 \* NUMBER REFERS TO ASSOCIATED PHASE

### TEMPORARY PHASE DESIGNATION DIAGRAM (NOT TO SCALE)



PROPOSED EMERGENCY VEHICLE PREEMPTORS	
EMERGENCY VEHICLE PREEMPTOR	3 4
MOVEMENT	← →

### TEMPORARY EMERGENCY VEHICLE PREEMPTION SEQUENCE (NOT TO SCALE)



### CABLE PLAN LEGEND

- | EXISTING | PROPOSED |   |
|----------|----------|---|
|          |          | 8" (200mm) TRAFFIC SIGNAL SECTION   |
|          |          | 12" (300mm) TRAFFIC SIGNAL SECTION  |
|          |          | 12" (300mm) PEDESTRIAN SIGNAL SECTION   |
|          |          | CONTROLLER CABINET  |
|          |          | SERVICE INSTALLATION  |
|          |          | TELEPHONE CONNECTION  |
|          |          | VEHICLE DETECTOR, INDUCTIVE LOOP  |
|          |          | MAGNETIC DETECTOR   |
|          |          | EMERGENCY VEHICLE LIGHT DETECTOR  |
|          |          | CONFIRMATION BEACON   |
|          |          | PUSHBUTTON DETECTOR   |
|          |          | DENOTES NUMBER OF CONDUCTORS, ALL CABLE NO. 14 EXCEPT AS INDICATED. ALL LOOP DETECTOR CABLE TO BE SHIELDED. |
|          |          | GROUND CABLE IN CONDUIT NO. 6 SOLID COPPER (GREEN)  |
|          |          | FIBER OPTIC CABLE IN CONDUIT NO. 62.5/125 MM12F SM12F   |
|          |          | SIGNAL FACE WITH BACKPLATE, "P" INDICATES PROGRAMMED HEAD   |
|          |          | RAILROAD CONTROL CABINET  |
|          |          | GROUND ROD AT HANDHOLE (H), DOUBLE HANDHOLE (H), OR CONTROLLER (C).   |
|          |          | GROUND ROD AT POST (P), OR MAST ARM POLE (MA).  |
|          |          | GROUND ROD AT ELECTRIC SERVICE INSTALLATION   |

### SCHEDULE OF QUANTITIES

ITEM	UNIT	QNTY.	ITEM	UNIT	QNTY.
SIGN PANEL - TYPE 1	SQ F	26	STEEL MAST ARM ASSEMBLY AND POLE, 28 FT.	EACH	2
CONDUIT IN TRENCH, 2" DIA., GALVANIZED STEEL	FOOT	585	CONCRETE FOUNDATION, TYPE A	FOOT	20
CONDUIT IN TRENCH, 2 1/2" DIA., GALVANIZED STEEL	FOOT	220	CONCRETE FOUNDATION, TYPE D	FOOT	4
CONDUIT IN TRENCH, 4" DIA., GALVANIZED STEEL	FOOT	65	CONCRETE FOUNDATION, TYPE E 30-INCH DIAMETER	FOOT	30
CONDUIT PUSHED, 2" DIA., GALVANIZED STEEL	FOOT	125	TRAFFIC SIGNAL BACKPLATE, LOUVERD, ALUMINUM	EACH	4
CONDUIT PUSHED, 3" DIA., GALVANIZED STEEL	FOOT	40	INDUCTIVE LOOP DETECTOR	EACH	6
CONDUIT PUSHED, 4" DIA., GALVANIZED STEEL	FOOT	205	DETECTOR LOOP, TYPE 1	FOOT	410
HEAVY-DUTY HANDHOLE	EACH	6	* LIGHT DETECTOR	EACH	2
DOUBLE HANDHOLE	EACH	1	* LIGHT DETECTOR AMPLIFIER	EACH	1
TRENCH AND BACKFILL FOR ELECTRICAL WORK	FOOT	860	PEDESTRIAN PUSH-BUTTON	EACH	2
MAINTENANCE OF EXISTING TRAFFIC SIGNAL INSTALLATION	EACH	1	TEMPORARY TRAFFIC INSTALLATION	EACH	1
FULL ACTUATED CONTROLLER AND TYPE IV CABINET	EACH	1	REMOVE EXISTING TRAFFIC SIGNAL EQUIPMENT	EACH	1
ELECTRIC CABLE IN CONDUIT, SIGNAL NO. 14 2C	FOOT	300	SERVICE INSTALLATION, POLE MOUNT	EACH	1
ELECTRIC CABLE IN CONDUIT, SIGNAL NO. 14 3C	FOOT	740	* ELECTRIC CABLE IN CONDUIT NO. 20 3/C TWISTED, SHIELDED	FOOT	455
ELECTRIC CABLE IN CONDUIT, SIGNAL NO. 14 5C	FOOT	2070	SIGNAL HEAD, L.E.D., 1-FACE, 3-SECTION, BRACKET MOUNTED	EACH	2
ELECTRIC CABLE IN CONDUIT, SIGNAL NO. 14 7C	FOOT	250	SIGNAL HEAD, L.E.D., 2-FACE, 3-SECTION, BRACKET MOUNTED	EACH	1
ELECTRIC CABLE IN CONDUIT, LEAD-IN, NO. 14 1 PAIR	FOOT	1640	SIGNAL HEAD, L.E.D., 1-FACE, 3-SECTION, MAST ARM MOUNTED	EACH	5
ELECTRIC CABLE IN CONDUIT, SERVICE, NO. 6 2C	FOOT	40	SIGNAL HEAD, L.E.D., 1-FACE, 5-SECTION, MAST ARM MOUNTED	EACH	1
TRAFFIC SIGNAL POST, GALVANIZED STEEL 14 FT.	EACH	2	SIGNAL HEAD, L.E.D., 2-FACE, 1-3 SECTION, 1-5 SECTION	EACH	1
TRAFFIC SIGNAL POST, GALVANIZED STEEL 16 FT.	EACH	1	BRACKET MOUNTED	EACH	1
ELECTRIC CABLE IN CONDUIT, GROUNDING, NO.6 1C	FOOT	648	PEDESTRIAN SIGNAL HEAD, L.E.D., 1-FACE, BRACKET MOUNTED	EACH	2
STEEL MAST ARM ASSEMBLY AND POLE, 22 FT	EACH	1			

\* 100% COST TO THE VILLAGE PLAINFIELD

I.D.O.T TRAFFIC SIGNAL INSTALLATION ELECTRICAL SERVICE REQUIREMENTS				TOTAL WATTAGE	
TYPE	NO. LAMPS	WATTAGE	% OPERATION		
SIGNAL (RED)	9	135	17	0.50	76.5
	9	135	25	0.25	56.26
	9	135	15	0.25	33.75
ARROW	13	135	12	0.10	15.00
PED. SIGNAL	2	90	25	1.00	50.00
CONTROLLER	1	100	100	1.00	100.0
ILLUM. SIGN		80		0.05	
FLASHER				0.50	
TOTAL =				332.1	

ENERGY COSTS TO:  
 ILLINOIS DEPARTMENT OF TRANSPORTATION  
 201 WEST CENTER COURT  
 SCHAMBURG, ILLINOIS 60196-1096  
 ENERGY SUPPLY CONTACT: LOU NUÑEZ  
 PHONE: (815) 394-6138  
 COMPANY: Com Ed

FOUNDATION (DEPTH)	FT. (m)	CABLE SLACK	FT. (m)	VERTICAL	FT. (m)
TYPE A - POST	4 (1.2)	HANDHOLE	6.5 (2.0)	ALL FOUNDATIONS	3.5 (1.0)
D - CONTROLLER	4 (1.2)	DOUBLE HANDHOLE	13 (4.0)	MAST ARM (L) POLE	20'-H-2'=(6m+L-0.5m)=
E - M. ARM POLE		SIGNAL POST	2 (1.0)	BRACKET MOUNTED	13 (4.0)
		24" (600mm)	10 (3.0)	CONTROLLER CAB.	1 (0.5)
		30" (750mm)	15 (4.6)	FIBER OPTIC	13 (4.0)
				ELECTRIC SERVICE	1 (0.5)
				GROUND CABLE	1 (0.5)
				POST MOUNTED	6 (1.8)

REVISIONS	
NAME	DATE

ILLINOIS DEPARTMENT OF TRANSPORTATION  
**PROPOSED CABLE PLAN**  
**US RTE 30 @**  
**LILY CACHE ROAD**  
 SCALE: 1"=20'  
 DATE 02-05-2005  
 DRAWN BY: SM  
 DESIGNED BY: SM  
 CHECKED BY: DAD