

**ELEVATION - PANEL 2**  
Looking South

**NOTES:**

1. Reinforcement designated 3x2-#4, etc., indicates 3 lines of #4 bars with 2 bars per line.
2. Reinforcement bars designated (E) shall be epoxy coated.
3. Minimum bar laps: #5 = 1'-9", #7 = 2'-9"
4. For typical concrete facing sections and details, including joints, rustication, etc., see Sheet W-8.
5. For details of concrete parapet to be cast on top of concrete facing, see Sheet W-9.

**BILL OF MATERIAL**

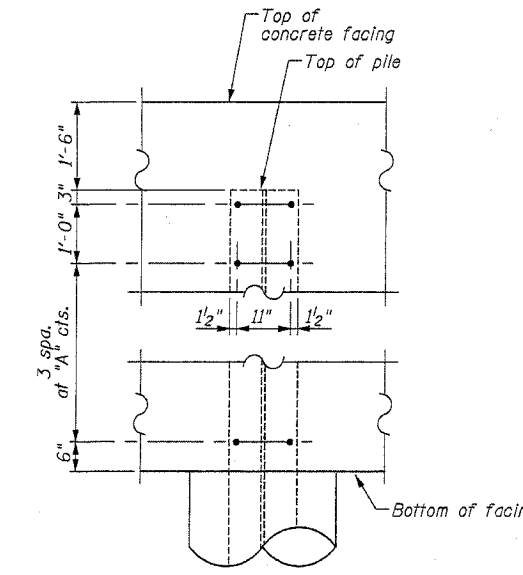
Bar	No.	Size	Length	Shape
d(E)	80	#4	3'-0"	
d1(E)	80	#6	3'-9"	
h	6	#7	28'-5"	
h1	24	#5	27'-9"	
h2	12	#7	29'-6"	
h3	48	#5	28'-6"	
v1	320	#5	5'-10"	

Item	Unit	Quantity
Porous Granular Embankment	Cu. Yd.	114
Structure Excavation	Cu. Yd.	30
Concrete Structures	Cu. Yd.	28.4
Stud Shear Connectors	Each	70
Furnishing Soldier Piles (W Section)	Foot	189
Reinforcement Bars	Pound	6854
Reinforcement Bars, Epoxy Coated	Pound	611
Geocomposite Wall Drain	Sq. Yd.	74
Drilling and Setting Soldier Piles (In Soil)	Cu. Ft.	562
Drilling and Setting Soldier Piles (In Rock)	Cu. Ft.	98
Rustication Finish	Sq. Ft.	507

**WALL INFORMATION - PANEL 2**

Location	Station	Front Face of Facing Offset (ft.)	Top of Facing Elevation	Bottom of Facing Elevation	Facing Height	Top of Rock Elevation	Pile Embedment in Soil (ft.)	Minimum Pile Embedment in Rock (ft.)	Top of Pile Elevation	Bottom of Pile Elevation	Pile Length (ft.)	Pile Type	Shear Stud Connectors	
													Dim. "A" (ft.)	Total
Start Panel	3211.87	43.00 Lt	599.95	591.55	8.40									
Pile 8	3207.87	43.00 Lt	599.97	591.47	8.50	573.30	17.00	0.00	598.47	574.47	24.00	W14x90	1.75	10
Pile 9	3195.87	43.00 Lt	600.02	591.24	8.78	573.30	17.00	0.00	598.52	574.24	24.28	W14x90	1.84	10
Pile 10	3183.87	43.00 Lt	600.07	591.01	9.06	573.30	17.00	0.00	598.57	574.01	24.56	W14x90	1.94	10
Pile 11	3171.87	43.00 Lt	600.12	590.79	9.34	573.58	17.20	5.00	598.62	568.58	30.04	W14x90	2.03	10
Pile 12	3159.87	43.00 Lt	600.17	590.56	9.62	574.24	16.31	5.00	598.67	569.24	29.43	W14x90	2.12	10
Pile 13	3147.87	43.00 Lt	600.23	590.33	9.90	574.90	15.42	5.00	598.73	569.90	28.82	W14x120	2.22	10
Pile 14	3135.87	43.00 Lt	600.28	590.10	10.18	575.57	14.53	5.00	598.78	570.57	28.21	W14x120	2.31	10
End Panel	3131.87	43.00 Lt	600.29	590.02	10.27									



**SHEAR STUD DETAIL**

DESIGNED	MJM
CHECKED	WHE
DRAWN	EAB
CHECKED	WHE

**LOWCO, INC.**  
CONSULTING ENGINEERS 700 EAST DIEHL ROAD, SUITE 180  
NAPERVILLE, ILLINOIS 60563 (630) 577-9100

REVISIONS	
NAME	DATE

ILLINOIS DEPARTMENT OF TRANSPORTATION  
**WALL ELEVATION (2 OF 5)**  
DRILLED SOLDIER PILE WALL  
US ROUTE 30 (LINCOLN HIGHWAY)  
OVER LILY CACHE CREEK  
WILL COUNTY  
F.A.P. ROUTE 0575 SEC. 14BR  
STATION 31+00.61 NEW STRUCTURE NO. 099-W012  
DATE 03/24/05