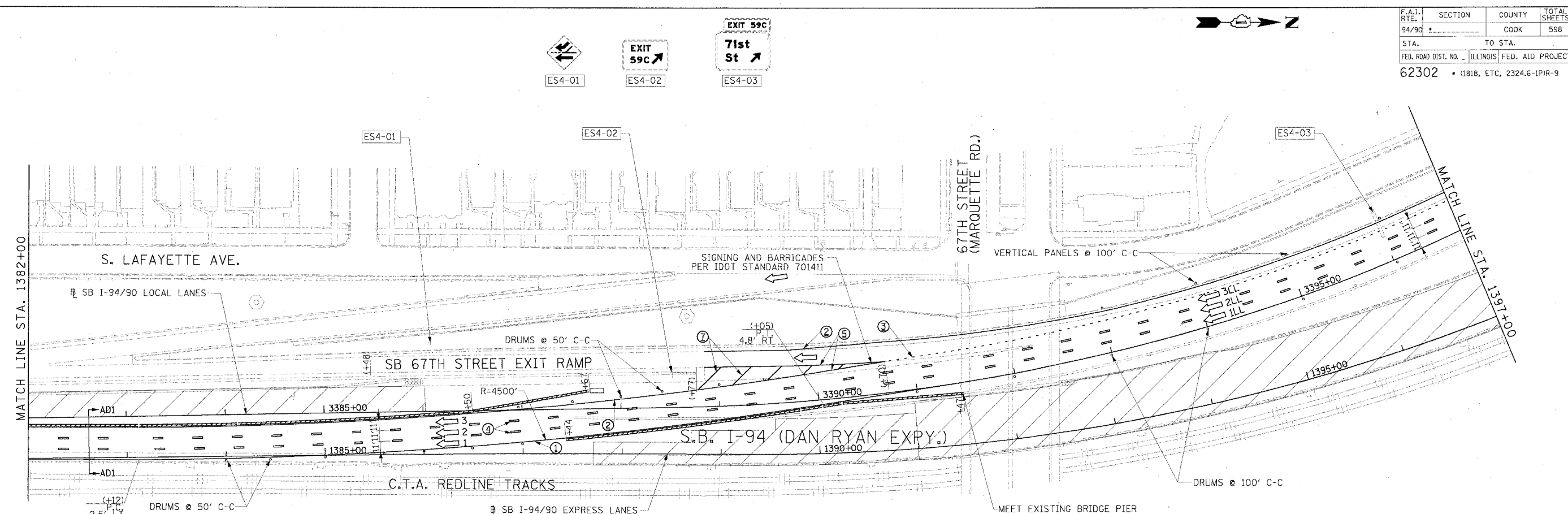
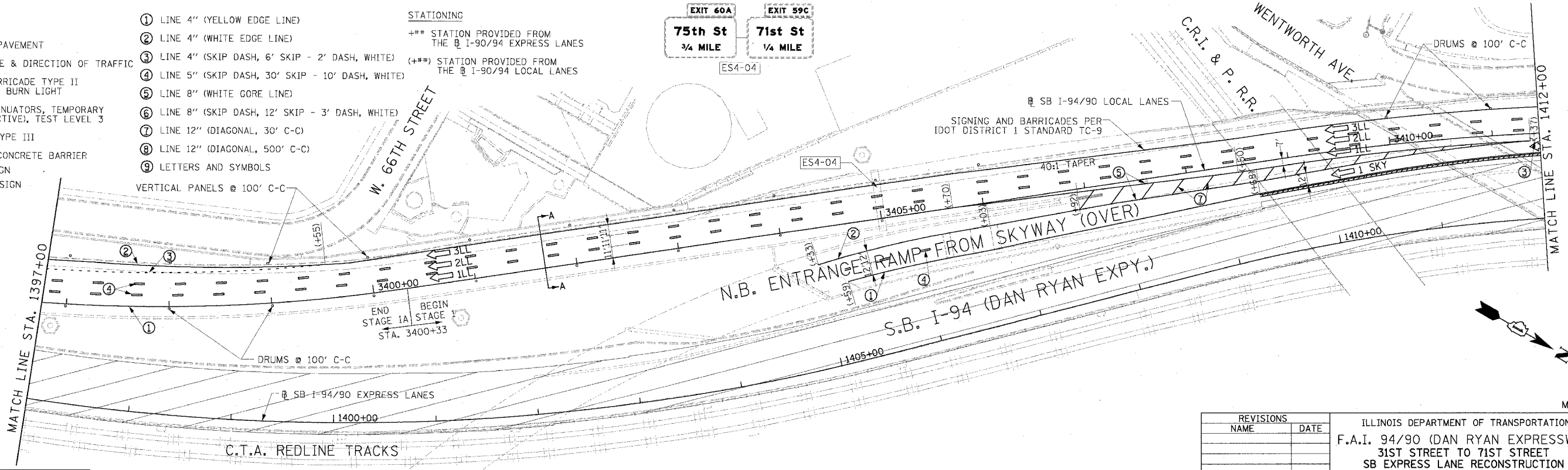


F.A.I. RTE. 94/90	SECTION	COUNTY COOK	TOTAL SHEETS 598	SHEET NO. 90
STA. 62302	TO STA. ILLINOIS FED. AID PROJECT			
62302 • 1818, ETC, 2324.6-1PIR-9				



- LEGEND**
- WORK ZONE
 - TEMPORARY PAVEMENT
 - TRAFFIC LANE & DIRECTION OF TRAFFIC
 - DRUM OR BARRICADE TYPE II WITH STEADY BURN LIGHT
 - IMPACT ATTENUATORS, TEMPORARY (NON-REDIRECTIVE), TEST LEVEL 3
 - BARRICADE TYPE III
 - TEMPORARY CONCRETE BARRIER
 - EXISTING SIGN
 - TEMPORARY SIGN
- STATIONING**
- +++ STATION PROVIDED FROM THE SB I-90/94 EXPRESS LANES
 - (+**) STATION PROVIDED FROM THE SB I-90/94 LOCAL LANES
- ① LINE 4" (YELLOW EDGE LINE)
 - ② LINE 4" (WHITE EDGE LINE)
 - ③ LINE 4" (SKIP DASH, 6' SKIP - 2' DASH, WHITE)
 - ④ LINE 5" (SKIP DASH, 30' SKIP - 10' DASH, WHITE)
 - ⑤ LINE 8" (WHITE GORE LINE)
 - ⑥ LINE 8" (SKIP DASH, 12' SKIP - 3' DASH, WHITE)
 - ⑦ LINE 12" (DIAGONAL, 30' C-C)
 - ⑧ LINE 12" (DIAGONAL, 500' C-C)
 - ⑨ LETTERS AND SYMBOLS



Edwards AND Kelcey
 ONE NORTH FRANKLIN
 CHICAGO, IL 60606
 PHONE: (312) 251-3000
 FAX: (312) 251-3015
 WEB: WWW.EDKCORP.COM

NOTE:
 ALL PAVEMENT MARKINGS ON THIS SHEET ARE PAVEMENT MARKING TAPE, TYPE III UNLESS OTHERWISE NOTED.

REVISIONS	
NAME	DATE

ILLINOIS DEPARTMENT OF TRANSPORTATION
 F.A.I. 94/90 (DAN RYAN EXPRESSWAY)
 31ST STREET TO 71ST STREET
 SB EXPRESS LANE RECONSTRUCTION
 MAINTENANCE OF TRAFFIC PLAN
 SOUTHBOUND STA. 1382+00 TO STA. 1412+00
 STAGE 1A

SCALE: 1"=50'
 DATE: 7/7/05

DRAWN BY: TAI
 CHECKED BY: PJM

P:\03009035\Con 148\5-CADD\5\mif50022.dwg 06/24/2005 09:35:02 AM