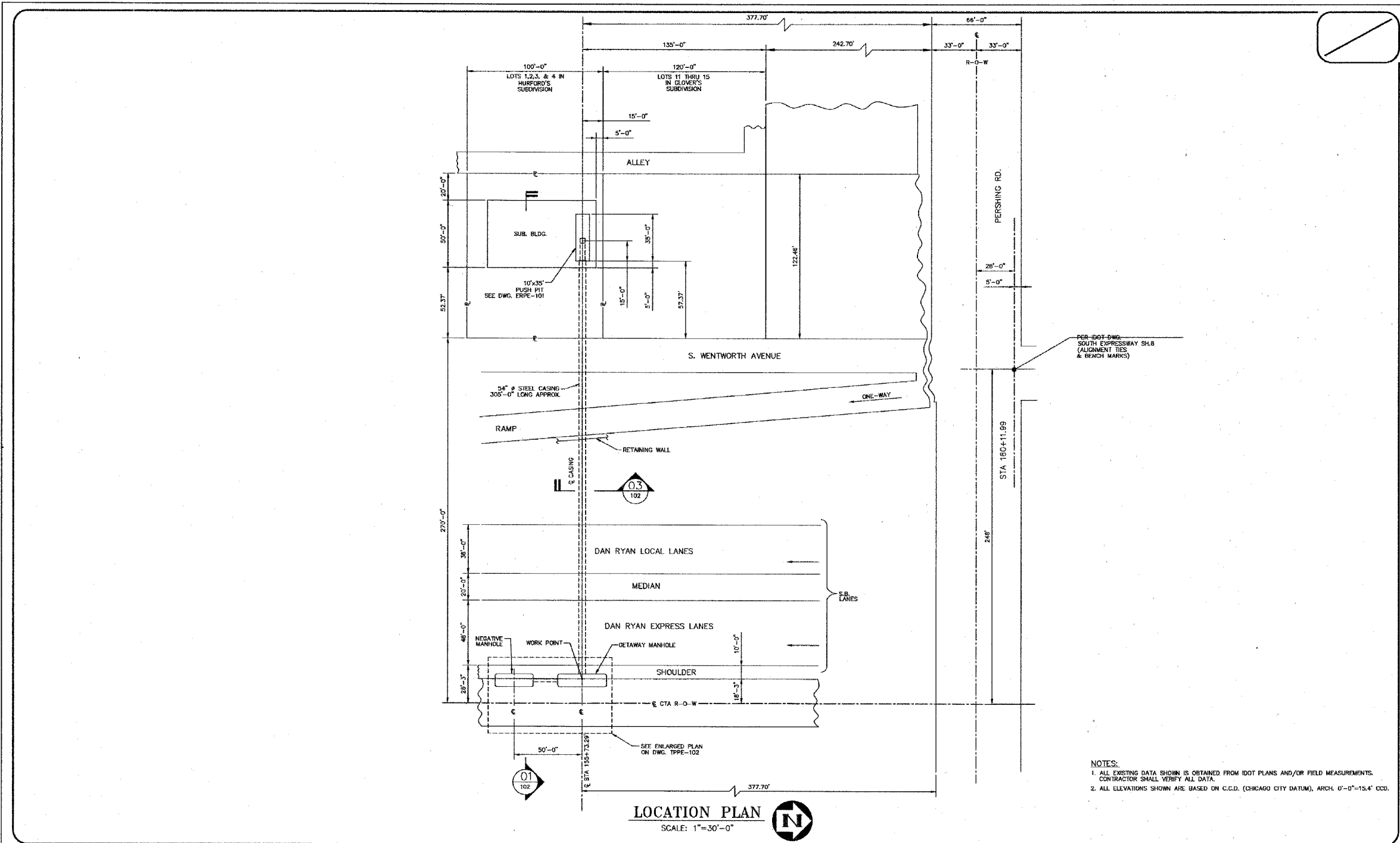


F.A.I.	SECTION	COUNTY	TOTAL SHEETS	SHEET NO.
94/90	*	COOK	598	257
STA.	TO STA.			
FED. ROAD DIST. NO.	ILLINOIS FED. AID PROJECT			
62302	*1818, ETC. 2324.6-1PR-9			



**NOTES:**  
 1. ALL EXISTING DATA SHOWN IS OBTAINED FROM IDOT PLANS AND/OR FIELD MEASUREMENTS. CONTRACTOR SHALL VERIFY ALL DATA.  
 2. ALL ELEVATIONS SHOWN ARE BASED ON C.C.D. (CHICAGO CITY DATUM), ARCH. 0'-0"=15.4' CDD.

In Charge HS  
 Designed By DP  
 Drawn By VA  
 Checked By DP  
 Approved By HS

**LDP**  
 Laramore, Douglass And Popham, Inc.  
 Consulting Engineers  
 IN ASSOCIATION WITH  
 Rubinos & Mesia Engineers, Inc.  
 Architecture • Engineering • Construction Management  
 Environmental Design International  
 Geotechnical Engineering Corporation  
 Ground Engineering Consultants

No.	Date	Revision	App'd
1	05-27-03	ISSUED FOR BIDS	HS



Chicago Transit Authority  
 Engineering Department

SUBSTATION ENHANCEMENT DAN RYAN-RED LINE  
 PE, 42, 50, PR & 79

**PERSHING SUBSTATION**  
**DC CABLE GETAWAY LAYOUT-PLAN**

Scale: AS NOTED Date: 05-27-03 J.O. No.:

Sheet No. TPPE-101 of

**BOWMAN, BARRETT & ASSOCIATES INC.**  
 CONSULTING ENGINEERS  
 Chicago, Illinois  
 312.228.0100  
 www.bbainc.com

FOR INFORMATION ONLY

REVISIONS	
NAME	DATE

ILLINOIS DEPARTMENT OF TRANSPORTATION  
 F.A.I. 94/90 (DAN RYAN EXPRESSWAY)  
 31ST STREET TO 71ST STREET  
 SB EXPRESS LANE RECONSTRUCTION  
 CTA PERSHING  
 SUBSTATION PLANS

SCALE: NTS DRAWN BY: BDC  
 DATE: 07/07/05 CHECKED BY: JDC