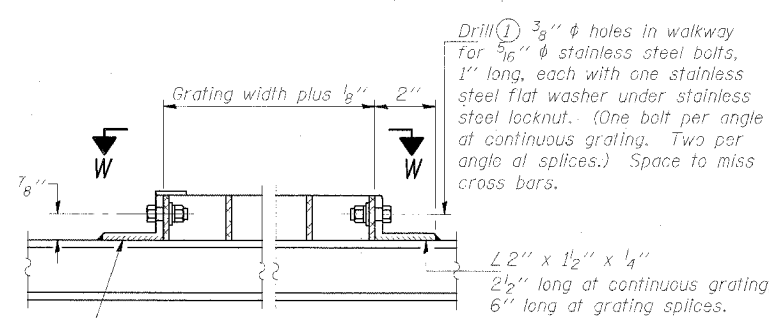
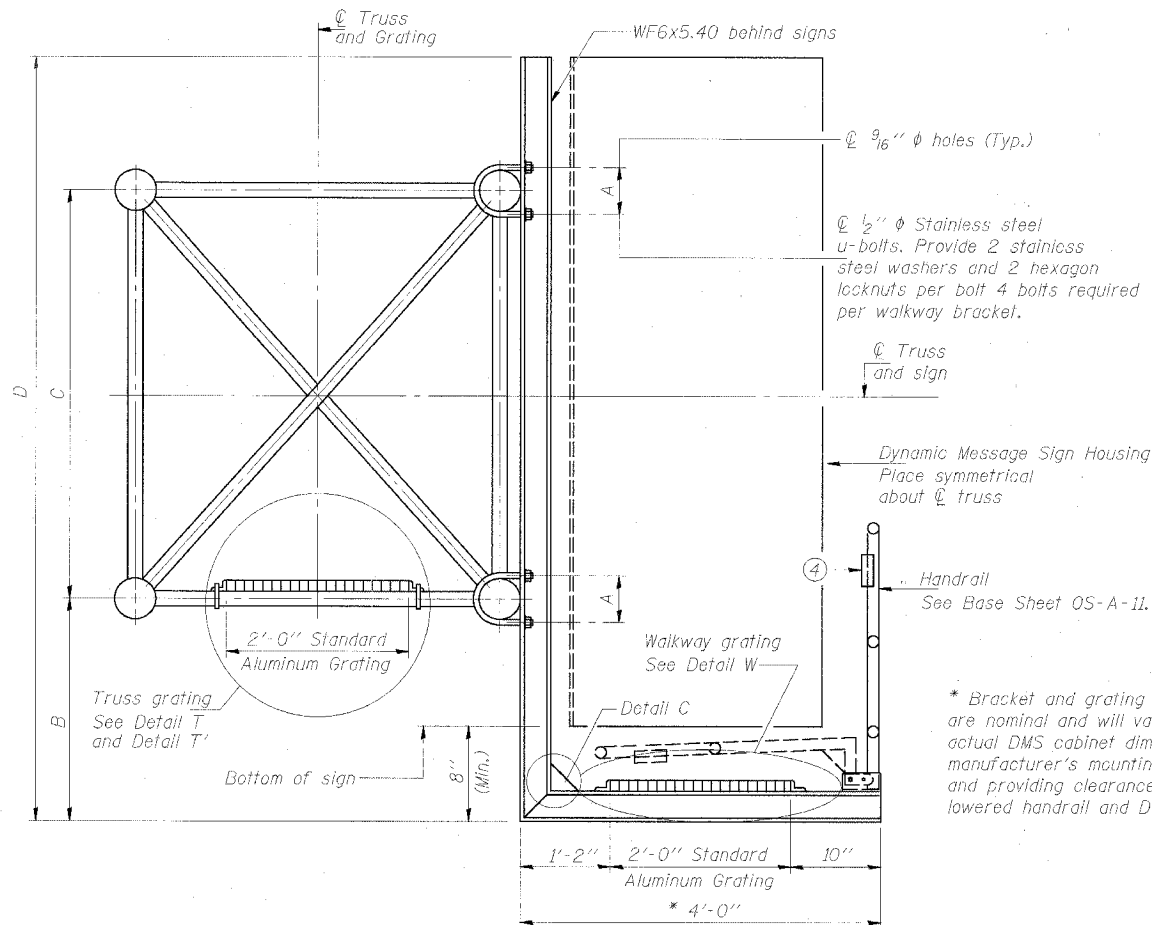


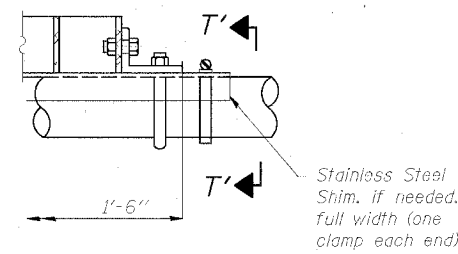
STATE OF ILLINOIS
DEPARTMENT OF TRANSPORTATION

ROUTE NO.	SECTION	COUNTY	SHEET	SHEET NO.
90/94	*	COOK	598	347

*(1818, ETC, 2324.6-1P) R-9
62302

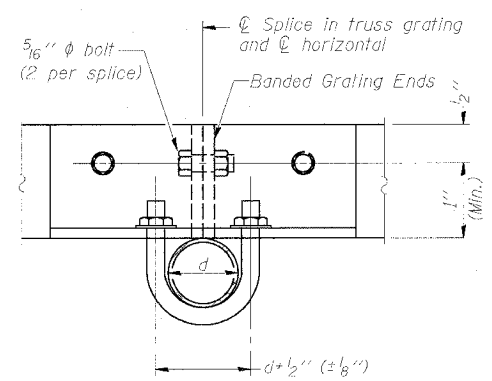


DETAIL W
(Walkway grating)

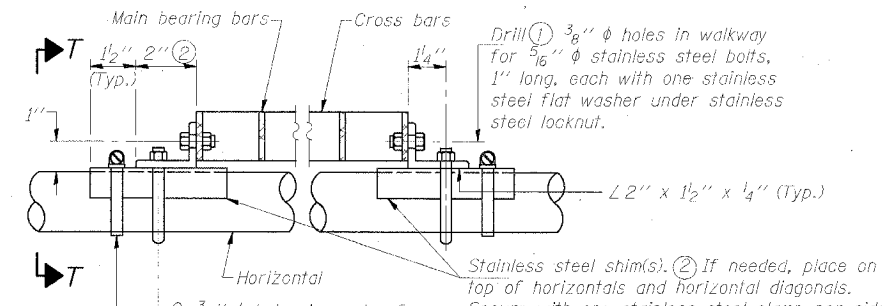


DETAIL T'

(Truss grating splice)
Details not shown same as Detail T.
Alternate materials may be used subject to the Engineer's review and approval.

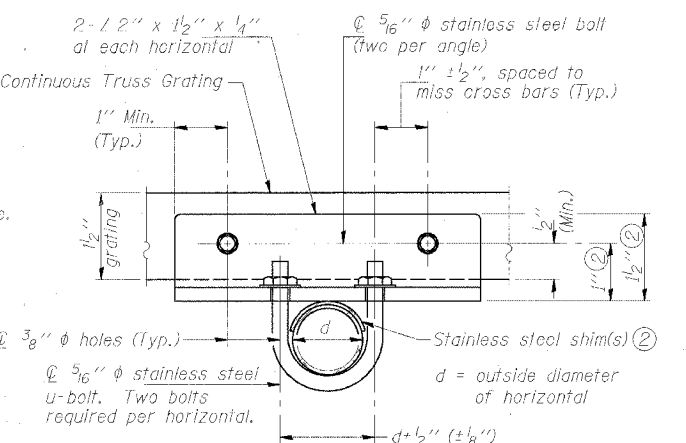


SECTION T'-T'



DETAIL T

(Continuous Truss grating)



SECTION T-T

SPECIFICATIONS FOR STANDARD ALUMINUM GRATING

Main Bearing Bars shall be 3/16 inch x 1 1/2 inch on 1 3/8 inch centers and conform to ASTM B221 Alloy 6061-T6.
Cross bars shall be 3/16 inch x 1 1/2 inch on 4 inch centers and conform to ASTM B221 Alloy 6063-T5 or 6061-T6.

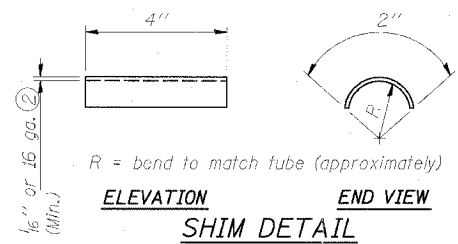
OR

Aluminum Grating with modified "I" sections for main bearing bars shall meet the following requirements:
Main bars shall conform to ASTM B221 Alloy 6061-T6 and have a minimum section modulus equal to 0.0705 in.³ per bar, a depth of 1 1/2 inch, spaced on 1 3/8 inch centers.
Cross bars shall conform to ASTM B221 Alloy 6063-T5 or T-42 and spaced on 4 inch centers.

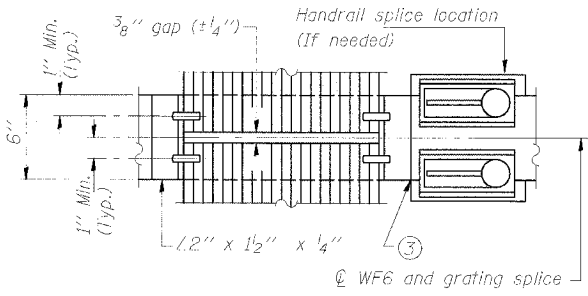
Structure Number	Station	A	B	C	D
IS0161094R057.7	1476+22.50	7 1/2"	1'-5"	7'-0"	9'-2"

- Drilling holes in grating may be done in shop or field, based on Contractor's preference and subject to accurate alignment.
- Stainless steel shims shall be placed as shown in Detail T if needed to compensate for alignment variations between horizontal and diagonal pipes beyond adjustment provided by angles. Thicker shims may be used subject to shims performing properly.
- If Handrail Joint present, weld angle to WF6 and 1/4 inch extension bars. (See Base Sheet OS-A-11-DMS2.)
- 1/8 inch x 1/2 inch x 2 inch welded to handrail posts to protect locations that contact grating.

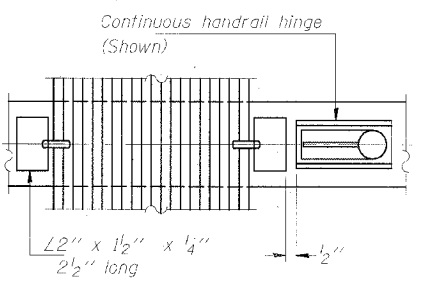
SECTION B-B



SHIM DETAIL

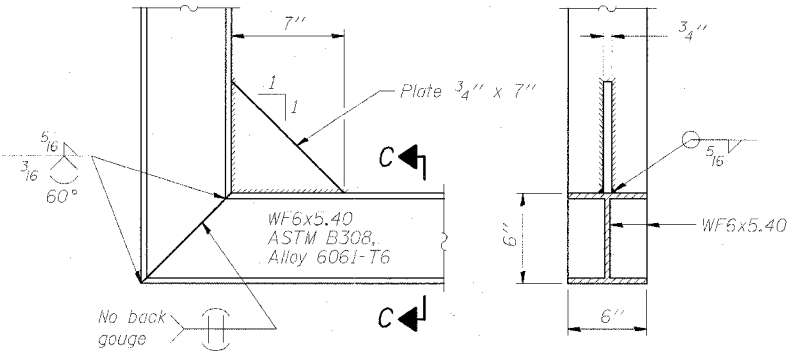


(AT WALKWAY GRATING SPLICE)



(CONTINUOUS WALKWAY GRATING)

SECTION C-C



DETAIL C

(See Detail P, Base Sheet OS-A-11-DMS2.)

DESIGNED	
CHECKED	
DRAWN	
CHECKED	

EXAMINED		19
PASSED		

NUMBER	REVISION	DATE

**OVERHEAD SIGN STRUCTURES
ALTERNATE ALUMINUM WALKWAY DETAILS**

F.A.I. 90/94 (DAN RYAN EXPRESSWAY)
31st Street to 71st Street
(SB Express Lanes)

06/24/2005 02:46:03 PM