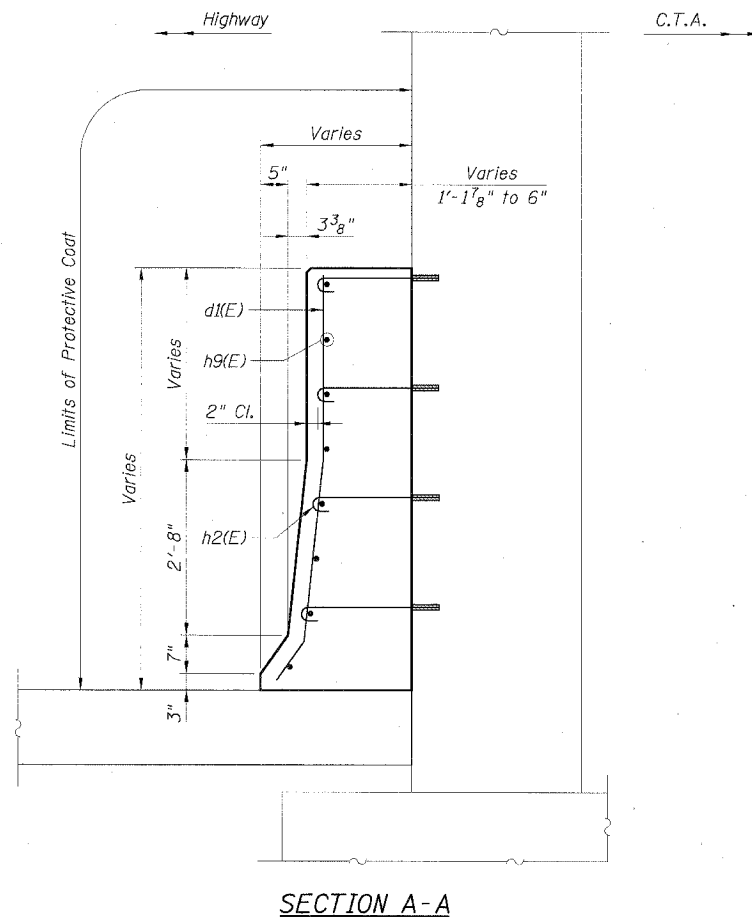
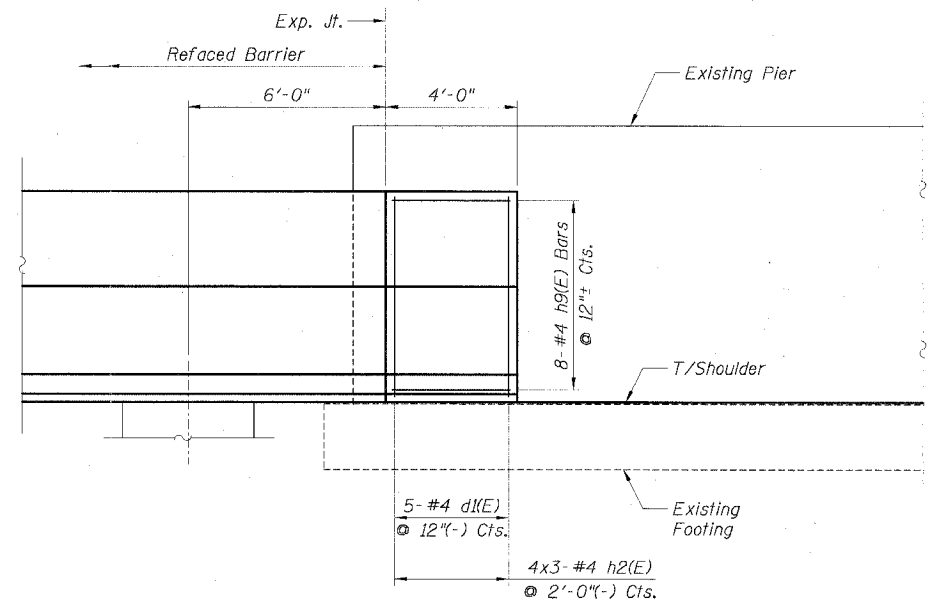
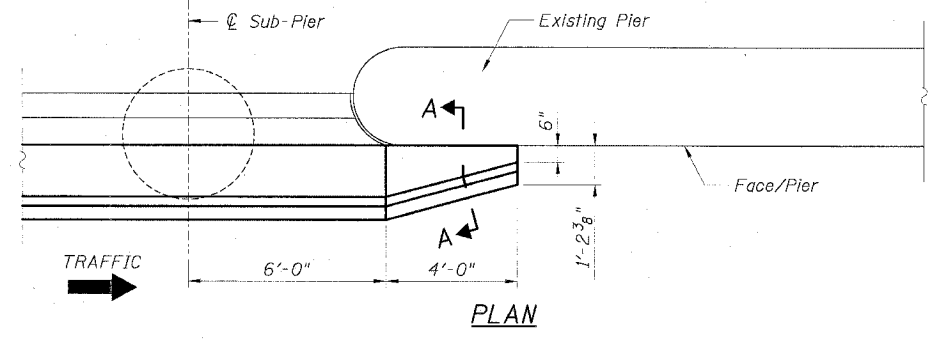


STATE OF ILLINOIS  
DEPARTMENT OF TRANSPORTATION

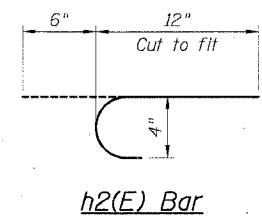
F.A.I. RTE.	SECTION	COUNTY	TOTAL SHEETS	SHEET NO.
90/94		COOK	598	417
STA.	TO STA.			
FED. ROAD DIST. NO. 1	ILLINOIS	FED. AID PROJECT		
* 1818, ETC, 2324.6-1P)R-9				62302



**BILL OF MATERIAL**

Bar	No.	Size	Length	Shape
h2(E)	12	#4	2'-4"	—
h9(E)	8	#4	3'-8"	—
d(E)	5	#4	5'-4"	—
Item	Unit	Quantity		
Reinforcement Bars, Epoxy Coated	Lbs.	60		
Concrete Structures	Cu. Yd.	0.9		
Protective Coat	Sq. Yd.	3.3		

- LEGEND:**
- Concrete Removal
- NOTES:**
1. Drilling and grouting of #4 h2(E) bars shall be in accordance with Section 584 of the Standard Specifications.
  2. The cost of drilling holes, furnishing and setting #4 h2(E) bars shall be included in the cost per cubic yard for Concrete Structures.
  3. Provide joints in facing to match those in the existing barrier.
  4. For h2(E) bar details, see Sheet B2.
  5. For Refaced Barrier details, see Sheets B2 and B3.
  6. For locations of Transition, see Roadway Plans.



REVISIONS

NAME	DATE

Sheet B9 of 18

ILLINOIS DEPARTMENT OF TRANSPORTATION  
F.A.I. 90/94 (DAN RYAN EXPRESSWAY)  
**EXISTING BARRIER WALL MODIFICATIONS  
AT CTA STATIONS  
PROPOSED T/SHOULDER BELOW EXISTING  
REFACED BARRIER TO PIER  
TRANSITION DETAILS (NO TAPER)**

SCALE: None DRAWN BY: CHD  
DATE: JULY 7, 2005 CHECKED BY: MJP

A:\P\40465\Struc\E&K\_Dwg\Struc\_B2302\03.ctb A-Barr\barrier\VT090902A-CT B3.rvt