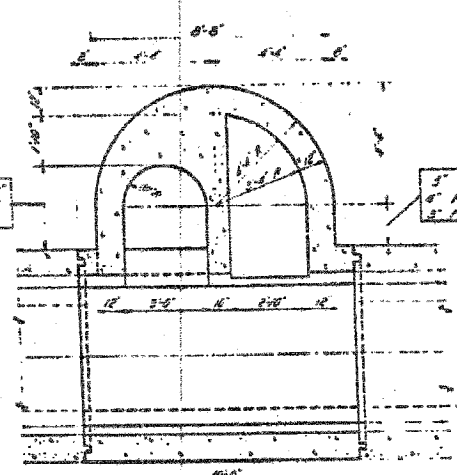
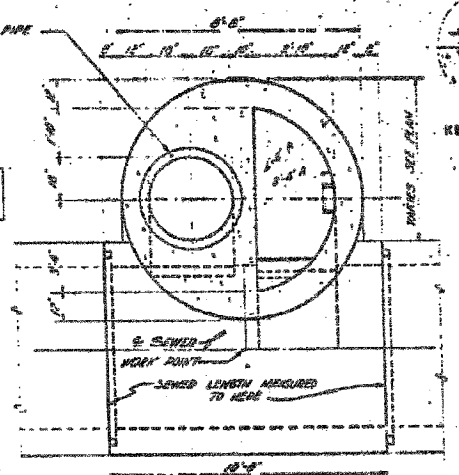


F.A.I.	SECTION	COUNTY	TOTAL SHEETS	SHEET NO.
94/90		COOK	598	467
STA.		TO STA.		
FED. ROAD DIST. NO.		ILLINOIS FED. AID PROJECT		
62302		*1818, ETC., 2324.6-1PR-9		

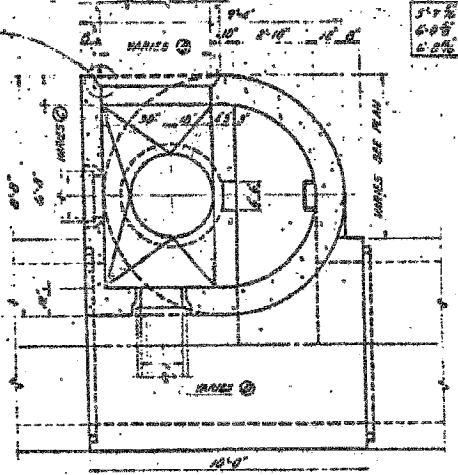
ROUTE NO.	SECTION	SUBWAY	FEET	FEET
94	2025	5000	50	50
TOTAL PROJECT LENGTH 1700.00 FEET				



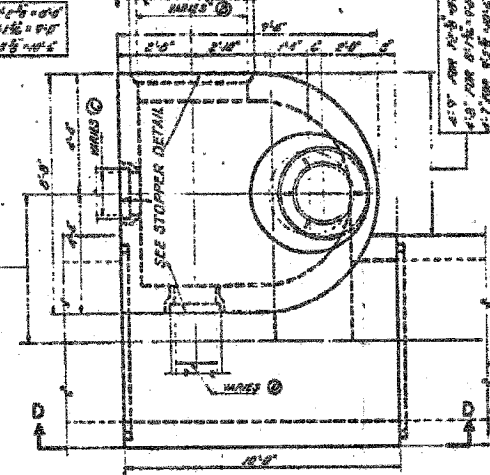
SECTIONAL PLAN C-C



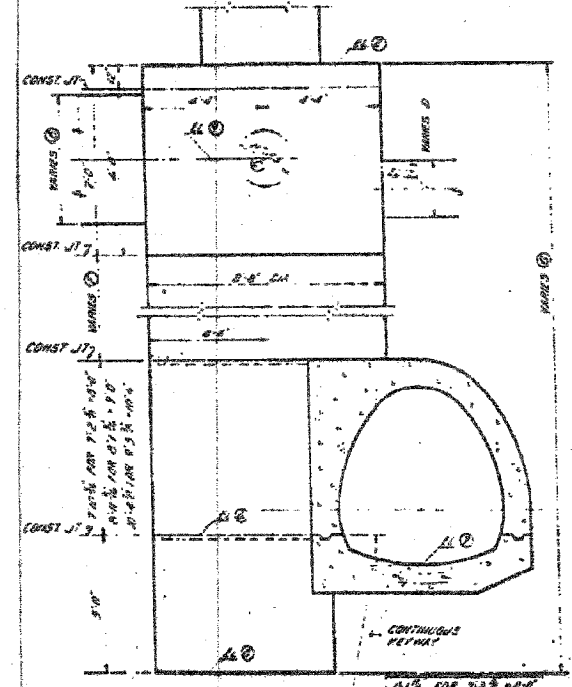
SECTIONAL PLAN B-B



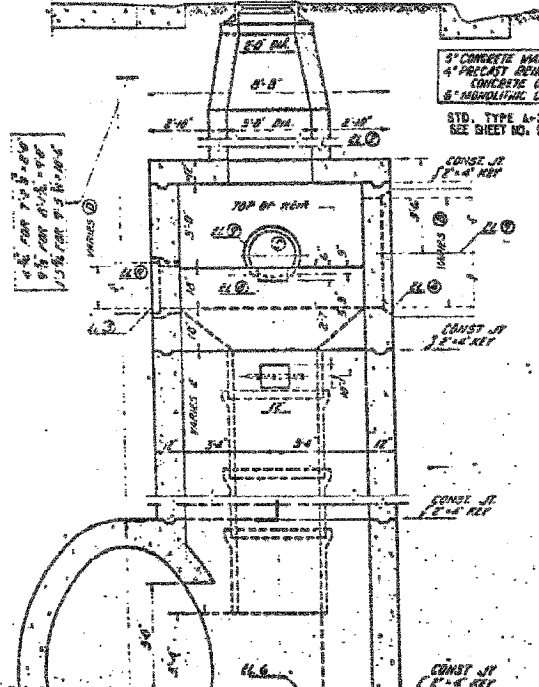
SECTIONAL PLAN A-A



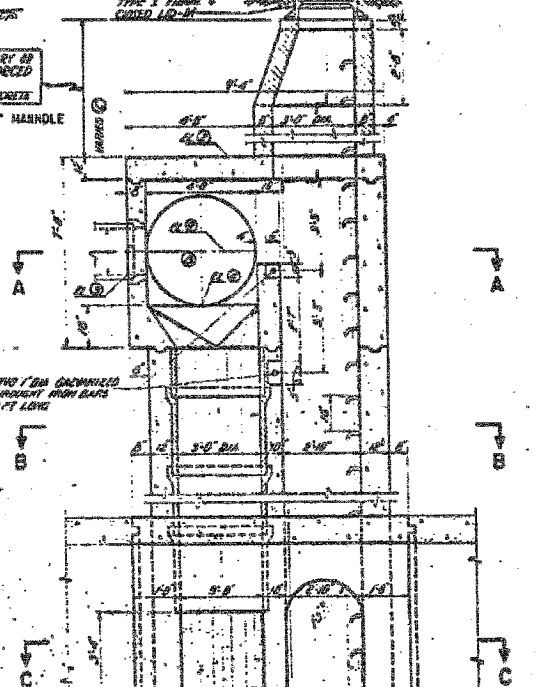
PLAN



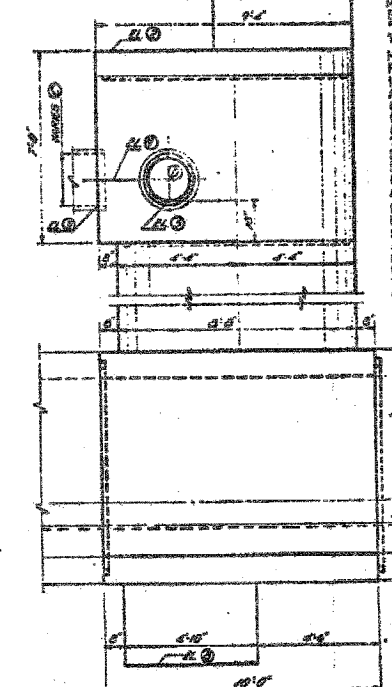
SECTION G-G



SECTION E-E



SECTION A-A



SECTION D-D

NOTES:
 MATERIALS: THAT PORTION OF THE MANHOLE PROVIDED FOR ACCESS SHALL BE CONSTRUCTED IN ACCORDANCE WITH STANDARD TYPE "A" 36" MANHOLE PLANS AND SPECIFICATIONS BELOW THE ACCESS PORTION CLASS "A" CONCRETE SHALL BE USED THROUGHOUT.
 METHOD OF CONSTRUCTION: SEE PLAN AND PROFILE SHEETS FOR LOCATION OF TYPE "A" MANHOLES AND ELEVATION OF INVERTS OF (1) 36" x 36" x 8'-0" AND (2) 36" x 36" x 10'-0" SEMI-ELLIPTICAL TRUNK SENSORS. THIS WORK SHALL COMPLY WITH SECTIONS 22.50 AND 22.55 OF THE STANDARD SPECIFICATIONS. MINIMUM STEEL CLEARANCE SHALL BE 2".
 BASIS OF PAYMENT: THE CONTRACT UNIT PRICE OF TYPE "A" MANHOLE SHALL INCLUDE ALL EXCAVATION AND BACKFILL, FURNISHING AND PLACING OF ALL MATERIALS REQUIRED INCLUDING THE STANDARD TYPE "A" 36" MANHOLE FRAME AND GRATE AS SHOWN ON THE PLANS AND THE NECESSARY CEMENT COMPLETE IN PLACE AS REQUIRED. WHERE ROCK EXCAVATION IS ENCOUNTERED IT WILL BE PAID FOR AT THE UNIT PRICE BID FOR ROCK EXCAVATION FOR STRUCTURES.
 FOR SCHEDULE OF DIMENSIONS AND ELEVATIONS FOR MANHOLE TYPE "A" SEE SHEET NO. 48
 STOPPERS SHALL BE PROVIDED AT ALL LATERAL CONNECTIONS TO MANHOLE SPECIAL TYPE B. THESE STOPPERS SHALL BE MADE OF REINFORCED CONCRETE OR OF OTHER SUITABLE MATERIAL AS APPROVED BY THE ENGINEER. THE COST OF THESE STOPPERS SHALL BE INCLUDED IN THE CONTRACT UNIT PRICE FOR MANHOLE, SPECIAL, TYPE B.
 THE QUANTITIES SHOWN FOR CLASS "A" CONCRETE AND REINFORCEMENT BARS ARE FOR INFORMATION PURPOSES ONLY AND ARE INCLUDED IN THE CONTRACT UNIT PRICE FOR MANHOLE, SPECIAL, TYPE B.

ILLINOIS DIVISION OF HIGHWAYS
 SOUTH EXPRESSWAY
 SPECIAL MANHOLE TYPE B 36S
 MAIN DRAIN

SHEET JC-15 OF JC-22

REVISIONS	NAME	DATE

ILLINOIS DEPARTMENT OF TRANSPORTATION
 F.A.I. 94/90 (DAN RYAN EXPRESSWAY)
 31ST STREET TO 71ST STREET
 SB EXPRESS LANE RECONSTRUCTION
 JUNCTION CHAMBERS
 EXISTING DROP MANHOLE PLANS
 SCALE: NTS
 DATE: 07/07/05
 DRAWN BY: BDC
 CHECKED BY: BLU

FOR INFORMATION ONLY

BOWMAN, BARRETT & ASSOCIATES INC.
 CONSULTING ENGINEERS
 Chicago, Illinois
 312.228.0100
 www.bbainc.com

S:\660\road\CH\STRUCT\STRUCT\94-90\JC-15.dwg 12/28/05 5:24:20 PM