

Project located
in CHEMUNG
TOWNSHIP

STATE OF ILLINOIS
DEPARTMENT OF TRANSPORTATION
DIVISION OF HIGHWAYS

PLANS FOR PROPOSED
HIGHWAY

F.A.P. 066 - (NORTHWEST HIGHWAY)
U.S. ROUTE 14 OVER LAWRENCE CREEK
SECTION: 21 (B&G) R
BOX CULVERT REPLACEMENTS
PROJECT: *BRF-0066(007)*
MCHENRY COUNTY
C-91-053-02

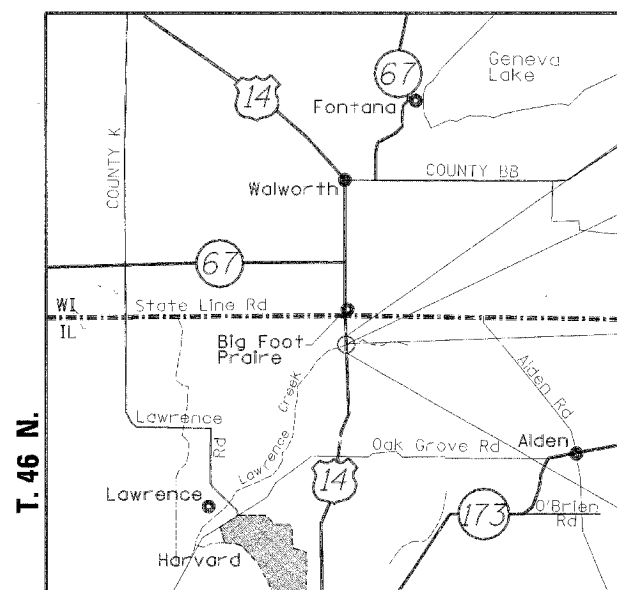
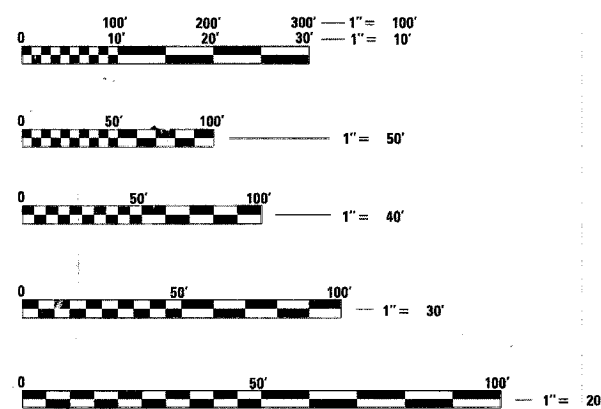
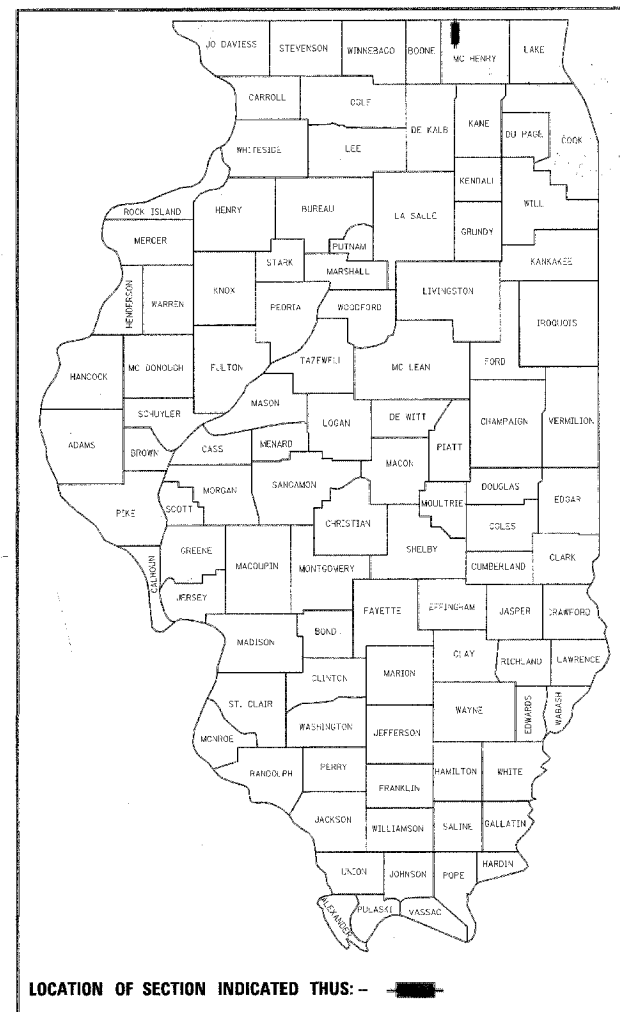
FOR INDEX OF SHEETS, SEE SHEET NO. 2

TRAFFIC DATA
2004 ADT: 6750 VEHICLES
2024 ADT: 8100 VEHICLES
2024 ADTT (SU) = 259
2024 ADTT (MU) = 381

POSTED SPEED LIMIT
55 mph

DESIGN DESIGNATION

6750(2004) OTHER PRINCIPAL ARTERIAL 2.52 (COMPOSITE-20)



R. 5 E.
CHEMUNG TOWNSHIP
LOCATION MAP
SCALE: 1:30000

Project Ends
Sta. 122 + 10
Improvement Ends
Sta. 115 + 10

Project Description

U. S. ROUTE 14 OVER LAWRENCE
CREEK CULVERT STA. 110+00
REMOVE & REPLACE EXISTING
BOX CULVERT.
EXISTING S. N. : 056-2000
NEW S. N. : 056-0074

U. S. ROUTE 14 OVER LAWRENCE
CREEK BYPASS STA. 107+00 REMOVE
EXISTING CIRCULAR CULVERT & BOX
CULVERT. REPLACE WITH A BOX
CULVERT. EXISTING S. N. : NONE
NEW S. N. : 056-0075

Improvement Begins
Sta. 104 + 00
Project Begins
Sta. 97 + 00



SEAL

STATE OF ILLINOIS
DEPARTMENT OF TRANSPORTATION
DIVISION OF HIGHWAYS

SUBMITTED *February 18, 20 05*

Dina O'Keefe/PP
DISTRICT ENGINEER

March 25, 20 05
Mike Hine/ED
ENGINEER OF DESIGN AND ENVIRONMENT

March 25, 20 05
Victor Maden/ED
DIRECTOR, DIVISION OF HIGHWAYS

PRINTED BY THE AUTHORITY
OF THE STATE OF ILLINOIS

FULL SIZE PLANS HAVE BEEN PREPARED USING STANDARD
ENGINEERING SCALES. REDUCED SIZED PLANS WILL NOT
CONFORM TO STANDARD SCALES. IN MAKING MEASUREMENTS
ON REDUCED PLANS, THE ABOVE SCALES MAY BE USED.

J.U.L.I.E.
JOINT UTILITY LOCATION INFORMATION FOR EXCAVATION
1-800-892-0123

CONTRACT NO. 62391

GROSS AND NET LENGTH OF PROJECT = 1110 ft = 0.210 mi

Applied Technologies
CONSULTING ENGINEERS
300 NJRTH MILWAUKEE AVE. SUITE E
LAKE VILLA, ILLINOIS 60046
PHONE: 847-265-7325
FAX: 847-265-7327

DIST. 1 C DESIGN CONSULTANT SERVICES PROJECT MANAGER: CATHERINE KUBLE (708) 705-4269 3287C0V