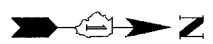
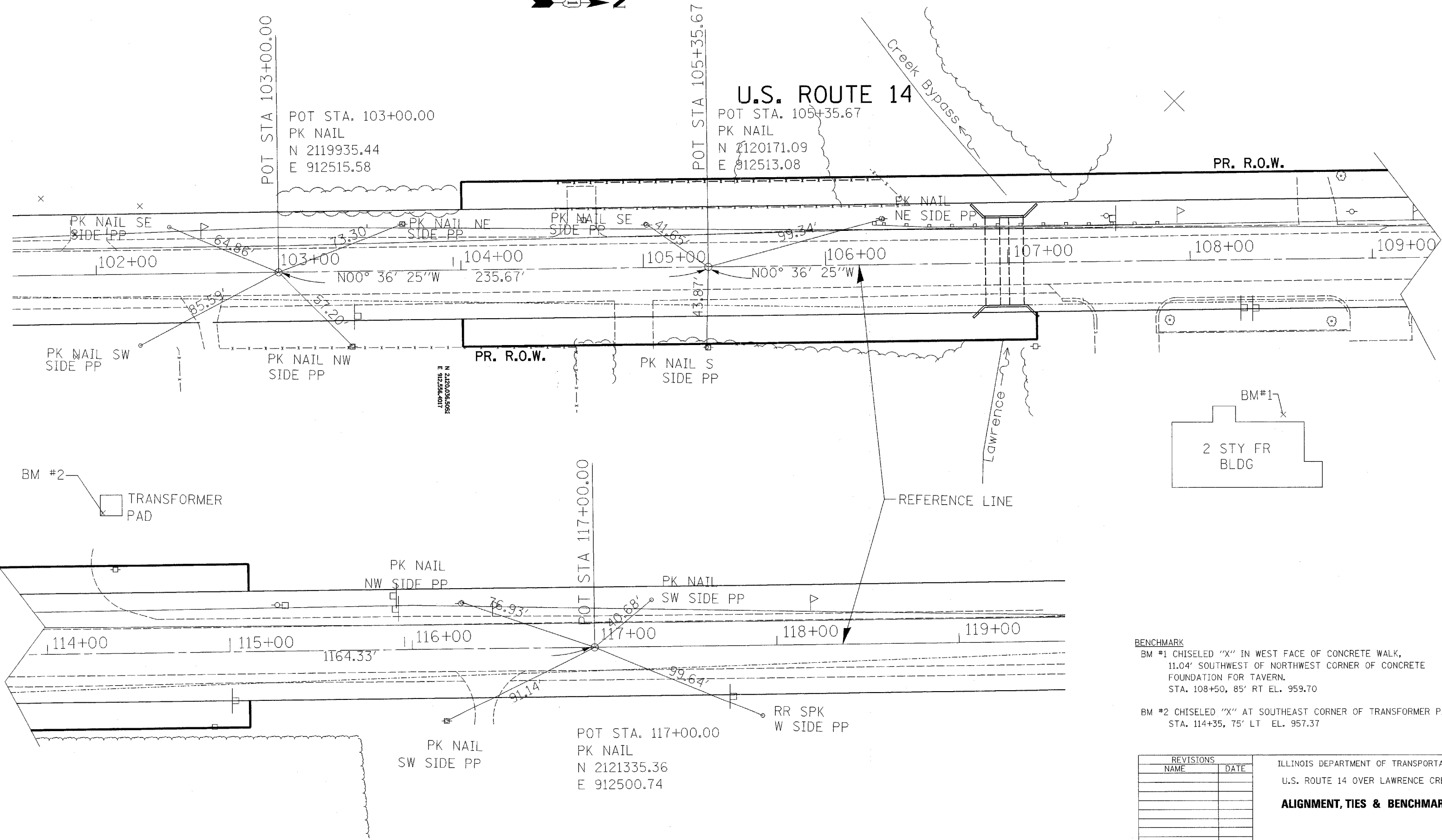


F.A.P. RTE.	SECTION	COUNTY	TOTAL SHEETS	SHEET NO.
066	21 (B&G) R	McHENRY	66	14
STA.		TO STA.		
FED. ROAD DIST. NO.	ILLINOIS	FED. AID PROJECT		

#62391



U.S. ROUTE 14



BENCHMARK
 BM #1 CHISELED "X" IN WEST FACE OF CONCRETE WALK, 11.04' SOUTHWEST OF NORTHWEST CORNER OF CONCRETE FOUNDATION FOR TAVERN. STA. 108+50, 85' RT EL. 959.70
 BM #2 CHISELED "X" AT SOUTHEAST CORNER OF TRANSFORMER PAD. STA. 114+35, 75' LT EL. 957.37

REVISIONS	
NAME	DATE

ILLINOIS DEPARTMENT OF TRANSPORTATION
 U.S. ROUTE 14 OVER LAWRENCE CREEK
ALIGNMENT, TIES & BENCHMARKS

SCALE: N.T.S.
 DATE: 2-07-05
 DRAWN BY: CLG
 CHECKED BY: JJD



3287TIE.DGN