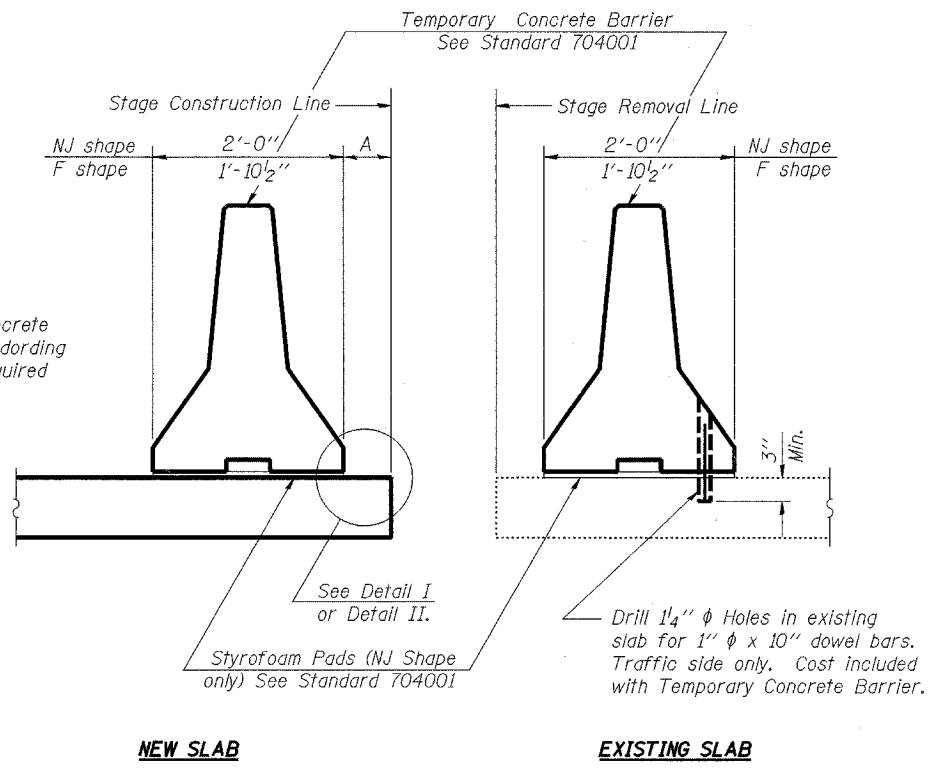


# pg 36 is Deleted #

STATE OF ILLINOIS  
DEPARTMENT OF TRANSPORTATION

ROUTE NO.	SECTION	COUNTY	TOTAL SHEETS	SHEET NO.	SHEET NO. 5 8 SHEETS
F.A.P. 066	21B&GJR	McHENRY	66	37	
FED. ROAD DIST. NO. 7		ALIGNMENT	FED. AID PROJECT-		

#62391

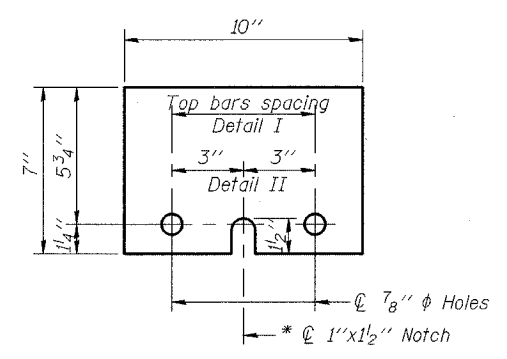
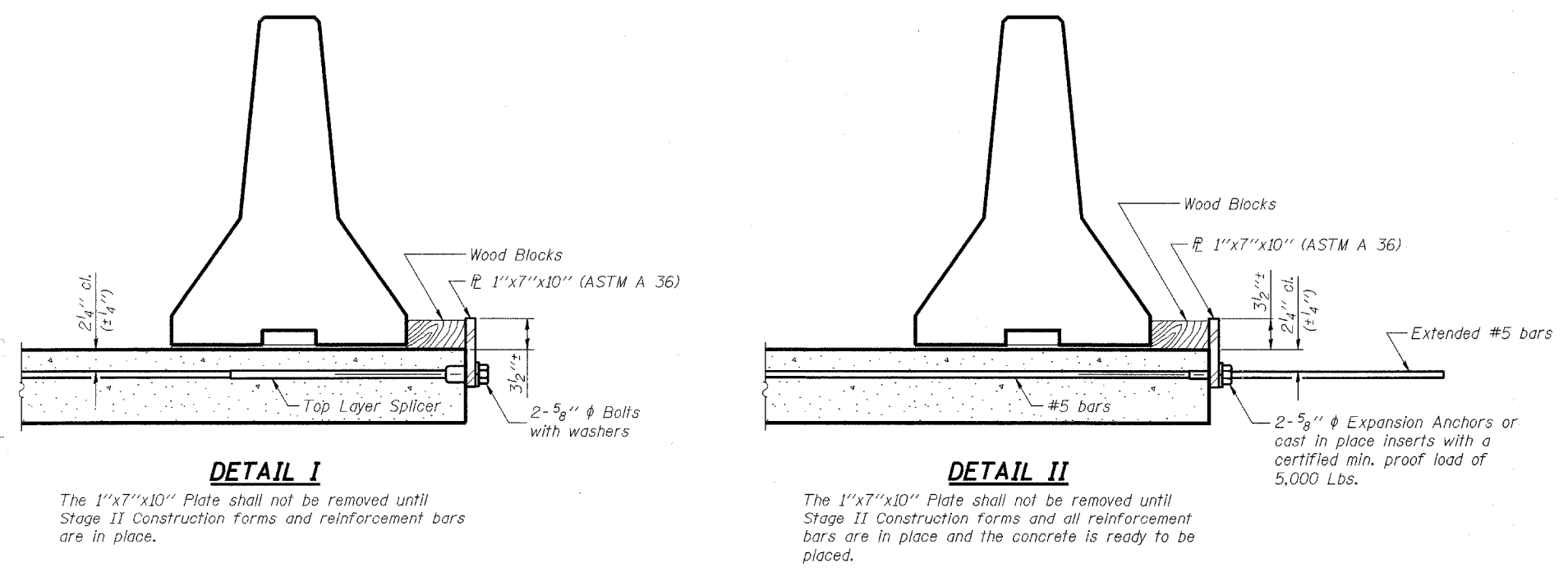


When "A" is 3'-6" or less, the temporary concrete barrier shall be Anchored to the new slab according to Detail I or Detail II. No anchorage is required when "A" is greater than 3'-6".

**NOTES**

- Detail I - With Bar Splicer or Couplers:  
Connect one (1) 1"x7"x10" steel PL to the top layer of couplers with 2-5/8" φ bolts screwed to coupler at approximate C of each barrier panel.
  - Detail II - With Extended Reinforcement Bars:  
Connect one (1) 1"x7"x10" steel PL to the concrete slab with 2-5/8" φ Expansion Anchors or cast in place inserts spaced between the top layer of reinforcement at approximate C of each barrier panel.
- Cost of anchorage is included with Temporary Concrete Barrier.

**SECTIONS THRU SLAB**



**PL 1"x7"x10"**

\* Required only with Detail II

DESIGNED	RFS	20
CHECKED	LLP	EXAMINED
DRAWN	JPG	PASSED
CHECKED	RFS	ENGINEER OF BRIDGES AND STRUCTURES

**TEMPORARY CONCRETE BARRIER  
FOR STAGE CONSTRUCTION  
U.S. ROUTE 14  
(NORTHWEST HIGHWAY)  
OVER LAWRENCE CREEK  
FAP 066 SECTION 21(B&G)R  
McHENRY COUNTY  
STATION 110+00.00  
STRUCTURE NO. 056-0074**