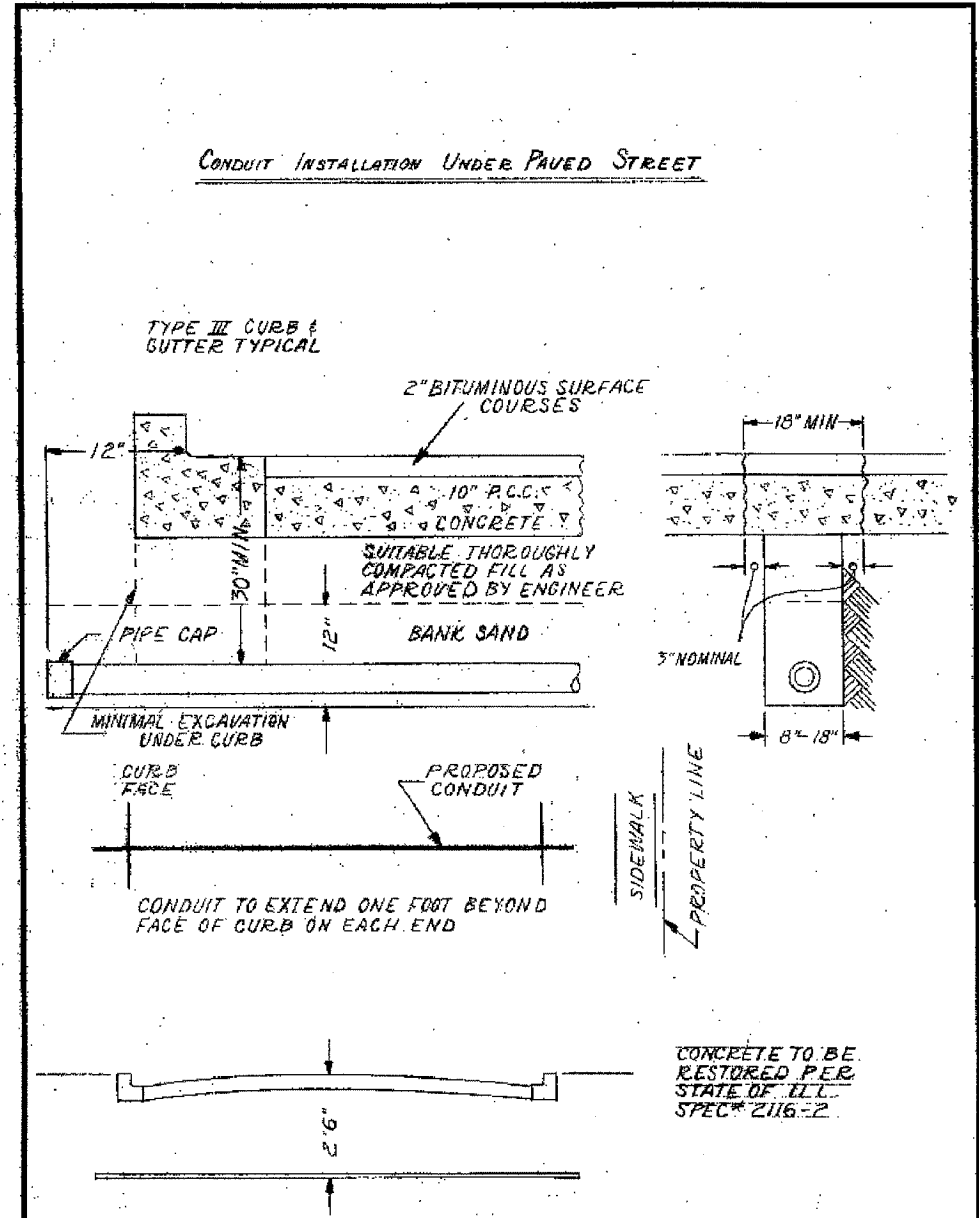
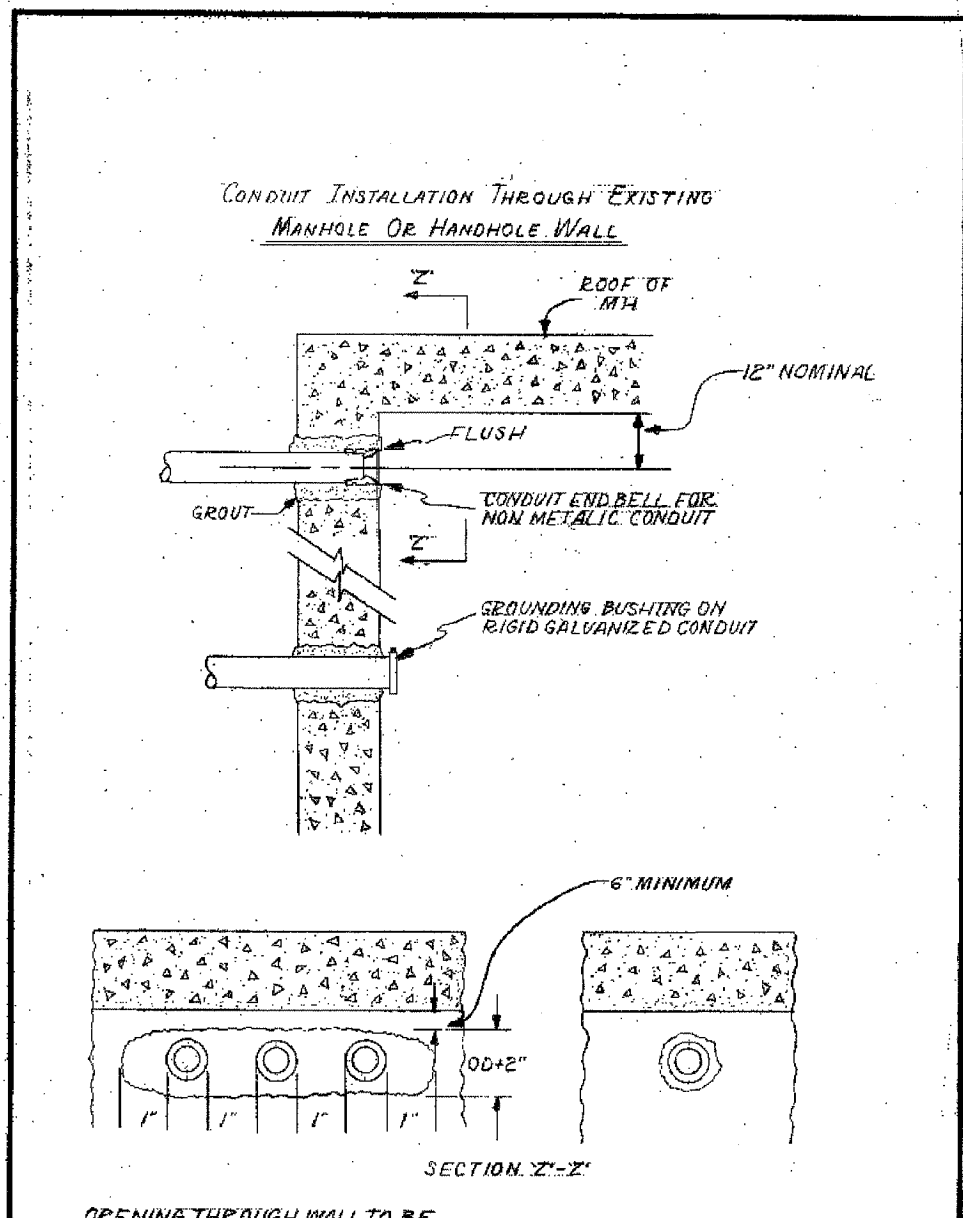


F.A.I. RTE.	SECTION	COUNTY	TOTAL SHEETS	SHEET NO.
90/94	2004-067L	COOK	35	30
STA.	TO STA.			
FED. ROAD DIST. NO. 1	ILLINOIS	FED. AID PROJECT		
62806				



INSTALLATION METHOD OF INSTALLING CONDUIT UNDER PAVED ROADWAY		
CITY OF CHICAGO DEPT. OF STREETS AND SANITATION BUREAU OF ELECTRICITY DIVISION OF ELECTRICAL ENGINEERING		
DRAWN A.M. JOHNSON	CHECKED R. SYCKOWSKI	ENGINEER R.L. MARTIN
<i>Thomas Wilder</i> ENGINEER OF ELECTRICITY		813
<i>Charles E. Bentley</i> 8 1/2" X 14"		



OPENING THROUGH WALL TO BE KEPT TO MINIMUM SIZE TO ADMIT CONDUIT AND SUFFICIENT GROUT TO ASSURE SEALING WALL.

INSTALLATION METHOD OF INSTALLING CONDUIT THRU MANHOLE WALL		
CITY OF CHICAGO DEPT. OF STREETS AND SANITATION BUREAU OF ELECTRICITY DIVISION OF ELECTRICAL ENGINEERING		
DRAWN A.M. JOHNSON	CHECKED R. SYCKOWSKI	ENGINEER R.L. MARTIN
<i>Thomas Wilder</i> ENGINEER OF ELECTRICITY		814
<i>Charles E. Bentley</i> 8 1/2" X 14"		

**CTE ENGINEERS**  
CONSER TOWNSEND ENVIRODYNE ENGINEERS, INC.  
303 EAST WACKER DRIVE, SUITE 600  
CHICAGO, ILLINOIS 60601-5222, PHONE: (312) 938-0300

REVISIONS	
NAME	DATE

ILLINOIS DEPARTMENT OF TRANSPORTATION  
F.A.I. 90/94 (DAN RYAN EXPRESSWAY)  
59th ST TO 47th ST (FRONTAGE ROAD)  
CITY OF CHICAGO LIGHTING CONDUIT & FOUNDATIONS  
WELLS STREET

BOE STANDARD DETAILS

SCALE: NONE  
DATE: February 11, 2005

DRAWN BY: HAR  
CHECKED BY: WDS

BOE-2

02/02/2005 09:02:33 AM \\citech\nt\p40488\p40488elec\N4-cntr\9-sm\contract\9012-b06090\20020202.dwg