

62890

F.A.P. RTE.	SECTION	COUNTY	TOTAL SHEETS	SHEET NO.
1238	2004-125 TS	LAKE	18	1
D-91-086-05				

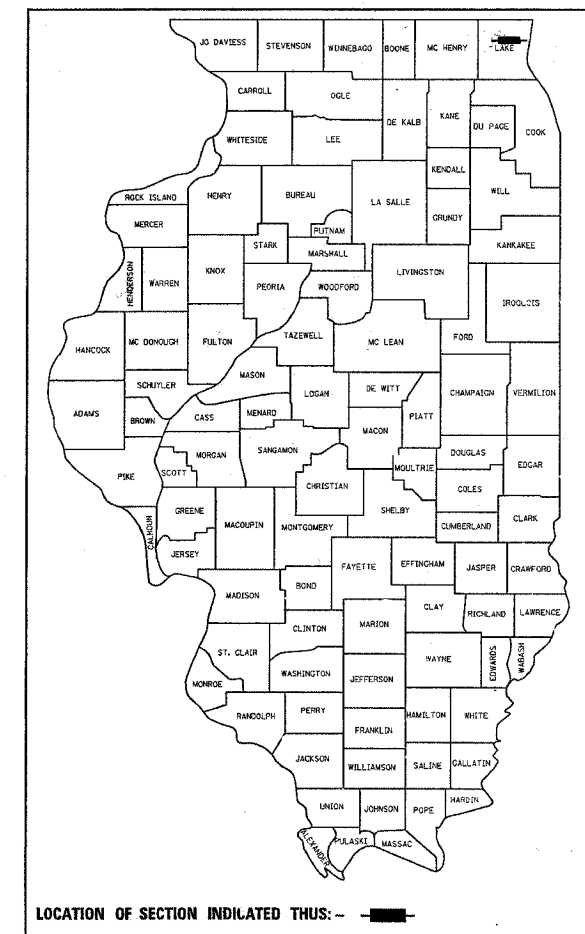
INDEX OF SHEETS

1. TITLE SHEET
2. SUMMARY OF QUANTITIES
- 3-6. STANDARD TRAFFIC SIGNAL DESIGN DETAILS
7. TRAFFIC SIGNAL MODIFICATION PLAN - IL. RTE. 176 AT BRADLEY RD.
8. CABLE PLAN, PHASE DESIGNATION DIAGRAM, EMERGENCY VEHICLE PREEMPTION SEQUENCE AND SCHEDULE OF QUANTITIES - IL. RTE. 176 AT BRADLEY RD.
9. TRAFFIC SIGNAL MODIFICATION PLAN - IL. RTE. 176 AT EAST OF I-94 RAMP/ LAMBS FARM ENTRANCE
10. CABLE PLAN, PHASE DESIGNATION DIAGRAM, EMERGENCY VEHICLE PREEMPTION SEQUENCE AND SCHEDULE OF QUANTITIES - IL. RTE. 176 AT EAST OF I-94 RAMP/LAMP FARM ENTRANCE
11. TRAFFIC SIGNAL MODIFICATION PLAN - IL. RTE. 176 WEST OF I-94 RAMP
12. CABLE PLAN, PHASE DESIGNATION DIAGRAM, EMERGENCY VEHICLE PREEMPTION SEQUENCE AND SCHEDULE OF QUANTITIES - IL. RTE. 176 AT WEST OF I-94 RAMP
- 13-14. TRAFFIC SIGNAL MODIFICATION PLAN - IL. RTE. 176 AT ST. MARY'S RD.
15. CABLE PLAN, PHASE DESIGNATION DIAGRAM, EMERGENCY VEHICLE PREEMPTION SEQUENCE AND SCHEDULE OF QUANTITIES - IL. RTE. 176 AT ST. MARY'S RD.
- 16-17. INTERCONNECT PLAN - ILL. RTE. 176 FROM ST. MARY'S RD. TO BRADLEY RD.
18. INTERCONNECT SCHEMATIC

STATE OF ILLINOIS
DEPARTMENT OF TRANSPORTATION

DIVISION OF HIGHWAYS
**PLANS FOR PROPOSED
FEDERAL AID HIGHWAY**

DISTRICT 1
**CONGESTION MITIGATION AIR QUALITY
FIBER OPTIC COMMUNICATIONS NETWORK
FAU ROUTE 1238/ILL. ROUTE 176 (PARK AVE.)
FROM ST. MARY'S ROAD TO BRADLEY ROAD
SECTION 2004-125 TS
LAKE COUNTY
C-91-086-05**



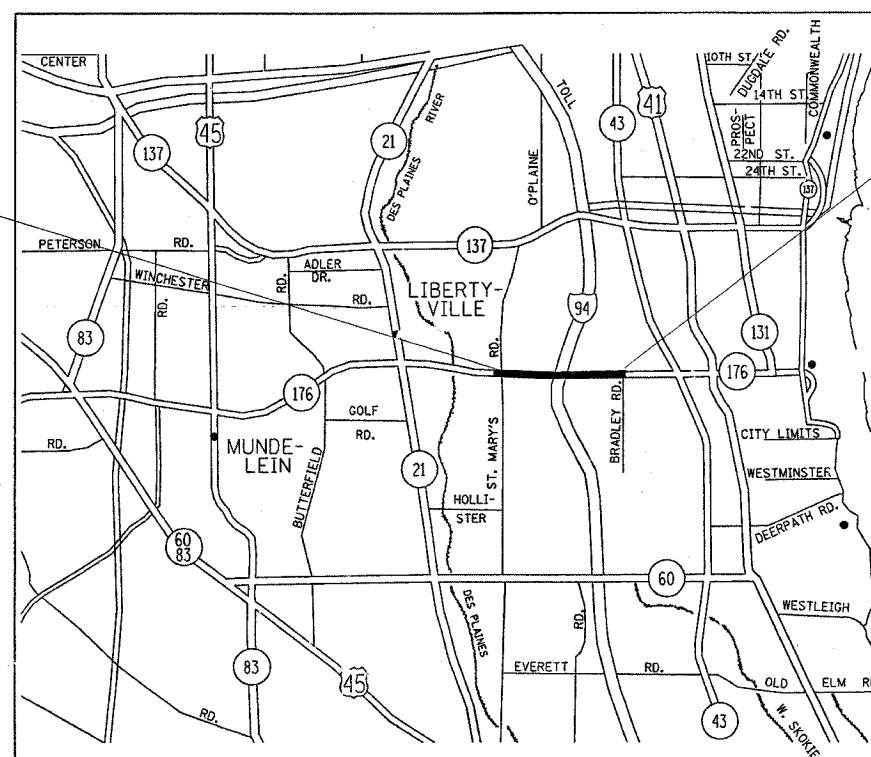
STANDARDS

701006-02	702001-05	880006	701801-03
701011-01	424001-04	701501-03	
701101-01	814001	701606-04	
701301-02	857001	701701-04	

IMPROVEMENT LOCATED IN THE VILLAGE OF LIBERTYVILLE, ILLINOIS

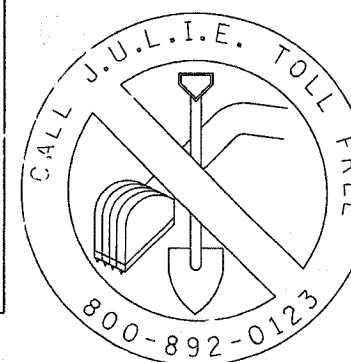
PROJECT BEGINS

PROJECT ENDS



LENGTH OF IMPROVEMENT = 1.2 MI
LIBERTYVILLE TOWNSHIP
LOCATION MAP

SCALE PLAN 1" = 20'
INTERCONNECT 1" = 50'



48 - HOURS BEFORE DIGGING

STATE OF ILLINOIS
DEPARTMENT OF TRANSPORTATION
DIVISION OF HIGHWAYS

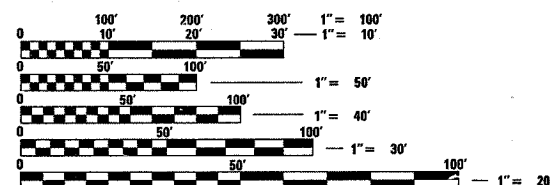
SUBMITTED March 4 2005
James M. O'Keefe, Jr.
DEPUTY DIRECTOR OF HIGHWAYS, REGION ENGINEER

May 13 2005
Mike Hines
ENGINEER OF DESIGN AND ENVIRONMENT

May 13 2005
Victor Modesto
DIRECTOR OF HIGHWAYS, CHIEF ENGINEER

PRINTED BY AUTHORITY OF THE STATE OF ILLINOIS

BUREAU OF TRAFFIC: TERRY RAMMACHIER / DARYLE DREW (847) 705-4420



FULL SIZE PLANS HAVE BEEN PREPARED USING STANDARD ENGINEERING SCALES. REDUCED SIZED PLANS WILL NOT CONFORM TO STANDARD SCALES. IN MAKING MEASUREMENTS ON REDUCED PLANS, THE ABOVE SCALES MAY BE USED.

PREPARED BY: Terry Rammacher 3/4/05
TRAFFIC ENGINEER DATE

CONTRACT NO. 62890

Rev. 5-26-05