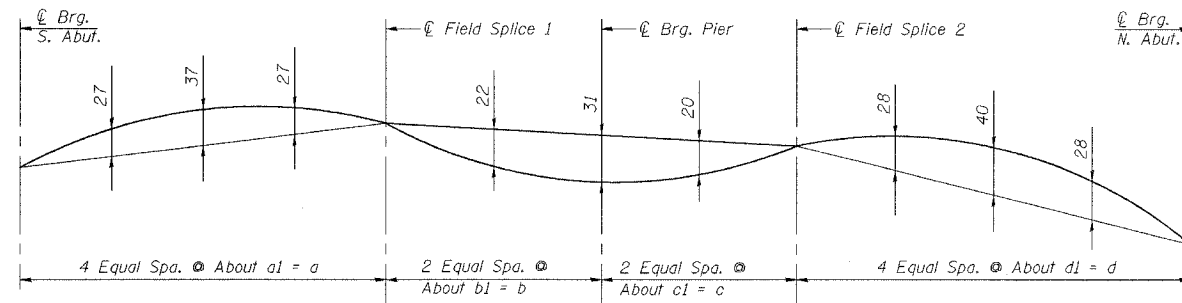


STATE OF ILLINOIS
DEPARTMENT OF TRANSPORTATION

ROUTE No.	SECTION	COUNTY	TOTAL SHEETS	SHEET NO.	SHEET NO. 17
F. A. I. 80/94	*	COOK	90	13	29 SHEETS
FED. ROAD DIST. NO. 1	ILLINOIS	FED. AID PROJECT-	CONTRACT NO. 62898		



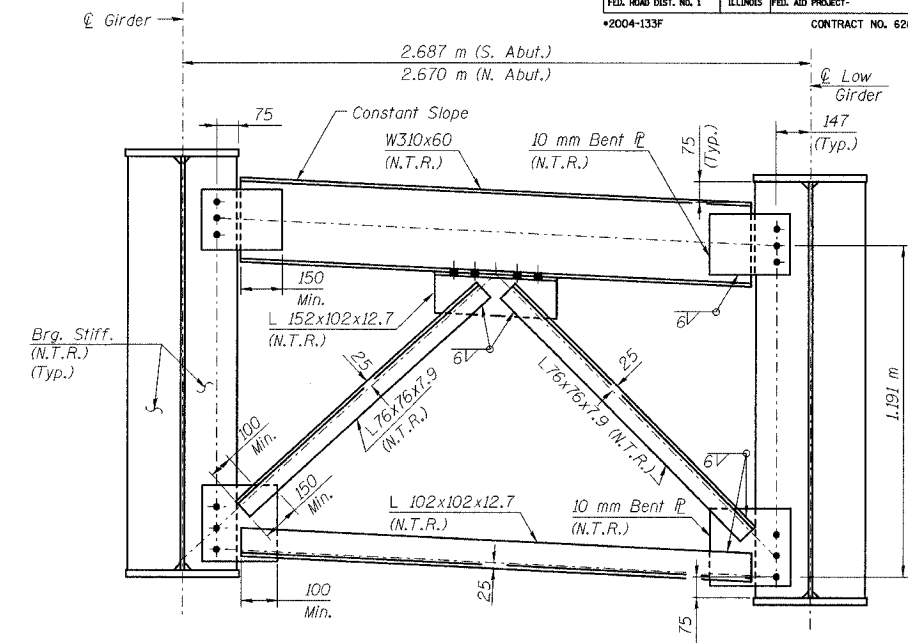
CAMBER DIAGRAM
(For dimensions a, b, c, and d, see Sheet No. 15 of 29).

GIRDER DIMENSIONS (Meters)

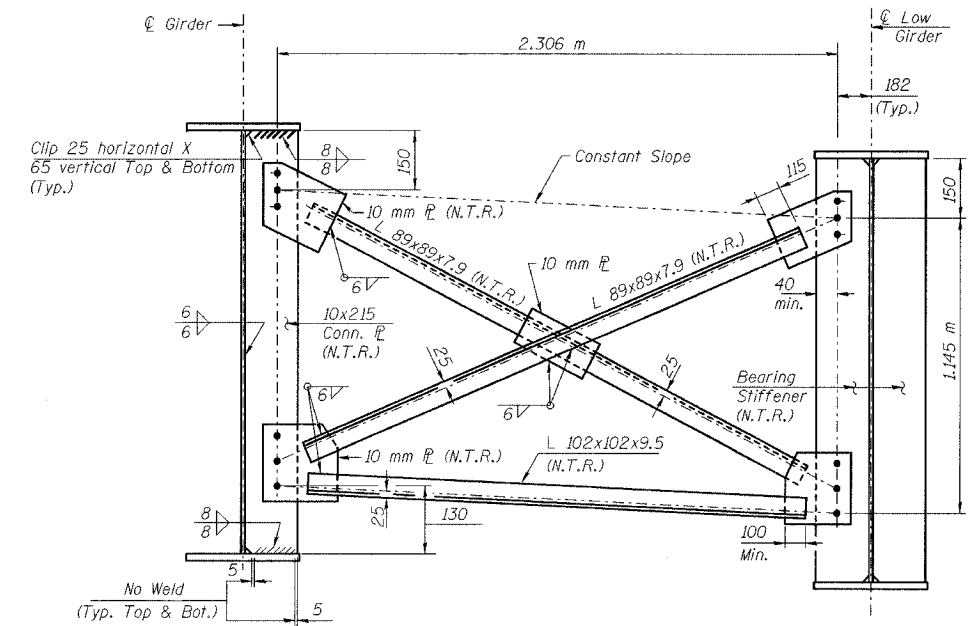
Girder	a1	b1	c1	d1
1	6.927	5.938	5.993	6.992
2	6.927	5.937	5.993	6.992
3	6.927	5.937	5.993	6.992
4	6.927	5.937	5.993	6.992
5	6.926	5.937	5.993	6.992
6	6.926	5.937	5.993	6.992

TOP OF WEB ELEVATIONS FOR FABRICATION (Meters)
(Elevations are before any deflections and are to be used for fabrication only)

Girder	℄ Brg. S. Abut.	℄ F.S. 1	℄ Pier	℄ F.S. 2	℄ Brg. N. Abut.
1	192.848	192.056	191.729	191.409	190.691
2	192.984	192.195	191.869	191.550	190.834
3	193.120	192.333	192.008	191.690	190.978
4	193.256	192.472	192.148	191.831	191.121
5	193.392	192.610	192.288	191.972	191.264
6	193.528	192.749	192.427	192.113	191.408



END CROSS FRAME
(At South Abutment looking South)
(AASHTO M270M Grade 345, N.T.R.)



AT CONNECTION PLATE

AT BEARING STIFFENER

INTERIOR CROSS FRAME
(At Pier and within span looking South)
(AASHTO M270M Grade 345, N.T.R.)

(See Sheet No. 16 of 29 for weld requirements.)

Notes:

- All dimensions are in millimeters (mm) except as noted.
- All cross frame connections to have 28 mm ϕ oversized holes for all M22 H.S. Bolts.
- Two hardened washers shall be required over all oversized holes.
- See Sheet No. 16 of 29 for bearing stiffener details.
- N.T.R. denotes members to which notch toughness requirements are applicable.

DESIGNED	MEA
CHECKED	PY
DRAWN	LK
CHECKED	PY/ACF

I:\kelta EA\34562\CADD\B1\SN_2796\CD\CTR_29_2796.dwg, 12-MAY-2005 15:35

ILLINOIS DEPARTMENT OF TRANSPORTATION
I-94 EAST BOUND / IL 394 SOUTH BOUND
STRUCTURAL STEEL DETAILS
SB ILLINOIS ROUTE 394 OVER INTERSTATE 80
F.A.P. 332 SECTION 2004-133F
COOK COUNTY
STA. 440+193.335 STRUCTURE NO. 016-2796
DATE 05/16/05
SCALE ---

HNTB