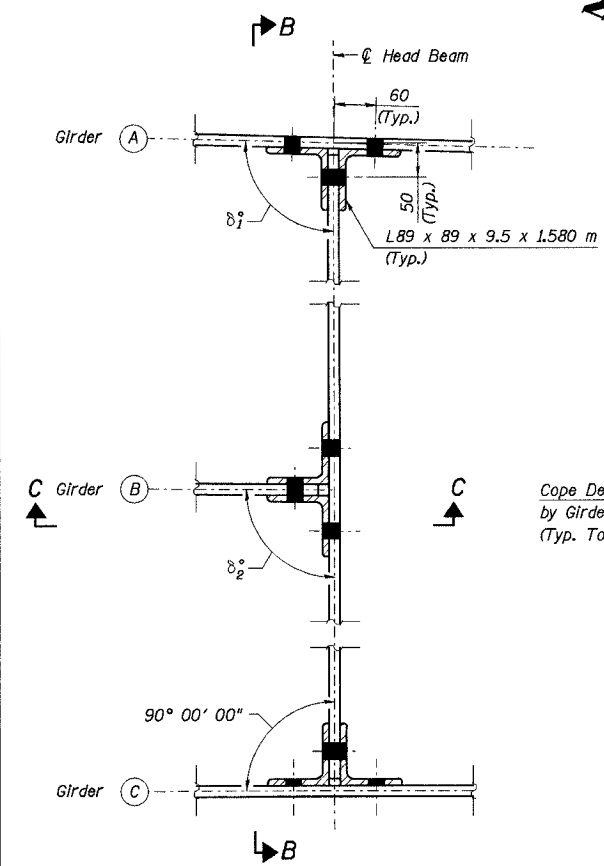


STATE OF ILLINOIS  
DEPARTMENT OF TRANSPORTATION

ROUTE NO.	SECTION	COUNTY	TOTAL SHEETS	SHEET NO.	SHEET NO. 25
F. A. 1.		COOK	90	40	42 SHEETS
FED. ROAD DIST. NO. 1		ILLINOIS FED. AID PROJECT-			
2004-133F		CONTRACT NO. 62898			

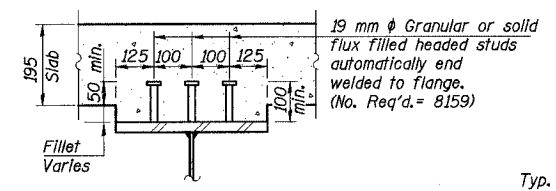


DETAIL A

ANGLE BETWEEN HEAD BEAM AND GIRDERS

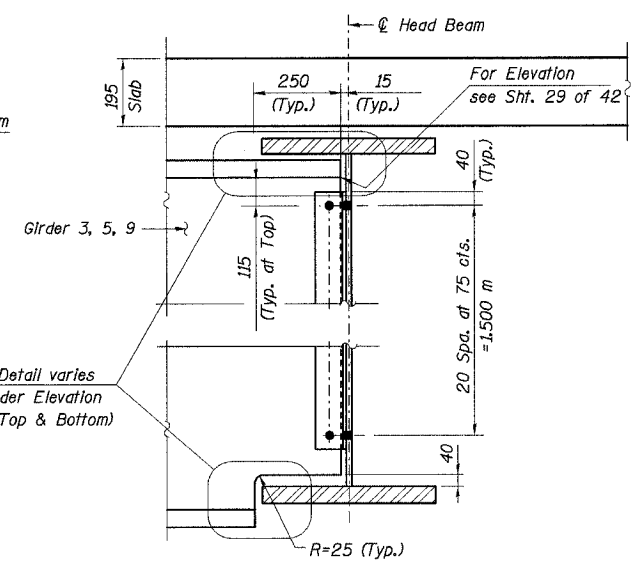
A-B-C	$\delta_1$	$\delta_2$
2-3-4	91° 37' 21"	90° 32' 54"
4-5-6	94° 01' 54"	92° 06' 06"
8-9-10	91° 38' 22"	90° 37' 36"

Angles shown in the table are between  $\phi$  Head Beam and Girder Tangent Line at Intersection of  $\phi$  Girder and  $\phi$  Head Beam.

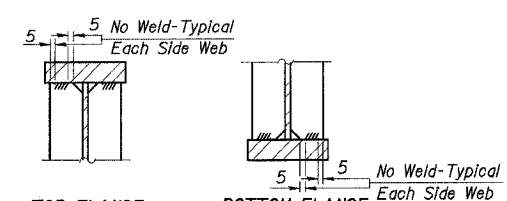


SECTION A-A  
"NOT IN CONTRACT"

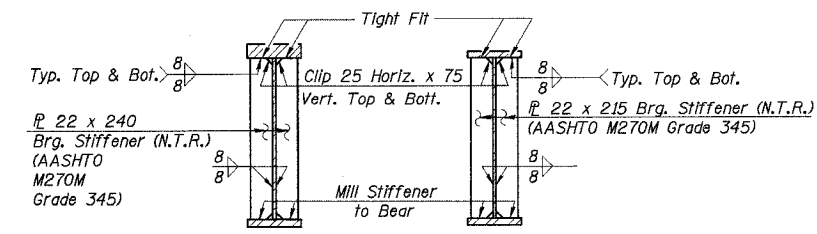
DESIGNED	JY
CHECKED	MEA
DRAWN	LK
CHECKED	MEA



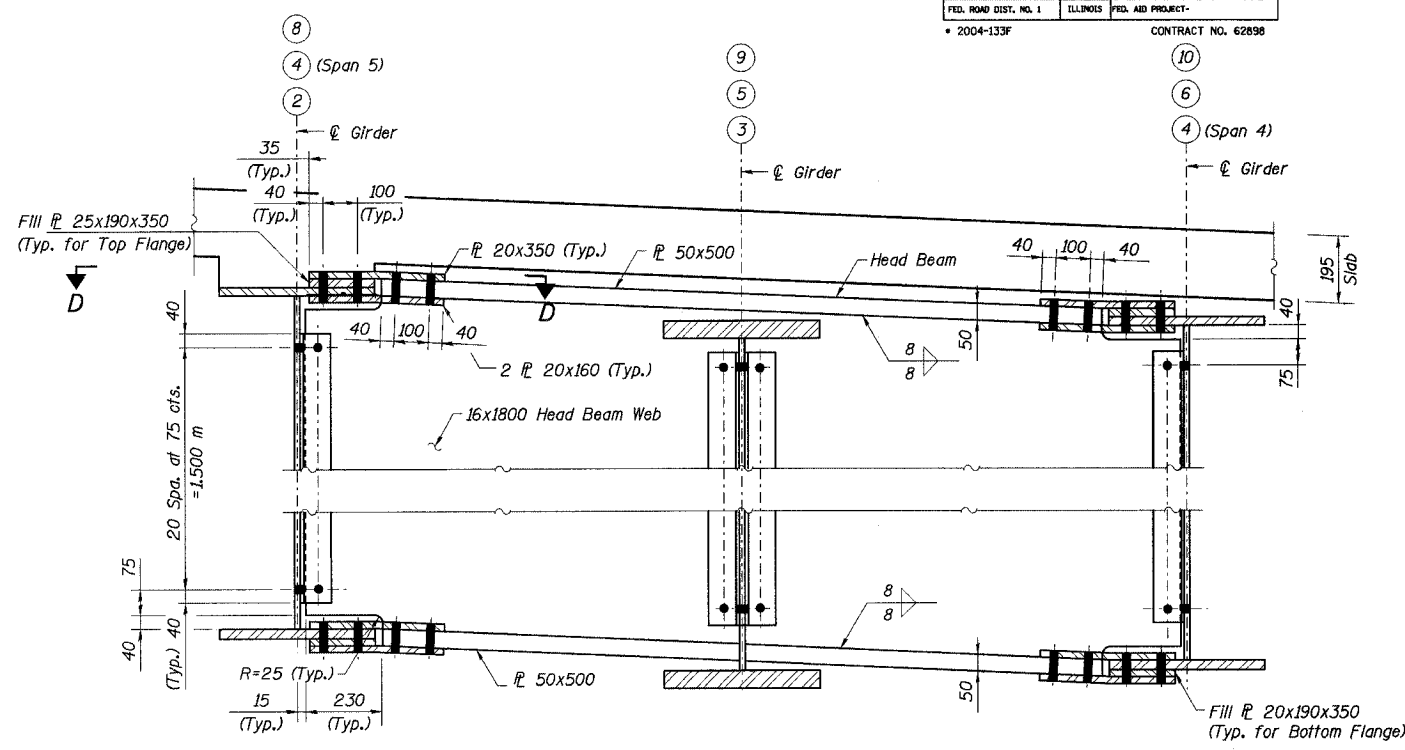
SECTION C-C



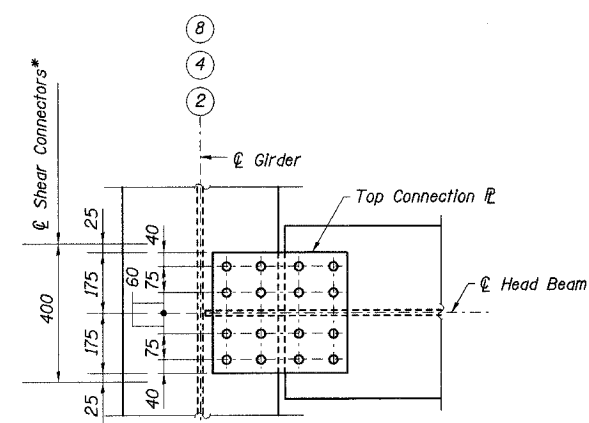
TOP FLANGE BOTTOM FLANGE  
STIFFENER TO FLANGE WELD  
Typical for Bearing Stiffeners



AT PIER 3 & 4 AT N. ABUT. & Pier 2  
BEARING STIFFENERS



SECTION B-B



SECTION D-D

Notes:

- All dimensions are in millimeters (mm) except as noted.
- All Head Beam Connections to have 28 mm  $\phi$  oversized holes for M22 H.S. Bolts. Two hardened washers shall be required over each oversized hole.
- All Head Beams and Connection Angles to be AASHTO M270M, Grade 345 and meet N.T.R.
- N.T.R. denotes plates to which notch toughness requirements are applicable.
- Work this sheet with Sheets Nos. 19-24 & 27 of 42.

ILLINOIS DEPARTMENT OF TRANSPORTATION  
I-94 EAST BOUND / IL 394 SOUTH BOUND  
CONNECTION DETAILS - 1  
SPANS 3-5 - UNIT 1  
SB IL ROUTE 394 OVER THORN CREEK  
F.A.P. 332 SECTION 2004-133F  
COOK COUNTY  
STA. 440+704.350 STRUCTURE NO. 016-2800  
DATE 05/16/05  
SCALE ---  
**HNTB**

L:\kelita\EX34562\CADD\B1\SN\_2800\Cds\CTR\_25\_2800\Fp190194a\_2800.dgn  
16-JUN-2005 10:54