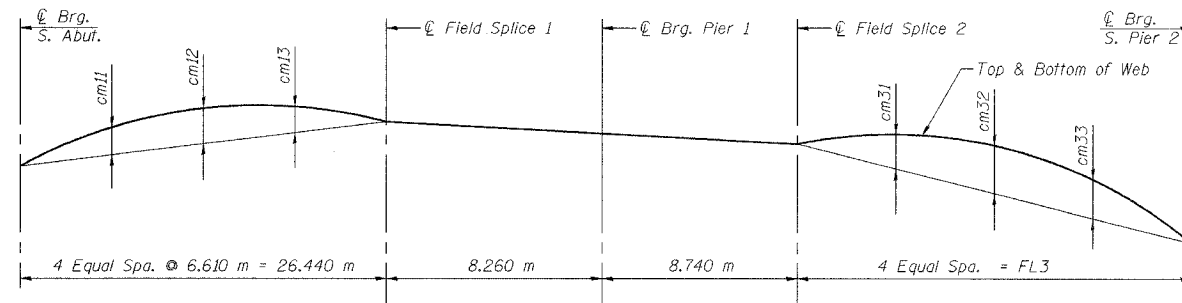


STATE OF ILLINOIS
DEPARTMENT OF TRANSPORTATION

ROUTE NO.	SECTION	COUNTY	TOTAL SHEETS	SHEET NO.	SHEET NO. 33
F. A. I. 80/94		COOK	90	48	42 SHEETS
FED. ROAD DIST. NO. 1		ILLINOIS	FED. AID PROJECT-		CONTRACT NO. 62898
2004-133F					



CAMBER DIAGRAM

CAMBER VALUES

Girder	from \odot Brg. S. Abut. to \odot Sp. 1			from \odot Splice 2. to \odot S. Brg. Pier 2		
	cm11	cm12	cm13	cm31	cm32	cm33
1	15	20	14	31	47	35
2	16	23	15	28	43	31
3	17	24	16	24	35	26
4	17	24	17	22	32	22
5	18	25	17	19	27	19
6	19	25	18	16	21	16

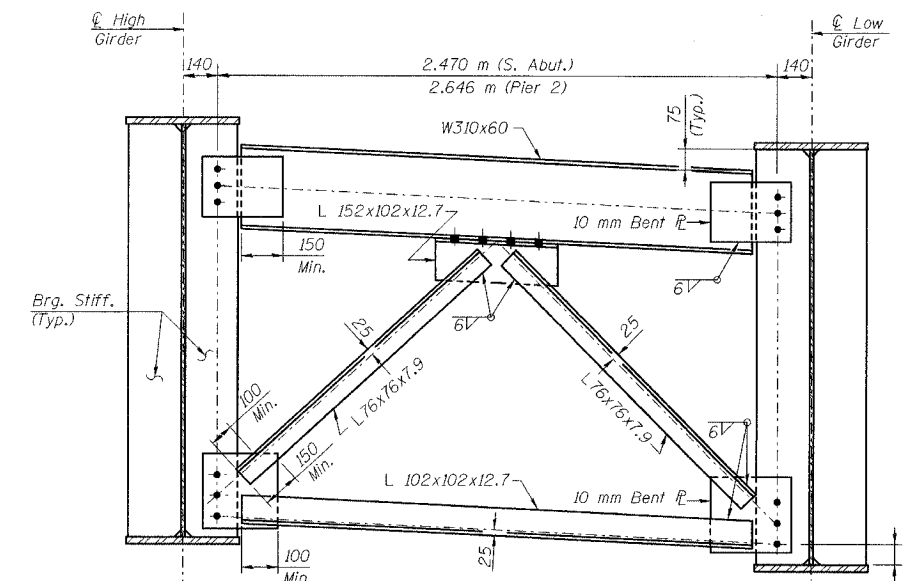
TOP OF WEB ELEVATIONS FOR FABRICATION (Meters)

(Elevations are before any deflections and are to be used for fabrication only)

Girder	\odot Brg. S. Abut.	F.S. 1	Pier 1	F.S. 2	\odot Brg. S. Pier 2
1	186.891	186.868	186.886	186.901	186.938
2	187.024	186.950	186.949	186.944	186.927
3	187.156	187.030	187.012	186.987	186.919
4	187.288	187.112	187.074	187.029	186.916
5	187.420	187.193	187.137	187.071	186.916
6	187.551	187.272	187.200	187.114	186.920

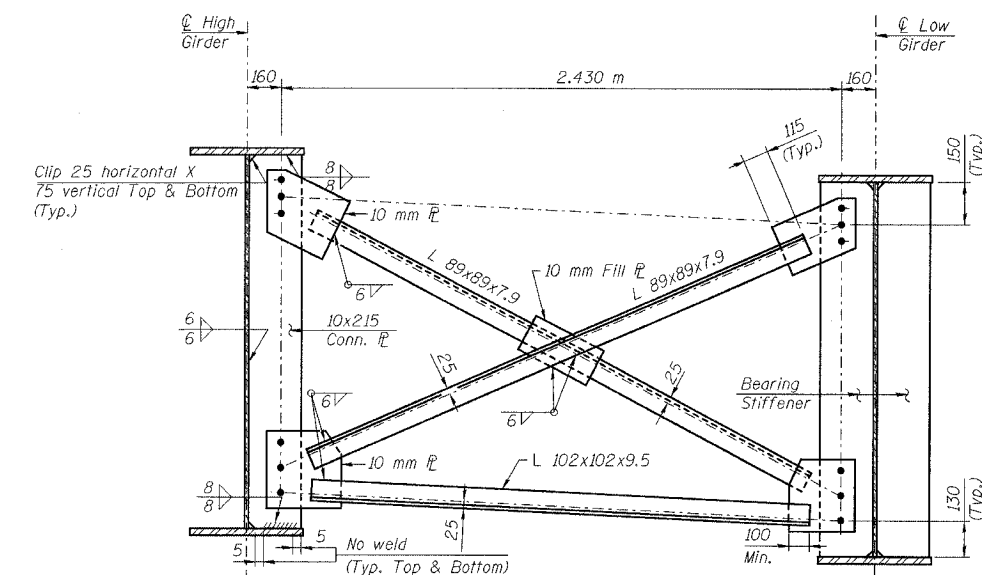
BEARING SEAT ELEVATIONS (Meters)

Girder	\odot Brg. S. Abut.	\odot Pier 1	\odot S. Brg. Pier 2
1	185.273	185.273	185.282
2	185.406	185.336	185.282
3	185.538	185.399	185.282
4	185.670	185.461	185.282
5	185.802	185.524	185.282
6	185.933	185.587	185.282



END CROSS FRAME

(At South Abutment and Pier 2)
(All Materials AASHTO M270M Grade 345, N.T.R.)



AT CONNECTION PLATE

AT BEARING STIFFENER

INTERIOR CROSS FRAME

(At Pier 1 and within span)
(All Materials AASHTO M270M Grade 345, N.T.R. except Fill ϕ)

Notes:

- All dimensions are in millimeters (mm) except as noted.
- All cross frame connections to have 28 mm ϕ oversized holes for all M22 H.S. Bolts.
- Two hardened washers shall be required over each oversized hole.
- See Sheet No. 32 of 42 for bearing stiffener details.
- N.T.R. denotes members to which notch toughness requirements are applicable.
- For Dimensions FL3 see Sht. No. 31 of 42.

DESIGNED	MEA
CHECKED	JY
DRAWN	LK
CHECKED	JY

I:\elito\ex\34562\CADD\N1\SN_2800\cda\CTR_29_2800\cda\90214a_2800.dgn
 13-MAY-2005 09:51

ILLINOIS DEPARTMENT OF TRANSPORTATION
I-94 EAST BOUND / IL 394 SOUTH BOUND
CAMBER, TOP OF WEB ELEVATIONS & CROSS FRAME DETAILS - UNIT 2
SB IL ROUTE 394 OVER THORN CREEK
F.A.P. 332 SECTION 2004-133F
COOK COUNTY
STA. 440+704.350 STRUCTURE NO. 016-2800
DATE 05/16/05
SCALE ---

HNTB