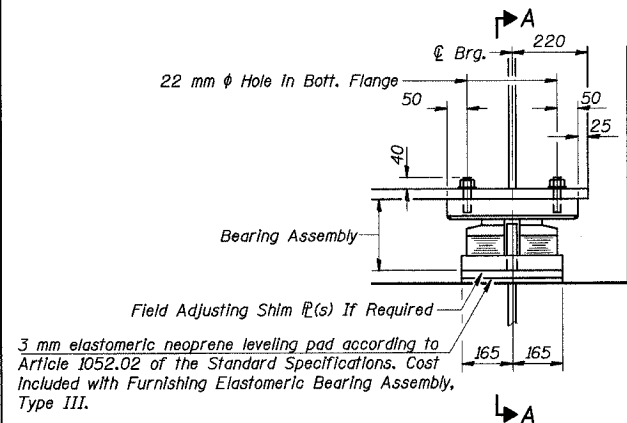
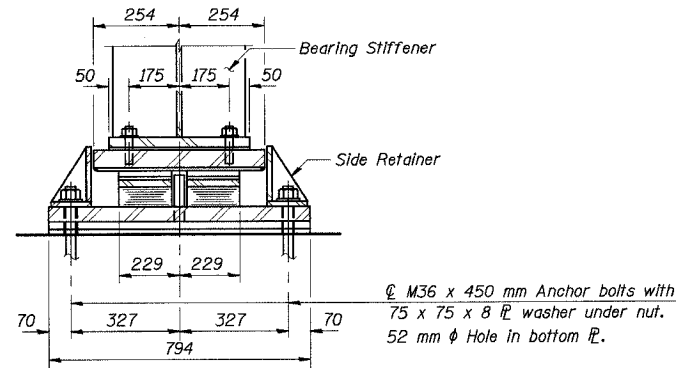


STATE OF ILLINOIS
DEPARTMENT OF TRANSPORTATION

ROUTE NO.	SECTION	COUNTY	TOTAL SHEETS	SHEET NO.	SHEET NO.
F. A. I. 80/94	*	COOK	90	53	42 SHEETS
FED. ROAD DIST. NO. 1		ILLINOIS FED. AID PROJECT-		CONTRACT NO. 62898	



ELEVATION AT N. ABUT.
(Looking West)



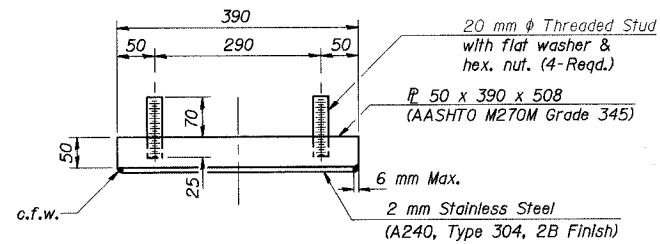
SECTION A-A

3 mm elastomeric neoprene leveling pad according to Article 1052.02 of the Standard Specifications. Cost included with Furnishing Elastomeric Bearing Assembly, Type III.

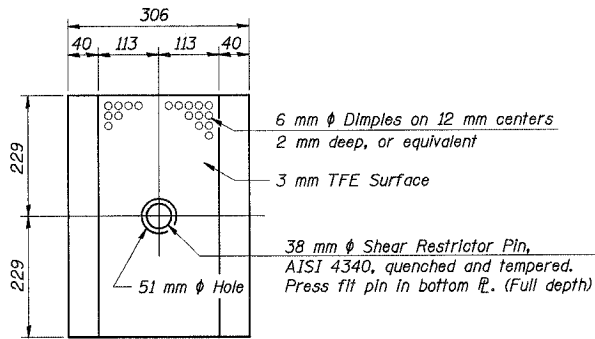
ϕ M36 x 450 mm Anchor bolts with 75 x 75 x 8 flange washer under nut. 52 mm ϕ Hole in bottom flange.

TYPE III ELASTOMERIC EXP. BRG.
(N. Abut.)

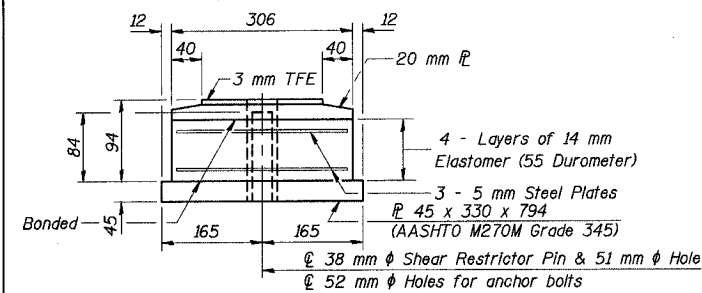
Notes: See sheet No. 42 of 42 for Anchor Bolt Installation. All dimensions are in millimeters (mm) except as noted.



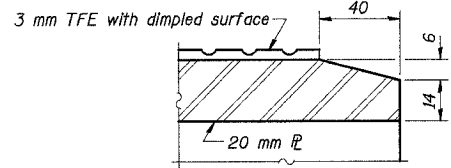
TOP BEARING ASSEMBLY



PLAN-TFE ELASTOMERIC BRG.

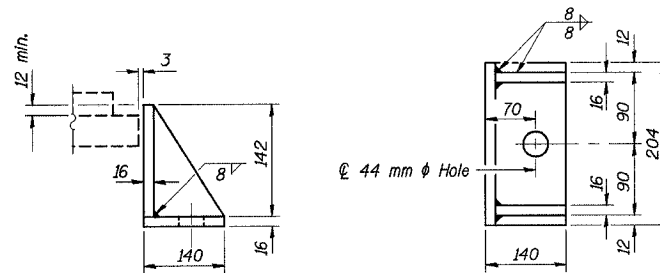


BOTTOM BEARING ASSEMBLY



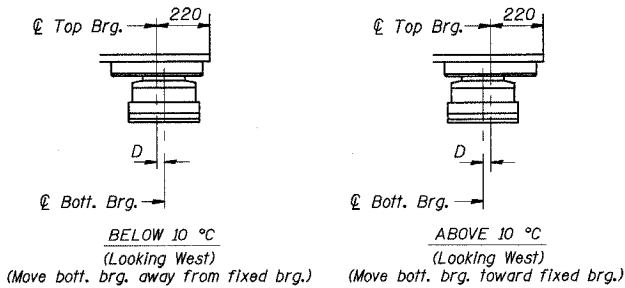
SECTION THRU TFE

Notes: The 3 mm TFE sheet shall be bonded directly to the top steel plate with a two-component, medium viscosity epoxy resin, conforming to the requirements of the Federal Specification MMM-A-134, Type I. The bond agent shall be applied on the full area of the contact surfaces. Bonding of 3 mm TFE sheet during vulcanizing process will be permitted provided the process and method of adjusting assembly height is approved by the Engineer. All dimensions are in millimeters (mm) except as noted.



SIDE RETAINER

Equivalent rolled angle with stiffeners will be allowed in lieu of welded plates. Mass included with Furnishing Structural Steel.



TYPE III ELASTOMERIC EXP. BRG. LOCATIONS

Unit	Location	No. of Brgs. Req'd
1	N. Abut.	9

SETTING ANCHOR BOLTS AT EXP. BRG.

D = 1 mm per each 10 m of expansion for every 8 °C temp. change from the normal temp. of 10 °C.

DESIGNED	TRL
CHECKED	JJK
DRAWN	LK
CHECKED	JJK

L:\Kellie\EA34562\4000\151\SN_2800\cde\CTR_29_2800\br190244e-2800.dgn
16-JUN-2005 10:54

BILL OF MATERIAL

Item	Unit	Quantity
Furnishing Elastomeric Bearing Assembly, Type III	Each	9

ILLINOIS DEPARTMENT OF TRANSPORTATION
I-94 EAST BOUND / IL 394 SOUTH BOUND
ELASTOMERIC EXPANSION BEARINGS TYPE III
SB IL ROUTE 394 OVER THORN CREEK
F.A.P. 332 SECTION 2004-133F
COOK COUNTY
STA. 440+704.350 STRUCTURE NO. 016-2800
DATE 05/16/05
SCALE ---

HNTB