

STATE OF ILLINOIS
DEPARTMENT OF TRANSPORTATION

ROUTE NO.	SECTION	COUNTY	TOTAL SHEETS	SHEET NO.	SHEET NO. 3
F. A. I. 80/94	.	COOK	90	60	21 SHEETS
FED. ROAD DIST. NO. 1	ILLINOIS	FED. AID PROJECT-			
2004-133F		CONTRACT NO. 62898			

CURVE DATA
CL94EB-1

PI STA. = 20+452.899
 $\Delta = 51^{\circ}-16'-46''$
 $D = 10^{\circ}-13'-53''$
 $R = 560.000$ m
 $T = 268.785$ m
 $L = 501.197$ m
 $E = 61.164$ m
 $S.E. = 6.0\%$
 PC STA. = 20+184.114
 PT STA. = 20+685.312
 S.E. IN = STA. 20+148 to STA. 20+206
 S.E. OUT = STA. 20+664 to STA. 20+712

CURVE DATA
BL394NB-1

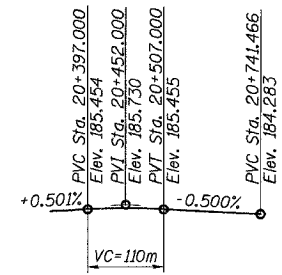
PI STA. = 40+402.644
 $\Delta = 38^{\circ}-44'-03''$
 $D = 5^{\circ}-43'-47''$
 $R = 1,000.000$ m
 $T = 351.510$ m
 $L = 676.039$ m
 $E = 59.981$ m
 $S.E. = 4.8\%$
 PC STA. = 40+051.134
 PT STA. = 40+727.173
 S.E. IN = STA. 40+000 to STA. 40+081
 S.E. OUT = STA. 40+708 to STA. 40+821

CURVE DATA
BLRAMPJ-1

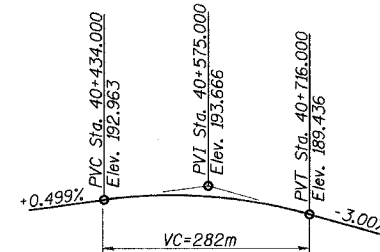
PI STA. = 140+553.29
 $\Delta = 115^{\circ}-02'-32''$
 $R = 302.000$ m
 $T = 474.431$ m
 $L = 606.376$ m
 $E = 260.395$ m
 PC STA. = 140+078.859
 PT STA. = 140+685.231
 S.E. Transition: 0.02 m/m
 • STA. 140+000 to 0.06 m/m • STA. 140+090
 Full S.E. = 0.06 m/m
 From STA. 140+090 to STA. 140+625

CURVE DATA
BLRAMPJ-2

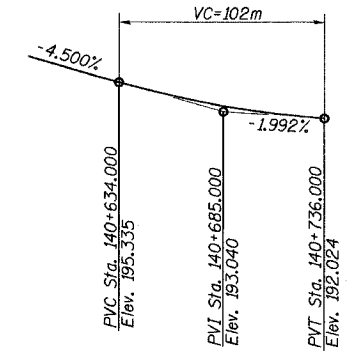
PI STA. = 140+781.248
 $\Delta = 2^{\circ}-38'-11''$
 $R = 2,000.000$ m
 $T = 46.019$ m
 $L = 92.022$ m
 $E = 0.529$ m
 PC STA. = 140+735.229
 PT STA. = 140+827.252
 S.E. Transition: 0.06 m/m
 • STA. 140+625 to 0.00 m/m • STA. 140+707.5
 From 0.0 m/m • Sta 140+707.5 to 0.02 m/m • STA. 140+735
 Constant S.E. 0.02 m/m from STA. 140+735



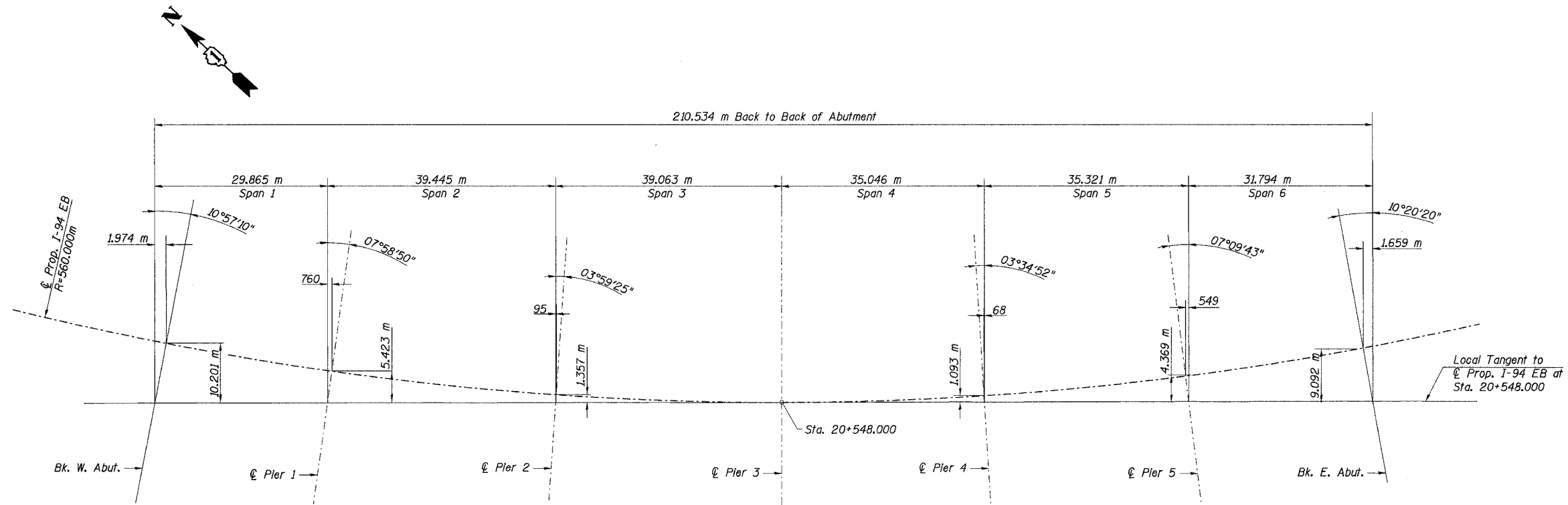
PROPOSED PROFILE GRADE I-94 EB



PROFILE GRADE IL RTE. 394 NB



PROFILE GRADE RAMP J



OFFSET SKETCH

NOTES:

- All dimensions are in millimeters (mm) except as noted.

DESIGNED	JJK
CHECKED	PCA
DRAWN	LK
CHECKED	CJH

I:\projects\2004\133F\133F_2807\cadd\CTR_29_2807\sm190802\o_2807.dgn
 20-1141-2005_1431

ILLINOIS DEPARTMENT OF TRANSPORTATION
 I-94 EAST BOUND / IL 394 SOUTH BOUND
 OFFSET SKETCH, PROFILES
 & CURVE DATA
 EB I-94 OVER THORN CREEK
 F.A.I. 94 SECTION 2004-133F
 COOK COUNTY
 STA. 20+509.000 STRUCTURE NO. 016-2807
 DATE 05/16/05
 SCALE ---
HNTB