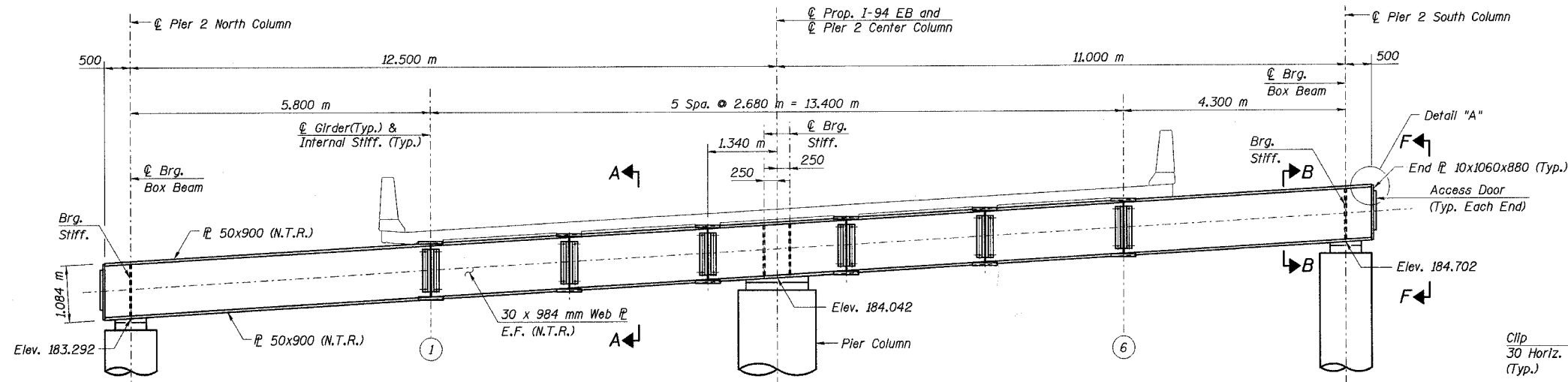
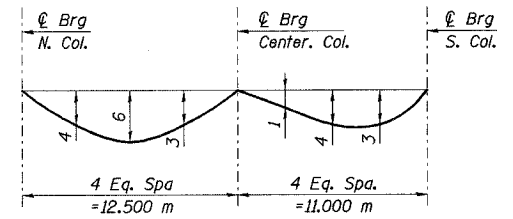


STATE OF ILLINOIS
DEPARTMENT OF TRANSPORTATION

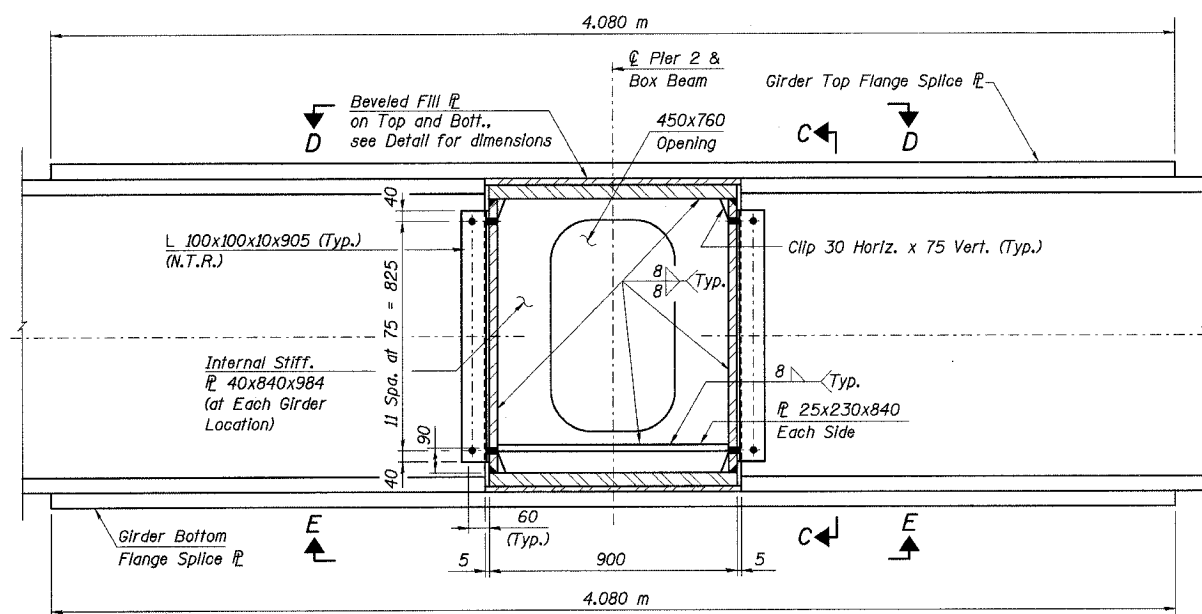
ROUTE NO.	SECTION	COUNTY	TOTAL SHEETS	SHEET NO.	SHEET NO. 16 21 SHEETS
F. A. I. 80/94		COOK	90	73	
FED. ROAD DIST. NO. 1		ILLINOIS FED. AID PROJECT-		CONTRACT NO. 62698	
* 2004-133F					



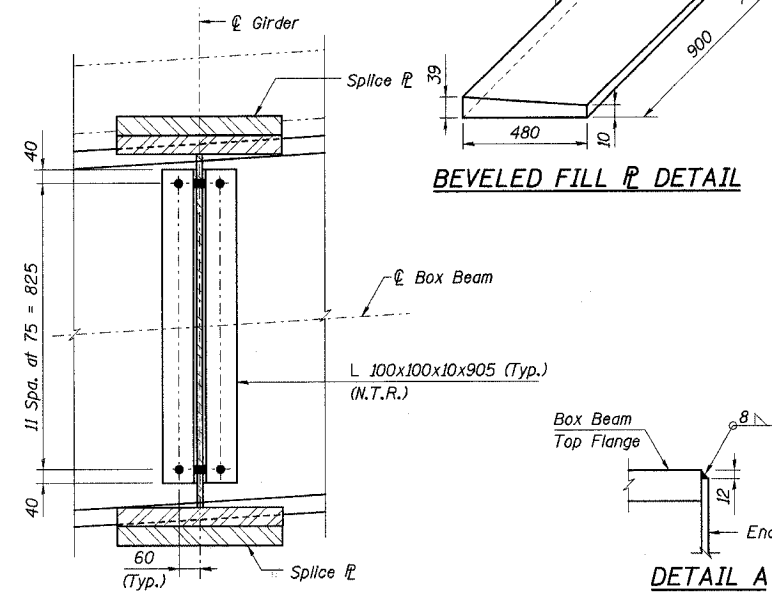
PIER 2 CAP BEAM ELEVATION
(Looking Up Station)



DEAD LOAD DEFLECTION
(Includes weight of slab and parapet)

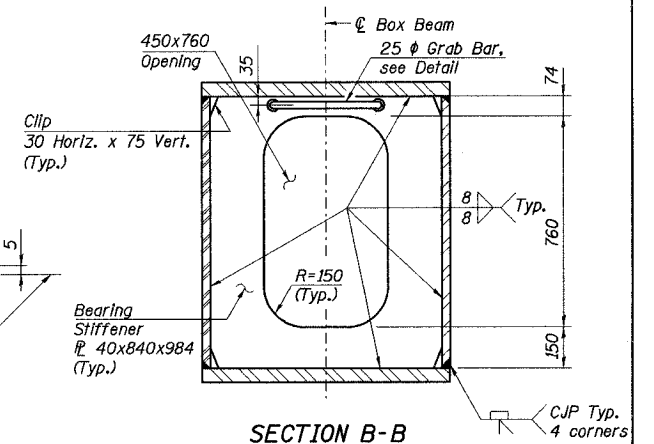


SECTION A-A

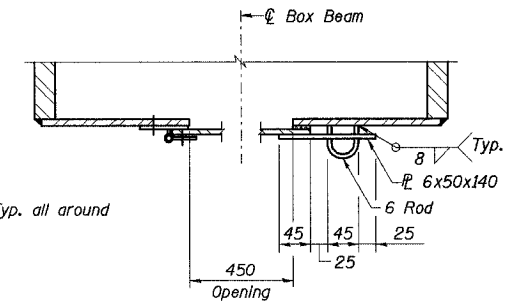


BEVELED FILL PLATE DETAIL

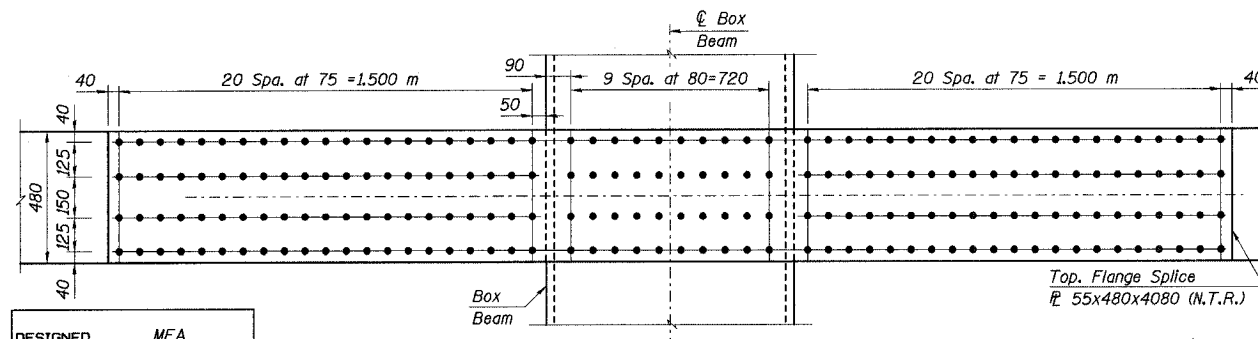
VIEW C-C



SECTION B-B
(Bearing Stiffener Detail)

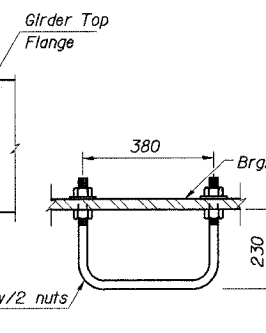


SECTION G-G



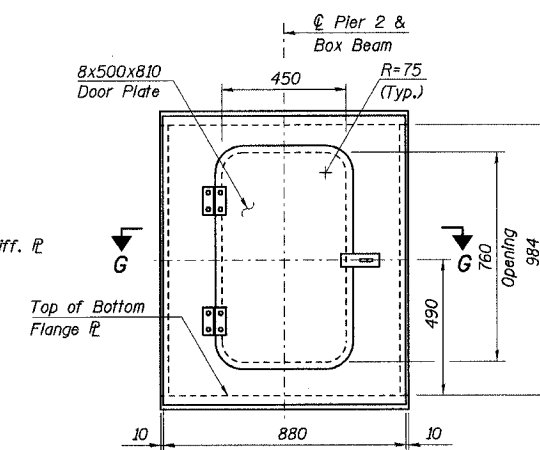
VIEW D-D & E-E

(View D-D (Top view) shown, view E-E (Bottom view) similar)



GRAB BAR DETAIL

1 required at Each Door.
Place Bar to face door



VIEW F-F

- Notes:
1. N.T.R. denotes Plates to which notch toughness requirements are applicable.
 2. All dimensions are in millimeters (mm) except as noted.
 3. Preclude threads in the shear plane of ASTM A325 Bolts.
 4. Contact surface of Splice Plates must satisfy Class B requirements.
 5. All Bolts are 22 mm ASTM A325 H.S. Bolts with 24 mm holes.

ILLINOIS DEPARTMENT OF TRANSPORTATION
I-94 EAST BOUND / IL 394 SOUTH BOUND
PIER 2 CAP BEAM DETAILS
EB I-94 OVER THORN CREEK
F.A.I. 94 SECTION 2004-133F
COOK COUNTY
STA. 20+509.000 STRUCTURE NO. 016-2807
DATE 05/16/05
SCALE ---

HNTB

L:\kaltz\j\34562\CADD\B1\SN_2807\cadd\CTR_29_2807\st190805\4e_2807.dgn
16-JUN-2005 16:39

DESIGNED	MEA
CHECKED	MIL
DRAWN	LK
CHECKED	MIL