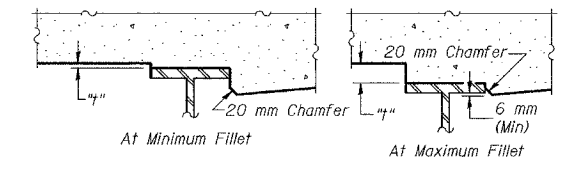
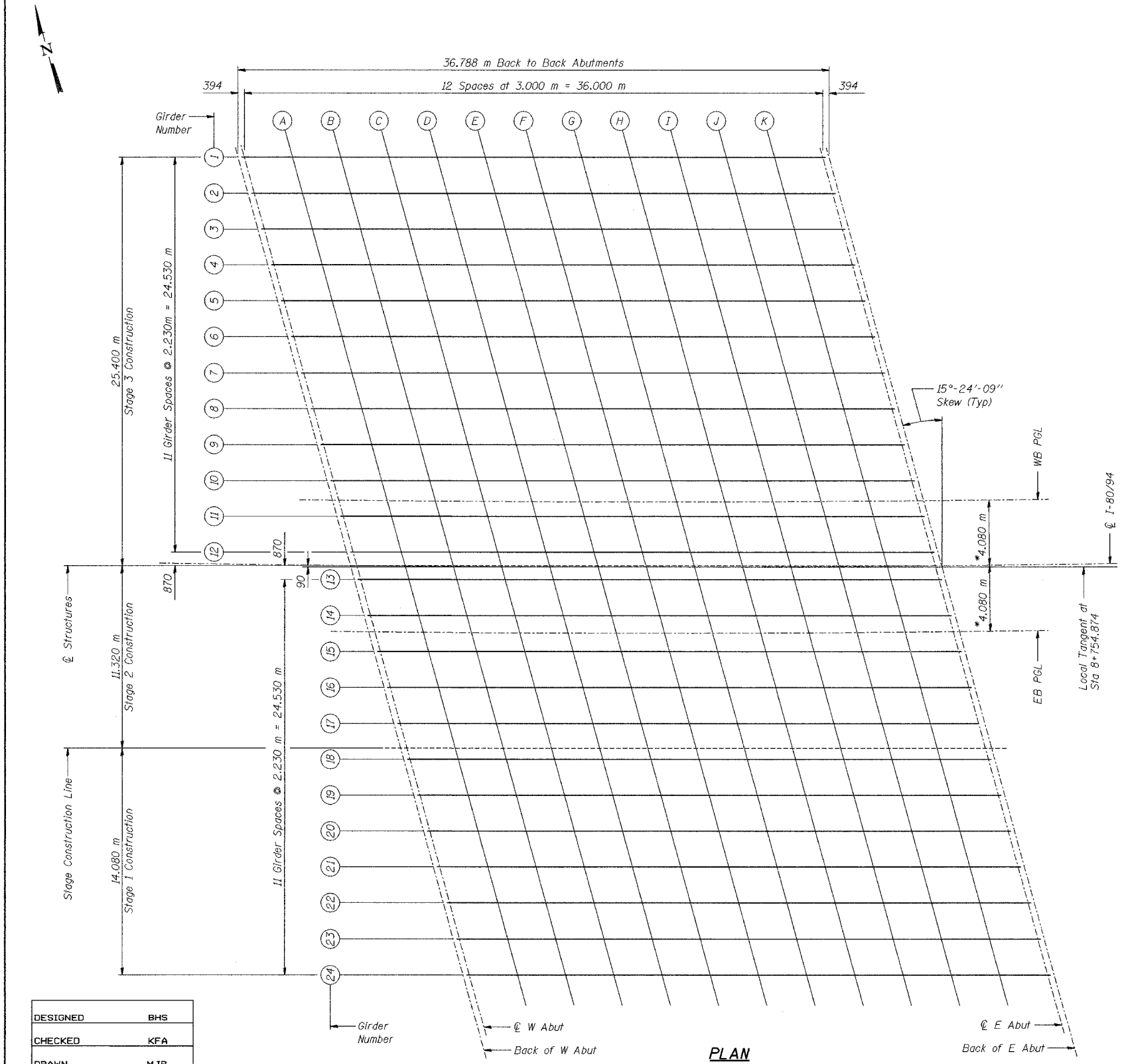


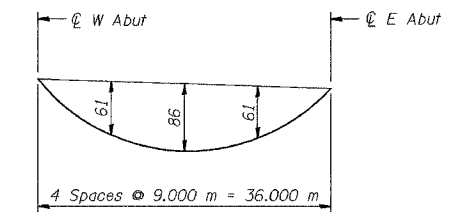
ROUTE NO.	SECTION	COUNTY	TOTAL SHEETS	SHEET NO.	SHEET
F.A.L. 80/94	2004-133F	LAKE COUNTY, INDIANA	90	82	28 SHEETS
BLDG. NO.		FED. AID PROJECT-			

CONTRACT NO. 62898 INDOT DES. NO. 9910630



To determine "f": After all structural steel has been erected, elevations of the top flanges of the beams shall be taken at intervals shown. These elevations subtracted from the "Theoretical Grade Elevations Adjusted for Dead Load Deflection" shown in Tables on Sheet S-7 thru S-10, minus slab thickness, equals the fillet heights "f" above top flange of girders.

FILLET HEIGHTS



DEAD LOAD DEFLECTION DIAGRAM
(Includes weight of concrete only)

NOTE: The above deflections are not to be used in the field if the engineer is working from the grade elevations adjusted for dead load deflections.
All dimensions are in millimeters (mm) except as noted.

NOTES:
* Measured radial to CL I-80/94 .

DESIGNED	BHS
CHECKED	KFA
DRAWN	MJB
CHECKED	GSP

ILLINOIS DEPARTMENT OF TRANSPORTATION
F.A.L. ROUTE 80/94 (BORMAN EXPRESSWAY)
OVER HARRISON AVENUE

TOP OF DECK ELEVATIONS - LAYOUT
SECTION 2004-133F
LAKE COUNTY, INDIANA
STATION 8+754.874
STRUCTURE NO. I-80-1-8461 (EB & WB)
DATE 05/05 (016-1005 & 016-1006)

AMERICAN
CONSULTING ENGINEERS

FOR INFORMATION ONLY