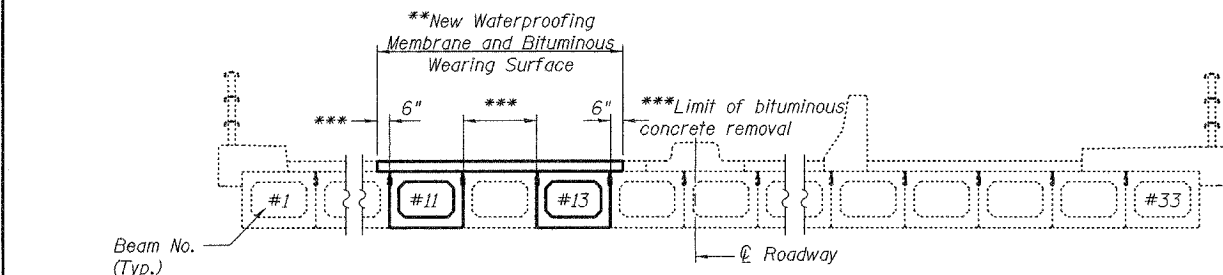


STATE OF ILLINOIS  
DEPARTMENT OF TRANSPORTATION

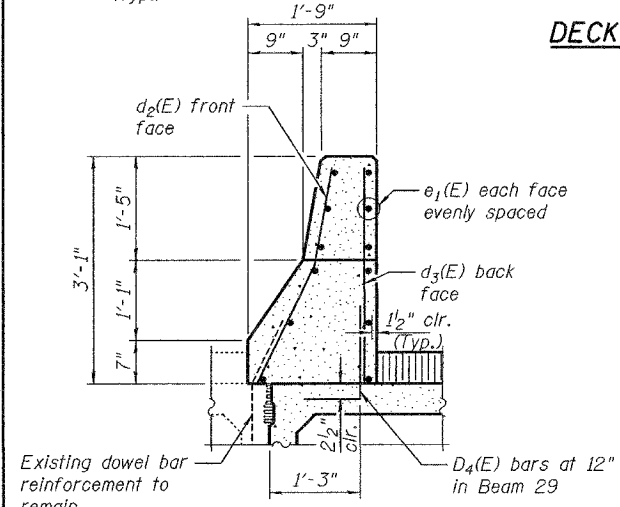
|                        |         |        |           |       |
|------------------------|---------|--------|-----------|-------|
| ROUTE NO.              | SECTION | COUNTY | SHEET NO. | SHEET |
|                        |         | DuPage | 14        | 12    |
| Contract Number: 62912 |         |        |           |       |

SHEET NO. 2  
4 SHEETS



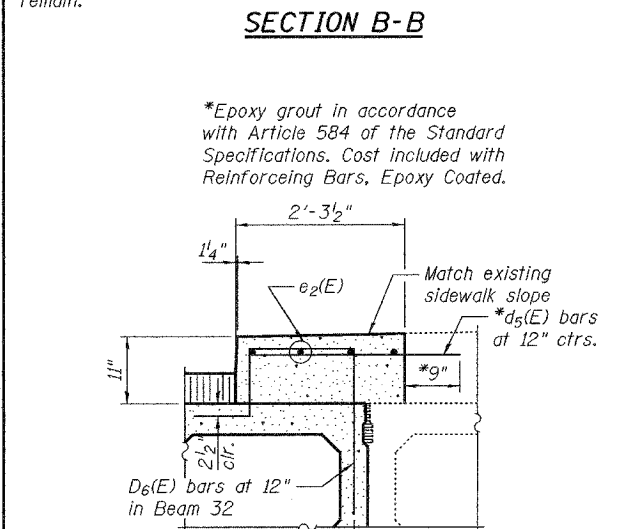
DECK CROSS SECTION  
SPAN #1  
(Looking East)

MIN. BAR LAP  
#5 = 2'-2"

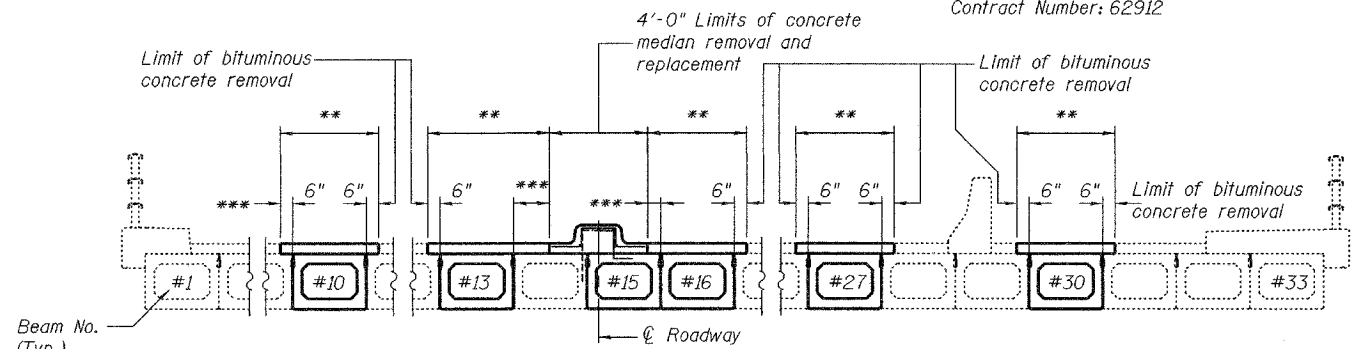


SECTION B-B

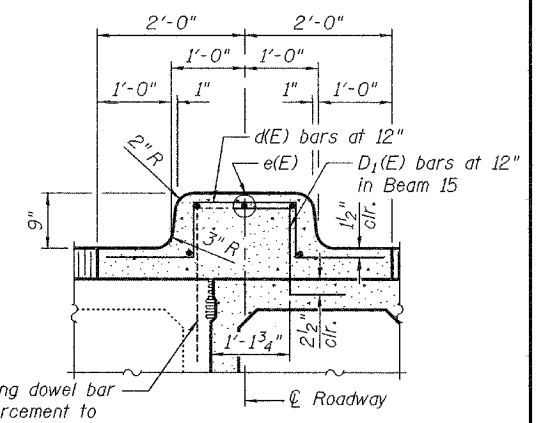
\*Epoxy grout in accordance with Article 584 of the Standard Specifications. Cost included with Reinforcing Bars, Epoxy Coated.



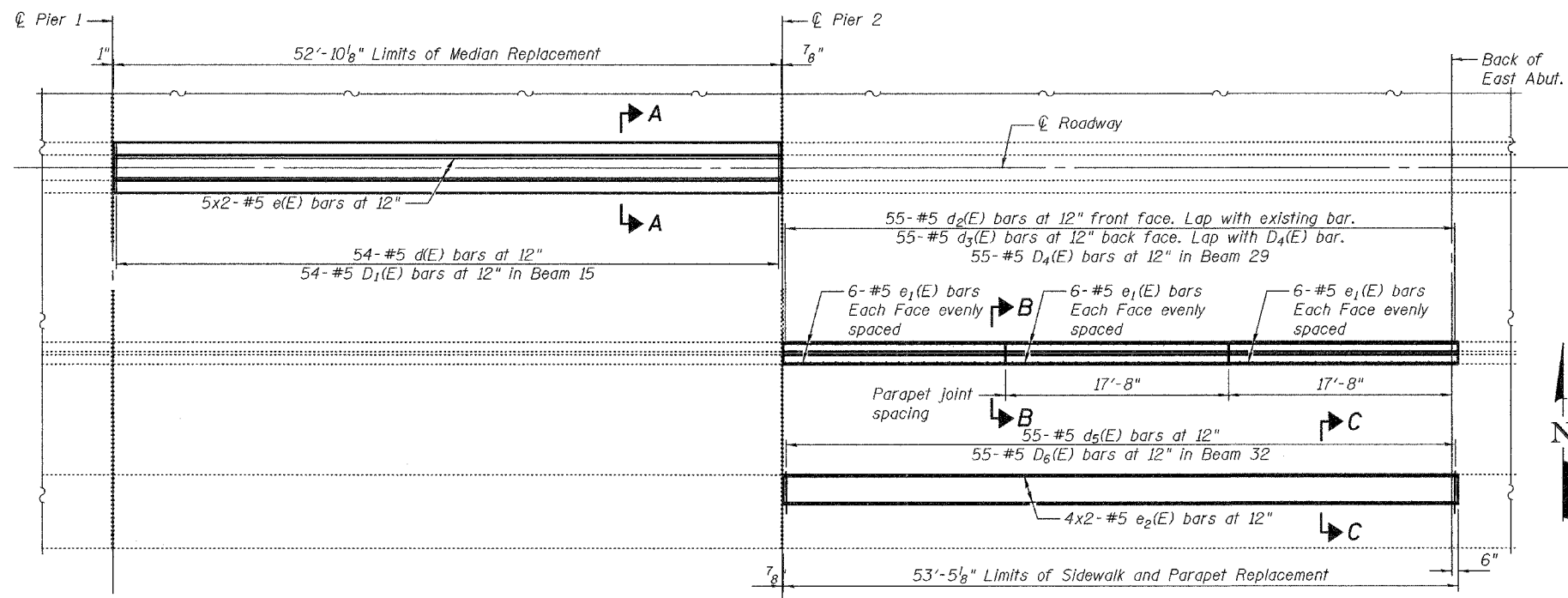
SECTION C-C



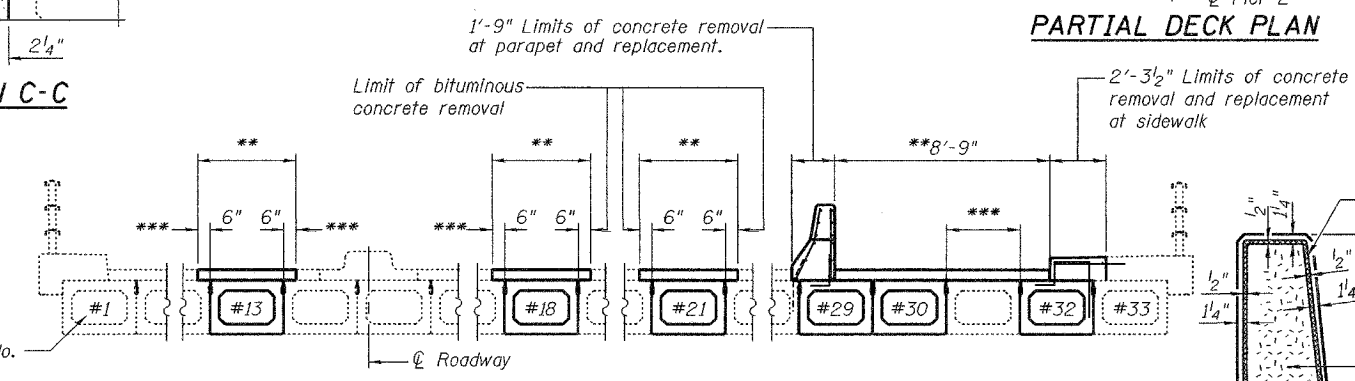
DECK CROSS SECTION  
SPAN #2  
(Looking East)



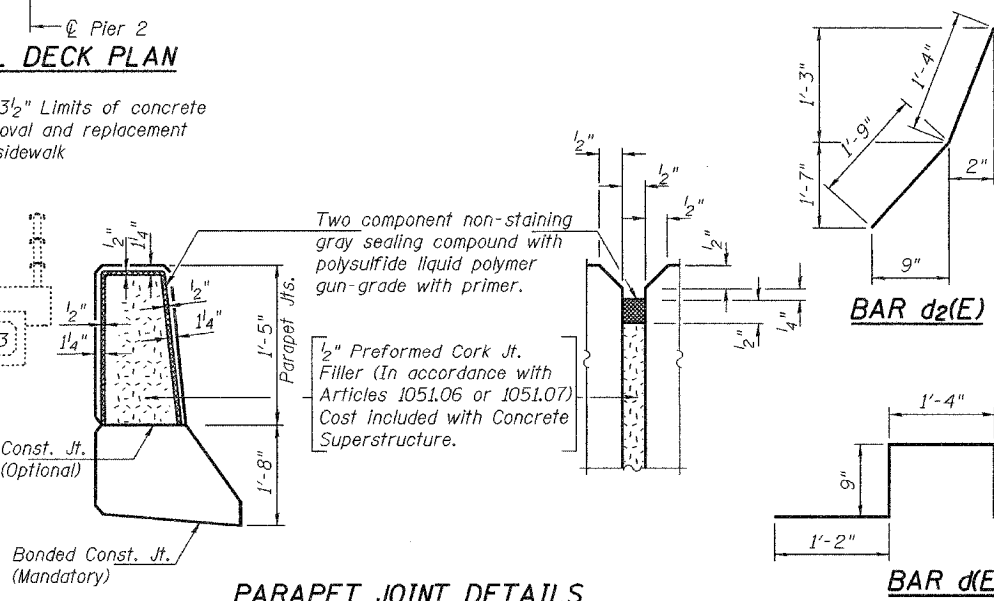
SECTION A-A



PARTIAL DECK PLAN



DECK CROSS SECTION  
SPAN #3  
(Looking East)



PARAPET JOINT DETAILS

BILL OF MATERIAL

| Bar                              | No. | Size | Length  | Shape    |
|----------------------------------|-----|------|---------|----------|
| d(E)                             | 54  | #5   | 5'-2"   | [Symbol] |
| d2(E)                            | 55  | #5   | 3'-1"   | [Symbol] |
| d3(E)                            | 55  | #5   | 2'-11"  | [Symbol] |
| d5(E)                            | 55  | #5   | 2'-10"  | [Symbol] |
| e(E)                             | 10  | #5   | 27'-6"  | [Symbol] |
| e1(E)                            | 36  | #5   | 17'-5"  | [Symbol] |
| e2(E)                            | 8   | #5   | 27'-10" | [Symbol] |
| Concrete Removal                 |     |      | Cu. Yd. | 16.8     |
| Concrete Superstructure          |     |      | Cu. Yd. | 18.7     |
| Reinforcement Bars, Epoxy Coated |     |      | Lbs.    | 1970     |

Reinforcement bars designated (E) shall be epoxy coated.  
Bars indicated thus 1 x 2-#5 etc. indicates 1 line of bars with 2 lengths per line.

DECK CROSS SECTIONS  
AND DECK DETAILS  
F.A.U. RT. 9877  
OVER SALT CREEK  
DUPAGE COUNTY  
SN 022-0084

|          |                  |
|----------|------------------|
| DESIGNED | V.H.V.           |
| CHECKED  | A.T.H.           |
| DRAWN    | Drew Christopher |
| CHECKED  | V.H.V. A.T.H.    |

|          |   |
|----------|---|
| EXAMINED | John A. Morris<br>ENGINEER OF STRUCTURAL SERVICES       |
| PASSED   | Ralph E. Anderson<br>ENGINEER OF BRIDGES AND STRUCTURES |

May 3, 2005