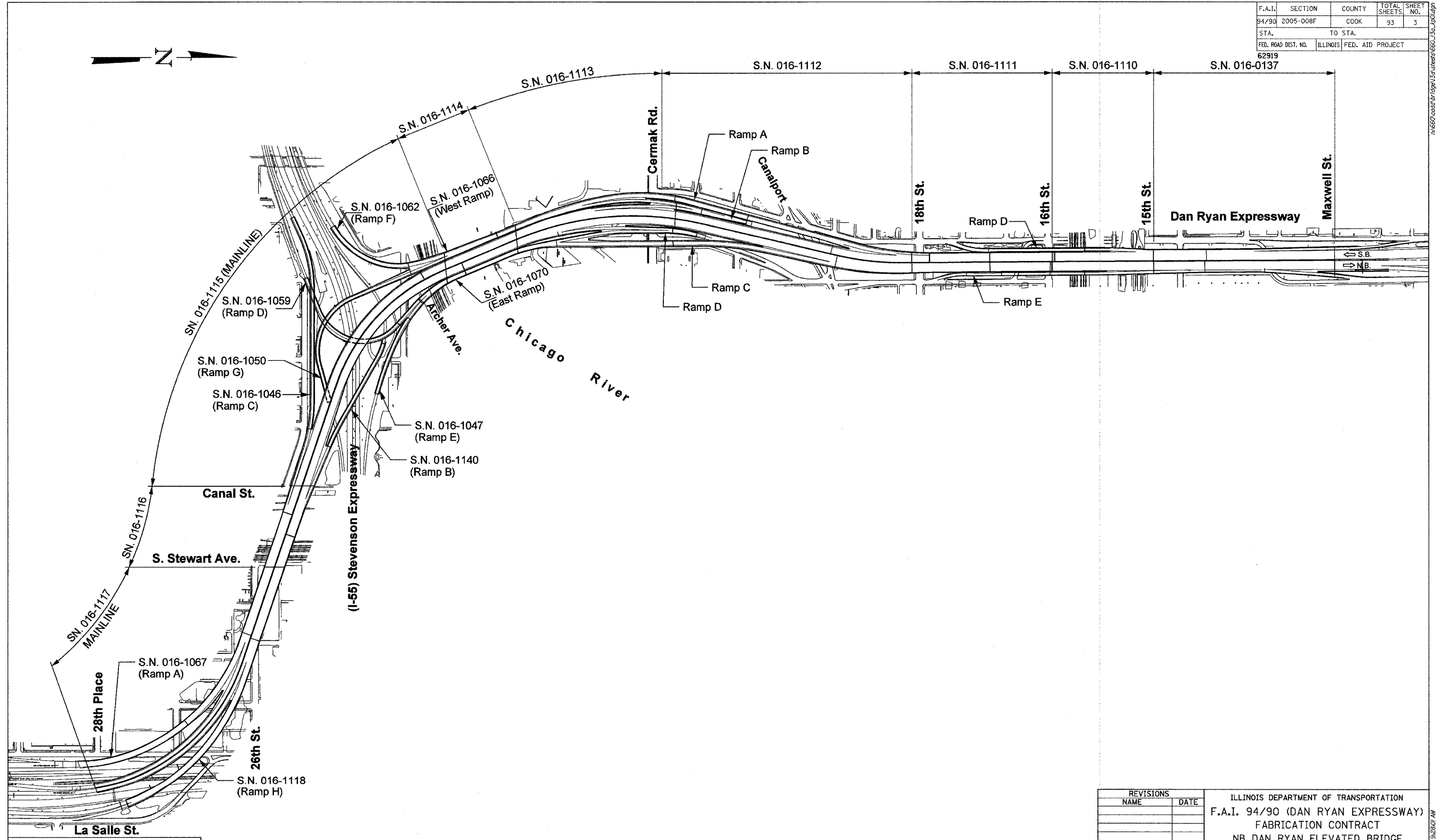
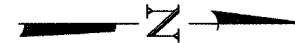


| | | | | |
|---------------------|-----------|------------------|--------------|-----------|
| F.A.I. | SECTION | COUNTY | TOTAL SHEETS | SHEET NO. |
| 94/90 | 2005-008F | COOK | 93 | 3 |
| STA. | | TO STA. | | |
| FED. ROAD DIST. NO. | ILLINOIS | FED. AID PROJECT | | |
| 62919 | | | | |



BOWMAN, BARRETT & ASSOCIATES INC.
 CONSULTING ENGINEERS
 110 EAST MADISON STREET SUITE 2616 CHICAGO, ILLINOIS 60601
 JOB NO. 648

| REVISIONS | |
|-----------|------|
| NAME | DATE |
| | |
| | |
| | |
| | |
| | |
| | |
| | |
| | |
| | |
| | |

ILLINOIS DEPARTMENT OF TRANSPORTATION
 F.A.I. 94/90 (DAN RYAN EXPRESSWAY)
 FABRICATION CONTRACT
 NB DAN RYAN ELEVATED BRIDGE
 REPAIR FROM 15TH TO 28TH STREETS
 VIADUCT KEY PLAN

SCALE: 1"=300'
 DATE: 5/23/2005

DRAWN BY: BDC
 CHECKED BY: BLU

5/23/2005