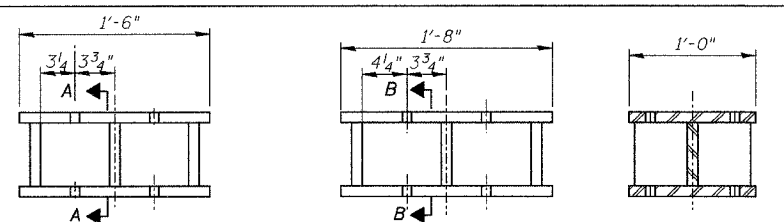


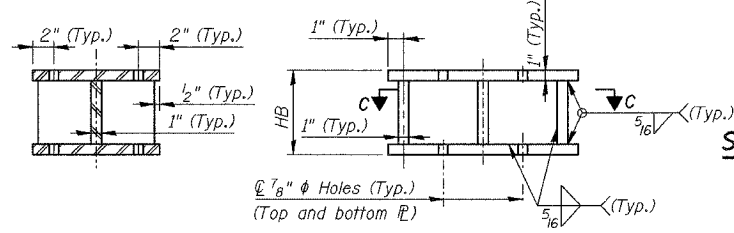
F.A.I.	SECTION	COUNTY	TOTAL SHEETS	SHEET NO.
94/90	2005-008F	COOK	93	14
STA.		TO STA.		
FED. ROAD DIST. NO.	ILLINOIS	FED. AID PROJECT		
62919				



TYPE A
20 REQ'D

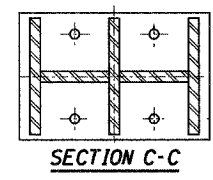
TYPE B
38 REQ'D

SECTION A-A
TYPE A, D, E



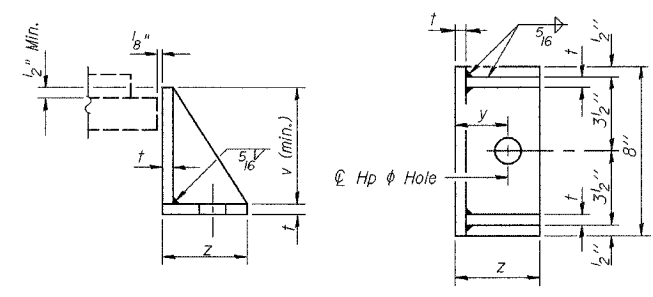
TYPICAL SIDE VIEW

TYPICAL ELEVATION



SECTION C-C

FABRICATED STEEL EXTENSION DETAILS



SIDE RETAINER

Equivalent rolled angle with stiffeners will be allowed in lieu of welded plates. Weight Included with Structural Steel.

STEEL EXTENSION TYPE SCHEDULE S/N 016-0137

PIER NO.	BEAM NO.											
	22	21	20	19	18	17	16	15	14	13	12	
8	C	B	B	B	B	B	B	B	B	B	B	
10	D	A	A	A	A	A	A	A	A	A	A	
42	41	40	39	38	37	36	35	34	33			
12	C	B	B	B	B	B	B	B	B	B	B	
14	C	B	B	B	B	B	B	B	B	B	B	
62	61	60	59	58	57	56	55	54	53			
16	E	C	C	C	C	C	C	C	C	C	C	
84	83	82	81	80	79	78	77	76	75	74		
20	D	A	A	A	A	A	A	A	A	A	A	
22	C	B	B	B	B	B	B	B	B	B	B	

STEEL EXTENSION TYPE SCHEDULE S/N 016-1110

PIER NO.	BEAM NO.							
	28	27	26	25	24	23	22	21
2	I	I	I	I	I	I	I	I
67	66	65	64	63	62	61	60	59
5	F	F	F	F	F	F	F	F

STEEL EXTENSION TYPE SCHEDULE S/N 016-1111

PIER NO.	BEAM NO.							
	GR1	GR2	GR3	GR4	GR5	GR6	GR7	GR8
3	G	G	G	G	G	H	H	H
4	G	G	G	G	G	G	G	G
6	G	G	G	G	G	G	G	G
8	G	G	G	G	G	G	G	G
9	G	G	G	G	G	G	G	G
11	G	G	G	G	G	G	G	G

HB SCHEDULE S/N 016-0137

PIER NO.	BEAM NO.											
	22	21	20	19	18	17	16	15	14	13	12	
8	9 1/16	9 1/16	9 1/16	9 1/16	9 1/16	9 7/8	9 13/16	9 1/16	9 1/16	9 1/16	9 1/16	
10	10 1/2	10 1/2	10 1/2	10 1/2	10 1/2	10 1/2	10 1/2	11 1/2	10 1/16	10 1/2	10 1/2	
42	41	40	39	38	37	36	35	34	33			
12	10 1/16	10 1/16	10 1/16	10 1/16	10 1/16	10 1/16	10 1/16	10 1/16	10 1/16	10 1/16	10 1/16	
14	10 1/16	10 1/16	10 1/16	10 1/16	10 1/16	10 1/16	10 1/16	10 1/16	10 1/16	10 1/16	10 1/16	
62	61	60	59	58	57	56	55	54	53			
16	10 1/16	10 1/16	10 1/16	10 1/16	10 1/16	10 1/16	10 1/16	10 1/16	10 1/16	10 1/16	10 1/16	
84	83	82	81	80	79	78	77	76	75	74		
20	10 1/2	10 1/2	10 1/2	10 1/2	10 1/2	11	10 1/2	10 1/2	10 1/2	10 1/2	10 1/2	
22	10 1/16	10 1/16	10 1/16	10 1/16	10 1/16	10 3/16	10 5/16	10 1/16	10 1/16	10 1/16	10 1/16	

HB SCHEDULE S/N 016-1110

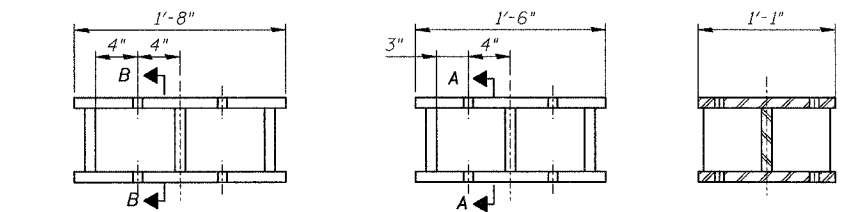
PIER NO.	BEAM NO.							
	28	27	26	25	24	23	22	21
2	11 7/8	11 7/8	11 7/8	11 7/8	11 7/8	11 7/8	11 7/8	11 7/8
67	66	65	64	63	62	61	60	59
5	9 1/16	9 1/16	9 1/16	9 1/16	9 1/16	9 1/16	9 1/16	9 1/16

HB SCHEDULE S/N 016-1111

PIER NO.	BEAM NO.							
	GR1	GR2	GR3	GR4	GR5	GR6	GR7	GR8
3	9 7/16	9 7/16	9 7/16	9 7/16	9 7/16	9 9/16	9 9/16	9 9/16
4	11 13/16	11 13/16	11 13/16	11 13/16	11 13/16	11 13/16	11 13/16	11 13/16
6	11 1/16	11 1/16	11 1/16	11 1/16	11 1/16	11 1/16	11 1/16	11 1/16
8	9 7/16	9 7/16	9 7/16	9 7/16	9 7/16	9 9/16	9 9/16	9 9/16
9	11 13/16	11 13/16	11 13/16	11 13/16	11 13/16	11 13/16	11 13/16	11 13/16
11	11 13/16	11 13/16	11 13/16	11 13/16	11 13/16	11 13/16	11 13/16	11 13/16

Notes:

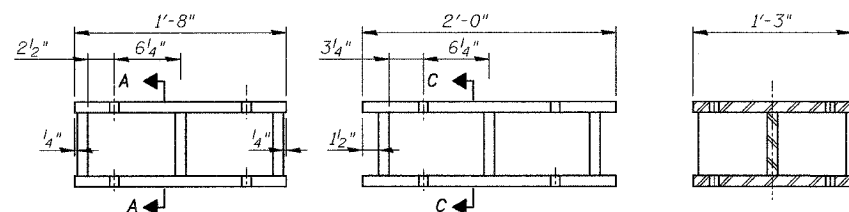
- Prior to ordering any material, the contractor shall verify in the field all bearing height and shim thickness dimensions.
- Use holes in new bearings as template to field drill holes in existing girders.
- The orientation of the bearing in the field shall be coordinated with the slope of the steel beam.
- The 1/8" TFE sheet shall be bonded directly to the top steel plate with a two-component, medium viscosity epoxy resin, conforming to the requirements of the Federal Specification MMM-A-134, Type I. The bond agent shall be applied on the full area of the contact surfaces.
- Bonding of 1/8" TFE sheet during vulcanizing process will be permitted provided the process and method of adjusting assembly height is approved by the Engineer.
- For procedure to jack and remove existing bearing see Sht. 13.
- Beam numbers reference as-built drawings, see Framing plans for cross reference.
- For Side Retainers dimensions see Sht. 13.



TYPE C
13 REQ'D

TYPE D
2 REQ'D

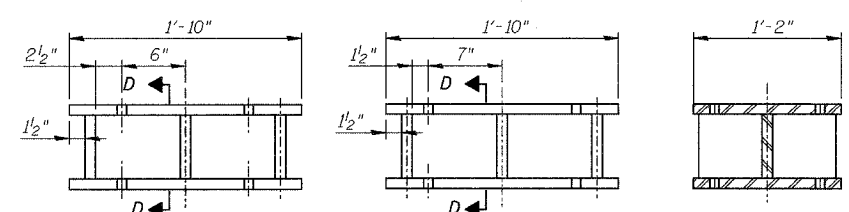
SECTION B-B
TYPE B, C



TYPE E
1 REQ'D

TYPE F
13 REQ'D

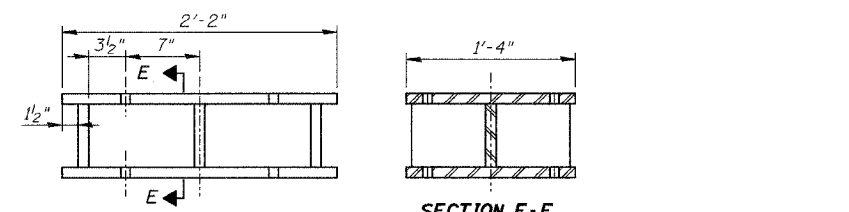
SECTION C-C
TYPE F



TYPE G
45 REQ'D

TYPE H
3 REQ'D

SECTION D-D
TYPE G, H

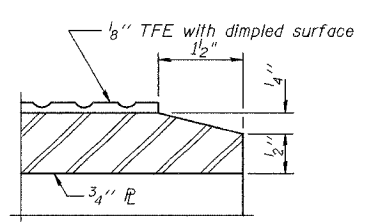


TYPE I
8 REQ'D

SECTION E-E
TYPE I

FABRICATED STEEL EXTENSION DETAILS

PLAN-TFE SURFACE



SECTION THRU TFE

BILL OF MATERIAL

Item	Unit	Quantity
Furnishing Elastomeric Bearing Assembly, Type I	Each	127
Furnishing Elastomeric Bearing Assembly, Type II	Each	16

REVISIONS	
NAME	DATE

ILLINOIS DEPARTMENT OF TRANSPORTATION
 F.A.I. 94/90 (DAN RYAN EXPRESSWAY)
 FABRICATION CONTRACT
 NB DAN RYAN ELEVATED BRIDGE
 REPAIR FROM 15TH TO 28TH STREETS
 STEEL EXTENSION DETAILS

SCALE: NTS
 DATE: 5/23/2005

DRAWN BY: LM
 CHECKED BY: BLU

BOWMAN, BARRETT & ASSOCIATES INC.
 CONSULTING ENGINEERS
 134 EAST RANDOLPH STREET SUITE 2656 CHICAGO, ILLINOIS 60601
 JOB NO. 668

10-31-2005 5/23/2005 10:31:20 AM