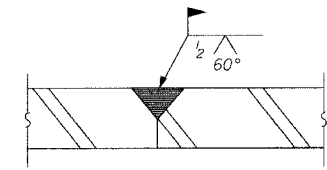
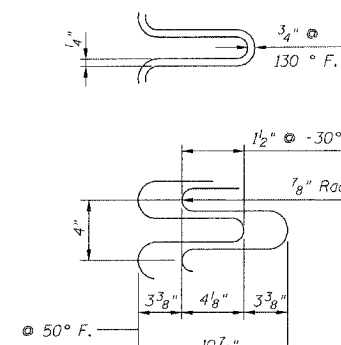
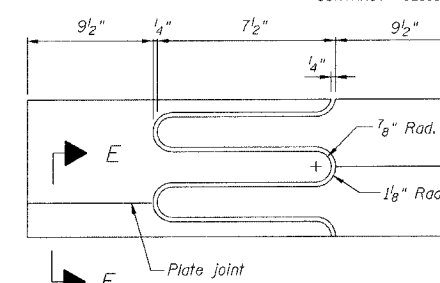
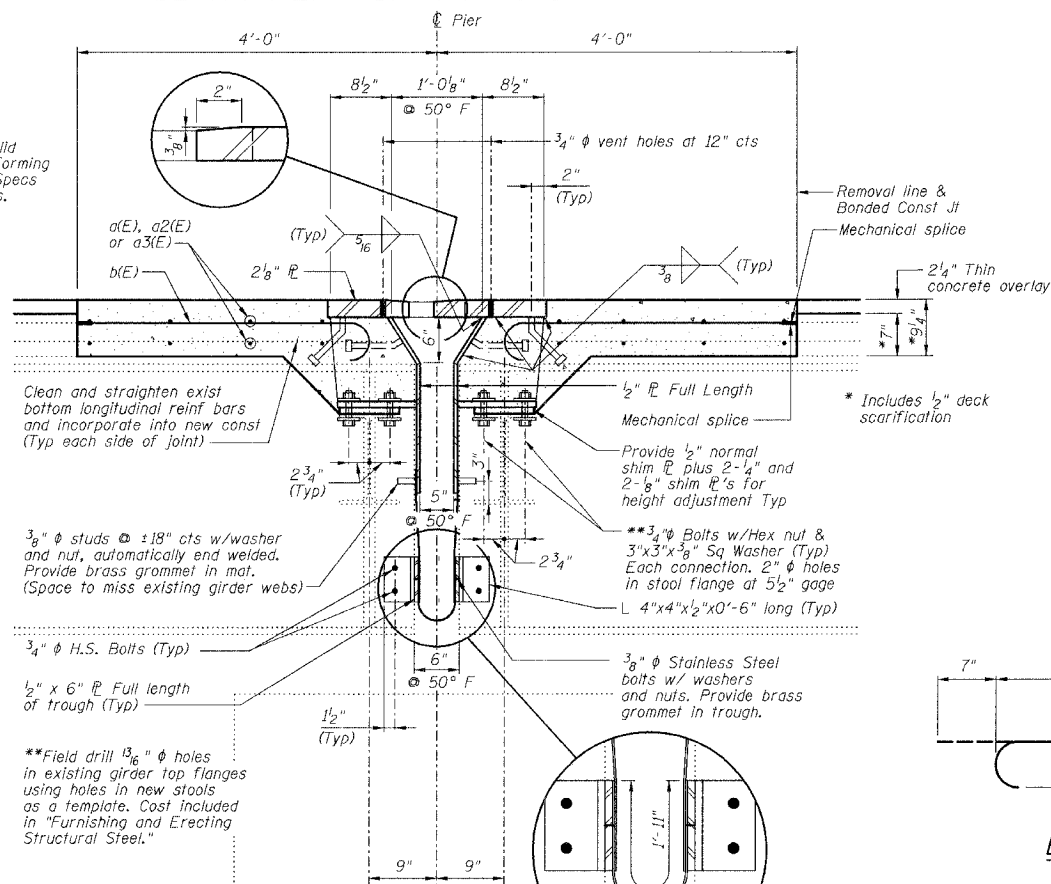
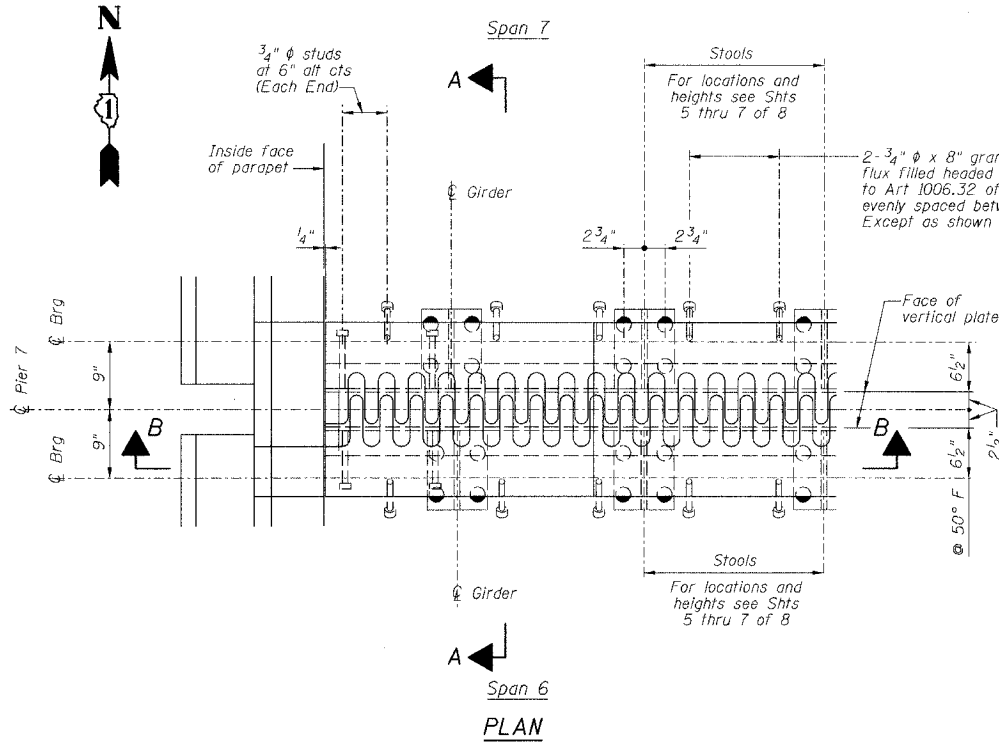


STATE OF ILLINOIS
DEPARTMENT OF TRANSPORTATION

ROUTE NO.	SECTION	COUNTY	TOTAL SHEETS	SHEET NO.
FAI 90/94	*	COOK	93	39
FED. ROAD DIST. NO.		ILLINOIS PROJECT		

Sheet No 4
of 8 Sheets

2005-008F
CONTRACT #62919

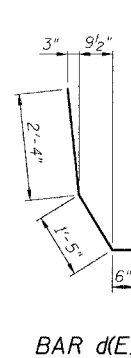


BILL OF MATERIAL

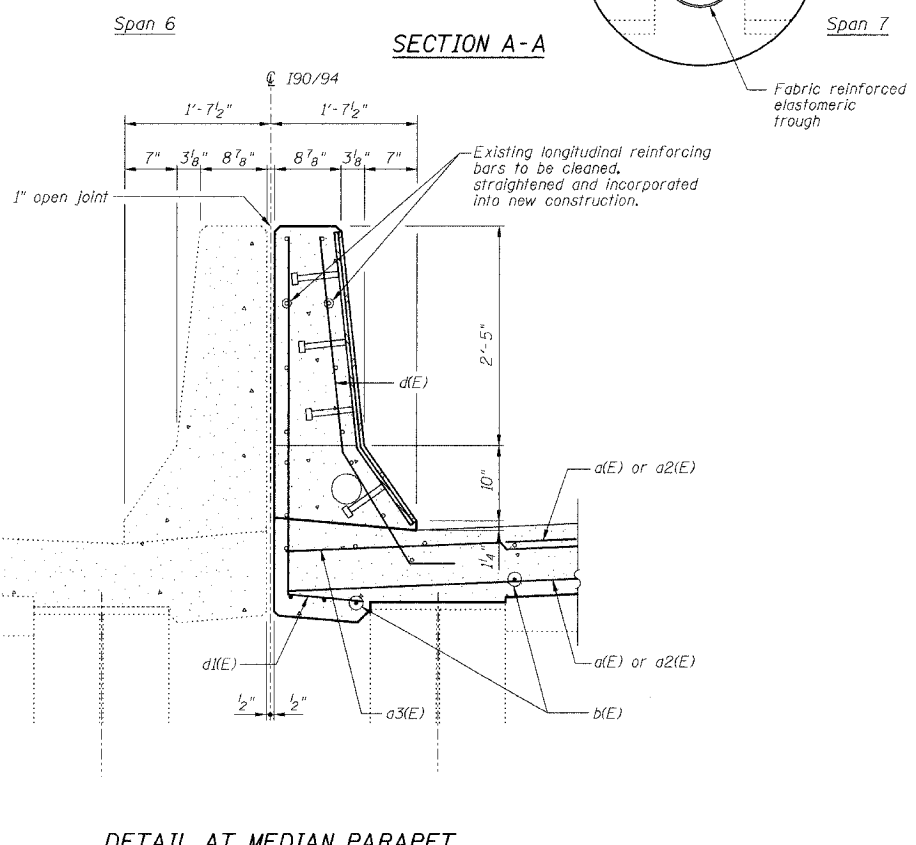
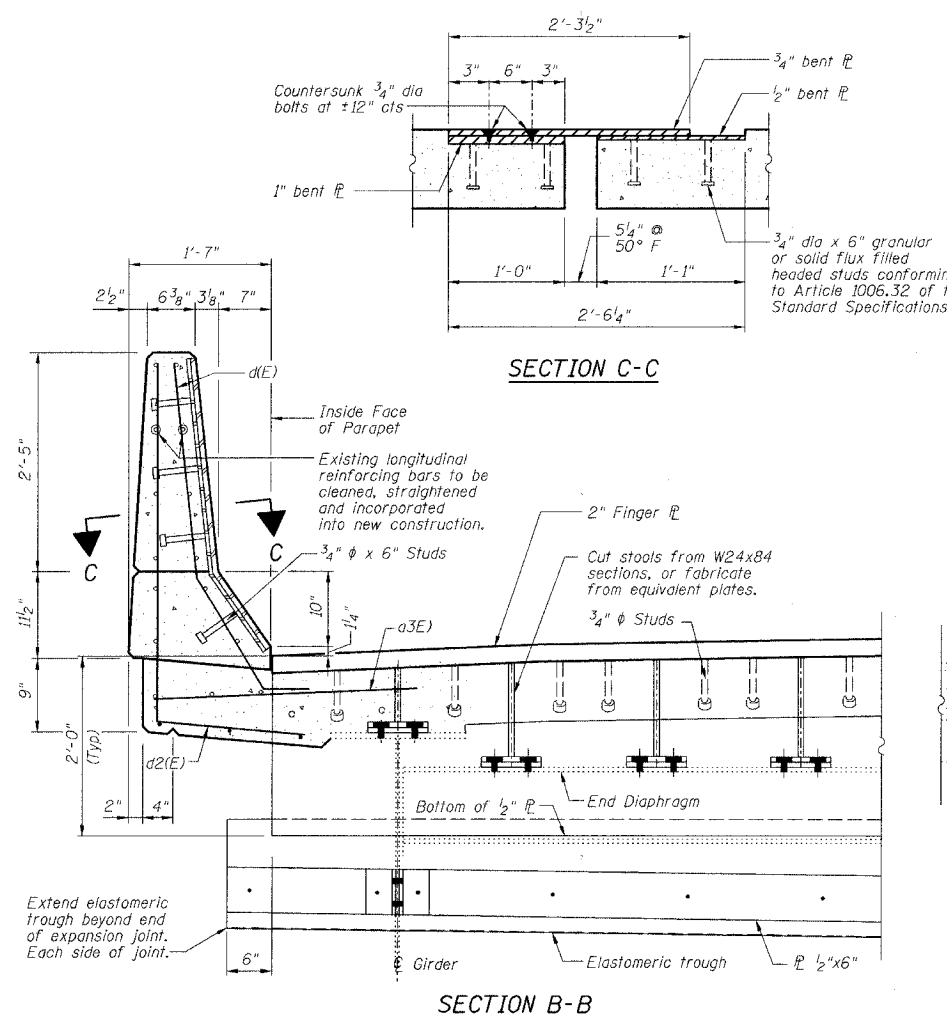
Bar	No.	Size	Length	Shape	
a(E)	24	#5	35'-0"	—	
a2(E)	24	#5	31'-0"	—	
a3(E)	16	#6	4'-6"	—	
b(E)	132	#5	3'-10"	—	
d(E)	16	#5	4'-3"	—	
d1(E)	8	#5	5'-2"	—	
d2(E)	8	#5	5'-10"	—	
Reinforcement Bars, Epoxy Coated				Pound	2460
Concrete Removal				Cu Yd	17.3
Concrete Superstructure				Cu Yd	20.1
Bar Splicers				Each	24
Mechanical Splice				Each	132

Reinforcing bars designated (E) shall be epoxy coated.

BAR b(E)



BARS d1(E) & d2(E)



NOTES

- The Contractor shall bolt the Stools of the Fingerplate Joint Assembly to the top of existing End Cross Frames and to the top of the existing girders, as shown in Section A-A of this drawing.
- Stainless steel bolts, washers and nuts shall meet the requirements of ASTM A193.
- The furnishing of all necessary hardware, stainless steel bolts, studs and washers, plates and angles shall be included with "Furnishing Structural Steel".
- Expansion Length = 418.6'

PIER NO. 7

FINGER PLATE EXPANSION JOINT DETAILS

REVISIONS	STATE OF ILLINOIS DEPARTMENT OF TRANSPORTATION DIVISION OF HIGHWAYS	DRAWN BY DATE RLK 5/03
1	FAI RTE 90/94	CHECKED BY DATE SDS 5/03
2	DAN RYAN EXPRESSWAY	BOOK NUMBER
3	SN 016-1111 (NORTHBOUND)	PROJECT NO.
4	SEC	COOK COUNTY
5		4222-3
6		SHEET NO.
7	HOMER L. CHASTAIN & ASSOCIATES CONSULTING ENGINEERS	8800 W. BRYAN MAWR AVENUE SUITE 204 CHICAGO, ILLINOIS 60631 312-714-0080 FAX 312-714-0085