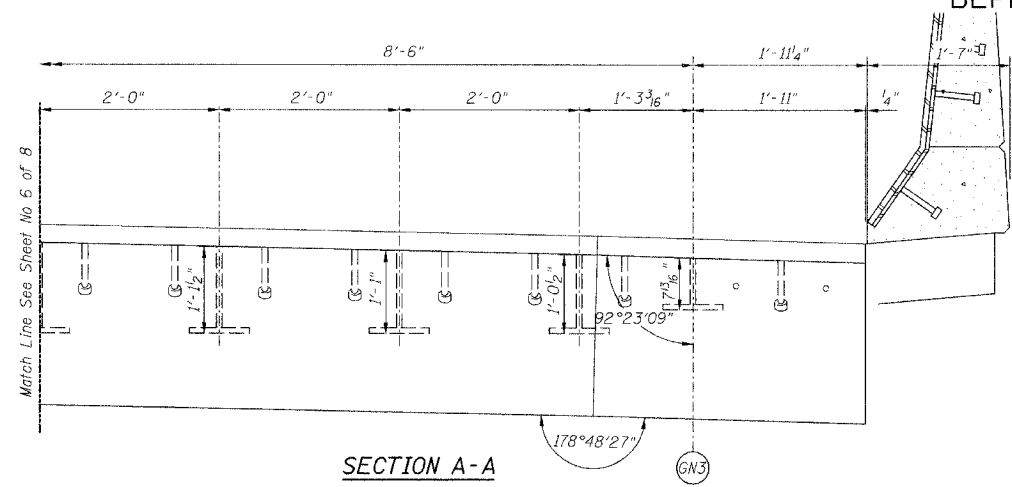


STATE OF ILLINOIS
DEPARTMENT OF TRANSPORTATION

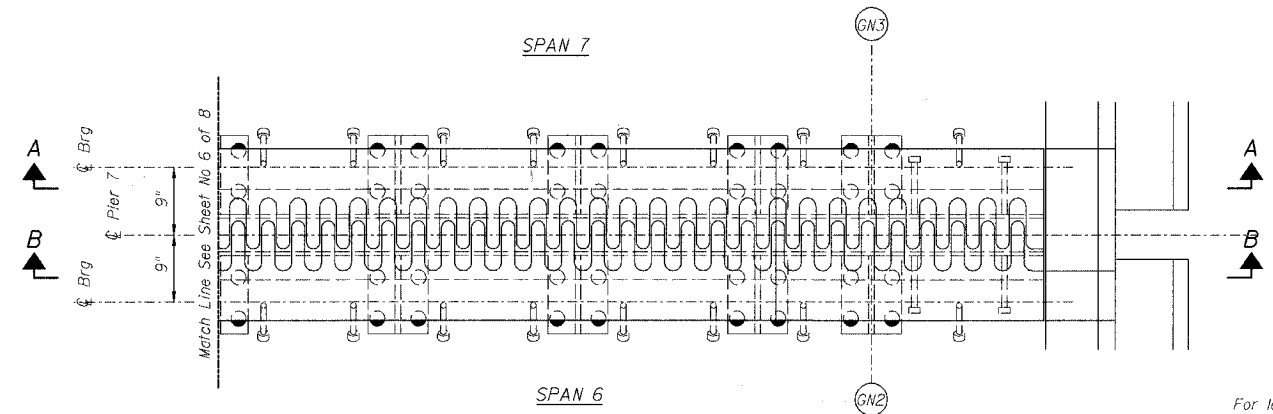
ROUTE NO.	SECTION	COUNTY	TOTAL SHEETS	SHEET NO.
FAI 90/94	*	COOK	93	30
FED. ROAD DIST. NO.		ILLINOIS PROJECT		

Sheet No 7
of 8 Sheets

* 2005-008F
CONTRACT #62919



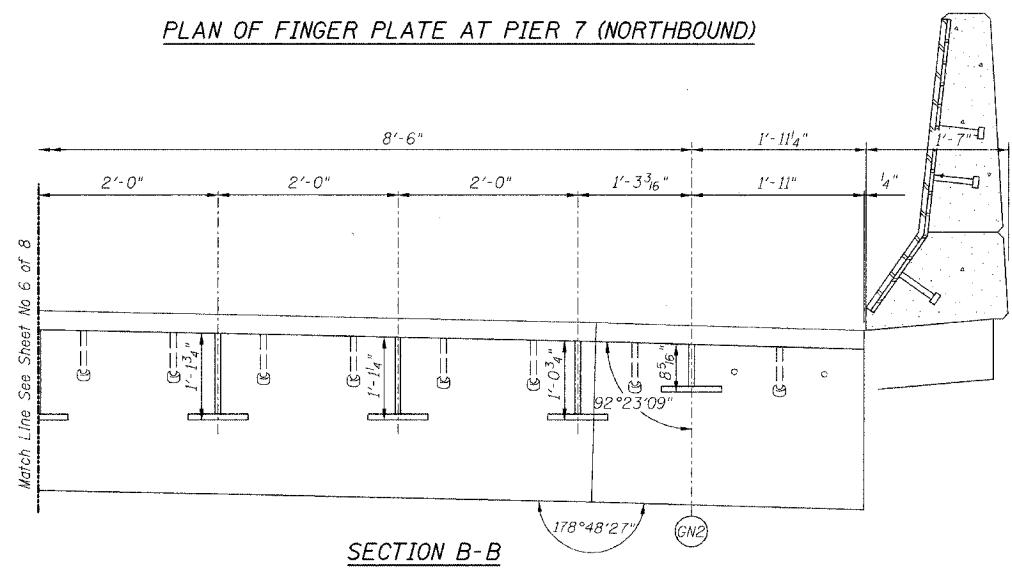
SECTION A-A



SPAN 6

PLAN OF FINGER PLATE AT PIER 7 (NORTHBOUND)

For location of splice with respect to fingers see Flame Cutting Diagram.



SECTION B-B

PIER NO. 7

REVISIONS		STATE OF ILLINOIS DEPARTMENT OF TRANSPORTATION DIVISION OF HIGHWAYS		DRAWN BY RLK	DATE 5/03
1					
2					
3					
4					
5					
6					
7					
8					
9					
10					

FAI RTE 90/94	DAN RYAN EXPRESSWAY	PROJECT NO. 4222-3
SEC	SN 016-1111 (NORTHBOUND)	SHEET NO.
HOMER L. CHASTAIN & ASSOCIATES CONSULTING ENGINEERS		8609 W. BRYAN MAVER AVENUE SUITE 204 CHICAGO, ILLINOIS 60631 312-714-6266 FAX 312-714-6266

Note:
For optional splice detail see
flame cutting diagram on Sheet No. 4