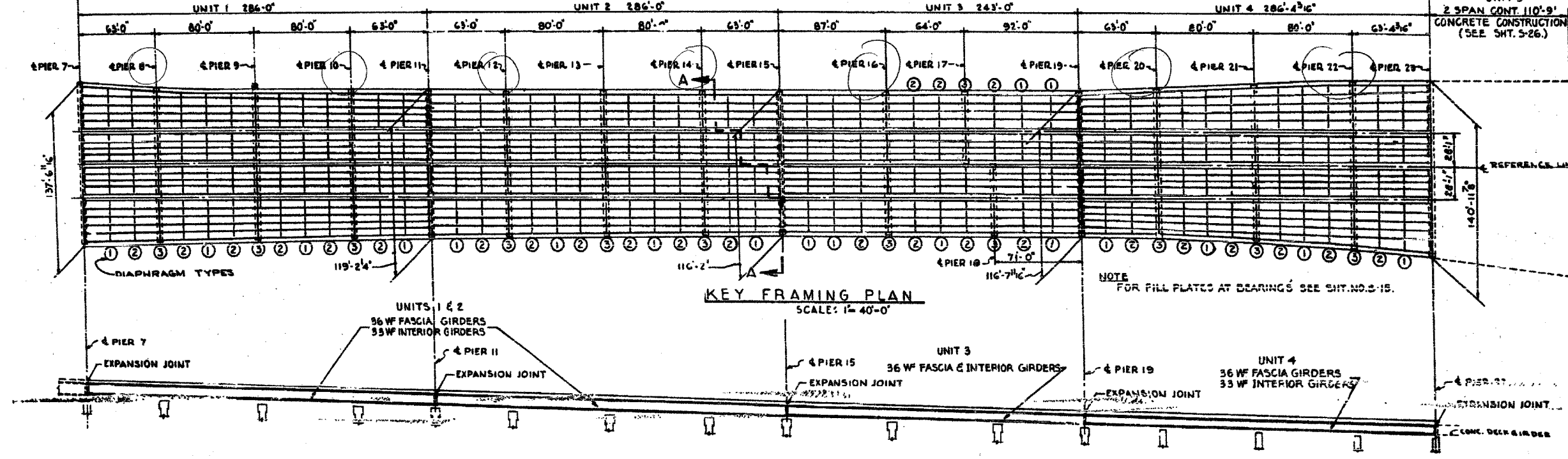


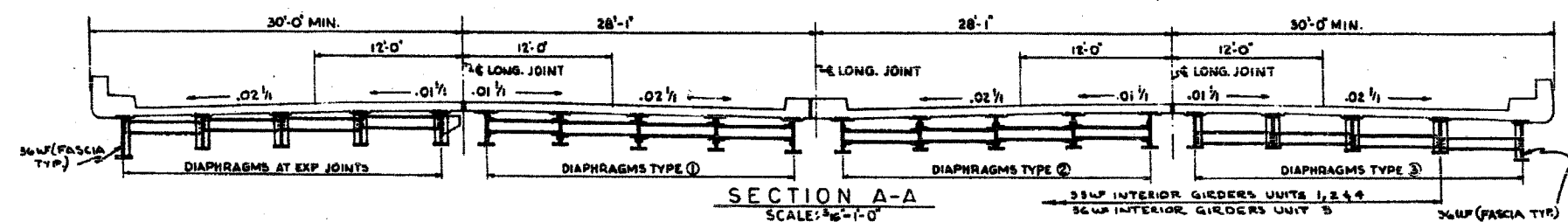
CONTRACT CONTRACT
 S2525.3-2M S2525.3-1M
 STA. 711+33.0



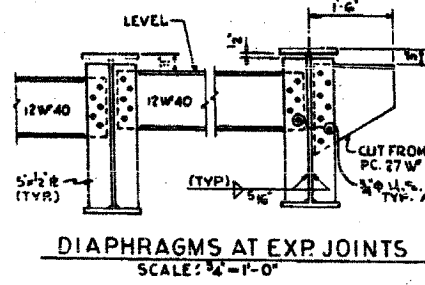
F.A.I.	SECTION	COUNTY	TOTAL SHEETS	SHEET NO.
94/90	2005-008F	COOK	93	73
STA.	TO STA.			
FED. ROAD DIST. NO.	ILLINOIS	FED. AID PROJECT		
62919				

KEY FRAMING PLAN
 SCALE: 1" = 40'-0"

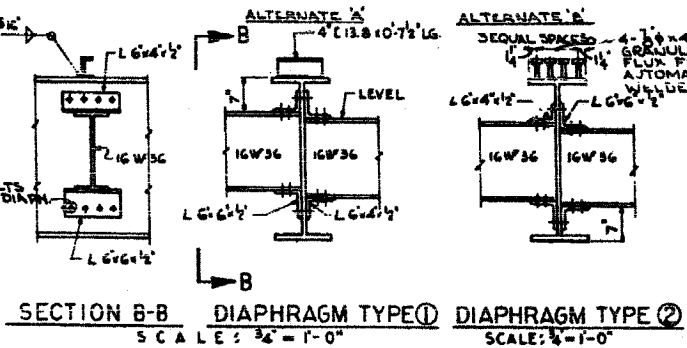
GIRDER ELEVATION
 HORIZ. SCALE: 1" = 40'-0"
 VERT. SCALE: 1" = 15'-0"



SECTION A-A
 SCALE: 3/8" = 1'-0"

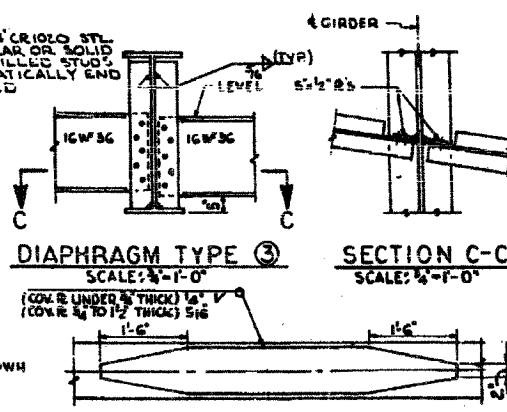


DIAPHRAGMS AT EXP JOINTS
 SCALE: 3/4" = 1'-0"

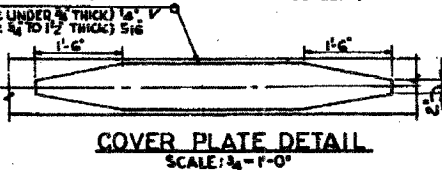


SECTION B-B DIAPHRAGM TYPE 1 DIAPHRAGM TYPE 2
 SCALE: 3/8" = 1'-0"

NOTE: CHOICE OF SHEAR CONNECTORS RESTRICTED TO TYPES SHOWN IN ALTERNATES 'A' & 'B'. FOR SPACING OF SHEAR CONNECTORS SEE SHEETS S12, S14, & S15



DIAPHRAGM TYPE 3 SECTION C-C
 SCALE: 3/8" = 1'-0"



COVER PLATE DETAIL
 SCALE: 3/4" = 1'-0"

STRUCTURAL STEEL NOTES

ALL FURNISHING, FABRICATING, TRANSPORTING, ERECTING AND PAINTING OF STRUCTURAL STEEL SHALL BE IN ACCORDANCE WITH SECTION 9, AND 50 OF THE STANDARD SPECIFICATIONS.

EXCEPT WHERE OTHERWISE NOTED, ALL STRUCTURAL STEEL SHALL CONFORM TO SPECIFICATIONS FOR STEEL FOR BRIDGES AND BUILDINGS ASTM DESIGNATION A-7 AND ASTM DESIGNATION A-375 AND WHERE APPLICABLE, TO THE REQUIREMENTS OF ARTICLE 129.2, AND 129.3 (a) OF THE STANDARD SPECIFICATIONS.

BEARING AND SPLICE NOTES:-

ALL GIRDER FIELD SPLICES SHALL BE END-FINISHED, REAMED AND MATCH-MARKED FOR SHIPMENT WHILE THE MEMBERS ARE SHOP ASSEMBLED IN PROPER ALIGNMENT, WITH OR WITHOUT DIAPHRAGMS. ALL GIRDER FIELD SPLICES SHALL BE END-FINISHED 11/16" Ø, REAMED TO 13/16" Ø FOR 3/4" Ø BOLTS AND REAMED TO 15/16" Ø FOR 7/8" Ø BOLTS.

ALL GIRDERS SHALL BE ERECTED FULL LENGTH IN THE SHOP BEFORE REAMING AND INSPECTION.

STRUCTURAL STEEL SHALL RECEIVE ONE SHOP COAT OF RED LEAD PAINT. PARTS INACCESSIBLE AFTER ERECTION SHALL HAVE TWO SHOP COATS OF RED LEAD PAINT. FOR ADDITIONAL SHOP AND FIELD PAINT COATS, SEE THE SPECIAL PROVISIONS.

ALL ROLLERS, ROCKERS, BOLSTERS, BEARING PLATES, LEAD PLATES, PANTLES, ANCHOR BOLTS AND SPLICES SHALL BE FABRICATED AND SET IN ACCORDANCE WITH ARTICLES 96.5 OF THE STANDARD SPECIFICATIONS AND SHALL BE FINISHED IN ACCORDANCE WITH ARTICLE 96.3 (a). THESE ITEMS ARE INCLUDED IN THE WEIGHT OF STRUCTURAL STEEL.

SPLICE PLATES TO BE MATCH-MARKED FOR SHIPMENT.

ANCHOR BOLTS SHALL BE SET BEFORE BOLTING DIAPHRAGMS OVER PIERS AND ABUTMENTS.

FINISHED SURFACES OF BEARING AND ROLLERS SHALL BE TREATED WITH ANTI-RUST COMPOUND BEFORE SHIPMENT AS STATED IN ARTICLE 96.4 OF THE STANDARD SPECIFICATIONS.

ALL FIELD CONNECTIONS SHALL BE MADE WITH 3/4" Ø OR 7/8" Ø HIGH STRENGTH BOLTS AS INDICATED.

ALL RIVETS, UNLESS OTHERWISE SHOWN OR NOTED, SHALL BE 3/4" Ø, OPEN HOLES 15/16" Ø.

SUMMARY OF STRUCTURAL STEEL UNITS 1, 2, 3, 4 & 5

ITEM	UNIT	QUANTITY	ASTM AT	ASTM B
GIRDERS	POUND	3,724,445		89160
FILL PLATES & SPLICE PLATES	POUND	126,595		
DIAPHRAGMS	POUND	2,842,215		
GIRDER BEARINGS	POUND	190,515		
EXPANSION GUARD	POUND	155,750		
TOTAL	POUND	4,449,620		89160

INCLUDED IN SUMMARY ON SHEET S2

CITY OF CHICAGO
 DEPARTMENT OF PUBLIC WORKS
 BUREAU OF ENGINEERING
 SOUTH ROUTE SUPERHIGHWAY
 ELEVATED HIGHWAY
 W. 15 TH ST. TO W. MAXWELL ST.
 SECTION 4-2825.3-1W

STEEL FRAMING PLAN
 DE LEHN, GATHER & COMPANY
 CONSULTING ENGINEERS
 CHICAGO
 DATE: JUNE 1999
 SCALE AS NOTED SHEET S12 OF 64 SHEETS

Sheet S12 of 64

REVISIONS

NAME	DATE

ILLINOIS DEPARTMENT OF TRANSPORTATION
 F.A.I. 94/90 (DAN RYAN EXPRESSWAY)
 FABRICATION CONTRACT
 NB DAN RYAN ELEVATED BRIDGE
 REPAIR FROM 15TH TO 28TH STREETS
 EXISTING PLAN INFORMATION SN 016-0137
 SCALE: NTS
 DATE: 5/23/2005
 DRAWN BY: BDC
 CHECKED BY: BLU

FOR INFORMATION ONLY

BOWMAN, BARRETT & ASSOCIATES INC.
 CONSULTING ENGINEERS
 100 EAST RANDOLPH STREET SUITE 2000 CHICAGO, ILLINOIS 60601
 JOB NO. 440

Designed By: J.B.
 Drawn By: H.M.
 Checked By: R.M.S.
 In Charge: H.S.W.L.F.
 Approved By: L.N.R.I.A.N.

5/23/2005 9:26:24 AM
 6600card/bur/brp/130/sheets/660_130_01.dgn