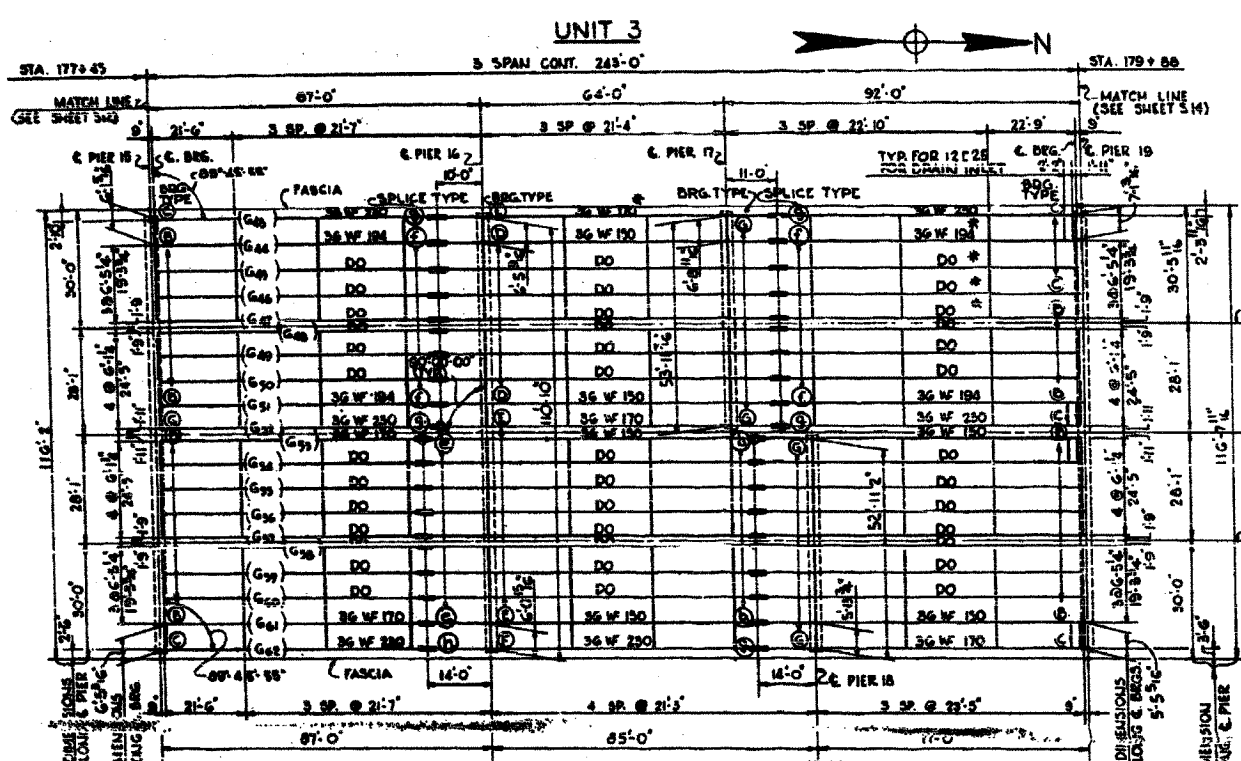
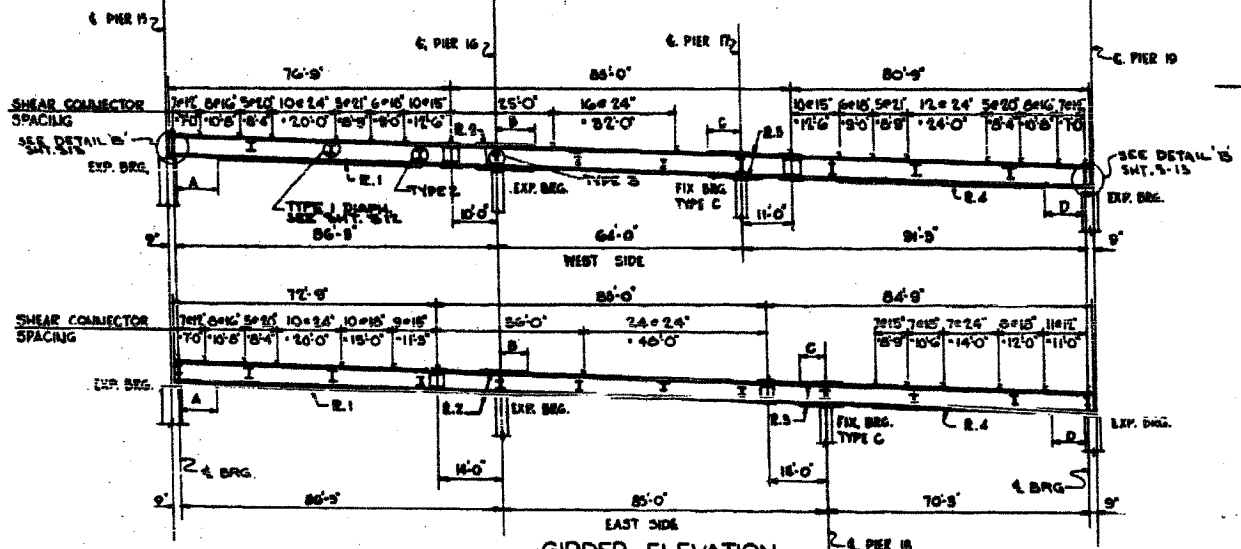


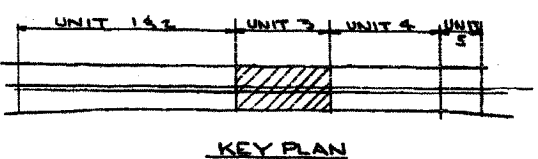
F.A.I.	SECTION	COUNTY	TOTAL SHEETS	SHEET NO.
94/90	2005-008F	COOK	93	75
STA.	TO STA.			
FED. ROAD DIST. NO.	ILLINOIS	FED. AID PROJECT		
62919				



**FRAMING PLAN**  
SCALE: 1"=20'-0"



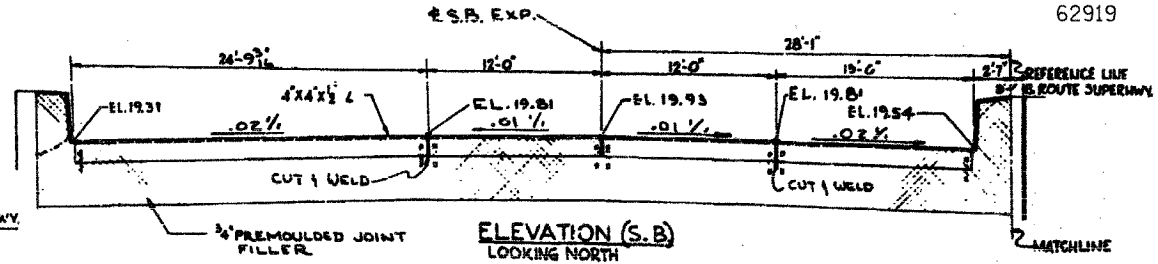
**GIRDER ELEVATION**  
HOR. SCALE: 1"=20'-0"  
VER. SCALE: 1"=10'-0"



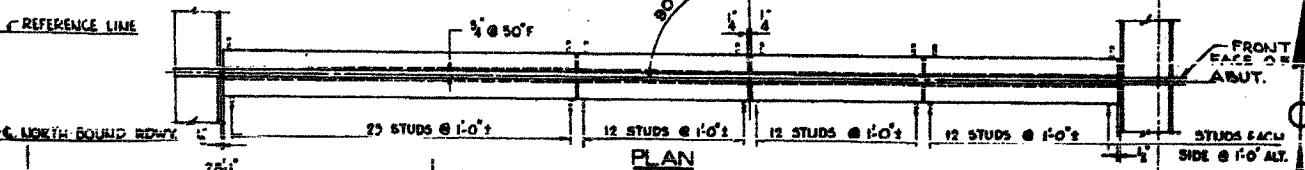
**KEY PLAN**

Designed By: J.S.  
 Drawn By: P.B.T.  
 Checked By: R.M.S.  
 In Charge: H.S.WULF  
 Approved By: L.M.RIAN

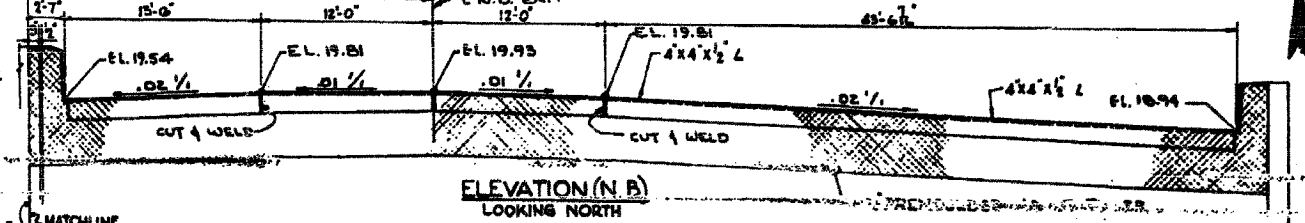
BOWMAN, BARRETT & ASSOCIATES INC.  
 CONSULTING ENGINEERS  
 230 EAST RANDOLPH STREET SUITE 2409 CHICAGO, ILLINOIS 60601  
 312.467.4444



**ELEVATION (S.B.)**  
LOOKING NORTH



**PLAN**



**ELEVATION (N.B.)**  
LOOKING NORTH



**PLAN**  
ABUTMENT EXPANSION GUARD

VENT HOLES @ 1'-0" C.C.  
 (STAGGER WITH 1/2" HOLES)

1" SEALING COMPOUND  
 3/4" x 3/4" OR 1020 STL.  
 GRANULAR OR SOLID FLUX  
 FILLED HEADED STUDS  
 AUTOMATICALLY END WELDED  
 (ALTERNATE AT 1'-0" CTES.)

1/2" x 1/2" BOLTS @ 12" CTS. FOR 3/4" BOLTS. ALL  
 BOLTS SHALL BE BURNED, SAWED OR  
 CLIPPED OFF FLUSH WITH BACK OF ANGLE  
 AFTER FORMS ARE REMOVED.

BILL OF MATERIAL			
ITEM	UNIT	A7	A7B
GIRDERS	POUND	850,825	88,120
DIAPHRAGMS	POUND	56,945	
ABUT. EXP. GUARD	POUND	3,955	

SPICE PLATES & BEARINGS BILLED ON  
 SHEET 5-18, FILL PLATES & BEARINGS, ONI-MS,  
 INCLUDED IN WEIGHT ON SHEET 5-12

**JOINT DETAIL**  
SCALE: 1/2"=1'-0"

GIRDER	COVER PLATE OFFSETS				COVER R.1	2-PLATES COVER R.2	2-PLATES COVER R.3	COVER R.4
	A	B	C	D				
43	8'-6"	9'-0"	11'-0"	8'-0"	10X1/2x57G	10X3/8x16G	10X3/8x16G	15X1/2x16G
44 TO 46	8'-6"	7'-6"	9'-0"	8'-0"	10X1/2x57G	10X3/8x16G	10X3/8x16G	15X1/2x16G
47	8'-6"	7'-6"	9'-0"	8'-0"	10X1/2x57G	10X3/8x16G	10X3/8x16G	15X1/2x16G
48 TO 51	8'-6"	7'-6"	9'-0"	8'-0"	10X1/2x57G	10X3/8x16G	10X3/8x16G	15X1/2x16G
52	8'-6"	9'-0"	11'-0"	8'-0"	15X3/8x57G	10X3/8x16G	10X3/8x16G	15X1/2x16G
53 TO 57	7'-6"	11'-0"	7'-0"	7'-6"	10X1/2x57G	10X3/8x16G	10X3/8x16G	10X1/2x16G
58 TO 61	7'-6"	11'-0"	7'-0"	7'-6"	10X1/2x57G	10X1/2x16G	10X1/2x16G	10X1/2x16G
62	7'-6"	8'-6"	8'-0"	7'-6"	15X1/2x57G	15X1/2x16G	10X1/2x16G	10X1/2x16G

\*NOTE: ALL COVER PLATES OVER 1" THICK & ALL W/ BEAMS WITH COVER PLATES OVER 1" THICK ARE TO BE TYPE-A7B STRUCTURAL STEEL, ALL OTHERS TO BE TYPE-A7 STRUCTURAL STEEL.

CITY OF CHICAGO  
 DEPARTMENT OF PUBLIC WORKS  
 BUREAU OF ENGINEERING  
**SOUTH ROUTE SUPERHIGHWAY**  
 ELEVATED HIGHWAY  
 W. 15 TH ST. TO W. MAXWELL ST.  
 SECTION 5-888.3 - 1H  
**STEEL FRAMING PLAN UNIT 3**  
**& ABUTMENT EXPANSION GUARD**

DE LEW, GUTHER & COMPANY  
 CONSULTING ENGINEERS CHICAGO  
 SCALE AS NOTED DATE: JUNE 1961  
 SHEET 514 OF 64 SHEETS

Sheet S14 of 64

REVISIONS	
NAME	DATE

ILLINOIS DEPARTMENT OF TRANSPORTATION  
 F.A.I. 94/90 (DAN RYAN EXPRESSWAY)  
 FABRICATION CONTRACT  
 NB DAN RYAN ELEVATED BRIDGE  
 REPAIR FROM 15TH TO 28TH STREETS  
 EXISTING PLAN INFORMATION SN 016-0137  
 SCALE: NTS DRAWN BY: BDC  
 DATE: 5/23/2005 CHECKED BY: BLU

FOR INFORMATION ONLY