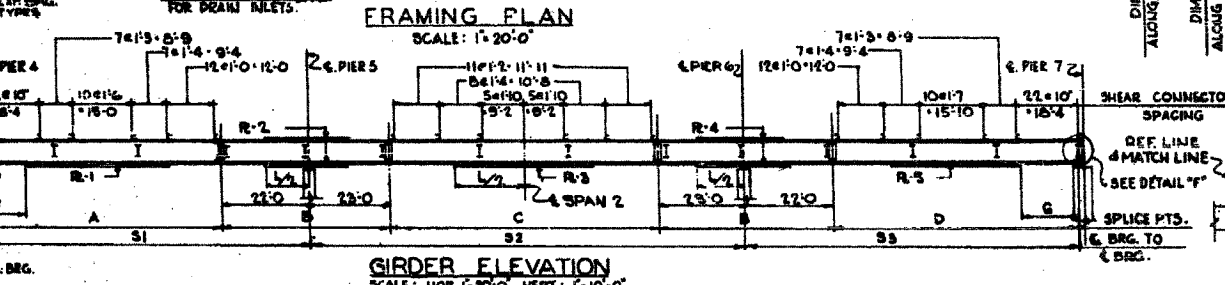
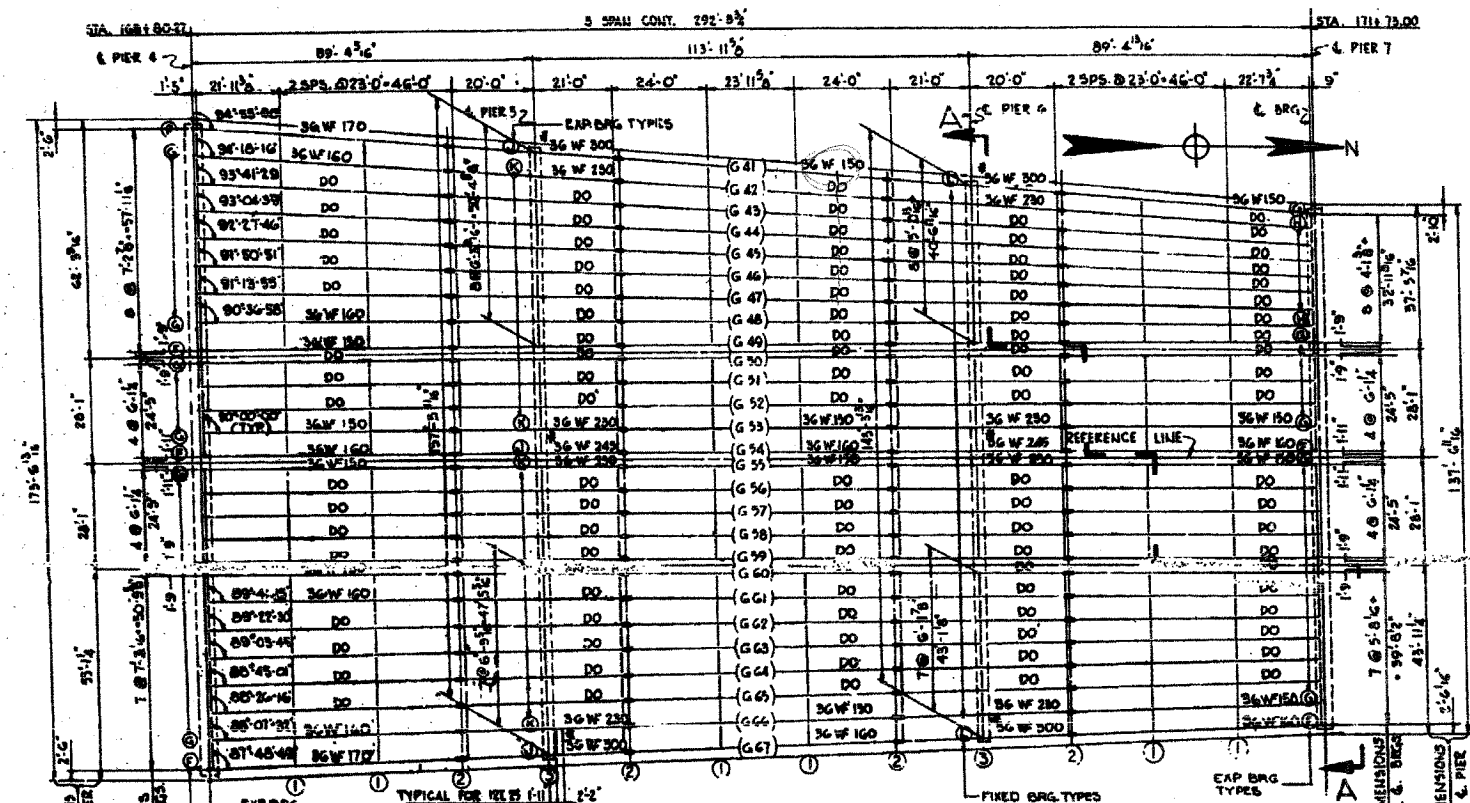


F.A.I.	SECTION	COUNTY	TOTAL SHEETS	SHEET NO.
94/90	2005-008F	COOK	93	81
STA.	TO STA.			
FED. ROAD DIST. NO.	ILLINOIS	FED. AID PROJECT		

62919



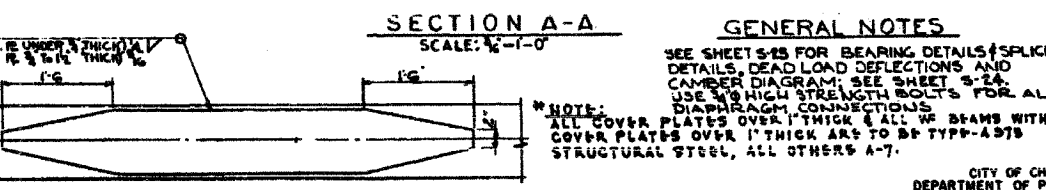
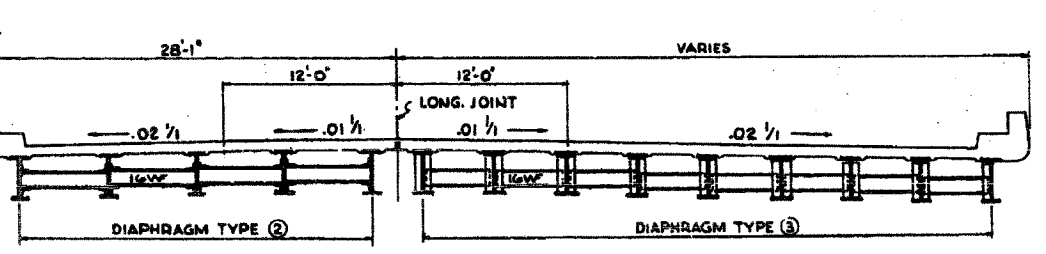
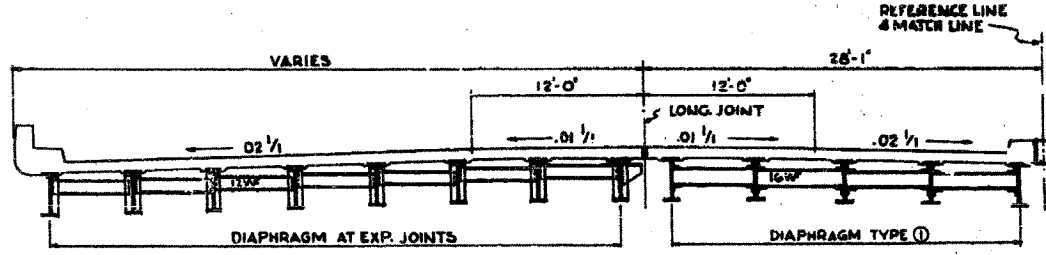
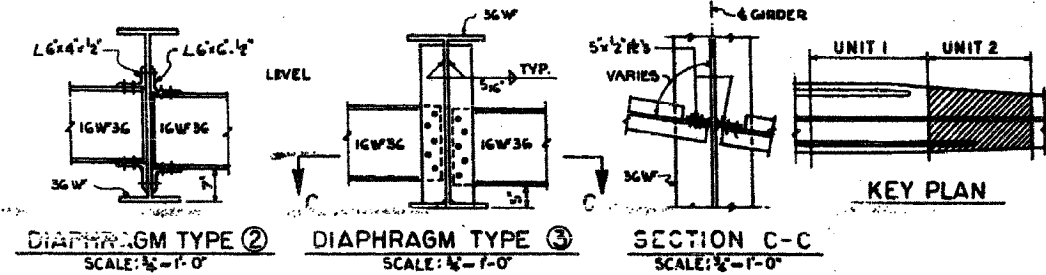
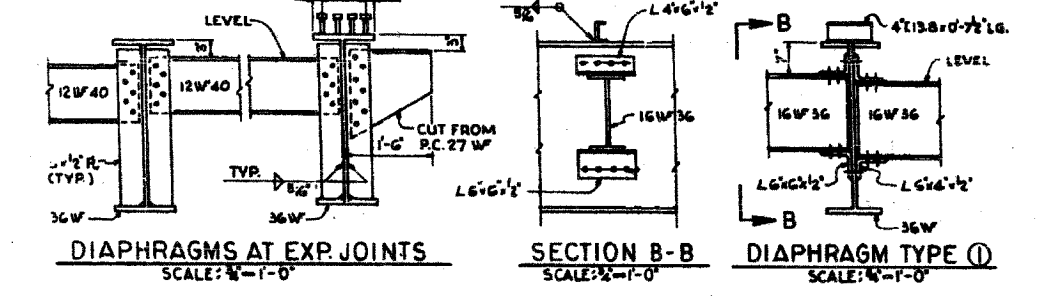
NOTE: ALL DIMENSIONS ARE HORIZONTAL AND ALONG THE CENTERLINE OF BEAM.

GIRDER	A	B	C	D	S1	S2	S3	F	G	R-1	R-2	R-3	R-4	R-5
41	67'-4"	45'-2"	68'-2"	67'-4"	88'-2"	114'-4"	88'-11"	11'-0"	12'-0"	11'-1'-44"	15'-1'-25"	10'-3'-42"	15'-1'-24"	10'-3'-42"
42	66'-7"	45'-12"	68'-11"	67'-4"	88'-2"	114'-3"	88'-10"	12'-6"	14'-6"	10'-1'-47"	15'-1'-25"	10'-3'-42"	15'-1'-24"	10'-3'-41"
43	66'-6"	45'-15"	68'-7"	67'-5"	88'-11"	114'-2"	88'-10"	DO	DO	DO	DO	DO	DO	DO
44	66'-6"	45'-0"	68'-0"	67'-2"	88'-0"	114'-0"	88'-8"	DO	DO	DO	DO	DO	DO	DO
45	66'-6"	45'-0"	68'-0"	67'-2"	88'-0"	114'-0"	88'-8"	DO	DO	DO	DO	DO	DO	DO
46	66'-5"	45'-0"	68'-0"	67'-2"	87'-11"	114'-0"	88'-8"	DO	DO	DO	DO	DO	DO	DO
47	66'-5"	45'-0"	68'-0"	67'-2"	87'-11"	114'-0"	88'-8"	DO	DO	DO	DO	DO	DO	DO
48	66'-5"	45'-0"	68'-0"	67'-2"	87'-11"	114'-0"	88'-8"	DO	DO	DO	DO	DO	DO	DO
49	66'-5"	45'-0"	68'-0"	67'-2"	87'-11"	114'-0"	88'-8"	DO	DO	DO	DO	DO	DO	DO
50	DO	DO	DO	DO	DO	DO	DO	DO	DO	DO	DO	DO	DO	DO
51	DO	DO	DO	DO	DO	DO	DO	DO	DO	DO	DO	DO	DO	DO
52	DO	DO	DO	DO	DO	DO	DO	DO	DO	DO	DO	DO	DO	DO
53	DO	DO	DO	DO	DO	DO	DO	DO	DO	DO	DO	DO	DO	DO
54	DO	DO	DO	DO	DO	DO	DO	DO	DO	DO	DO	DO	DO	DO
55	DO	DO	DO	DO	DO	DO	DO	DO	DO	DO	DO	DO	DO	DO
56	DO	DO	DO	DO	DO	DO	DO	DO	DO	DO	DO	DO	DO	DO
57	DO	DO	DO	DO	DO	DO	DO	DO	DO	DO	DO	DO	DO	DO
58	DO	DO	DO	DO	DO	DO	DO	DO	DO	DO	DO	DO	DO	DO
59	DO	DO	DO	DO	DO	DO	DO	DO	DO	DO	DO	DO	DO	DO
60	66'-5"	45'-0"	68'-0"	67'-2"	87'-11"	114'-0"	88'-8"	DO	DO	DO	DO	DO	DO	DO
61	66'-5"	45'-0"	68'-0"	67'-2"	87'-11"	114'-0"	88'-8"	DO	DO	DO	DO	DO	DO	DO
62	66'-5"	45'-0"	68'-0"	67'-2"	87'-11"	114'-0"	88'-8"	DO	DO	DO	DO	DO	DO	DO
63	66'-5"	45'-0"	68'-0"	67'-2"	87'-11"	114'-0"	88'-8"	DO	DO	DO	DO	DO	DO	DO
64	66'-5"	45'-0"	68'-0"	67'-2"	87'-11"	114'-0"	88'-8"	DO	DO	DO	DO	DO	DO	DO
65	66'-5"	45'-0"	68'-0"	67'-2"	87'-11"	114'-0"	88'-8"	DO	DO	DO	DO	DO	DO	DO
66	66'-5"	45'-0"	68'-0"	67'-2"	87'-11"	114'-0"	88'-8"	DO	DO	DO	DO	DO	DO	DO
67	67'-1"	45'-0"	68'-0"	67'-2"	88'-0"	114'-0"	88'-8"	11'-0"	12'-0"	11'-1'-44"	15'-1'-25"	10'-3'-42"	15'-1'-24"	10'-3'-41"

Designed By: PKV
 Drawn By: H.M.
 Checked By: R.F.P.
 In Charge: N.S.M.L.F.
 Approved By: L.M.R.H.

BOWMAN, BARRETT & ASSOCIATES INC.
 CONSULTING ENGINEERS
 130 EAST RANDOLPH STREET SUITE 2600 CHICAGO, ILLINOIS 60601
 708.300.440

NOTE: ALTERNATE SHEAR CONN. TO BE 3" x 4" CR 1020 STL. GRANULAR OR SOLID FLUX FILLED STUDS AUTOMATICALLY END WELDED.



SUMMARY OF STRUCTURAL STEEL UNIT 2

ITEM	UNIT	QUANTITY	QUANTITY
		ASTM A7	ASTM A7S
BEAMS	POUND	1,539,884	94,513
FILL PLATES & SPLICE PLATES	POUND	109,795	
DIAPHRAGMS	POUND	44,241	
BEARING BEARINGS	POUND	20,782	
		1,615,286	94,513

INCLUDED ON SUMMARY OF UNITS 1 & 2 ON SHT. 81
 DECK EXPANSION DEVICE COMPLETE, IS FURNISHED IN CONTRACT 5-2525-1H
 COST OF INSTALLATION IN CONTRACT 5-2525-2H IS INCIDENTAL TO STRUCTURAL STEEL

GENERAL NOTES
 SEE SHEET S-23 FOR BEARING DETAILS, SPLICE DETAILS, DEAD LOAD DEFLECTIONS AND CAMBER DIAGRAM. SEE SHEET S-24 FOR HIGH STRENGTH BOLTS FOR ALL DIAPHRAGM CONNECTIONS.
 *NOTE: ALL COVER PLATES OVER 1" THICK & ALL W/ BEAMS WITH COVER PLATES OVER 1" THICK ARE TO BE TYPE-A375 STRUCTURAL STEEL, ALL OTHERS A-7.

CITY OF CHICAGO
 DEPARTMENT OF PUBLIC WORKS
 BUREAU OF ENGINEERING
 SOUTH ROUTE SUPERHIGHWAY
 ELEVATED HIGHWAY
 W. 15TH ST. TO W. 15TH ST.
 SECTION 4-2884.3-SH
 STEEL FRAMING PLAN
 UNIT 2
 DE LEUW, CATHY & COMPANY
 CONSULTING ENGINEERS CHICAGO
 SCALE: AS NOTED DATE: AUGUST, 1991
 SHEET S22 OF 56

Sheet S22 of 56

REVISIONS	NAME	DATE

ILLINOIS DEPARTMENT OF TRANSPORTATION
 F.A.I. 94/90 (DAN RYAN EXPRESSWAY)
 FABRICATION CONTRACT
 NB DAN RYAN ELEVATED BRIDGE
 REPAIR FROM 15TH TO 28TH STREETS
 EXISTING PLAN INFORMATION SN 016-1110
 SCALE: NTS
 DATE: 5/23/2005
 DRAWN BY: BOC
 CHECKED BY: BLU

FOR INFORMATION ONLY

5/23/2005 9:28:59 AM