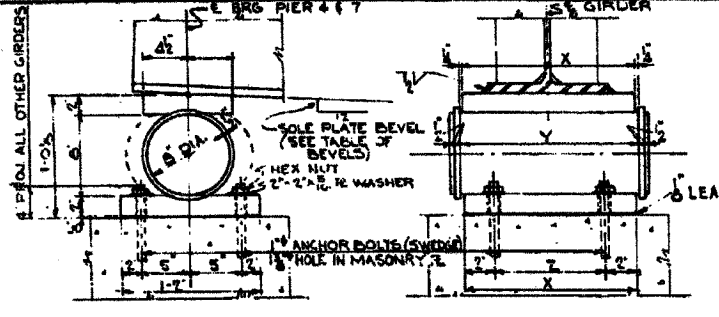
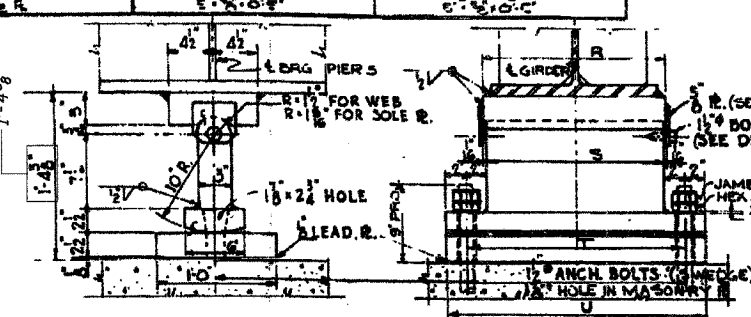


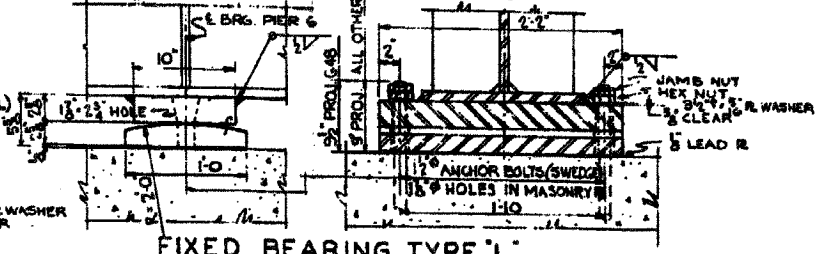
MATERIAL	TYPE F (6 REQD)	TYPE G (4 REQD)	TYPE H (7 REQD)	MATERIAL	TYPE J (3 REQD)	TYPE K (24 REQD)	MATERIAL	TYPE L (27 REQD)
SOLE PLATE	3" x 24" x 1/2"	3" x 24" x 1/2"	3" x 24" x 1/2"	SOLE PLATE	3" x 24" x 1/2"	3" x 24" x 1/2"	SOLE PLATE	3" x 24" x 1/2"
ANCHOR BOLTS	2" x 24" x 1/2"	2" x 24" x 1/2"	2" x 24" x 1/2"	ANCHOR BOLTS	2" x 24" x 1/2"	2" x 24" x 1/2"	ANCHOR BOLTS	2" x 24" x 1/2"
WASHERS	2" x 24" x 1/2"	2" x 24" x 1/2"	2" x 24" x 1/2"	WASHERS	2" x 24" x 1/2"	2" x 24" x 1/2"	WASHERS	2" x 24" x 1/2"



EXPANSION BEARING - TYPE F, G & H
SCALE: 1/2" = 1'-0"



EXPANSION BEARING TYPE J & K
SCALE: 1/2" = 1'-0"



FIXED BEARING TYPE L
SCALE: 1/2" = 1'-0"

	R	S	T	U
TYPE J	1'10"	1'10"	2'2"	2'6"
TYPE K	1'6"	1'6"	1'10"	2'2"

LOCATION	GIRDER NUMBER					
	41	48	50	55	59	67
PIER NO. 4						
PIER NO. 6						
PIER NO. 7						
TOTAL WEIGHT OF FILL PLATES = 234 LBS.						

LOCATION	GIRDER NUMBER					
	41	48, 50, 55	54	55, 59, 66	67	
PIER NO. 4	5	3	5	5	5	
PIER NO. 7	0	5	3	5	5	

BEARING TYPE	NUMBER REQUIRED	WT. OF STEEL PER BEARING, LBS.	TOTAL STEEL LBS.
F	6	648	3,888
G	41	560	22,960
H	7	475	3,325
J	3	780	2,370
K	24	676	16,224
L	27	465	12,555
LESS ANCHOR BOLTS AT PIER 7			- 540 LBS.
TOTAL WEIGHT OF BEARINGS = 60,782 LBS.			

NOTE:
MATERIAL INCLUDED IN WEIGHT ON SHT. 522
ROCKER R AND WEB R FOR EXPANSION BRG TYPES J & K CAN BE
GRADE 65-35 CARBON STEEL CASTING.
FLANGE SPLICES — 3/8" HIGH STRENGTH BOLTS.
WEB SPLICES — 3/8" HIGH STRENGTH BOLTS.
ANCHOR BOLTS AT PIER 7 PROVIDED IN CONTRACT S2525-1 H.

CITY OF CHICAGO
DEPARTMENT OF PUBLIC WORKS
BUREAU OF ENGINEERING
SOUTH ROUTE SUPERHIGHWAY
ELEVATED HIGHWAY
W. 16TH ST. TO W. 15TH ST.
SECTION 8-2525.3-2H
BEARINGS & SPLICE DETAILS
UNIT 2

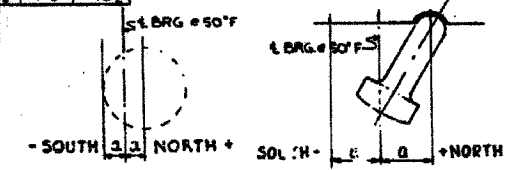
DE LEUW, GATHER & COMPANY
CONSULTING ENGINEERS

SHEET S23 OF 56

REVISIONS	
NAME	DATE

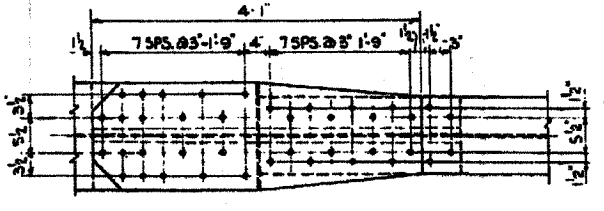
ILLINOIS DEPARTMENT OF TRANSPORTATION
F.A.I. 94/90 (DAN RYAN EXPRESSWAY)
FABRICATION CONTRACT
NB DAN RYAN ELEVATED BRIDGE
REPAIR FROM 15TH TO 28TH STREETS
EXISTING PLAN INFORMATION SN 016-1110
SCALE: NTS
DATE: 5/23/2005
DRAWN BY: BDC
CHECKED BY: BLU

TYPE F	Y	Z
TYPE G	1'9"	1'4"
TYPE H	1'6"	1'1"
TYPE J	1'9"	1'0"

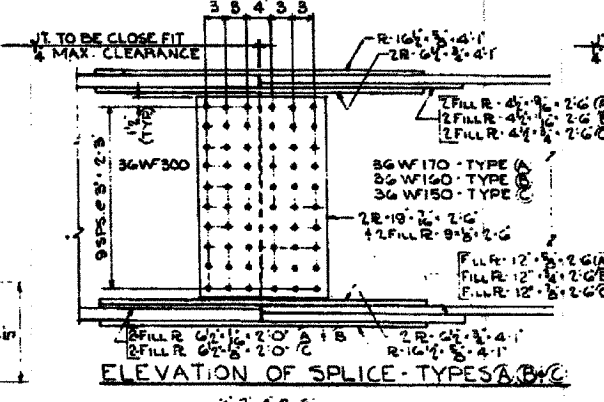


EXP BRG TYPE F, G & H EXP BRG TYPE J & K

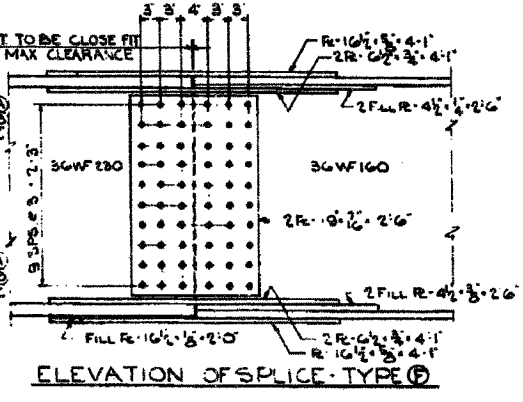
EXP BRG TYPE	PIER #	110'	90'	70'	50'	30'	10'
TYPE F, G, H	PIER #4	-1/8"	-1/8"	-1/8"	0	0	0
TYPE J, K	PIER #7	+1/8"	+1/8"	+1/8"	0	0	0
TYPE J, K	PIER #5	-1/8"	-1/8"	-1/8"	0	0	0



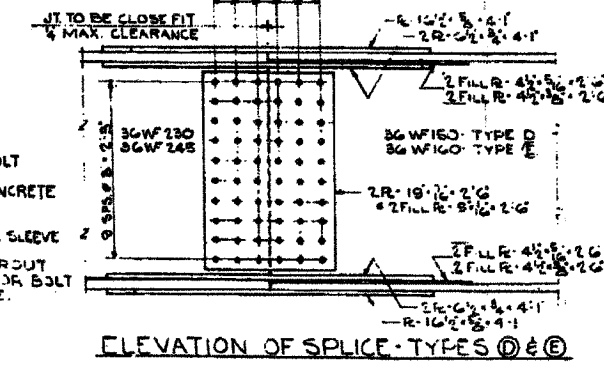
TOP VIEW OF SPLICE - TYPICAL



ELEVATION OF SPLICE - TYPES A, B, & C

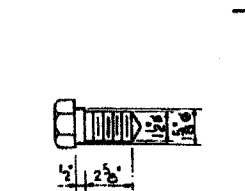


ELEVATION OF SPLICE - TYPE D

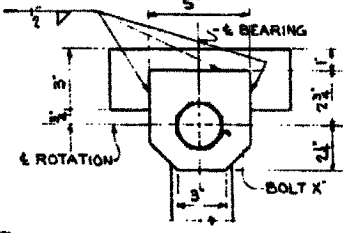


ELEVATION OF SPLICE - TYPES E & F

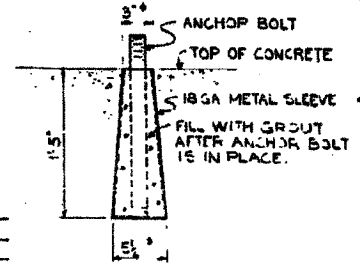
SPLICE TYPE	NUMBER REQUIRED	WT. OF STEEL PER SPLICE, LBS.	TOTAL STEEL LBS.
A	2	997	1,994
B	3	1,020	3,060
C	3	1,043	3,129
D	83	922	76,526
E	4	931	3,724
F	13	926	12,038
TOTAL WEIGHT OF SPLICES			= 100,471 LBS.



DETAIL - BOLT X
SCALE: 3" = 1'-0"



DETAIL - F PLATE
SCALE: 3" = 1'-0"



ANCHOR BOLT SETTING

Des. By N.S.W.
Dwn. By W.C.K.
Chk. By R.S.
In. By N.S.WULF
App. By L.N.RIAN

BOWMAN, BARKETT & ASSOCIATES INC.
CONSULTING ENGINEERS
111 EAST HANCOCK STREET SUITE 1200 CHICAGO, ILLINOIS 60601
312.557.1100

SCALES OF TRACING
1/4" = 1'-0" 1/8" = 1'-0"

FOR INFORMATION ONLY