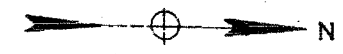
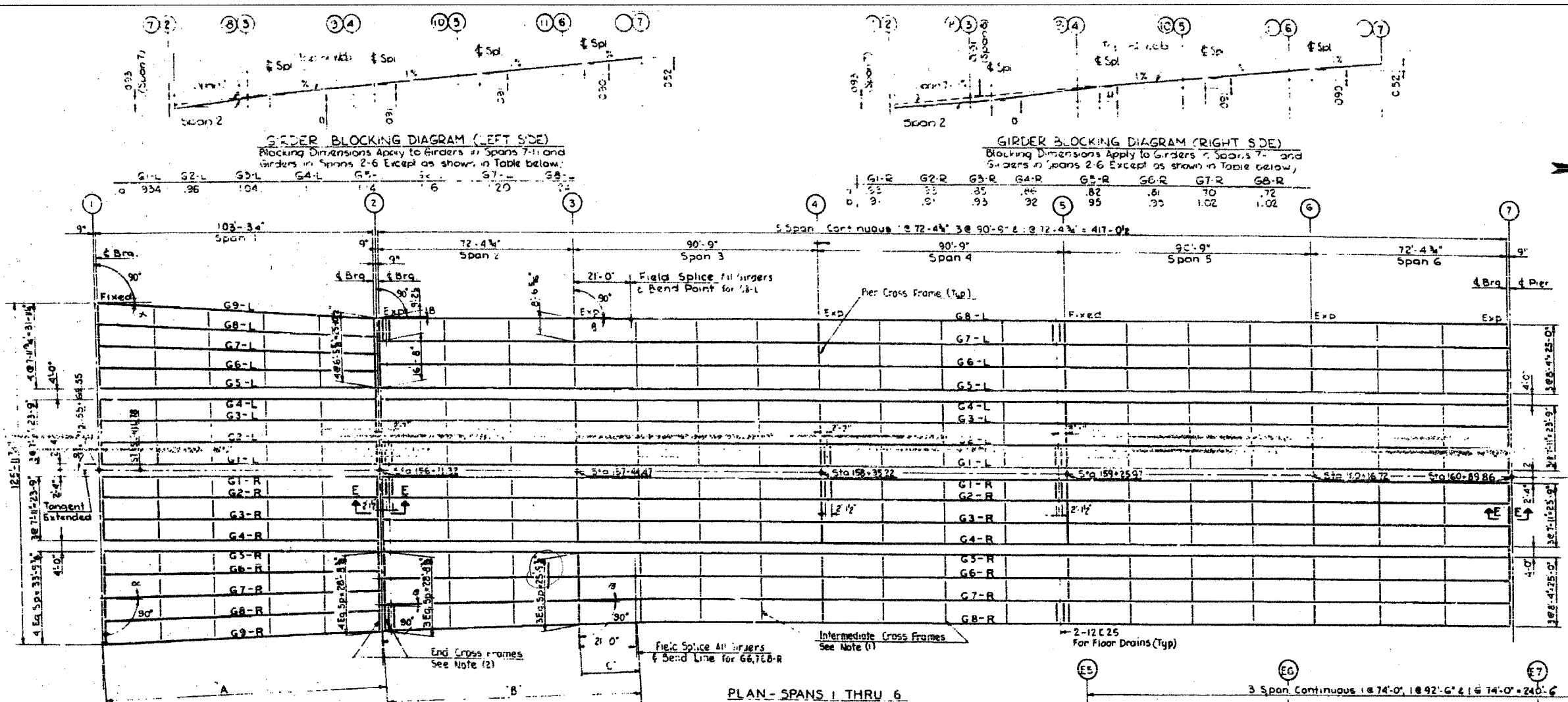
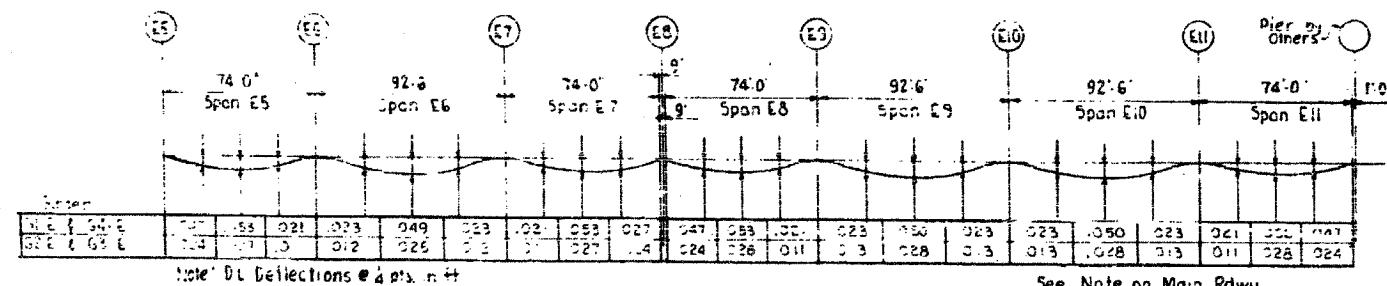
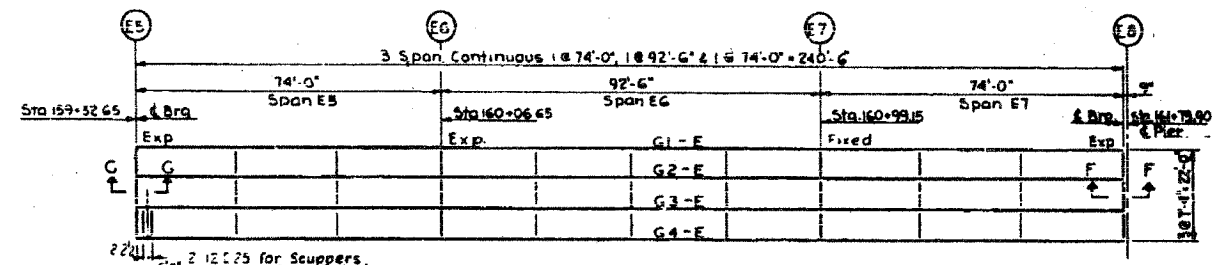


F.A.I.	SECTION	COUNTY	TOTAL SHEETS	SHEET NO.
94/90	2005-00BF	COOK	93	83
STA.	TO STA.			
FED. ROAD DIST. NO.	ILLINOIS	FED. AID PROJECT		
62919				



- NOTES**
- Intermediate cross frames to be located above Piers for continuous spans & between piers of all spans at approximate 3, 4 or 5 points as indicated in plan. Maximum spacing to be 25'. See Stiffener spacing dimensions.
  - End cross frames to be located at free ends of all girders, simple & continuous spans.
- See Expansion Guard Details Sheets for Sections E, F & G

DIMENSIONS OF FANED GIRDERS					
SPAN 1			SPAN 2 & 3		
Girder	Distance A	Angle	Girder	Distance B	Angle
G5-L	104-94	0° 00' 00"	G7-L	94-12	21° 0'
G6-L	104-96	0° 39' 42"	G8-L	94-11	21° 5'
G7-L	104-93	1° 39' 24"	G5-R	94-12	21° 0'
G8-L	104-100	2° 29' 02"	G6-R	94-11	21° 5'
G9-L	104-111	3° 18' 31"	G7-R	94-21	21° 5'
G3-R	102-94	0° 00' 00"	G8-R	94-22	21° 5'
G6-R	104-94	0° 42' 05"			
G7-R	104-96	1° 24' 10"			
G8-R	104-100	2° 36' 13"			
G9-R	104-108	2° 48' 13"			



SPANS E5 THRU E11  
RAMP E DEAD LOAD DEFLECTIONS  
FOR INFORMATION ONLY

CITY OF CHICAGO  
DEPARTMENT OF PUBLIC WORKS  
BUREAU OF ENGINEERING  
SOUTH ROUTE SUPERHIGHWAY  
SECTION NO. 12-1828-S-3H  
W. 156th STREET TO W. 158th STREET  
**FRAMING PLAN**  
CONSOKER, TOWNSEND & ASSOCIATES  
CONSULTING ENGINEERS  
CHICAGO, ILLINOIS  
DESIGNED BY RLF  
DRAWN BY M.L.  
SCALE:  
CHECKED BY HSM  
IN CHARGE OF HSM  
DATE: AUG. 1991  
SHEET NO. 3-20 OF 82

REVISIONS	NAME	DATE

ILLINOIS DEPARTMENT OF TRANSPORTATION  
F.A.I. 94/90 (DAN RYAN EXPRESSWAY)  
FABRICATION CONTRACT  
NB DAN RYAN ELEVATED BRIDGE  
REPAIR FROM 15TH TO 28TH STREETS  
EXISTING PLAN INFORMATION SN 016-1111  
SCALE: NTS  
DATE: 5/23/2005  
DRAWN BY: BDC  
CHECKED BY: BLU

BOWMAN, BARRETT & ASSOCIATES INC.  
CONSULTING ENGINEERS  
100 EAST BARRINGTON STREET SUITE 2024 CHICAGO, ILLINOIS 60611  
312.321.1111