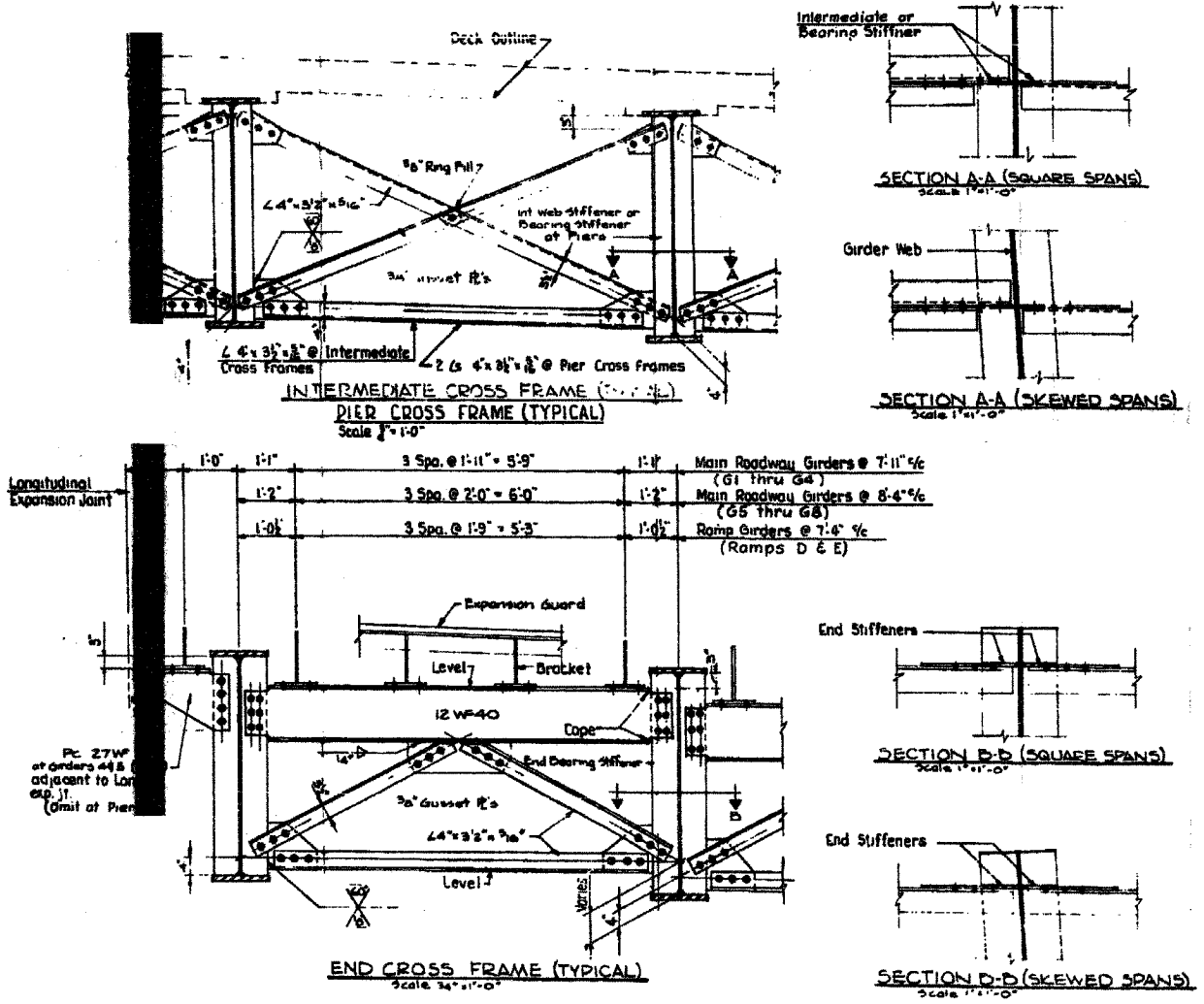


n:\650\cadd\p14\p14.dgn

5/23/2005 9:27:22 AM



CROSS FRAME DETAILS

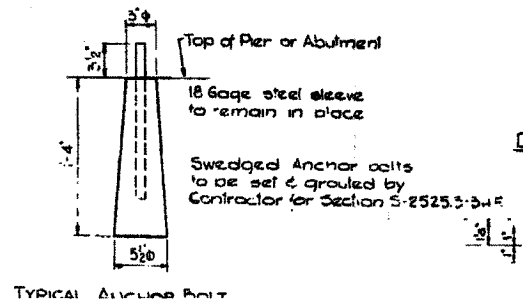
NOTES

Expansion Guard bracket spacings shown are typical at locations where girders are parallel.

Dimensions to be adjusted by detailer where girders are formed. Hold bracket spacings to 23" max.. See Framing Plans for 5/8" dimensions of tapered girders.

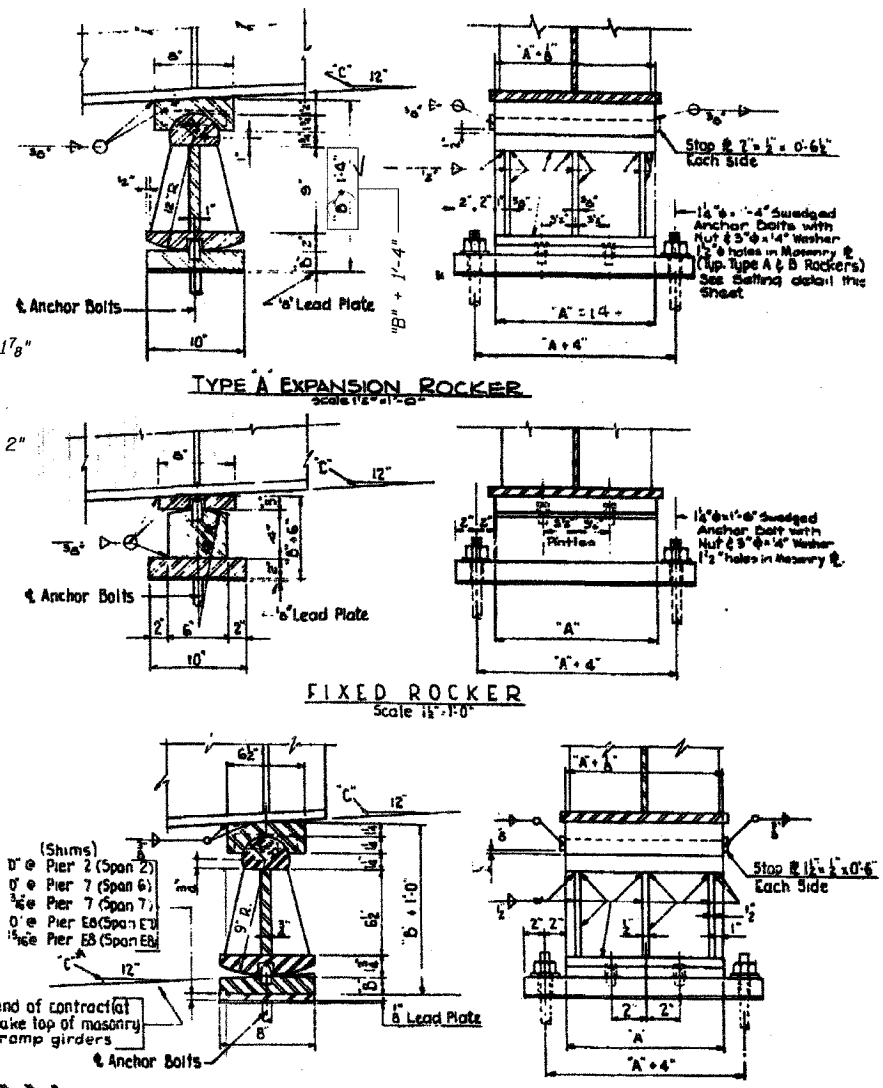
Special bracket spacing dimensions to be used at north end of contract to meet expansion guard supplied by others. See Expansion Guard Details Sheet S-27

Intermediate Cross Frames and End Cross Frames shown are typical for simple spans & continuous spans. Pier cross frames typical are at interior piers of continuous spans. See Framing Plans & Girder Details for girder dimensions & spacings.

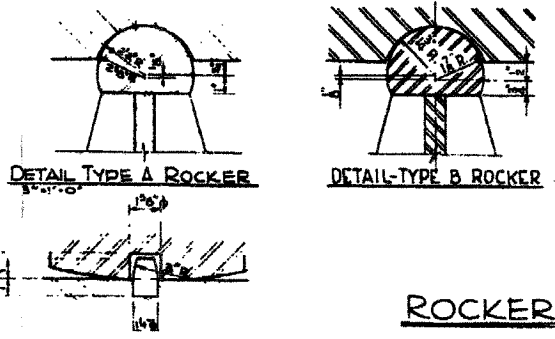


ROCKER SCHEDULE

Girder	Type	"A"	"B"	"C"
PIER 1- SPAN 1				
G1- L&R	Fixed	10"	11 1/2"	1 1/2"
G2,3- L&R	Fixed	10"	11 1/2"	1 1/2"
G4,5- L&R	Fixed	10"	11 1/2"	1 1/2"
G6-9- L&R	Fixed	10"	11 1/2"	1 1/2"
PIER 2- SPAN 2				
G1- L&R	B	11"	12 1/2"	1 1/2"
G2,3- L&R	B	11"	11 1/2"	1 1/2"
G4,5- L&R	B	11"	11 1/2"	1 1/2"
G6-9- L&R	B	11"	11 1/2"	1 1/2"
PIER 2- SPAN 2				
G1- L&R	B	10"	11 1/2"	1 1/2"
G2,3- L&R	B	10"	11 1/2"	1 1/2"
G4,5- L&R	B	10"	11 1/2"	1 1/2"
G6-9- L&R	B	10"	11 1/2"	1 1/2"
PIERS 3,4,5,8,9 & 11				
G1- L&R	A	11"	12 1/2"	1 1/2"
G2,3- L&R	A	15"	11 1/2"	1 1/2"
G4,5- L&R	A	12"	11 1/2"	1 1/2"
G6-9- L&R	A	14"	11 1/2"	1 1/2"
PIER 7 & PIER BY OTHERS				
G1- L&R	B	10"	11 1/2"	1 1/2"
G2,3- L&R	B	10"	11 1/2"	1 1/2"
G4,5- L&R	B	10"	11 1/2"	1 1/2"
G6-9- L&R	B	10"	11 1/2"	1 1/2"
RAMP E				
ABUTMENT E5 & PIER BY OTHERS				
All Girders	B	10"	11 1/2"	1 1/2"
PIERS E6, E9, E11				
All Girders	A	14"	13 1/2"	1 1/2"
PIERS E7, E8, E10				
All Girders	Fixed	14"	13 1/2"	1 1/2"
PIER E8				
All Girders	B	10"	11 1/2"	1 1/2"
RAMP D				
ABUTMENT D7 & PIER BY OTHERS				
All Girders	B	10"	11 1/2"	1 1/2"
PIER D8, D9, & D11				
All Girders	A	14"	13 1/2"	1 1/2"
PIER D10				
All Girders	Fixed	14"	13 1/2"	1 1/2"



* Note: At North end of contract (at Pier by Others) make top of masonry plate level, all ramp girders



ROCKER DETAILS

FOR INFORMATION ONLY

BOWMAN, BARRETT & ASSOCIATES INC.
CONSULTING ENGINEERS
135 EAST RANDOLPH STREET SUITE 2450 CHICAGO, ILLINOIS 60601
312.467.1400

Sheet S24 of 82

REVISIONS	
NAME	DATE

CITY OF CHICAGO
DEPARTMENT OF PUBLIC WORKS
BUREAU OF ENGINEERING
SOUTH ROUTE SUPERHIGHWAY
SECTION NO. S-2525.3-34F
W. 15th STREET TO W. 18th STREET
CROSS FRAMES & ROCKERS
CONSOER, TOWNSEND & ASSOCIATES
CONSULTING ENGINEERS
CHICAGO, ILLINOIS
DESIGNED BY RLF CHECKED BY
DRAWN BY IN CHARGE OF HSM

ILLINOIS DEPARTMENT OF TRANSPORTATION
F.A.I. 94/90 (DAN RYAN EXPRESSWAY)
FABRICATION CONTRACT
NB DAN RYAN ELEVATED BRIDGE
REPAIR FROM 15TH TO 28TH STREETS
EXISTING PLAN INFORMATION SN 016-1111
SCALE: NTS DRAWN BY: BDC
DATE: 5/23/2005 CHECKED BY: BLU