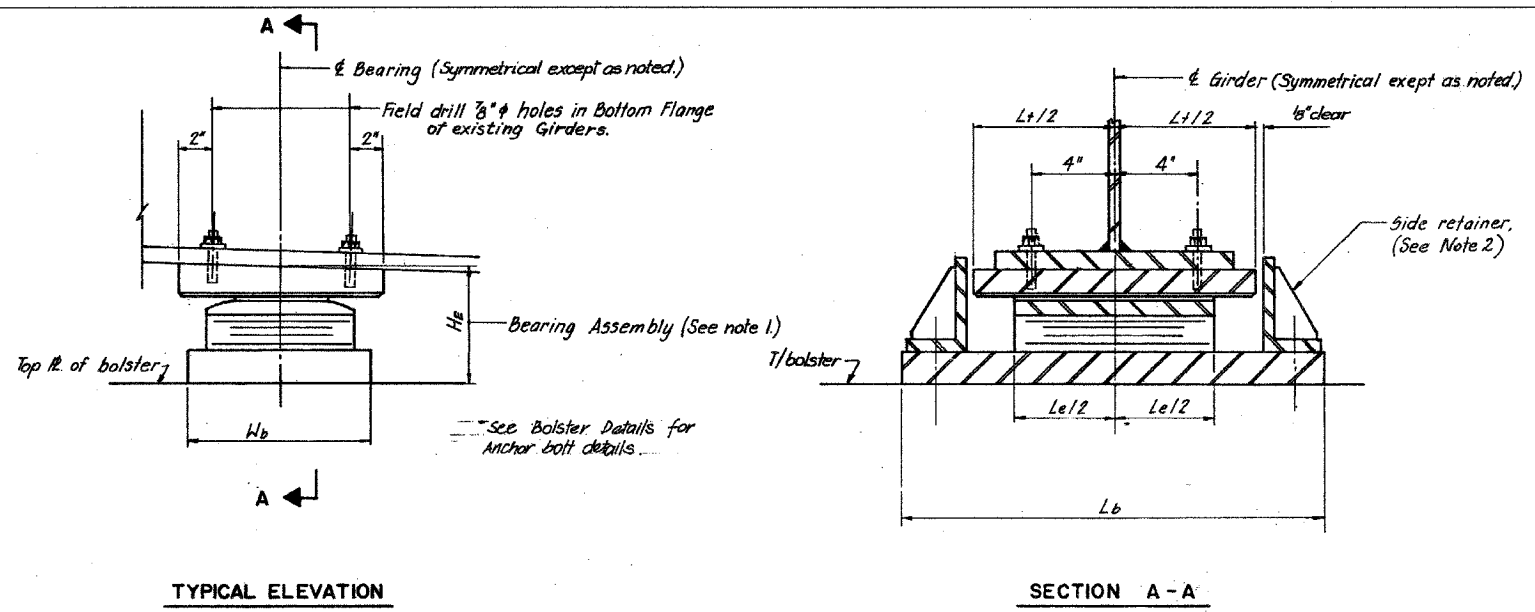


F.A.I.	SECTION	COUNTY	TOTAL SHEETS	SHEET NO.
94/90	2005-008F	COOK	93	92
STA.		TO STA.		
FED. ROAD DIST. NO.	ILLINOIS	FED. AID PROJECT		
62919				

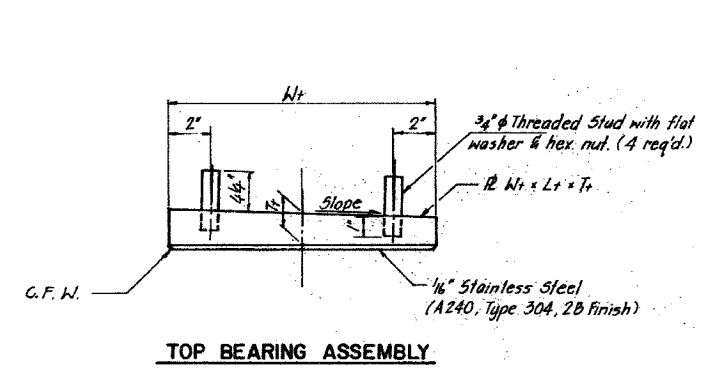


TYPE II ELASTOMERIC EXPANSION BEARING SCHEDULE

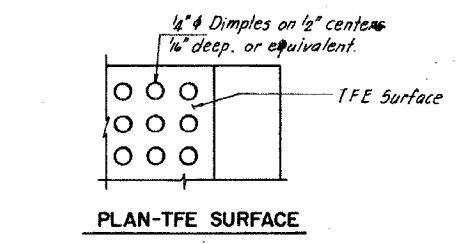
STRUCTURE NO.	PIER LOCATION	GIRDER NO.	We	Le	SERIES	TOP PLATE			BOTTOM PLATE			NO. REQ'D.	He	REMARKS	
						Tt	Wt	Lt	SLOPE	Tb	Wb				Lb
016-1116	1	GN-2 thru GN-4	20	30	a	4/2	22	32	0.0	1	21	40/2	3	-	N, B, ●

TYPE II TFE ELASTOMERIC EXPANSION BEARING

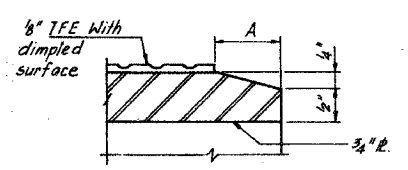
Remarks:
 B - Bolster required - See bolster details.
 N - New bearings for roadway widening.
 ● - See bolster schedule for He dimension.



TOP BEARING ASSEMBLY



PLAN-TFE SURFACE



SECTION THRU TFE

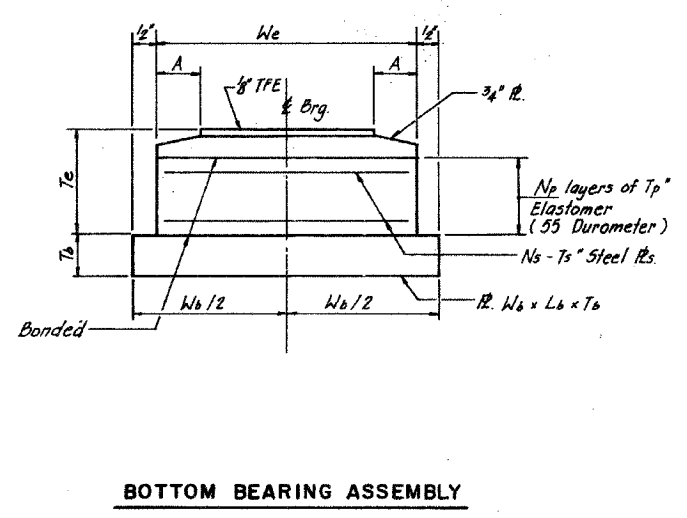
Note: The 1/8" TFE sheet shall be bonded directly to the top steel plate with a two-component, medium viscosity epoxy resin, conforming to the requirements of the Federal Specification MMM-A-134, Type I. The bond agent shall be applied on the full area of the contact surface.

Bonding of 1/8" TFE sheet during vulcanizing process will be permitted provided the process and method of adjusting assembly height is approved by the Engineer.

TABLE OF DIMENSIONS - TYPE II ELASTOMERIC EXPANSION BEARINGS

We	Le	Series	Tp	Np	Ts	Ns	Te
20'	30'	A	3/4"	4"	1/4"	5"	4 5/8"

Tp - denotes thickness of each elastomeric layer
 Np - denotes number of elastomeric layers
 Ts - denotes thickness of each steel plate
 Ns - denotes number of steel plates



BOTTOM BEARING ASSEMBLY

We	6"	7"	9"	10"	11"	12"
A	1"	1 1/2"	1 1/2"	1 1/2"	1 1/2"	1 1/2"

- NOTES:**
- Height of bearing assembly, He, includes top plate, elastomeric assy. and bottom plate. He does not include shim plate.
 - Side retainer details for bearings located on top of pier are shown on this sheet. For bearings requiring a bolster, see bolster details for side retainer details.
 - See Shim thickness schedule for required shims.

FOR INFORMATION ONLY

ALL MATERIALS SHOWN ON THIS SHEET ARE FURNISHED UNDER A SEPARATE SUPPLY CONTRACT (SECTION 1988-004 I), UNLESS NOTED OTHERWISE.

SHEET BRG 32 OF 51

STATE OF ILLINOIS
 DEPARTMENT OF TRANSPORTATION
 EAST ROUTE 90/94 (DAN RYAN EXPRESSWAY)
 SECTION 1988-004 I - COOK COUNTY
 NB MAINLINE RECONSTRUCTION
 BEARINGS - STRUCTURE NO. 016-1116
 TYPE II ELASTOMERIC EXPANSION BEARING

Scale: NONE
 Date: AUGUST, 1998
 Drawn By: D.C.
 Checked By: A.C.S.
 EDWARDS ENGINEERS INC.
 Chicago, Illinois

ILLINOIS DEPARTMENT OF TRANSPORTATION
 F.A.I. 94/90 (DAN RYAN EXPRESSWAY)
 FABRICATION CONTRACT
 NB DAN RYAN ELEVATED BRIDGE
 REPAIR FROM 15TH TO 28TH STREETS
 EXISTING PLAN INFORMATION SN 016-1116

SCALE: NTS
 DATE: 5/23/2005
 DRAWN BY: BDC
 CHECKED BY: BLU

BOWMAN, BARRETT & ASSOCIATES INC.
 CONSULTING ENGINEERS
 138 EAST BARRINGTON STREET SUITE 2656 CHICAGO, ILLINOIS 60641
 JOB NO. 660

15:660\code\brg\13a\sheet1560_13a_ep120.dgn 5/23/2005 9:27:45 AM