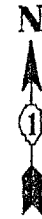
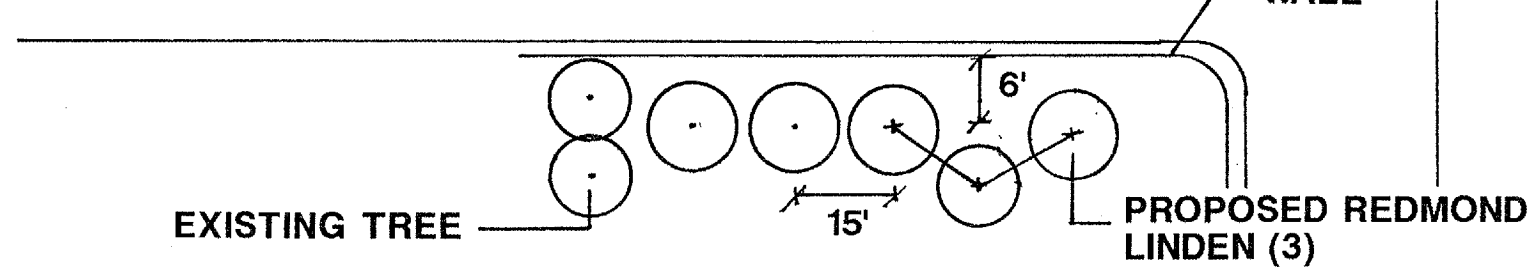


ROUTE	SECTION	COUNTY	TOTAL SHEETS	SHEET NUMBER
VARIOUS	2005-021LS	VARIOUS	25	14

CONTRACT 62950



OB DES PLAINES AVE ENTRANCE RAMP

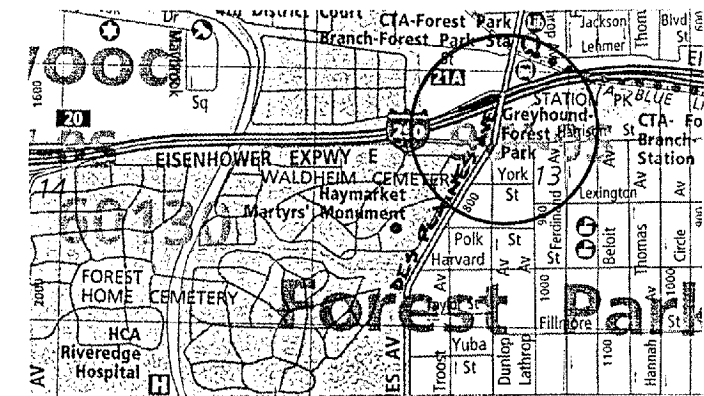


← OB EISENHOWER, I-290 WEST

DES PLAINES AVE.

PLANT TREES 15' O.C., STAGGERED

GENERAL LOCATION MAP



COUNTY: COOK
CLAIM #: 711812

713638

CITY/TOWN: PROVISO

SCHEDULE OF LANDSCAPE ITEMS

DESCRIPTION	QTY/UNIT
TILIA AMERICANA 'REDMOND' (REDMOND AMERICAN LINDEN)	3 EACH

ILLINOIS DEPARTMENT OF TRANSPORTATION
LANDSCAPE REPAIR LOCATION AND LAYOUT PLAN