

F.A.P. RTE.	SECTION	COUNTY	TOTAL SHEETS	SHEET NO.
346	124 N	LAKE	20	1

STATE OF ILLINOIS  
DEPARTMENT OF TRANSPORTATION  
DIVISION OF HIGHWAYS

# PROPOSED HIGHWAY PLANS

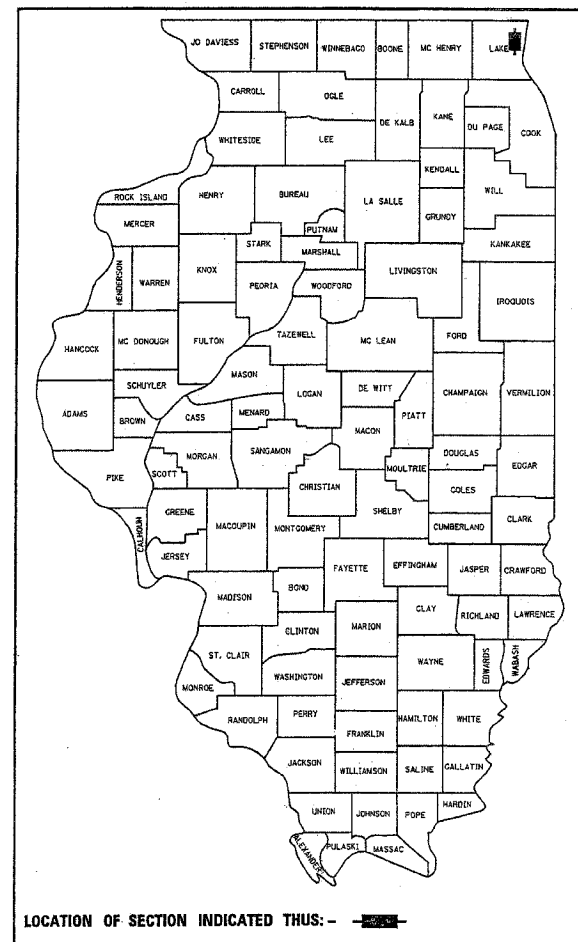
F.A.P 346:US ROUTE 41  
AT IL 173 (WEIGH STATION)  
SECTION: 124 N  
AUXILIARY LANE ADDITION  
LAKE COUNTY  
C-91-207-05

FOR INDEX OF SHEETS, SEE SHEET NO. 2

THIS IMPROVEMENT IS LOCATED IN  
THE VILLAGE OF WADSWORTH

FINAL PLANS

D-91-207-05



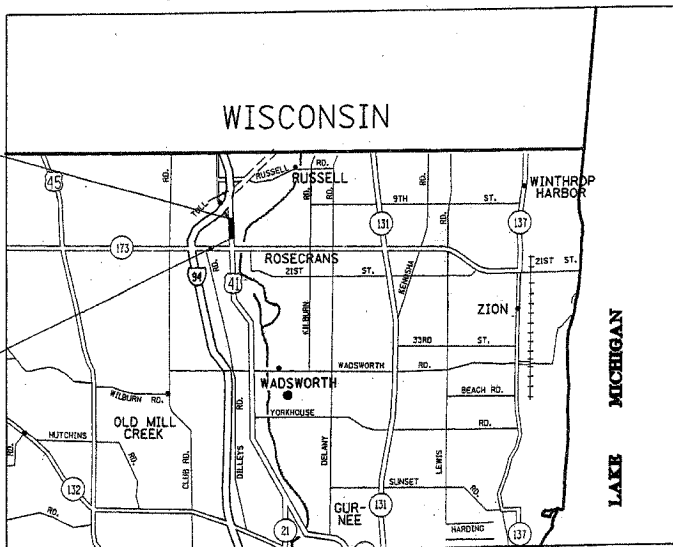
LOCATION OF SECTION INDICATED THIS: - [Symbol] -

TRAFFIC DATA

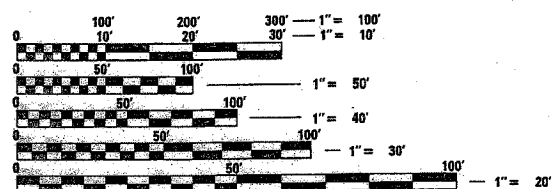
IL RTE. 41: 2003 ADT= 26000  
POSTED SPEED LIMIT= 45 MPH

IMPROVEMENT ENDS  
STA. 124+62.61

IMPROVEMENT BEGINS  
STA. 113+00



NEWPORT TOWNSHIP



FULL SIZE PLANS HAVE BEEN PREPARED USING STANDARD  
ENGINEERING SCALES. REDUCED SIZED PLANS WILL NOT  
CONFORM TO STANDARD SCALES. IN MAKING MEASUREMENTS  
ON REDUCED PLANS, THE ABOVE SCALES MAY BE USED.

J.U.L.I.E.  
JOINT UTILITY LOCATION INFORMATION FOR EXCAVATION  
1-800-892-0123

GROSS AND NET LENGTH OF IMPROVEMENT = 1162.61 FT = .22 MILES

STATE OF ILLINOIS  
DEPARTMENT OF TRANSPORTATION  
DIVISION OF HIGHWAYS

SUBMITTED June 6, 20 05

Dina O'Keefe / AP  
DEPUTY DIRECTOR OF HIGHWAYS, REGION ENGINEER

July 1, 20 05  
Mike Stene / RD  
ENGINEER OF DESIGN AND ENVIRONMENT

July 1, 20 05  
Victor Modun / RD  
DIRECTOR OF HIGHWAYS, CHIEF ENGINEER

PRINTED BY THE AUTHORITY  
OF THE STATE OF ILLINOIS

DISTRICT ONE DESIGN PLAN PREPARATION ENGINEER:  
KEN ENG/ISSAM RAYYAN (847) 705-4240

CONTRACT NO. 62954

F.A.P. RTE.	SECTION	COUNTY	TOTAL SHEETS	SHEET NO.
346	124 N	LAKE	19	2
STA.	TO STA.			
FED. ROAD DIST. NO.	ILLINOIS	FED. AID PROJECT		

CONTRACT NO. 62954

GENERAL NOTES

BEFORE STARTING ANY EXCAVATION, THE CONTRACTOR SHALL CALL "JULIE" AT 800-892-0123 FOR FIELD LOCATIONS OF BURIED ELECTRIC, TELEPHONE AND GAS FACILITIES. (48 HOUR NOTIFICATION IS REQUIRED)

THE CONTRACTOR SHALL COORDINATE CONSTRUCTION ACTIVITIES WITH UTILITY COMPANIES AND THE VILLAGES OF LEMONT

THE CONTRACTOR WILL NOT BE ALLOWED TO SET UP A YARD OR FIELD OFFICE ON STATE PROPERTY WITHOUT WRITTEN PERMISSION FROM THE DEPARTMENT.

WHEN MILLED PAVEMENT IS OPEN TO TRAFFIC THE MAXIMUM GRADE DIFFERENTIAL BETWEEN PASSES OF THE MILLING MACHINE SHALL NOT EXCEED 40 MM (1 1/2 INCHES) WHERE THE SPEED LIMIT IS 80 KM/H (45 MPH) OR LESS AND 25 MM (1 INCH) WHERE THE SPEED LIMIT IS GREATER THAN 80 KM/H (45 MPH). WITH WRITTEN APPROVAL FROM THE ENGINEER, A MAXIMUM GRADE DIFFERENTIAL OF 75 MM (3 INCHES) MAY BE ALLOWED IF THE EDGE OF THE MILLING IS SLOPED A MINIMUM 1:3 (V:H).

BUTT JOINTS WILL BE INSTALLED AT THE ENDS OF ALL RESURFACING (WHERE RESURFACING MEETS EXISTING PAVEMENT), IN ACCORDANCE WITH THE "BUTT JOINT AND BITUMINOUS TAPER DETAILS" SHEET INCLUDED IN THE PLANS, UNLESS OTHERWISE SPECIFIED.

UNLESS OTHER CONDITIONS WARRANT EXTENDED LANE CLOSURE AS DETERMINED AND APPROVED IN WRITING BY THE ENGINEER OR AS PROVIDED FOR IN THE CONTRACT SPECIFICATIONS, OVERNIGHT CLOSURES SHALL NOT BE ALLOWED FOR REHABILITATION PROJECTS INVOLVING DAYTIME MILLING AND RESURFACING OPERATIONS AND CLASS D PATCHING.

PRIOR TO EMBANKMENT PLACEMENT, ALL VEGETATION, LOOSE MATERIAL, AND UNSTABLE MATERIAL SHALL BE REMOVED TO DEPTH ENCOUNTERED AND REPLACED WITH SUITABLE EMBANKMENT MATERIAL. ANY EMBANKMENT WIDENING ON EXISTING SLOPES SHALL BE BENCHED IN ACCORDANCE WITH ARTICLE 205.04 OF THE STANDARD SPECIFICATIONS FOR ROAD AND BRIDGE CONSTRUCTION.

ALL PAVEMENT MARKING SHALL BE PLACED THROUGHOUT THE IMPROVEMENT ACCORDING TO DISTRICT 1 TYPICAL PAVEMENT MARKING

ON STATE STANDARDS 482001 AND 483001 AGGREGATE SUBGRADE 300 MM (12") SHALL BE USED AS THE IMPROVED SUBGRADE. THE ADDITIONAL THICKNESS OF AGGREGATE SUBGRADE UNDER THE SHOULDER SHALL BE INCLUDED IN THE COST PER SQUARE METER (SQ YARD) OF AGGREGATE SUBGRADE 300 MM (12")

THE RESIDENT ENGINEER SHALL CONTACT MS. DEBBIE HANLON AREA TRAFFIC FIELD TECHNICIAN AT (847) 438-2300 A MINIMUM OF 2 WEEKS PRIOR TO PLACEMENT OF PERMANENT PAVEMENT MARKING.

THE RESIDENT ENGINEER SHALL VERIFY THE LOCATIONS OF ALL EXISTING PAVEMENT MARKING PRIOR TO MILLING OR RESURFACING.

INDEX OF SHEETS

SHEET NO.	DESCRIPTION
1	COVER SHEET
2	INDEX OF SHEETS, STANDARDS AND GENERAL NOTES
3	SUMMARY OF QUANTITIES
4	TYPICAL SECTION
5	SCHEDULE OF QUANTITIES
6	SUGGESTED MAINTAINANCE OF TRAFFIC PLAN
7-8	EXISTING AND PROPOSED ROADWAY & EROSION CONTROL PLANS
9	PAVEMENT MARKING PLAN
*10-17	DISTRICT DETAILS
18-19	CROSS SECTIONS

\* INCLUDES 12A.

LIST OF STATE STANDARDS

STD. NO.	DESCRIPTION
280001-02	TEMPORARY EROSION CONTROL SYSTEMS
482001	BITUMINOUS SHOULDER ADJACENT TO FLEXIBLE PAVEMENT
606001-02	CONCRETE CURB TYPE B AND COMBINATION CONCRETE CURB AND GUTTER
630001-05	STEEL PLATE BEAM GUARDRAIL
630101-05	GUARDRAIL MOUNTED ON EXISTING CULVERTS
630201-03	PCC/BITUMINOUS STABILIZATION AT STEEL PLATE BEAM GUARDRAIL
631011-02	TRAFFIC BARRIER TERMINAL, TYPE 2
631031-05	TRAFFIC BARRIER TERMINAL, TYPE 6
635006-02	REFLECTOR AND TERMINAL MARKER PLACEMENT
701411-03	LANE CLOSURE, MULTILANE AT ENTRANCE OR EXIT RAMP FOR SPEED ≥ 45 MPH
701422-01	LANE CLOSURE, MULTILANE, FOR SPEED ≥ 45 MPH TO 55 MPH
702001-05	TRAFFIC CONTROL DEVICES
720001	SIGN PANEL MOUNTING DETAILS
720006	SIGN PANEL ERECTION DETAILS.
780001-01	TYPICAL PAVEMENT MARKINGS
601001	SUB-SURFACE DRAINS

REVISIONS		ILLINOIS DEPARTMENT OF TRANSPORTATION F.A.P. 346 (IL RTE. 41) @ IL 173 INDEX OF SHEETS, STANDARDS, AND GENERAL NOTES
NAME	DATE	
		SCALE: VERT. HORIZ. DATE

Rev.

DRAWN BY

PLOT DATE = 6/8/2005  
FILE NAME = c:\projects\100000005\consult\18\c81.tsp-sec.dgn  
PLOT SCALE = 50.0000 / IN.  
USER NAME = adabana

62954

SUMMARY OF QUANTITIES			TOTAL QUANTITIES	URBAN CONSTRUCTION TYPE CODE				
CODE NO	ITEM	UNIT		100 %				
				STATE				
			I000-2A					
20200100	EARTH EXCAVATION	CU YD	1313	1313				
20201200	REMOVAL AND DISPOSAL OF UNSUITABLE MATERIAL	CU YD	113	113				
21001000	GEOTECHNICAL FABRIC FOR GROUND STABILIZATION	SQ YD	715	715				
21101625	TOPSOIL FURNISH AND PLACE, 6"	SQ YD	665	665				
25000210	SEEDING, CLASS 2A	ACRE	0.14	0.14				
25000400	NITROGEN FERTILIZER NUTRIENT	POUND	13	13				
25000500	PHOSPHORUS FERTILIZER NUTRIENT	POUND	13	13				
25000600	POTASSIUM FERTILIZER NUTRIENT	POUND	13	13				
25100630	EROSION CONTROL BLANKET	SQ YD	678	678				
28000300	TEMPORARY DITCH CHECKS	EACH	2	2				
40600200	BITUMINOUS MATERIALS (PRIME COAT)	TON	0.5	0.5				
40600300	AGGREGATE (PRIME COAT)	TON	2.5	2.5				
40600980	BITUMINOUS SURFACE REMOVAL - BUTT JOINT	SQ YD	40	40				
44000100	PAVEMENT REMOVAL	SQ YD	417	417				
44000500	COMBINATION CURB AND GUTTER REMOVAL	FOOT	300	300				
44001430	BITUMINOUS SHOULDER REMOVAL	SQ YD	746	746				
48101200	AGGREGATE SHOULDERS, TYPE B	TON	94	94				
48200600	BITUMINOUS SHOULDERS 8"	SQ YD	585	585				
60107600	PIPE UNDERDRAINS 4"	FOOT	934	934				
60603800	COMBINATION CONCRETE CURB AND GUTTER, TYPE B-6.12	FOOT	30	30				
* 63000000	STEEL PLATE BEAM GUARD RAIL, TYPE A	FOOT	300	300				
* 63000025	STEEL PLATE BEAM GUARD RAIL, ATTACHED TO STRUCTURES	FOOT	4	4				
* 63100045	TRAFFIC BARRIER TERMINAL, TYPE 2	EACH	1	1				
63200310	GUARDRAIL REMOVAL	FOOT	102	102				
67000400	ENGINEER'S FIELD OFFICE, TYPE A	CAL MO	2	2				
67100100	MOBILIZATION	L SUM	1	1				
70101800	TRAFFIC CONTROL AND PROTECTION (SPECIAL)	L SUM	1	1				
70300520	PAVEMENT MARKING TAPE, TYPE III 4"	FOOT	1636	1636				

SUMMARY OF QUANTITIES			TOTAL QUANTITIES	URBAN CONSTRUCTION TYPE CODE				
CODE NO	ITEM	UNIT		100 %				
				STATE				
			I000-2A					
72400600	RELOCATE SIGN PANEL ASSEMBLY - TYPE B	EACH	1	1				
78000100	THERMOPLASTIC PAVEMENT MARKING - LETTERS AND SYMBOLS	SQ FT	150	150				
78000200	THERMOPLASTIC PAVEMENT MARKING - LINE 4"	FOOT	1446	1446				
78000400	THERMOPLASTIC PAVEMENT MARKING - LINE 6"	FOOT	70	70				
78000600	THERMOPLASTIC PAVEMENT MARKING - LINE 12"	FOOT	144	144				
78000650	THERMOPLASTIC PAVEMENT MARKING - LINE 24"	FOOT	24	24				
78100100	RAISED REFLECTIVE PAVEMENT MARKER	EACH	12	12				
78201000	TERMINAL MARKER - DIRECT APPLIED	EACH	2	2				
X0322256	TEMPORARY INFORMATION SIGNING	SQ FT	48	48				
X0322752	WORK ZONE PAVEMENT MARKING REMOVAL	FOOT	1500	1500				
X0323973	SEDIMENT CONTROL, SILT FENCE	FOOT	1000	1000				
X4066548	POLYMERIZED BITUMINOUS CONCRETE SURFACE COURSE, SUPERPAVE, MIX "F", N90	TON	166	166				
X4066658	POLYMERIZED BITUMINOUS CONCRETE BINDER COURSE, SUPERPAVE, IL-19.0, N90	TON	1000	1000				
* X7240505	RELOCATE SIGN PANEL AND POST	EACH	8	8				
Z0001050	AGGREGATE SUBGRADE 12"	SQ YD	1857	1857				
Z0013798	CONSTRUCTION LAYOUT	L SUM	1	1				
* 72000100	SIGN PANEL - TYPE 1	SQ.FT.	20	20				
* 63100167	TRAFFIC BARRIER TERMINAL TYPE 1, SPECIAL (TANGENT)	EACH	1	1				
X0323974	SEDIMENT CONTROL, SILT FENCE MAINTENANCE	FOOT	1000	1000				

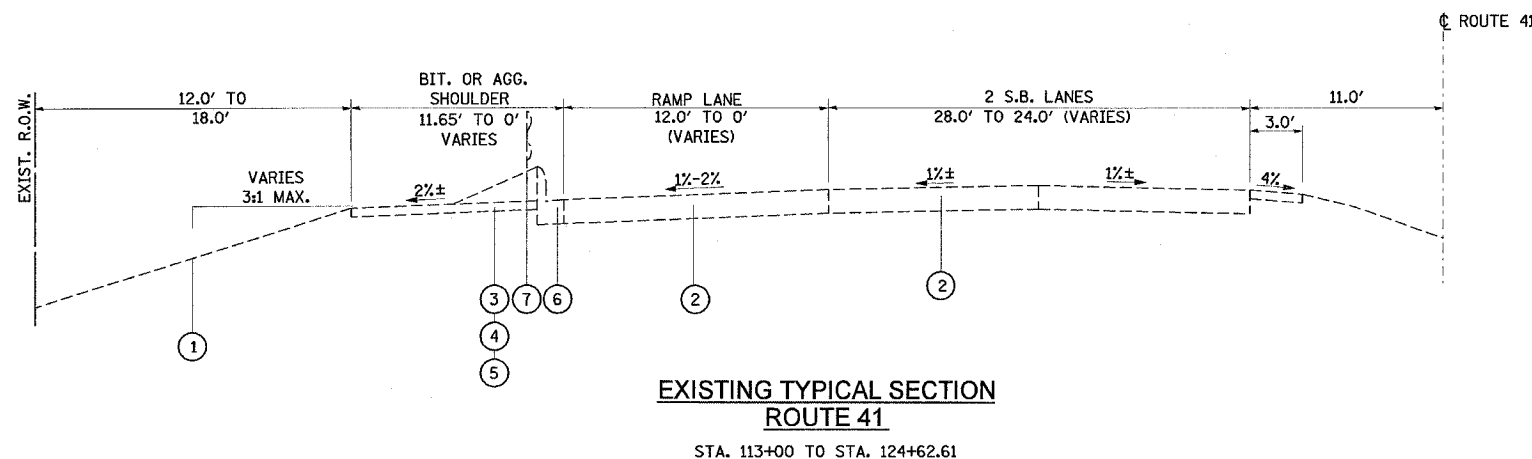
\*SPECIALTY ITEMS Rev.

REVISIONS	
NAME	DATE

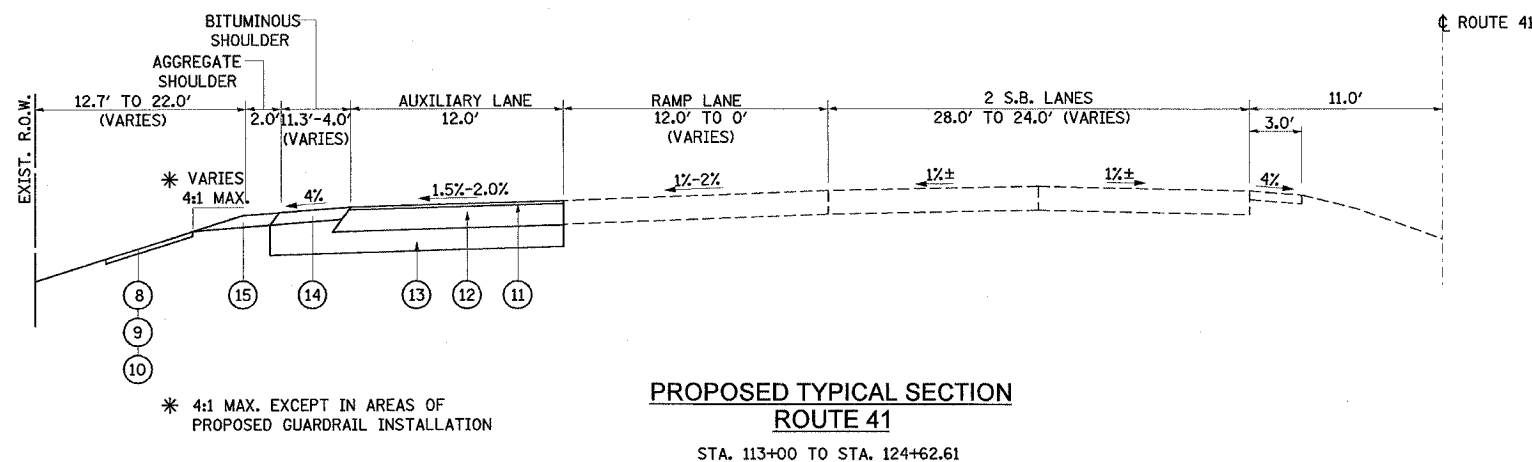
ILLINOIS DEPARTMENT OF TRANSPORTATION  
SUMMARY OF QUANTITIES

6/9/2005 6:13:03 PM C:\projects\060905\060905.dwg

F.A.P. RTE.	SECTION	COUNTY	TOTAL SHEETS	SHEET NO.
346	124 N	LAKE	19	4
STA.		TO STA.		
FED. ROAD DIST. NO.	ILLINOIS	FED. AID PROJECT		
CONTRACT NO. 62954				



**EXISTING TYPICAL SECTION  
ROUTE 41**  
STA. 113+00 TO STA. 124+62.61



**PROPOSED TYPICAL SECTION  
ROUTE 41**  
STA. 113+00 TO STA. 124+62.61

**EXISTING AND PROPOSED LEGEND**

- ① EXISTING GROUND
- ② EXISTING PAVEMENT
- ③ EXISTING SHOULDER
- ④ EXISTING PAVED SHOULDER REMOVAL
- ⑤ EXISTING AGGREGATE SHOULDER REMOVAL (PAID FOR AS EARTH EXCAVATION)
- ⑥ EXISTING COMBINATION CURB AND GUTTER REMOVAL
- ⑦ EXISTING GUARDRAIL REMOVAL
- ⑧ PROPOSED TOPSOIL FURNISH AND PLACE, 6 INCHES
- ⑨ PROPOSED SEEDING CLASS 2A
- ⑩ PROPOSED NITROGEN, PHOSPHORUS AND POTASSIUM FERTILIZER NUTRIENTS
- ⑪ POLY. BITUMINOUS CONCRETE SURFACE COURSE, SUPERPAVE, MIX "E", N90, 2 INCHES
- ⑫ POLY. BITUMINOUS CONCRETE BINDER COURSE, SUPERPAVE, IL-19.0, N90, 12 INCHES
- ⑬ PROPOSED AGGREGATE SUB-GRADE, 12 INCHES
- ⑭ PROPOSED BITUMINOUS SHOULDERS, 8 INCHES
- ⑮ PROPOSED AGGREGATE SHOULDERS-TY B, 8 INCHES

**BITUMINOUS MIXTURE REQUIREMENTS CHART**

MIXTURE	AC TYPE	VOIDS	MAX RAP.
POLYMERIZED BITUMINOUS CONCRETE SURFACE COURSE, SUPERPAVE, MIX "F", N90	SBS/SBR PG 70 -22	4% @ 90 GYR.	0%
POLYMERIZED BITUMINOUS CONCRETE BINDER COURSE, SUPERPAVE, IL-19.0, N90	SBS/SBR PG 70 -22	4% @ 90 GYR.	0%

NOTE: THE WEIGHT USED FOR ALL BITUMINOUS SURFACE MIXTURES IS 112 LB/SQ. YD./IN.

REVISIONS	
NAME	DATE

ILLINOIS DEPARTMENT OF TRANSPORTATION  
**F.A.P. 346 (US RTE. 41)**  
**@ IL 173**  
**TYPICAL SECTION**

SCALE: VERT.  
DATE:                      

DRAWN BY  
CHECKED BY

F.A.P. RTE.	SECTION	COUNTY	TOTAL SHEETS	SHEET NO.
346	124 N	LAKE	19	5
STA.		TO STA.		
FED. ROAD DIST. NO.		ILLINOIS FED. AID PROJECT		
CONTRACT NO. 62954				

## EARTHWORK SCHEDULE

STATION	STATION LENGTH	EXCAVATION END AREA (S.F.)	EMBANKMENT END AREA (S.F.)	EXCAVATION (CU. YD.)	EXCAVATION USED AS EMBANKMENT (SHRINKAGE 15%) (CU. YD.)	EMBANKMENT (CU. YD.)	EARTHWORK BALANCE SURPLUS (+) OR SHORTAGE (-) ( CU. YD.)	UNSUITABLE MATERIAL ( CU. YD.)
115+08.03		14.76	0.00					
116+00	91.97	44.65	0.10	101.21	86.03	0.17		
117+00	100	34.53	0.04	146.63	124.64	0.26		
118+00	100	35.80	0.00	130.24	110.70	0.07		
119+00	100	36.90	0.00	134.60	114.41	0.00		
120+00	100	33.00	2.34	129.44	110.02	4.33		
120+70.05	70.05	33.63	1.95	86.43	73.47	5.57		
121+00	29.95	36.45	4.15	38.87	33.04	3.38		
122+00	100	47.83	0.00	156.07	132.66	7.69		
123+00	100	52.64	0.08	186.06	158.15	0.15		
124+00	100	52.10	0.00	193.96	164.87	0.15		
124+62.61	62.61	53.60	0.00	122.55	104.17	0.00		
SUBTOTAL				1426	1212.16	21.17	+ 1191	113

**NOTE:**

A THICKNESS OF 6 INCHES OF TOPSOIL STRIPPING SHALL BE USED FOR REMOVAL AND DESPOSAL OF UNSUITABLE MATERIAL.

REVISIONS	
NAME	DATE

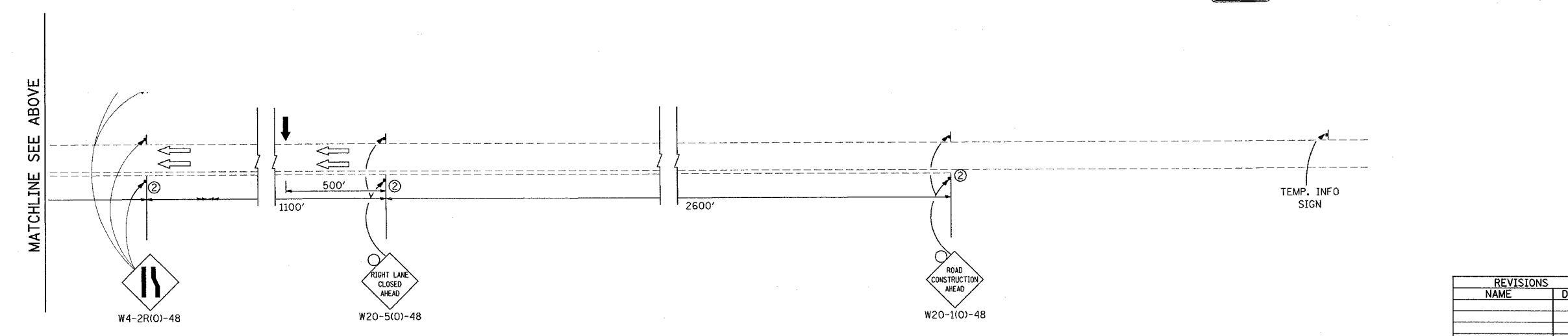
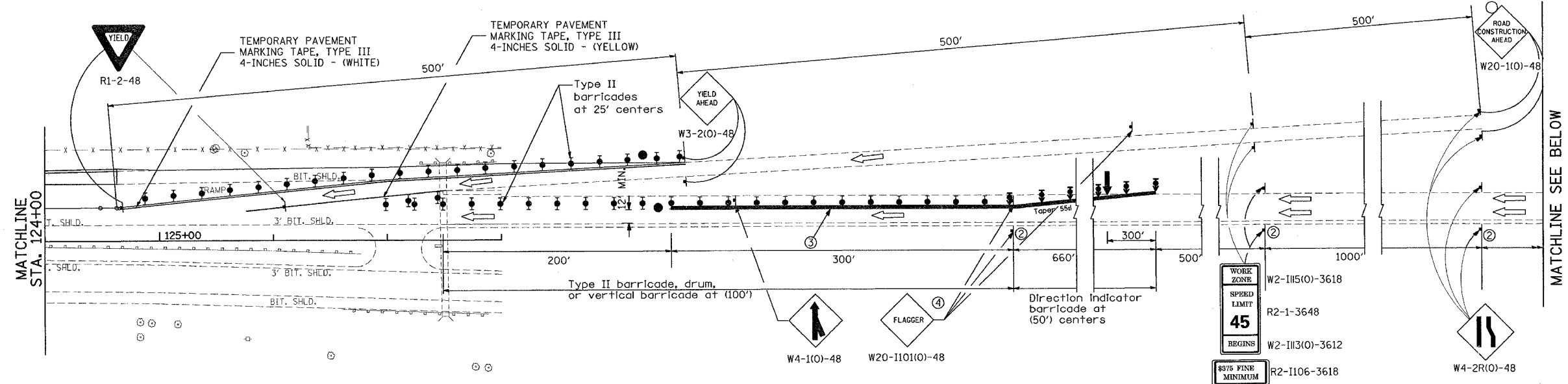
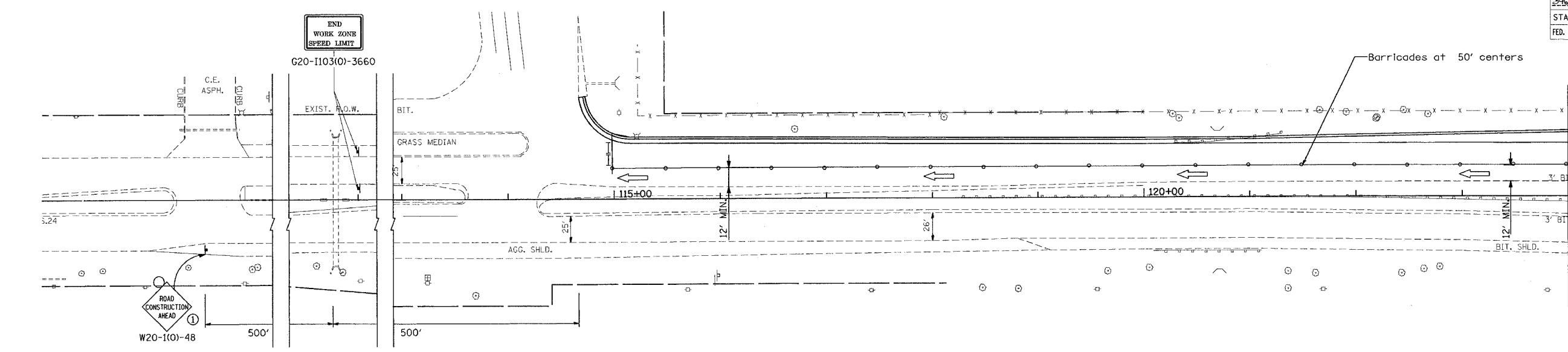
ILLINOIS DEPARTMENT OF TRANSPORTATION  
**F.A.P. 346 (IL RTE. 41)**  
**@ IL 173**  
**SCHEDULE OF QUANTITIES**

SCALE: VERT.  
HORIZ.  
DATE

DRAWN BY  
CHECKED BY

F.A.P. RTE.	SECTION	COUNTY	TOTAL SHEETS	SHEET NO.
24	124A	Lake	19	6
STA. 124+00		TO STA. 124+00		
FED. ROAD DIST. NO.		ILLINOIS FED. AID PROJECT		

62954



- NOTES:
- ① Undivided roadway only with left lane closure in opposite direction.
  - ② Omitted when median is less than 10'.
  - ③ Reflectorized temporary pavement marking tape shall be placed throughout the taper and for 300' along-side the work area where the closure time is greater than fourteen calendar days. The edge line shall be white for right lane closures and yellow for left lane closures. Raised reflectorized pavement markers at 25' centers shall be used to supplement the pavement marking tape.
  - ④ FLAGGER signs shall be moved as necessary to maintain the required spacing between the sign and each separate work activity.

- LEGEND:
- ← Traffic Flow Direction
  - ↑ Arrow board
  - ▨ Work area
  - ⊥ Sign
  - ↑ Direction indicator barricade with steady burn monodirectional light
  - I Type II barricade, drum, or vertical barricade
  - ⊥ Type II barricade, drum, or vertical barricade with steady burn monodirectional light
  - Type I barricade, drum, or vertical barricade
  - Flagger with traffic control sign

REVISIONS	
NAME	DATE

ILLINOIS DEPARTMENT OF TRANSPORTATION

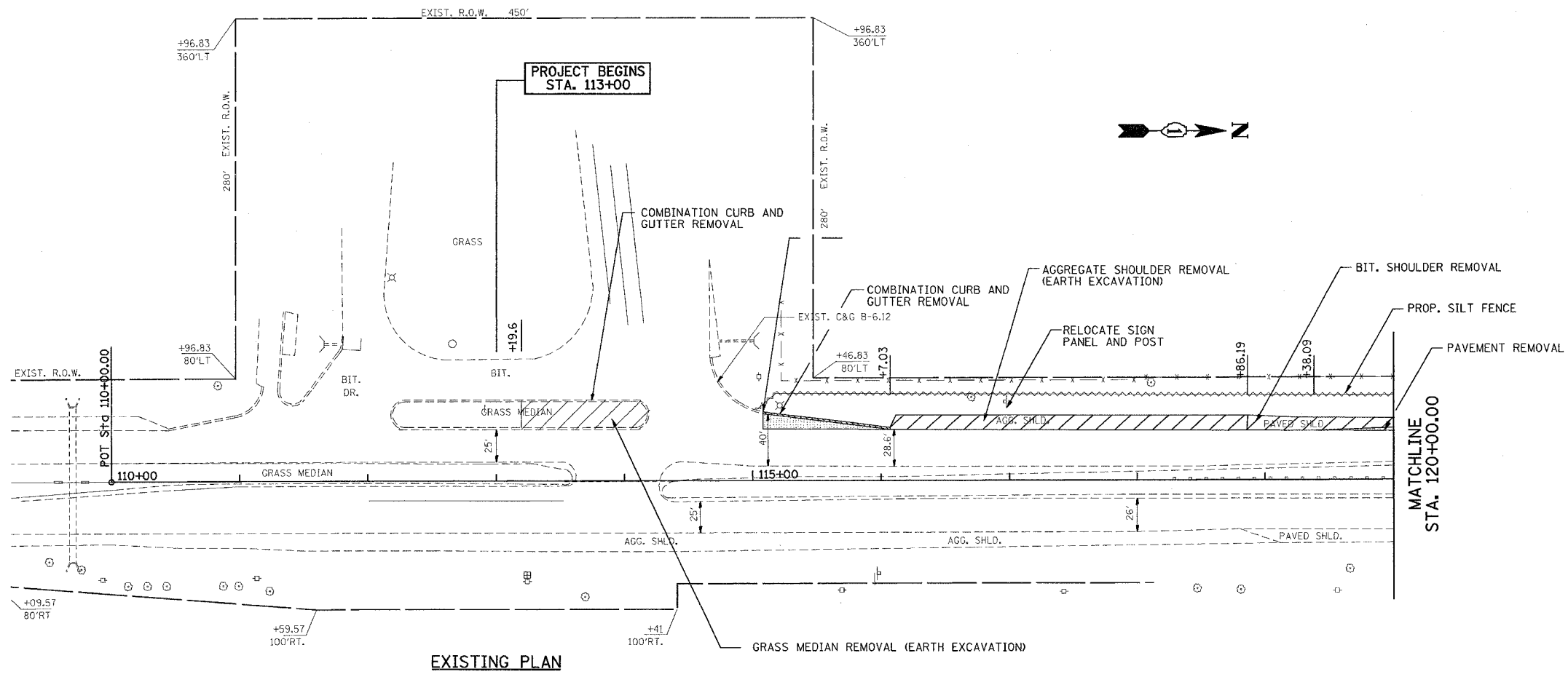
**MAINTENANCE OF TRAFFIC**

SCALE: 1:50  
DATE: MAY 17, 2005

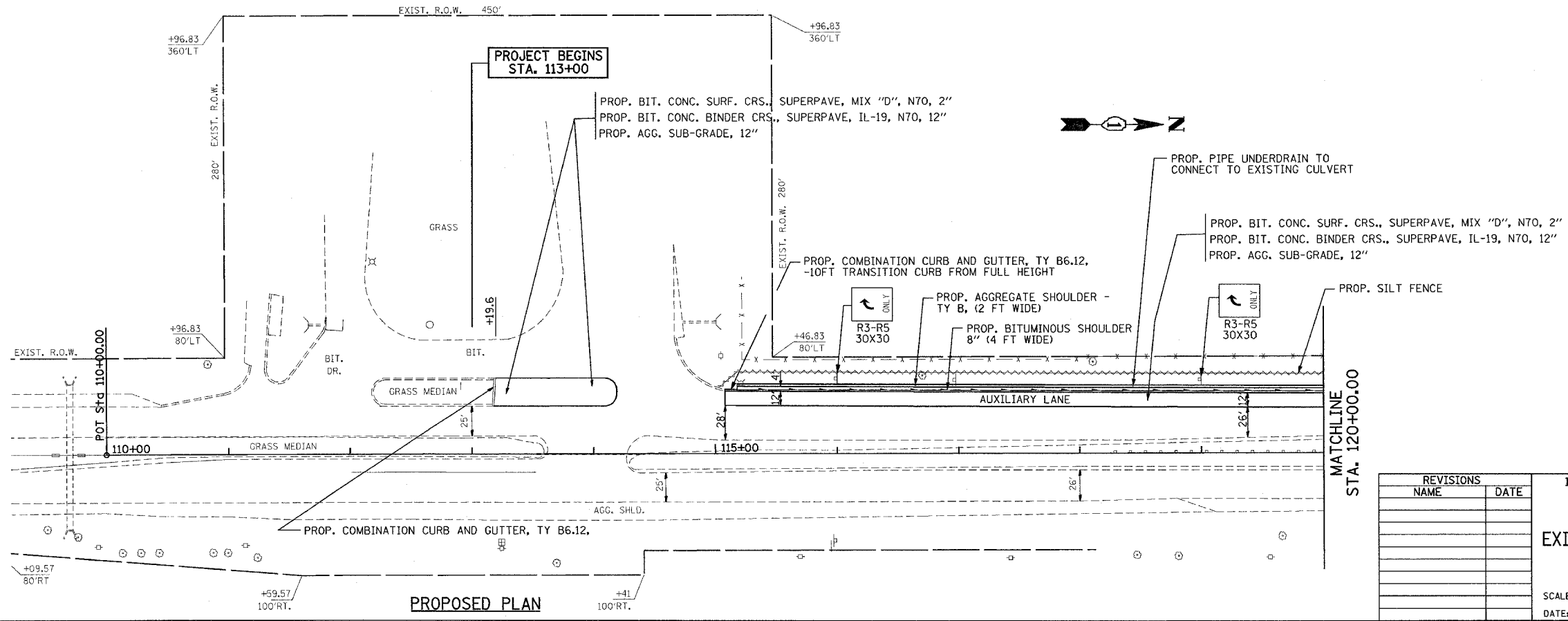
DRAWN BY: KC  
CHECKED BY: RT

62954

F.A.P. RTE.	SECTION	COUNTY	TOTAL SHEETS	SHEET NO.
346	124 N	LAKE	19	7
STA.		TO STA.		
FED. ROAD DIST. NO.		ILLINOIS FED. AID PROJECT		



- LEGEND:
- EXISTING PAVEMENT REMOVAL
  - EXISTING SHOULDER REMOVAL
  - TEMPORARY DITCH CHECKS
  - SEDIMENT CONTROL, SILT FENCE

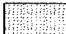
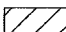
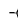



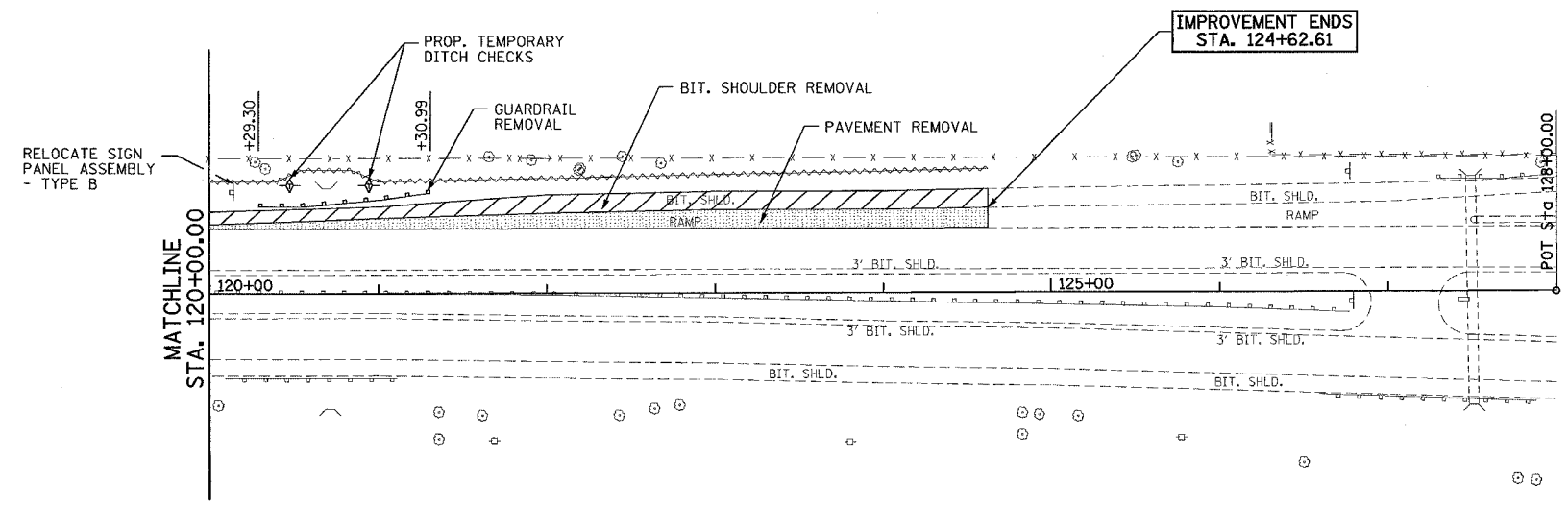
REVISIONS	
NAME	DATE

ILLINOIS DEPARTMENT OF TRANSPORTATION  
**F.A.P. 346 (US RTE. 41)**  
 @ IL 173  
**EXISTING AND PROPOSED ROADWAY  
 & EROSION CONTROL PLAN**  
 STA. 113+00 TO 120+00  
 SCALE: 1:50  
 DATE: MAY 17, 2005  
 DRAWN BY: KC  
 CHECKED BY: RT

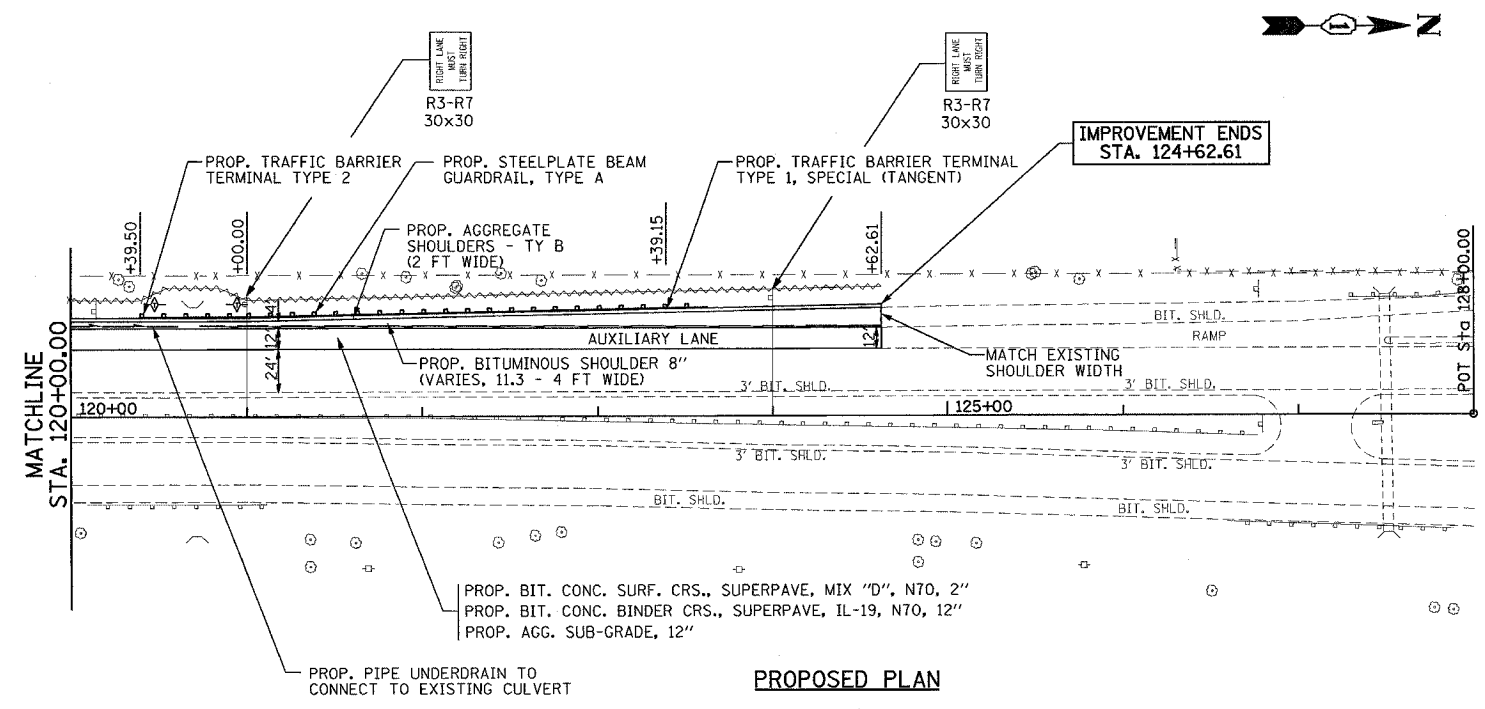
62954

F.A.P. RTE.	SECTION	COUNTY	TOTAL SHEETS	SHEET NO.
346	124 N	LAKE	19	8
STA.		TO STA.		
FED. ROAD DIST. NO.		ILLINOIS FED. AID PROJECT		

- LEGEND:
-  EXISTING PAVEMENT REMOVAL
  -  EXISTING SHOULDER REMOVAL
  -  TEMPORARY DITCH CHECKS
  -  SEDIMENT CONTROL, SILT FENCE



EXISTING PLAN



PROPOSED PLAN

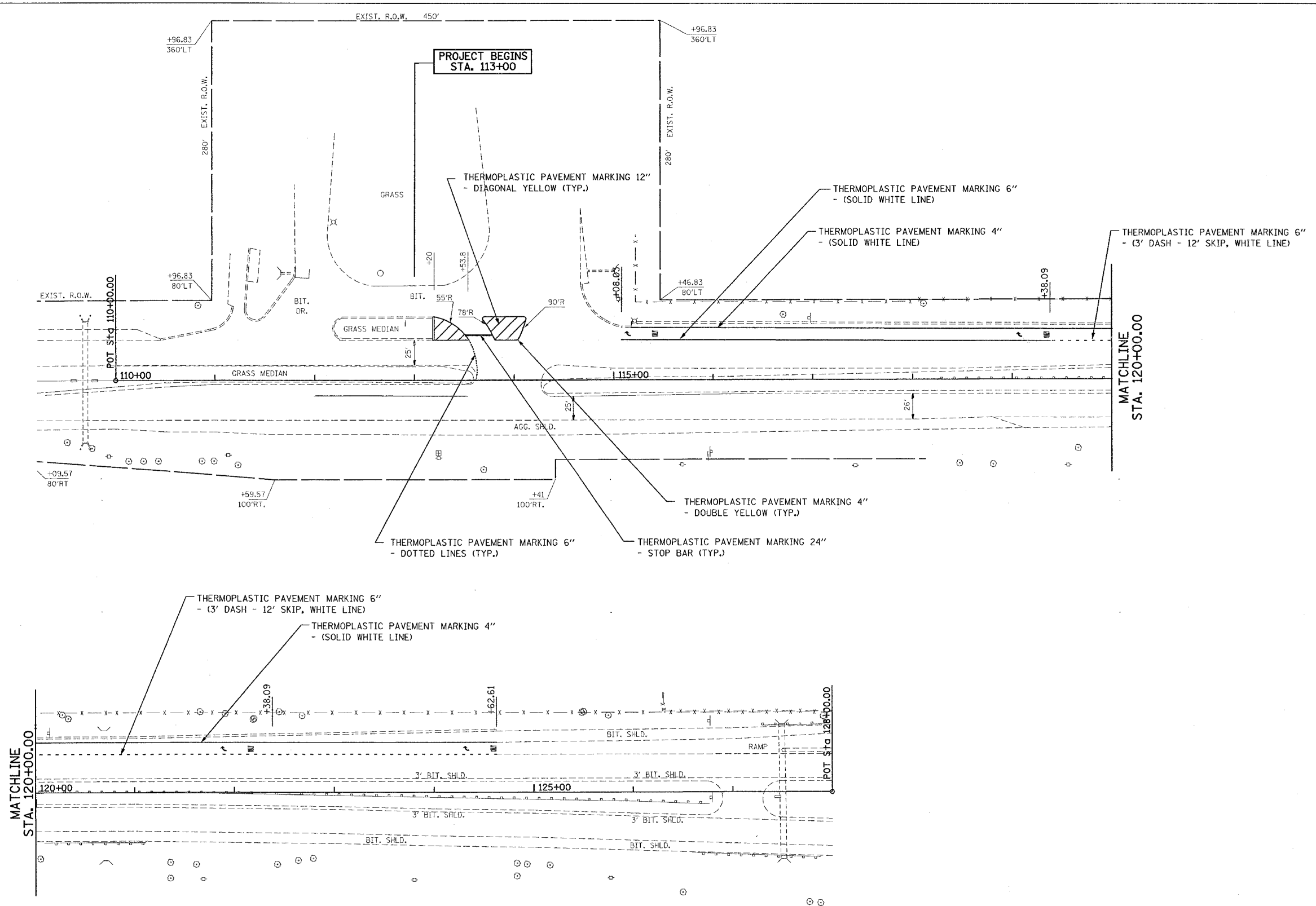
REVISIONS	
NAME	DATE

ILLINOIS DEPARTMENT OF TRANSPORTATION  
 F.A.P. 346 (US RTE. 41)  
 @ IL 173  
 EXISTING AND PROPOSED ROADWAY  
 & EROSION CONTROL PLAN  
 STA. 120+00 TO 125+00  
 SCALE: 1:50  
 DATE: MAY 17, 2005  
 DRAWN BY: KC  
 CHECKED BY: RT



F.A.P. RTE.	SECTION	COUNTY	TOTAL SHEETS	SHEET NO.
346	124 N	LAKE	19	9
STA.		TO STA.		
FED. ROAD DIST. NO.		ILLINOIS	FED. AID PROJECT	

CONT. 62954

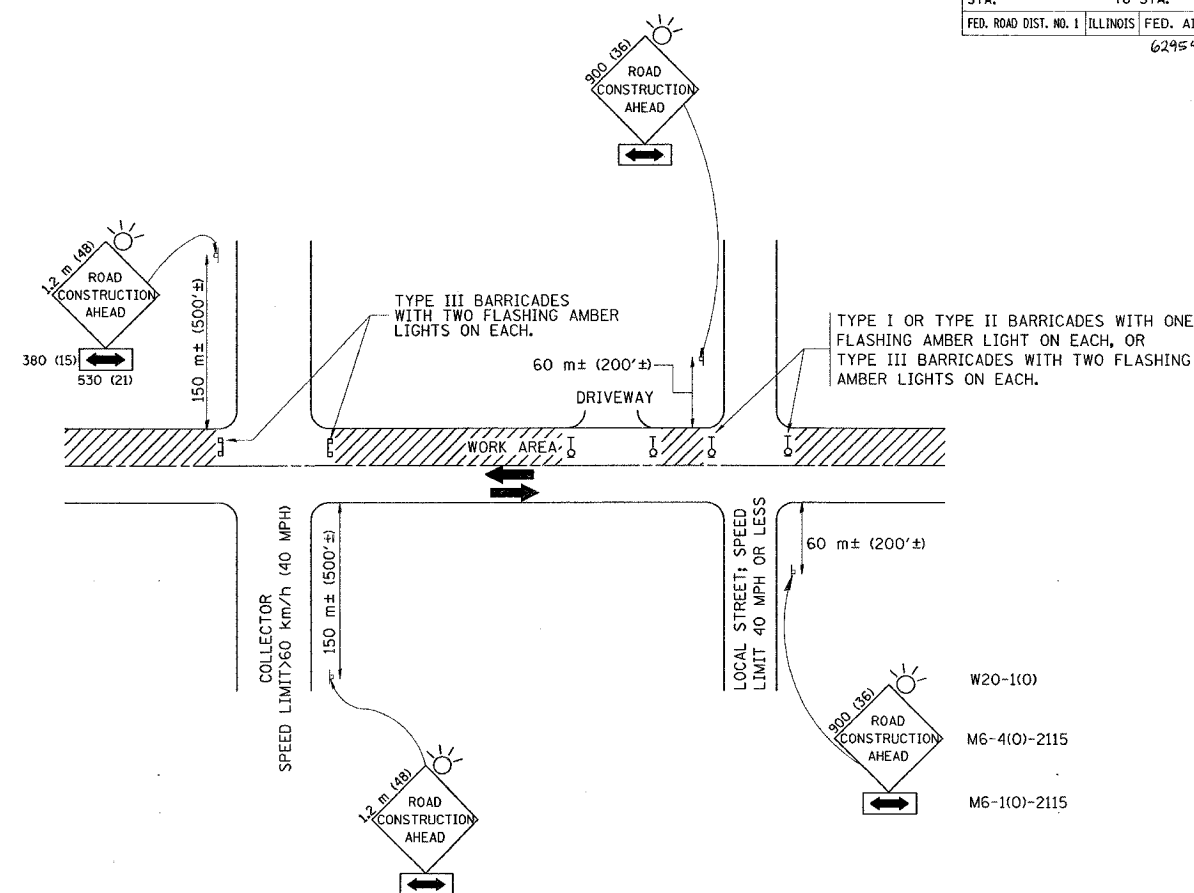


REVISIONS	
NAME	DATE

ILLINOIS DEPARTMENT OF TRANSPORTATION  
**F.A.P. 346 (US RTE. 41)**  
**@ IL 173**  
**PAVEMENT MARKING PLAN**

SCALE: 1:50  
DATE: MAY 17, 2005  
DRAWN BY: KC  
CHECKED BY: RT

F.A. RTE.	SECTION	COUNTY	TOTAL SHEETS	SHEET NO.
346	124N	Lake	19	10
STA.		TO STA.		
FED. ROAD DIST. NO. 1		ILLINOIS	FED. AID PROJECT	
62954				



### TRAFFIC CONTROL AND PROTECTION FOR SIDE ROADS, INTERSECTIONS, AND DRIVEWAYS

#### NOTES:

- A. FOR NO LANE RESTRICTION ON THE SIDE ROAD OR DRIVEWAYS**
- SIDE ROAD WITH A SPEED LIMIT OF 60 km/h (40 MPH) OR LESS AS SHOWN ON THE DRAWING AND AS DIRECTED BY THE ENGINEER:
    - ONE **ROAD CONSTRUCTION AHEAD** SIGN 900x900 (36x36) WITH A FLASHER AND FLAG MOUNTED ON IT APPROXIMATELY 60 m (200') IN ADVANCE OF THE MAIN ROUTE.
    - THE CLOSED PORTION OF THE MAIN ROUTE SHALL BE PROTECTED BY BLOCKING WITH TYPE I, TYPE II OR TYPE III BARRICADES, 1/3 OF THE CROSS SECTION OF THE CLOSED PORTION.
  - SIDE ROAD WITH A SPEED LIMIT GREATER THAN 60 km/h (40 MPH) AS SHOWN ON THE DRAWING AND AS DIRECTED BY THE ENGINEER:
    - ONE **ROAD CONSTRUCTION AHEAD** SIGN 1.2 m x 1.2 m (48x48) WITH A FLASHER MOUNTED ON IT APPROXIMATELY 150 m (500') IN ADVANCE OF THE MAIN ROUTE.
    - THE CLOSED PORTION OF THE MAIN ROUTE SHALL BE PROTECTED BY BLOCKING WITH TYPE III BARRICADES, 1/2 OF THE CROSS SECTION OF THE CLOSED PORTION.
  - WHEN THE SIDE ROAD LIES BETWEEN THE BEGINNING OF THE MAINLINE SIGNING AND THE WORK ZONE, A SINGLE HEADED ARROW (M6-1) SHALL BE USED IN LIEU OF THE DOUBLE HEADED ARROW (M6-4).
- B. FOR A LANE CLOSURE ON A SIDE ROAD OR DRIVEWAY:**
- USE APPLICABLE PORTIONS OF THE TYPICAL APPLICATION OF TRAFFIC CONTROL DEVICES (STD. 701501, STD. 701606 OR THE APPROPRIATE STANDARD). THE SPACING OF SIGNS AND BARRICADES SHALL BE ADJUSTED FOR FIELD CONDITIONS AS DIRECTED BY THE ENGINEER. THE DIRECTIONAL ARROW SHALL BE COVERED OR REMOVED WHEN NO LONGER CONSISTENT WITH THE SIDE ROAD LANE CLOSURE.
- C. ADVANCE WARNING SIGNS ARE TO BE OMITTED ON DRIVEWAY UNLESS OTHERWISE NOTED.**
- D. THE TRAFFIC CONTROL AND PROTECTION FOR SIDE ROADS, INTERSECTIONS, AND DRIVEWAYS SHALL BE INCIDENTAL TO THE COST OF SPECIFIED TRAFFIC CONTROL STANDARDS OR ITEMS.**

REVISIONS	
NAME	DATE
LHA	6/89
T. RAMMACHER	09/08/94
J. OBERLE	10/18/95
A. HOUSEH	03/06/96
A. HOUSEH	10/15/96
T. RAMMACHER	01/06/00

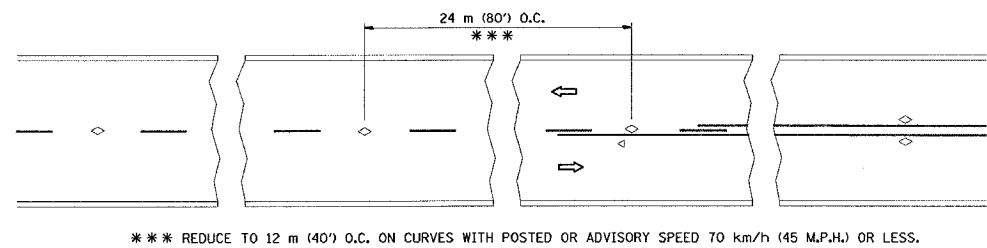
ILLINOIS DEPARTMENT OF TRANSPORTATION  
**TRAFFIC CONTROL AND PROTECTION  
 FOR  
 SIDE ROADS, INTERSECTIONS, AND  
 DRIVEWAYS**

SCALE: VERT.  
 HORIZ.  
 DATE 5/24/2005

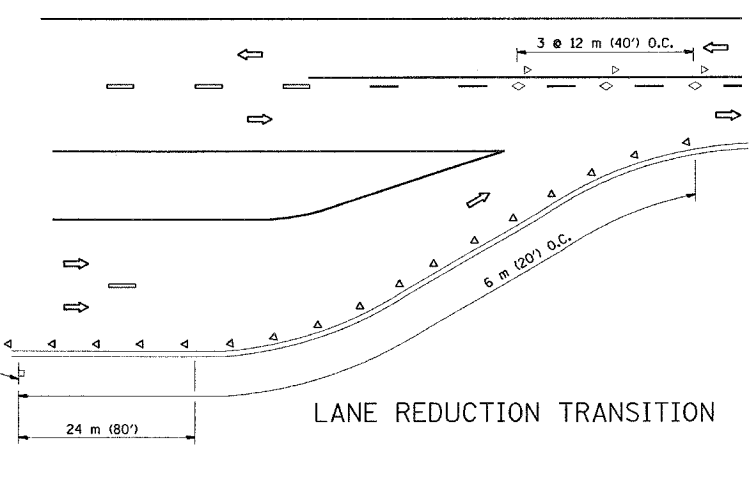
DRAWN BY  
 CHECKED BY  
 TC-10

REVISION DATE: 01/06/00

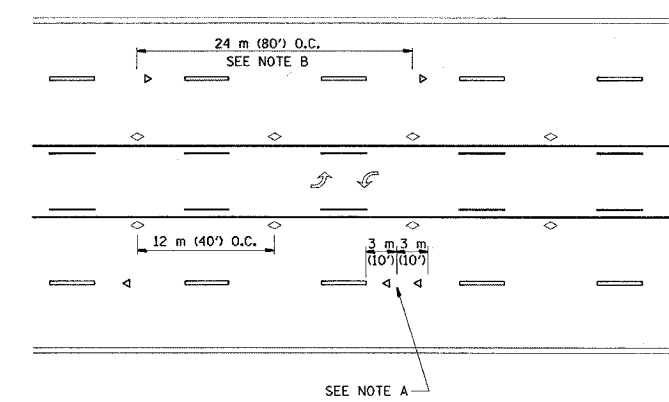
F. A. DIST.	SECTION	COUNTY	TOTAL SHEETS	SHEET NO.
346	D4N	Lake	19	11
STA.	TO STA.			
FED. ROAD DIST. NO.	ILLINOIS	FED. AID PROJECT		
		62954		



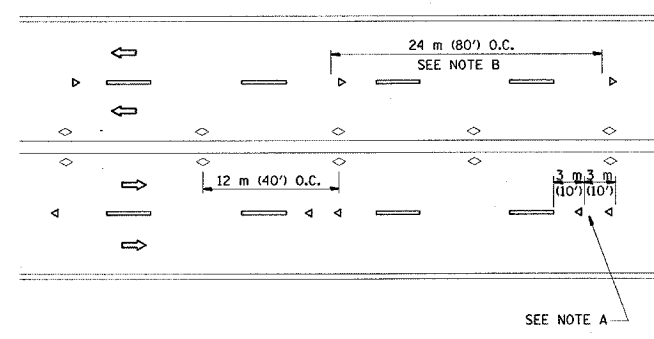
TWO-LANE/TWO-WAY



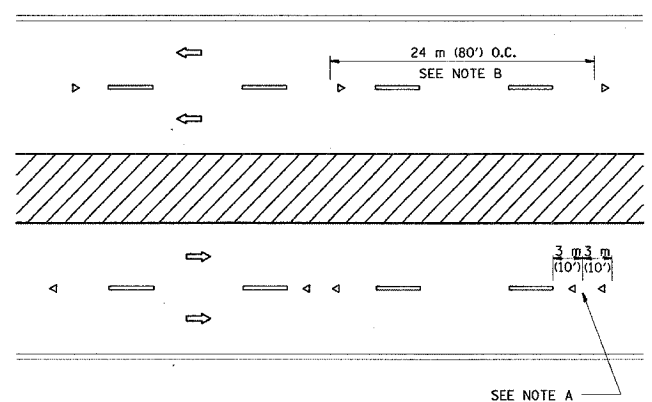
LANE REDUCTION TRANSITION



TWO-WAY LEFT TURN



MULTI-LANE/UNDIVIDED



MULTI-LANE/DIVIDED

GENERAL NOTES

1. MARKERS USED WITH DASHED LINES SHALL BE CENTERED IN THE GAP BETWEEN SEGMENTS.
2. MARKERS USED ADJACENT TO SOLID LINES SHALL BE OFFSET 50 TO 75 (2 TO 3) TOWARD TRAFFIC AS SHOWN.
3. MARKERS THROUGH TANGENTS LESS THAN 150 m (500') IN LENGTH BETWEEN CURVES SHALL BE INSTALLED AT THE LESSER OF THE TWO CURVE SPACINGS.

SYMBOLS

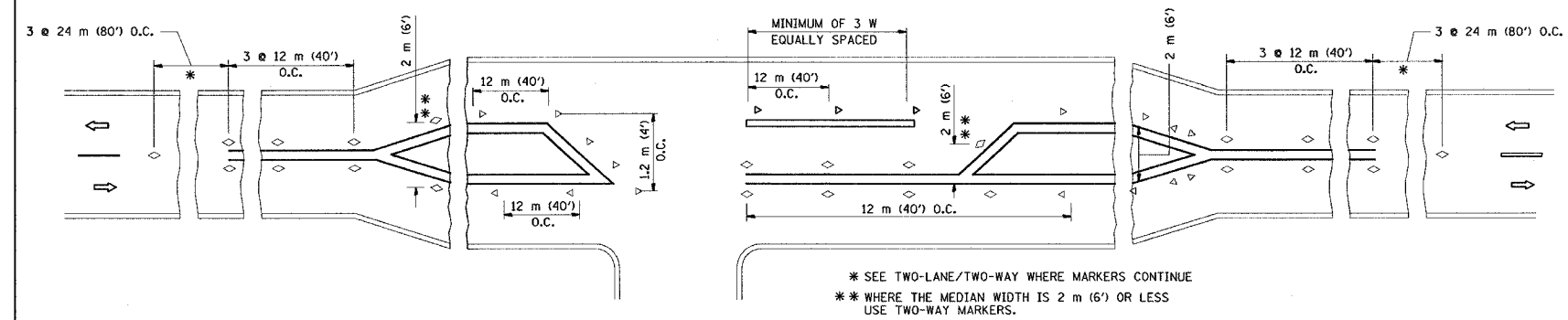
- YELLOW STRIPE
- WHITE STRIPE
- ◁ ONE-WAY AMBER MARKER
- ◁ ONE-WAY CRYSTAL MARKER (W/O)
- ◇ TWO-WAY AMBER MARKER

LANE MARKER NOTES

- A. USE DOUBLE LANE LINE MARKERS SPACED AS SHOWN.
- B. REDUCE TO 12 m (40') O.C. ON CURVES WHERE ADVISORY SPEEDS ARE 20 km/h (10 M.P.H.) LOWER THAN POSTED SPEEDS.

DESIGN NOTES

1. DOUBLE LANE LINE MARKERS SHALL BE USED UNLESS SPECIFIED OTHERWISE.
2. EXCEPT AS SHOWN ON THE LANE REDUCTION TRANSITION AND FREEWAY EXIT RAMP DETAIL, MARKERS ARE NOT TO BE SPECIFIED ON RIGHT EDGE LINES.
3. THE EXACT MARKER LIMITS, SPACING, AND COLOR SHOULD BE INCLUDED IN THE PLANS.
4. MARKERS SHOULD NOT BE USED ALONGSIDE CURBS EXCEPT FOR EXTREMELY SHORT SECTIONS OF CURBS WHERE NOT MORE THAN TWO MARKERS WOULD BE INVOLVED.



LEFT TURN

All dimensions are in millimeters (Inches) unless otherwise shown.

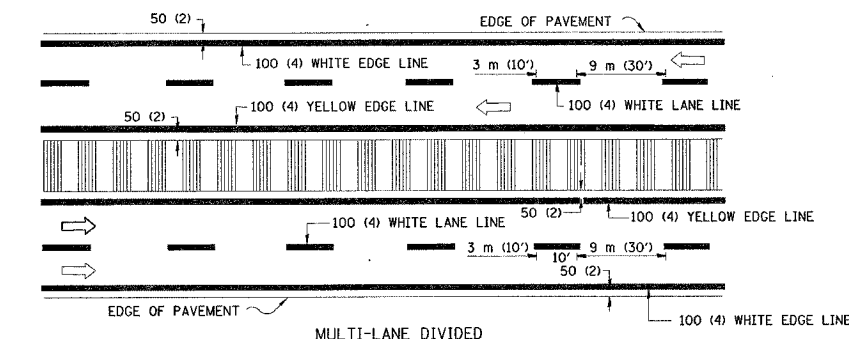
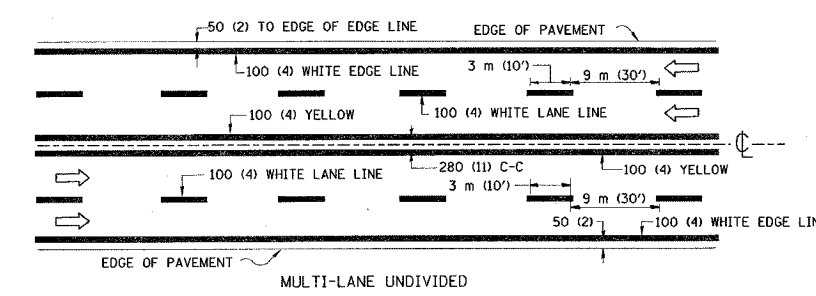
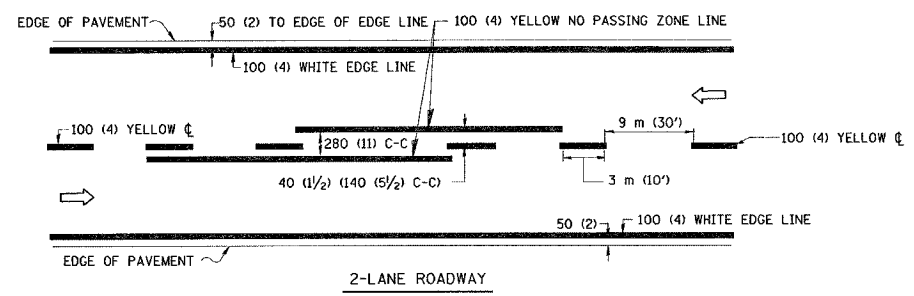
ILLINOIS DEPARTMENT OF TRANSPORTATION  
TYPICAL APPLICATIONS  
RAISED REFLECTIVE PAVEMENT MARKERS  
(SNOW-PLOW RESISTANT)

REVISIONS	
NAME	DATE
T. RAMMACHER	09-19-94
T. RAMMACHER	03-12-99
T. RAMMACHER	01-06-00

SCALE: NONE  
DATE: 5/24/2005  
DRAWN BY CAD  
CHECKED BY TC-11

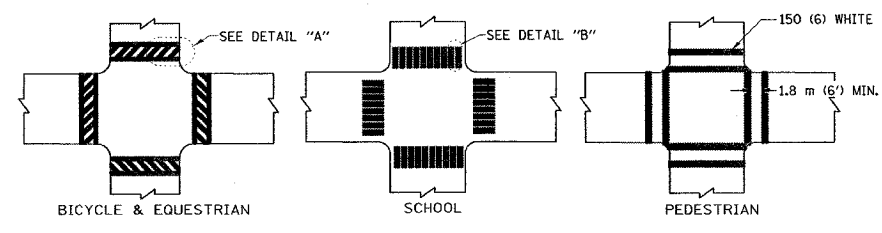
62954

F.A. NO.	SECTION	COUNTY	TOTAL SHEETS	SHEET NO.
346	124N	Lake	19	12
STA.	TO STA.			
FED. ROAD DIST. NO.	ILLINOIS	FED. AID PROJECT		

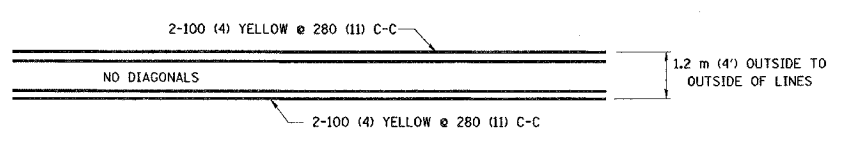


NOTE: MEDIANS WITH BARRIER CURB DO NOT REQUIRE AN EDGE LINE

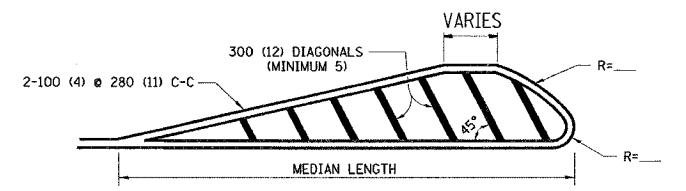
TYPICAL LANE AND EDGE LINE MARKING



TYPICAL CROSSWALK MARKING

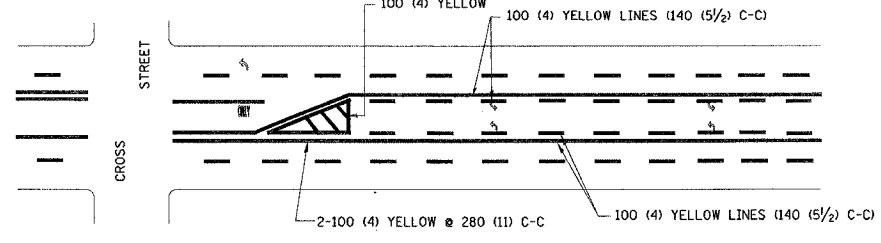


1.2 m (4') WIDE MEDIANS ONLY

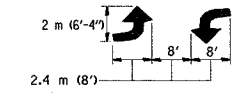


FOR MEDIAN LENGTHS WHERE DIAGONAL SPACING CANNOT BE ATTAINED, USE 5 (FIVE) EQUALLY SPACED DIAGONAL LINES.  
 DIAGONAL LINE SPACING: 15 m (50') C-C (LESS THAN 50 km/h (30 MPH))  
 25 m (75') C-C (50 km/h (30 MPH) TO 70 km/h (45 MPH))  
 45 m (150') C-C (MORE THAN 70 km/h (45 MPH))

MEDIANS OVER 1.2 m (4') WIDE

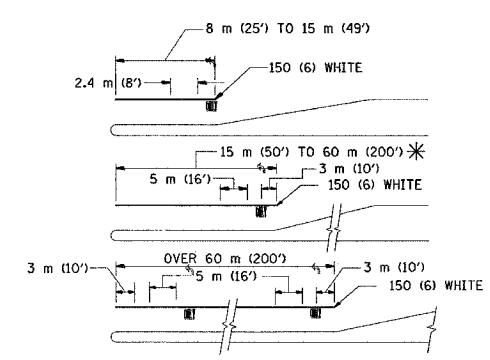


A MINIMUM OF TWO PAIRS OF TURN ARROWS SHALL BE USED, WHITE IN COLOR. ADDITIONAL PAIRS SHALL BE PLACED AT 60 m (200') TO 90 m (300') INTERVALS.



MEDIAN WITH TWO-WAY LEFT TURN LANE

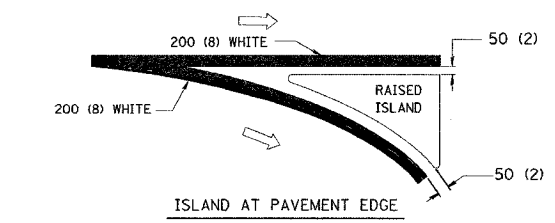
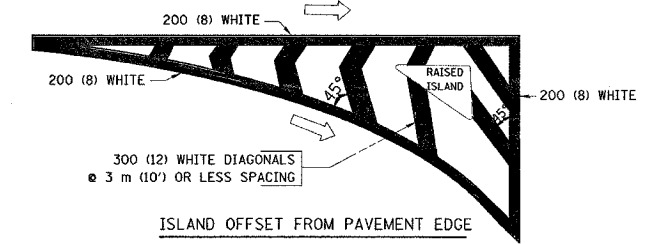
TYPICAL PAINTED MEDIAN MARKING



FULL SIZE LETTERS 2.4 m (8') AND ARROWS SHALL BE USED.  
 \* TURN LANES IN EXCESS OF 120 m (400') IN LENGTH MAY HAVE AN ADDITIONAL SET OF ARROW - "ONLY" INSTALLED MIDWAY BETWEEN THE OTHER TWO SETS OF ARROW - "ONLY".

TYPICAL LEFT (OR RIGHT) TURN LANE

TYPICAL TURN LANE MARKING



TYPICAL ISLAND MARKING

TYPE OF MARKING	WIDTH OF LINE	PATTERN	COLOR	SPACING / REMARKS
CENTERLINE ON 2 LANE PAVEMENT	100 (4)	SKIP-DASH	YELLOW	3 m (10') LINE WITH 9 m (30') SPACE
CENTERLINE ON MULTI-LANE UNDIVIDED PAVEMENT	2 @ 100 (4)	SOLID	YELLOW	280 (11) C-C
NO PASSING ZONE LINES: FOR ONE DIRECTION FOR BOTH DIRECTIONS	100 (4) 2 @ 100 (4)	SOLID SOLID	YELLOW YELLOW	140 (5 1/2) C-C FROM SKIP-DASH CENTERLINE 280 (11) C-C OMIT SKIP-DASH CENTERLINE BETWEEN
LANE LINES	100 (4) 125 (5) ON FREEWAYS	SKIP-DASH SKIP-DASH	WHITE WHITE	3 m (10') LINE WITH 9 m (30') SPACE
DOTTED LINES (EXTENSIONS OF CENTER, LANE OR TURN LANE MARKINGS)	SAME AS LINE BEING EXTENDED	SKIP-DASH	SAME AS LINE BEING EXTENDED	600 (2') LINE WITH 1.8 m (6') SPACE
EDGE LINES	100 (4)	SOLID	YELLOW-LEFT WHITE-RIGHT	OUTLINE MOUNTABLE MEDIANS IN YELLOW; EDGE LINES ARE NOT USED NEXT TO BARRIER CURB
TURN LANE MARKINGS	150 (6) LINE; FULL SIZE LETTERS & SYMBOLS (2.4 m (8'))	SOLID	WHITE	SEE TYPICAL TURN LANE MARKING DETAIL
TWO WAY LEFT TURN MARKING	2 @ 100 (4) EACH DIRECTION 2.4 m (8') LEFT ARROW	SKIP-DASH AND SOLID IN PAIRS	YELLOW WHITE	3 m (10') LINE WITH 9 m (30') SPACE FOR SKIP-DASH; 140 (5 1/2) C-C BETWEEN SOLID LINE AND SKIP-DASH LINE SEE TYPICAL TWO-WAY LEFT TURN MARKING DETAIL
CROSSWALK LINES (PEDESTRIAN) A. DIAGONALS (BIKE & EQUESTRIAN) B. LONGITUDINAL BARS (SCHOOL)	2 @ 150 (6) 300 (12) @ 45° 300 (12) @ 90°	SOLID SOLID SOLID	WHITE WHITE WHITE	NOT LESS THAN 1.8 m (6') APART 600 (2') APART 600 (2') APART SEE TYPICAL CROSSWALK MARKING DETAILS.
STOP LINES	600 (24)	SOLID	WHITE	PLACE 1.2 m (4') IN ADVANCE OF AND PARALLEL TO CROSSWALK, IF PRESENT. OTHERWISE, PLACE AT DESIRED STOPPING POINT, PARALLEL TO CROSSROAD CENTERLINE, WHERE POSSIBLE
PAINTED MEDIANS	2 @ 100 (4) WITH 300 (12) DIAGONALS @ 45° NO DIAGONALS USED FOR 1.2 m (4') WIDE MEDIANS	SOLID	YELLOW; TWO WAY TRAFFIC WHITE; ONE WAY TRAFFIC	280 (11) C-C FOR THE DOUBLE LINE SEE TYPICAL PAINTED MEDIAN MARKING.
GORE MARKING AND CHANNELIZING LINES	200 (8) WITH 300 (12) DIAGONALS @ 45°	SOLID	WHITE	DIAGONALS: 4.5 m (15') C-C (LESS THAN 50 km/h (30 MPH)) 6 m (20') C-C (50 km/h (30 MPH) TO 70 km/h (45 MPH)) 9 m (30') C-C (OVER 70 km/h (45 MPH))
RAILROAD CROSSING	600 (24) TRANSVERSE LINES; "RR" IS 1.8 m (6') LETTERS; 400 (16) LINE FOR "X"	SOLID	WHITE	SEE STATE STANDARD 780001 AREA OF: "RR"=0.33m <sup>2</sup> (3.6 SQ. FT.) EACH "X"=5.0 m <sup>2</sup> (54.0 SQ. FT.)
SHOULDER DIAGONALS	300 (12) @ 45°	SOLID	WHITE - RIGHT YELLOW - LEFT	15 m (50') C-C (LESS THAN 50 km/h (30 MPH)) 25 m (75') C-C (50 km/h (30 MPH) TO 70 km/h (45 MPH)) 45 m (150') C-C (OVER 70 km/h (45 MPH))

FOR FURTHER DETAILS ON PAVEMENT MARKING REFER TO STANDARD SPECIFICATIONS FOR ROAD AND BRIDGE CONSTRUCTION AND STATE STANDARD 780001.

All dimensions are in millimeters (inches) unless otherwise shown.

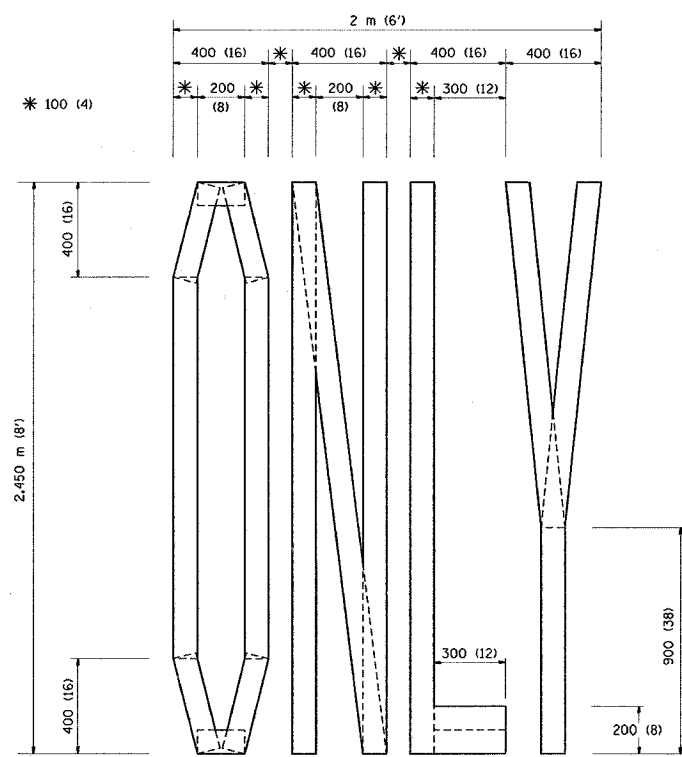
ILLINOIS DEPARTMENT OF TRANSPORTATION

DISTRICT ONE  
TYPICAL PAVEMENT MARKINGS

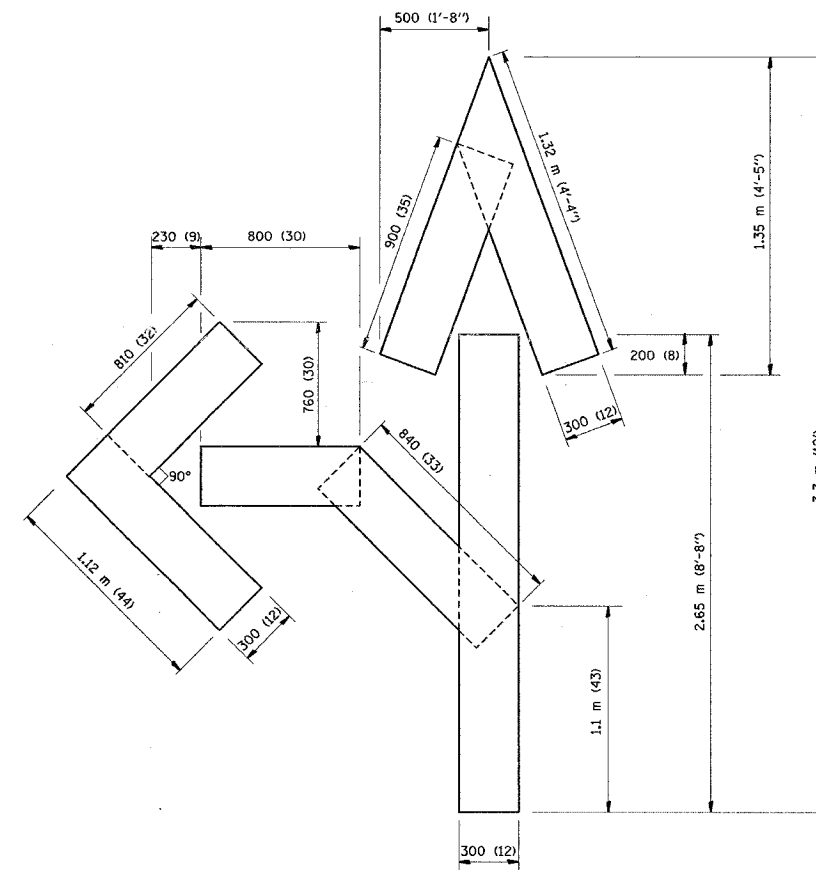
REVISIONS	
NAME	DATE
EVERS	03-19-90
T. RAMMACHER	10-27-94
ALEX HOUSEH	10-09-96
ALEX HOUSEH	10-17-96
T. RAMMACHER	01-06-00

SCALE: NONE  
DATE 5/24/2005  
DRAWN BY CADD  
CHECKED BY  
TC-13  
REVISION DATE: 01/06/00

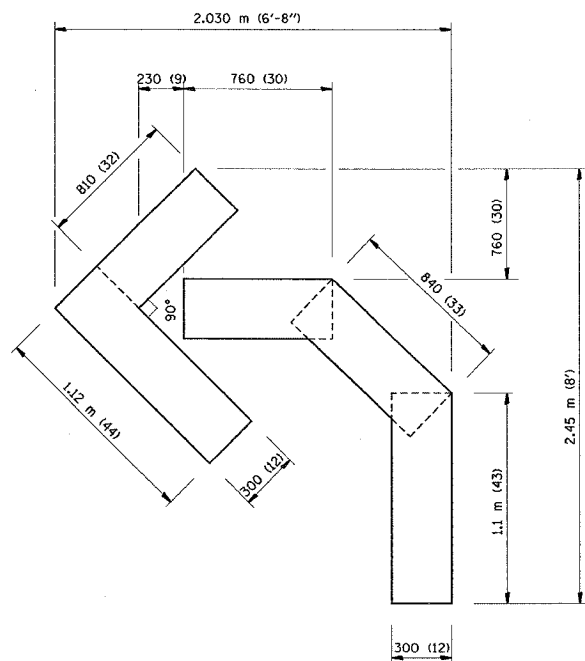
F. A. RFL	SECTION	COUNTY	TOTAL SHEETS	SHEET NO
346	124N	Lake	19	12A
STA.		TO STA.		
FED. ROAD DIST. NO.		ILLINOIS	FED. AID PROJECT	
Cont. 62454				



QUANTITY  
 100 (4) LINE = 19.7 m (64.1 ft.)  
 1.97 sq. m (21.1 sq. ft.)



QUANTITY  
 100 (4) LINE = 25.3 m (82.5 ft.)  
 2.53 sq. m (27.5 sq. ft.)



QUANTITY  
 100 (4) LINE = 13.9 m (45.5 ft.)  
 1.39 sq. m (15.2 sq. ft.)

All dimensions are in millimeters (Inches) unless otherwise shown.

ILLINOIS DEPARTMENT OF TRANSPORTATION

PAVEMENT MARKING  
 LETTERS AND SYMBOLS  
 FOR TRAFFIC STAGING

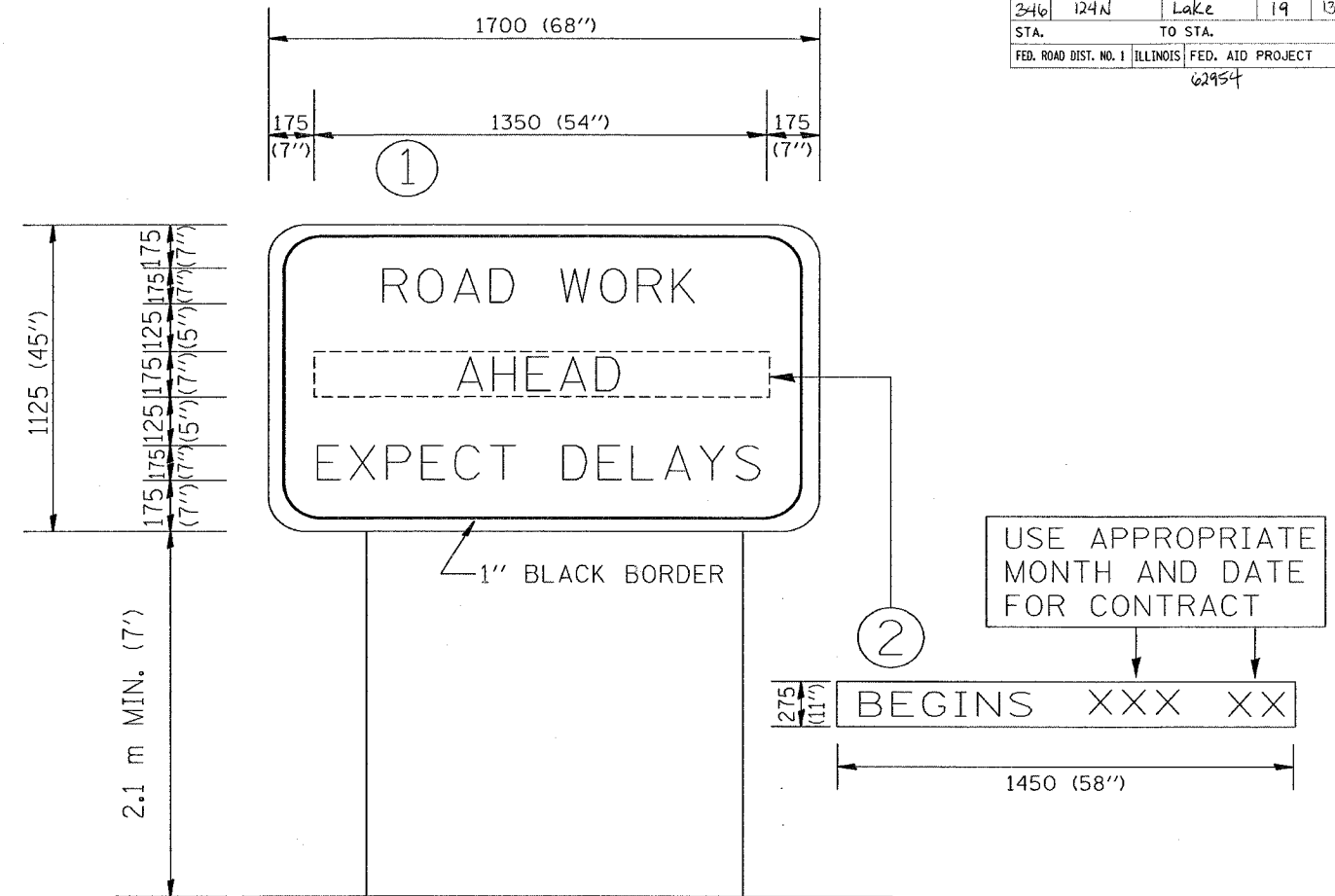
REVISIONS	
NAME	DATE
T. RAMMACHER	09/18/94
J. OBERLE	06/01/96
T. RAMMACHER	06/05/96
T. RAMMACHER	11/04/97
T. RAMMACHER	03/02/98
E. GOMEZ	08/28/00

SCALE: NONE  
 DATE 6/24/2005

DRAWN BY CADD  
 CHECKED BY  
 TC-16

REVISION DATE: 08/28/00

F.A. RTE.	SECTION	COUNTY	TOTAL SHEETS	SHEET NO.
346	124N	Lake	19	13
STA.		TO STA.		
FED. ROAD DIST. NO. 1		ILLINOIS	FED. AID PROJECT	
		62954		



NOTES:

1. USE BLACK LETTERING ON ORANGE BACKGROUND.
2. ERECT SIGNS IN ADVANCE OF THE LOCATION FOR THE "ROAD CONSTRUCTION AHEAD" SIGN AT LOCATIONS AS DIRECTED BY THE ENGINEER.
3. ERECT SIGN ① WITH INSTALLED PANEL ② ONE WEEK PRIOR TO THE START OF CONSTRUCTION.
4. REMOVE PANEL ② SOON AFTER THE START OF CONSTRUCTION.
5. SEE SPECIAL PROVISION FOR "TEMPORARY INFORMATION SIGNING" FOR ADDITIONAL INFORMATION.
6. ONE SIGN ASSEMBLY EQUALS 2.3 SQ. M. (25.70 SQ. FT.)

ALL DIMENSIONS ARE IN MILLIMETERS (INCHES) UNLESS OTHERWISE SHOWN.

REVISIONS	
NAME	DATE
R. MIRS	9-15-97
R. MIRS	2-11-97
T. RAMMACHER	2-2-99

ILLINOIS DEPARTMENT OF TRANSPORTATION  
TEMPORARY INFORMATION SIGNING

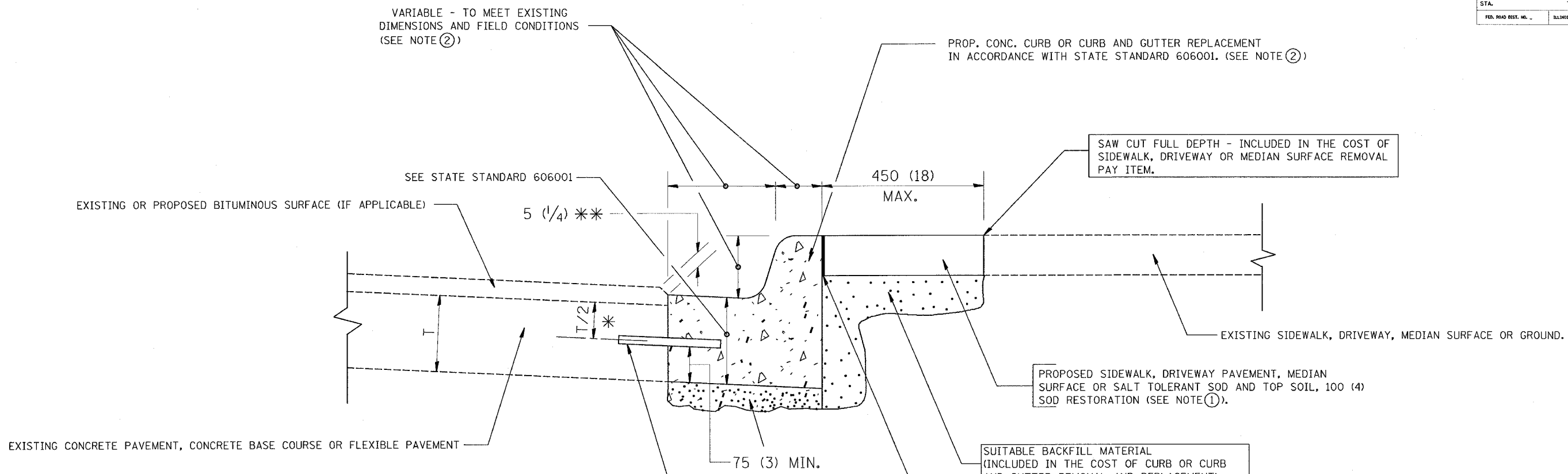
SCALE:  
DATE 5/24/2005

DRAWN BY: BUR. OF DESIGN  
CHECKED BY:

TC22  
REVISION DATE: 02/02/99

F. A. DIST.	SECTION	COUNTY	TOTAL SHEETS	SHEET NO.
24th	124N	Lake	19	14
STA.		TO STA.		
FED. ROAD DIST. NO.		ILLINOIS	FED. AID PROJECT	

62934



- \* 75 (3) MINIMUM FROM TOP AND BOTTOM OF THE CONCRETE PAVEMENT OR BASE COURSE.
- \*\* IF THE FINAL SURFACE OF THE PAVEMENT IS CONCRETE, THE GUTTER IS TO BE FLUSH WITH THE PAVEMENT.

- NOTE:
- ① SIDEWALK, DRIVEWAY PAVEMENT OR MEDIAN SURFACE SHALL BE SIMILAR TO THE MATERIAL BEING REMOVED AND WILL BE PAID FOR SEPARATELY.
  - SALT TOLERANT SOD AND TOP SOIL, 100 (4) RESTORATION WILL NOT BE PAID FOR SEPARATELY, BUT SHALL BE INCLUDED IN THE COST OF CURB OR CURB AND GUTTER REMOVAL AND REPLACEMENT.
  - ② CURB OR CURB AND GUTTER REPLACEMENT SHALL MATCH THE SHAPE OF THE EXISTING CURB OR CURB AND GUTTER UNLESS OTHERWISE SPECIFIED.
  - ③ FOR CURB OR CURB AND GUTTER REMOVAL AND REPLACEMENT ADJACENT TO FLEXIBLE PAVEMENT DELETE EPOXY COATED TIE BARS.
  - ④ LONGITUDINAL BARS, IF ENCOUNTERED IN THE EXISTING CURB OR CURB AND GUTTER, ARE NOT TO BE REPLACED. CUTTING AND REMOVING LONGITUDINAL BARS SHALL BE INCLUDED IN THE COST OF CURB OR CURB AND GUTTER REMOVAL AND REPLACEMENT.
  - ⑤ THE COST OF BITUMINOUS SURFACE REMOVAL IN THE EXISTING GUTTER FLAG SHALL BE INCLUDED IN THE COST OF THE CURB AND GUTTER REMOVAL AND REPLACEMENT.
  - ⑥ THE REMOVAL AND REPLACEMENT OF THE EXISTING CURB OR CURB AND GUTTER SHALL BE DONE IN ACCORDANCE WITH THE APPLICABLE PORTIONS OF SECTION 440 AND 606 OF THE STANDARD SPECIFICATIONS.
  - ⑦ THE LOCATIONS OF REMOVAL AND REPLACEMENT OF EXISTING CURB OR CURB AND GUTTER SHALL BE DETERMINED BY THE RESIDENT ENGINEER AT THE TIME OF CONSTRUCTION.

**BASIS OF PAYMENT:**  
 THIS WORK WILL BE PAID FOR AT THE CONTRACT UNIT PRICE PER METER (FOOT) FOR "CURB REMOVAL AND REPLACEMENT" OR "COMBINATION CONCRETE CURB AND GUTTER REMOVAL AND REPLACEMENT".

ALL DIMENSIONS ARE IN MILLIMETERS (INCHES) UNLESS OTHERWISE SHOWN.

## CURB OR CURB AND GUTTER REMOVAL AND REPLACEMENT

REVISIONS	
NAME	DATE
M. DE YONG	05/28/91
A. HOUSEH	03/11/94
R. SHAH	02/24/95
R. SHAH	03/02/95
R. SHAH	08/19/96
R. SHAH	09/12/96
R. SHAH	09/19/96
R. SHAH	10/03/96
A. ABBAS	03/21/97
M. GOMEZ	01/22/01

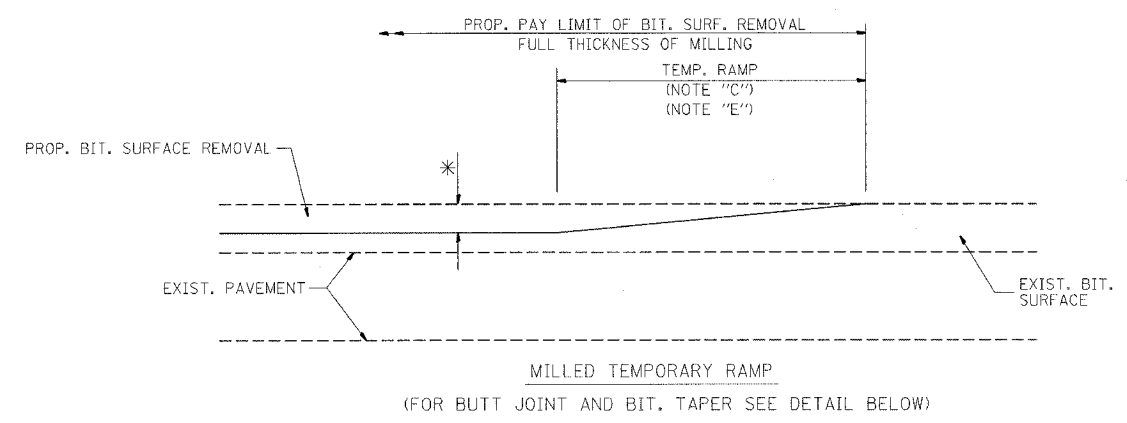
ILLINOIS DEPARTMENT OF TRANSPORTATION  
**CURB OR  
 CURB AND GUTTER  
 REMOVAL AND REPLACEMENT**

SCALE: NONE  
 DATE: 5/24/2005  
 DRAWN BY:  
 CHECKED BY:  
 BD600-06 (BD-24)

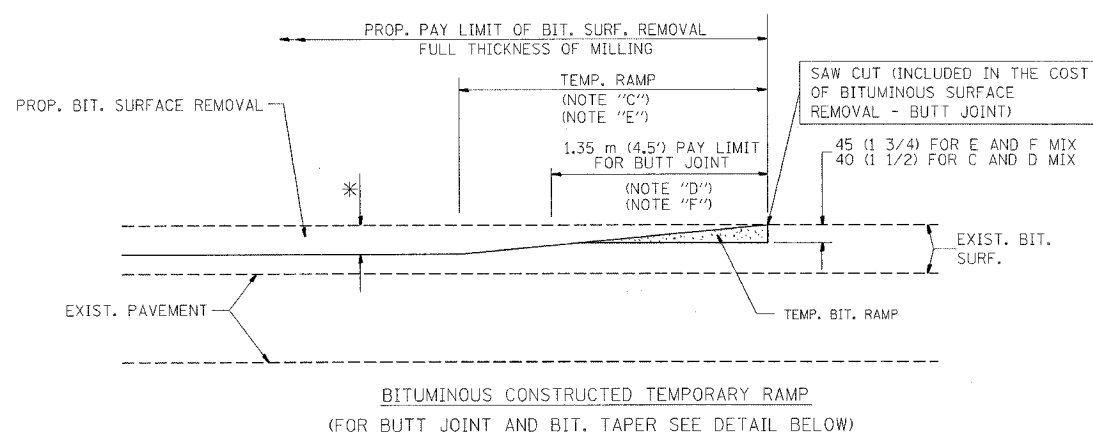
REVISION DATE: 12/06/88

F.A. NO.	SECTION	COUNTY	TOTAL SHEETS	SHEET NO.
346	124N	LaKe	19	15
STA.		TO STA.		
FED. ROAD DIST. NO.		ILLINOIS	FED. AID PROJECT	

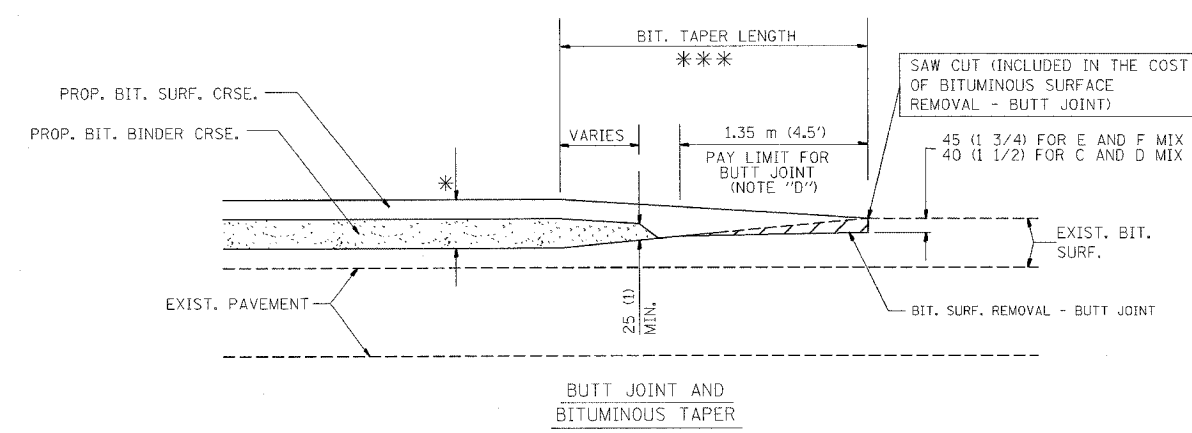
62954



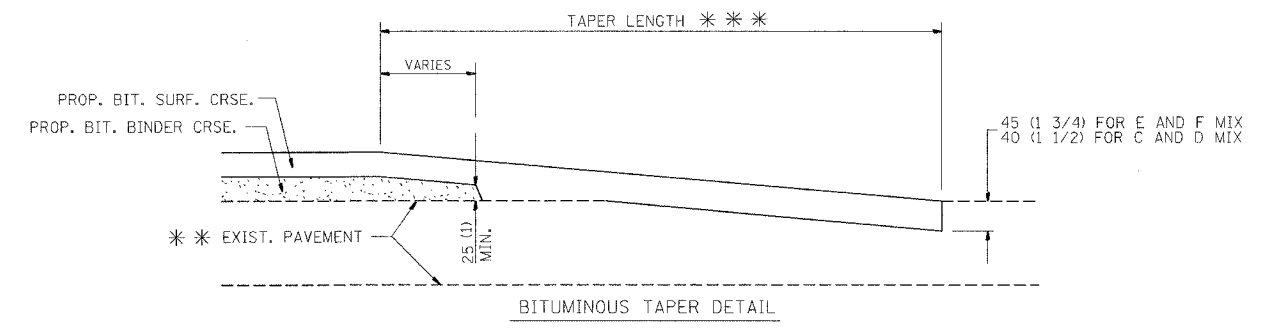
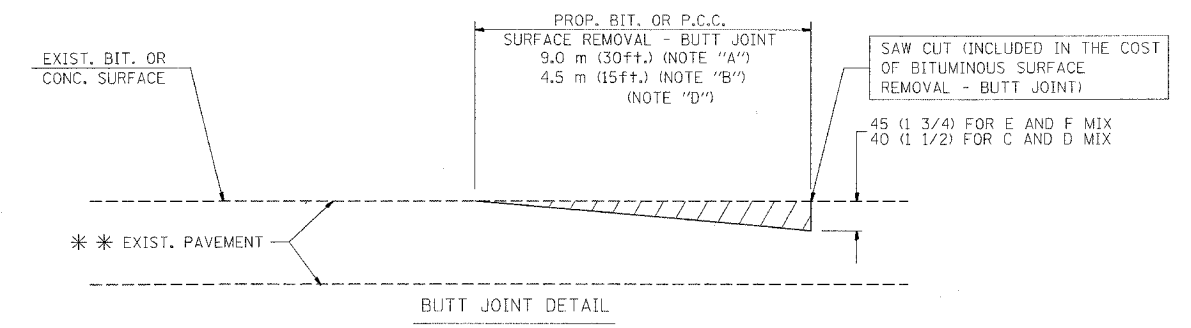
**OPTION 1**



**OPTION 2**  
**TYPICAL TEMPORARY RAMP**



**TYPICAL BUTT JOINT AND BITUMINOUS TAPER FOR MILLING AND RESURFACING**



**TYPICAL BUTT JOINT AND BITUMINOUS TAPER FOR RESURFACING ONLY**

\*\*\* PC CONCRETE, BITUMINOUS OR BITUMINOUS RESURFACED PAVEMENT.

**NOTES**

- A: MAINLINE ROADWAYS AND MAJOR SIDE ROADS.
  - B: MINOR SIDE ROADS.
  - C: THE TEMP. RAMP SHALL BE CONSTRUCTED IMMEDIATELY UPON REMOVAL OF THE EXISTING BITUMINOUS SURFACE.
  - D: THE BUTT JOINT SHALL BE CONSTRUCTED IMMEDIATELY PRIOR TO PLACING THE PROPOSED BITUMINOUS COURSES.
  - E: TAPER THE TEMP. RAMP AT A RATE OF 900 (3 FT.) PER INCH OF MILLING THICKNESS.
  - F: INSTALLATION AND REMOVAL OF THE 1.35 m (4.5') TEMP. BIT. RAMP WILL BE PAID AS "BITUMINOUS SURFACE REMOVAL - BUTT JOINT".
  - G: SEE ARTICLE 406.18 AND 406.24 OF THE STANDARD SPECIFICATIONS FOR "BITUMINOUS AND PCC SURFACE REMOVAL, BUTT JOINT".
- \* SEE TYPICAL SECTIONS FOR MILLING THICKNESS.
- \*\*\* 6.1 m (20') PER 25 (1) RESURFACING (NOTE "A")  
3.0 m (10') PER 25 (1) RESURFACING (NOTE "B")

ALL DIMENSIONS ARE IN MILLIMETERS (INCHES) UNLESS OTHERWISE SHOWN.

ILLINOIS DEPARTMENT OF TRANSPORTATION

**BUTT JOINT AND BITUMINOUS TAPER DETAILS**

REVISIONS	
NAME	DATE
M. DE YONG	6-13-90
M. DE YONG	7-3-90
M. DE YONG	3-27-92
R. SHAH	09/09/94
R. SHAH	10/25/94
A. ABBAS	03/21/97
M. GOMEZ	04/06/01

SCALE: NONE  
DATE PLOTTED: 5/24/2005

DRAWN BY  
CHECKED BY  
BD400-05 (VI-B032)

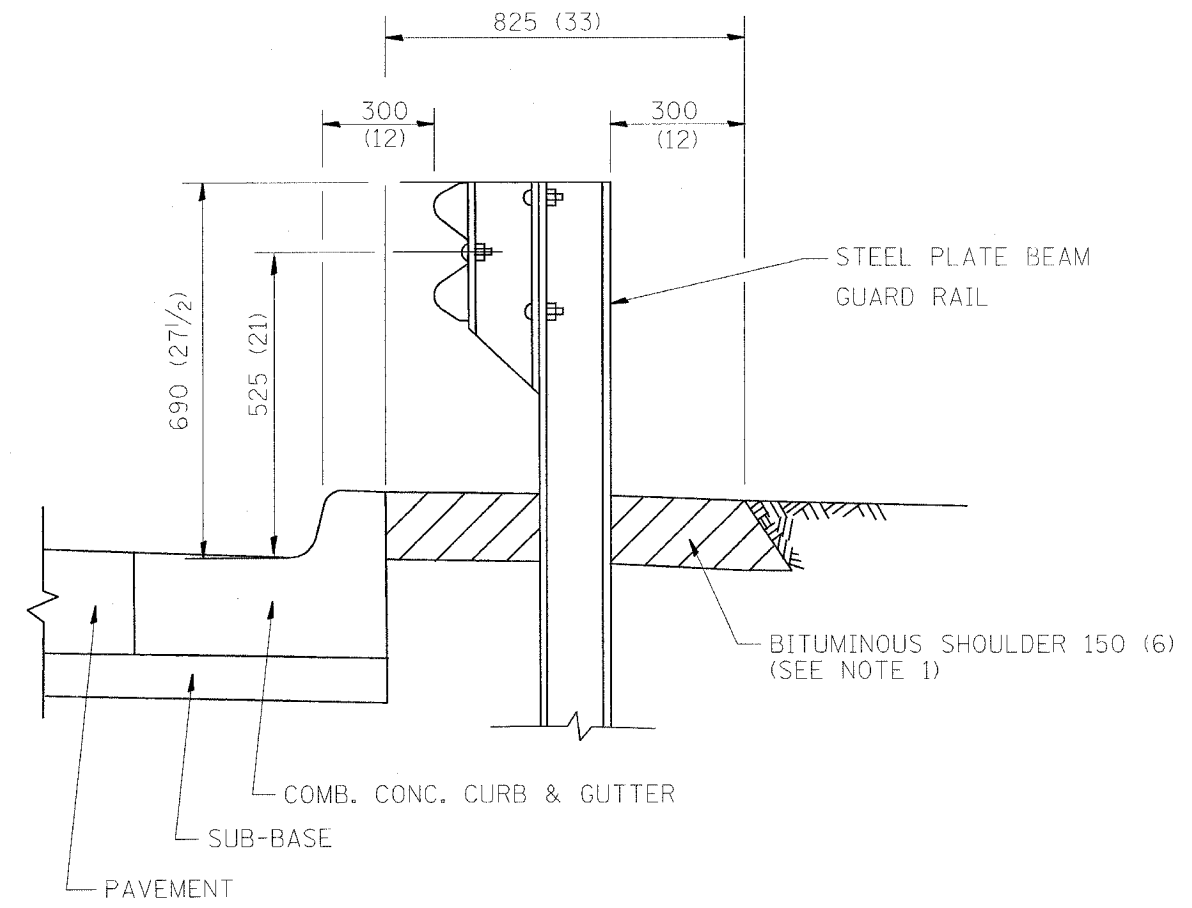
**BASIS OF PAYMENT:**

THE BUTT JOINT WILL BE PAID FOR PER SQUARE METER (SQUARE YARD.) AS "BITUMINOUS SURFACE REMOVAL - BUTT JOINT" OR AS "PORTLAND CEMENT CONCRETE SURFACE REMOVAL - BUTT JOINT".



F.A. RTE.	SECTION	COUNTY	TOTAL SHEETS	SHEET NO.
346	124A	LAKE	19	16
STA.		TO STA.		
FED. ROAD DIST. NO.		ILLINOIS	FED. AID PROJECT	

62954

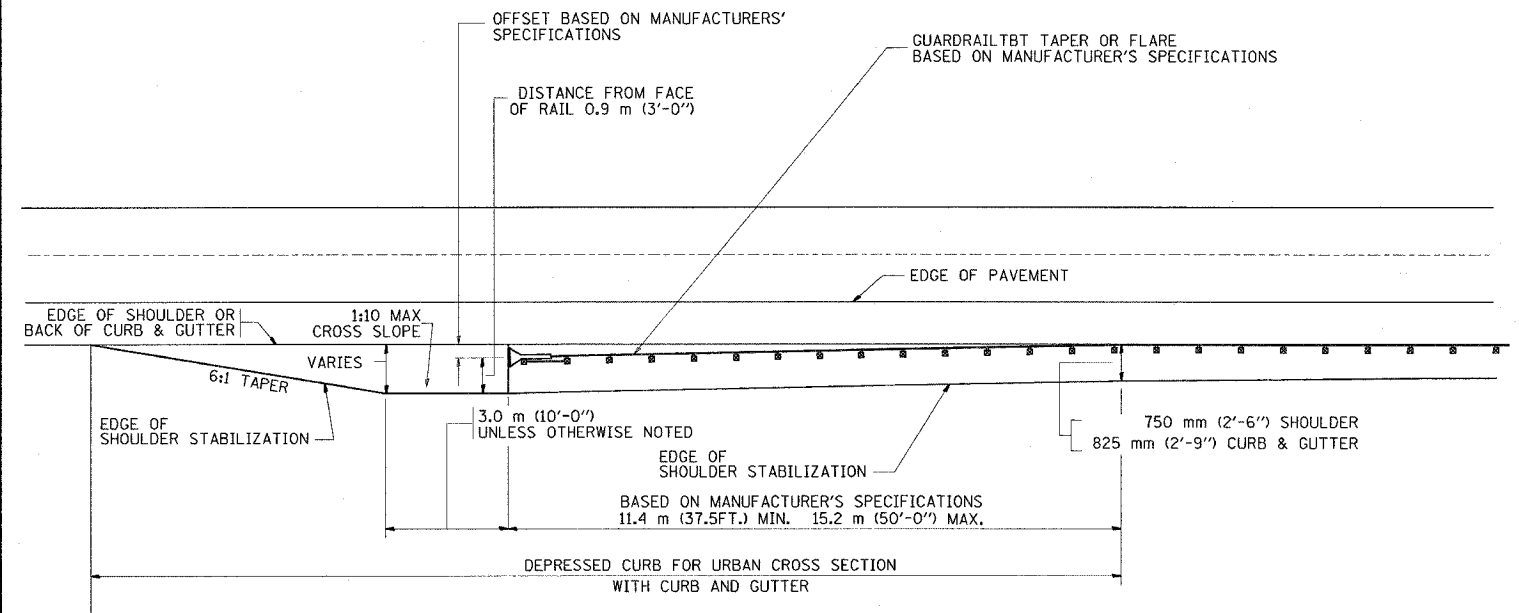


- NOTES:
1. THE BITUMINOUS SHOULDER SHALL EXTEND UNDER THE TRAFFIC BARRIER TERMINAL
  2. GUARD RAIL MAY BE PLACED AT THE BACK OF CURB WHEN DIRECTED BY THE ENGINEER.

BASIS OF PAYMENT: BITUMINOUS SHOULDER 150 (6) WILL BE PAID FOR AT THE CONTRACT UNIT PRICE PER m<sup>2</sup> (sq. yd.) AS "BITUMINOUS SHOULDER 150 (6)."

STEEL PLATE BEAM GUARD RAIL AND TRAFFIC BARRIER TERMINAL, OF THE TYPE SPECIFIED WILL BE PAID FOR SEPARATELY.

DETAILS FOR STEEL PLATE BEAM GUARD RAIL ADJACENT TO CURB AND GUTTER  
[FOR ROADWAY SPEED 60 kmh (35 MPH) TO 70 kmh (45 MPH)]



STABILIZATION AT TBT TY. 1 SPL.

ALL DIMENSIONS ARE IN MILLIMETERS (INCHES) UNLESS OTHERWISE SHOWN.

REVISIONS	
NAME	DATE
M. DE YONG	09-22-90
M. DE YONG	07-14-92
R. SHAH	09/09/94
R. SHAH	10/25/94
R. SHAH	02/23/95
A. ABBAS	03/21/97
E. GOMEZ	08/28/00

ILLINOIS DEPARTMENT OF TRANSPORTATION  
**DETAILS FOR STEEL PLATE BEAM GUARD RAIL ADJACENT TO CURB AND GUTTER**  
**STABILIZATION AT TBT TY 1 SPL.**

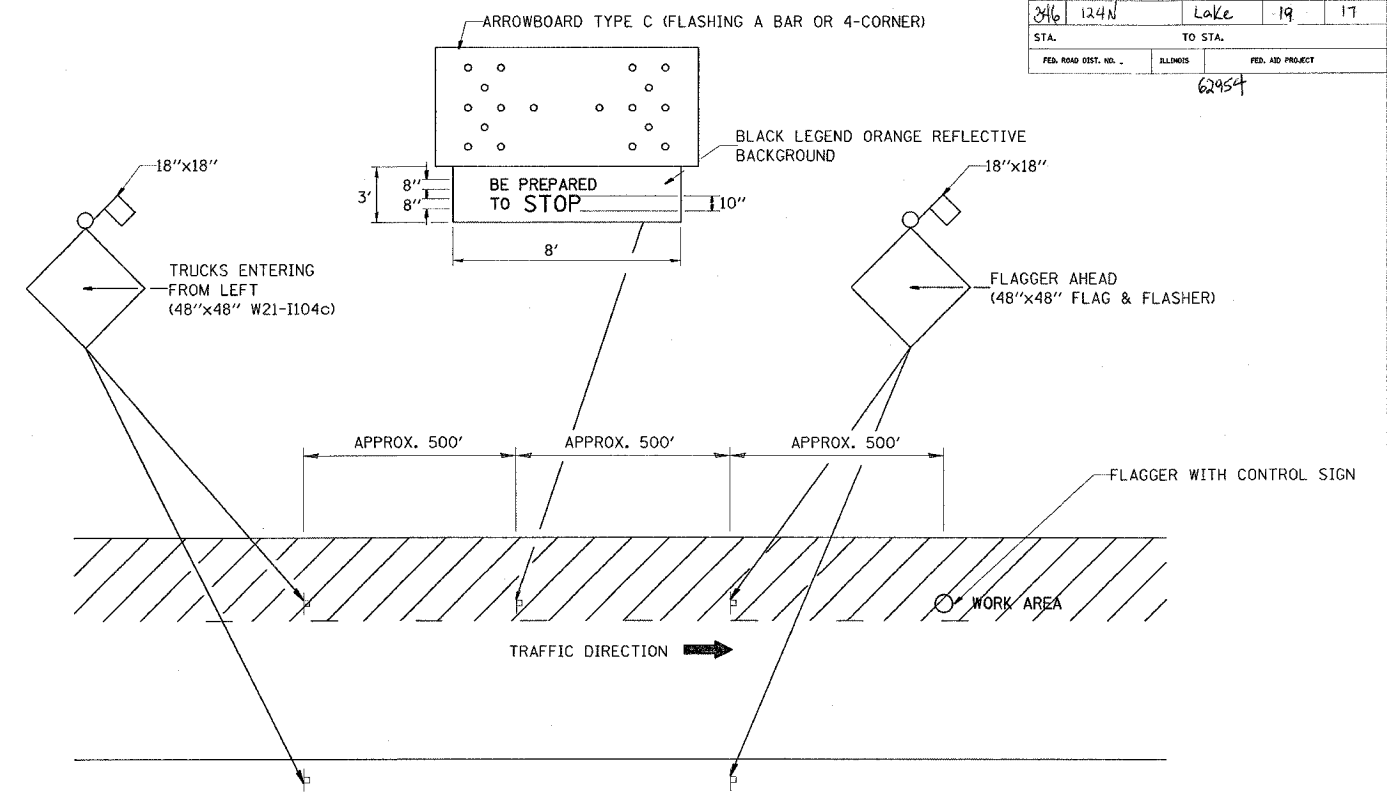
SCALE: NONE  
DATE: 5/24/2005  
DRAWN BY: jls  
CHECKED BY:

BD600-10 (BD 34)  
REVISION DATE: 08/28/00

08:01:21 05/24/2005

5/24/2005  
W:\stis\1\bd34.dgn  
VHBD34  
ababawa

F. A. RTE.	SECTION	COUNTY	TOTAL SHEETS	SHEET NO.
316	124N	Lake	19	17
STA.	TO STA.			
FED. ROAD DIST. NO.	ILLINOIS	FED. AID PROJECT		



**METHOD OF FLAGGING**

**NOTE:**

1. SIGNS SHALL BE MOUNTED AT A MINIMUM CLEARANCE HEIGHT OF 5 FEET
2. ALL SIGNS SHALL BE REMOVED WHEN THE FLAGGING OPERATION CEASES.
3. THIS CASE ALSO APPLIES WHEN THE WORK ZONE IS ON THE RIGHT. UNDER THESE CONDITIONS "TRUCKS ENTERING FROM RIGHT" SIGNS SHALL BE SUBSTITUTED FOR "TRUCKS ENTERING FROM LEFT" SIGNS. ALSO THE ARROWBOARD AND "BE PREPARED TO STOP" SIGNS SHALL BE RELOCATED TO THE RIGHT SIDE OF THE ROAD.
4. WORK ZONE ACCESS POINTS SHOULD BE A MINIMUM OF ONE HALF MILE APART. MEDIAN WORK ZONE ACCESS POINTS SHOULD NOT BE LOCATED OPPOSITE OF EACH OTHER.
5. NIGHTTIME FLAGGING OPERATIONS: THE FLAG STATION SHALL BE LIGHTED WITH ADDITIONAL LIGHTS OTHER THAN STREET LIGHTS. THE FLAGGER CONTROL SIGN AND THE FLAGGER'S VEST SHALL BE REFLECTORIZED. IN ADDITION, THE FLAGGER SHALL HAVE A FLASHLIGHT OR LIGHTED WAND.

REVISIONS	
NAME	DATE
RAY RITCHIE	5/10/00

ILLINOIS DEPARTMENT OF TRANSPORTATION

**METHOD OF FLAGGING**

SCALE: NOT TO SCALE  
DATE 5/24/2005

DRAWN BY C.A.D.  
CHECKED BY  
BM-14  
REVISION DATE: 05/10/00

5/24/2005  
w:\d\staf\dmi4.dgn  
v:\dm14  
abebawa

C:\0774\0511

FINAL SURVEY	CHECKED	BY	DATE
NOTE BOOK	PLOTTED		
AREAS	TEMPLATE		
AREAS	CHECKED		

ORIGINAL SURVEY	CHECKED	BY	DATE
NOTE BOOK	PLOTTED		
AREAS	TEMPLATE		
AREAS	CHECKED		

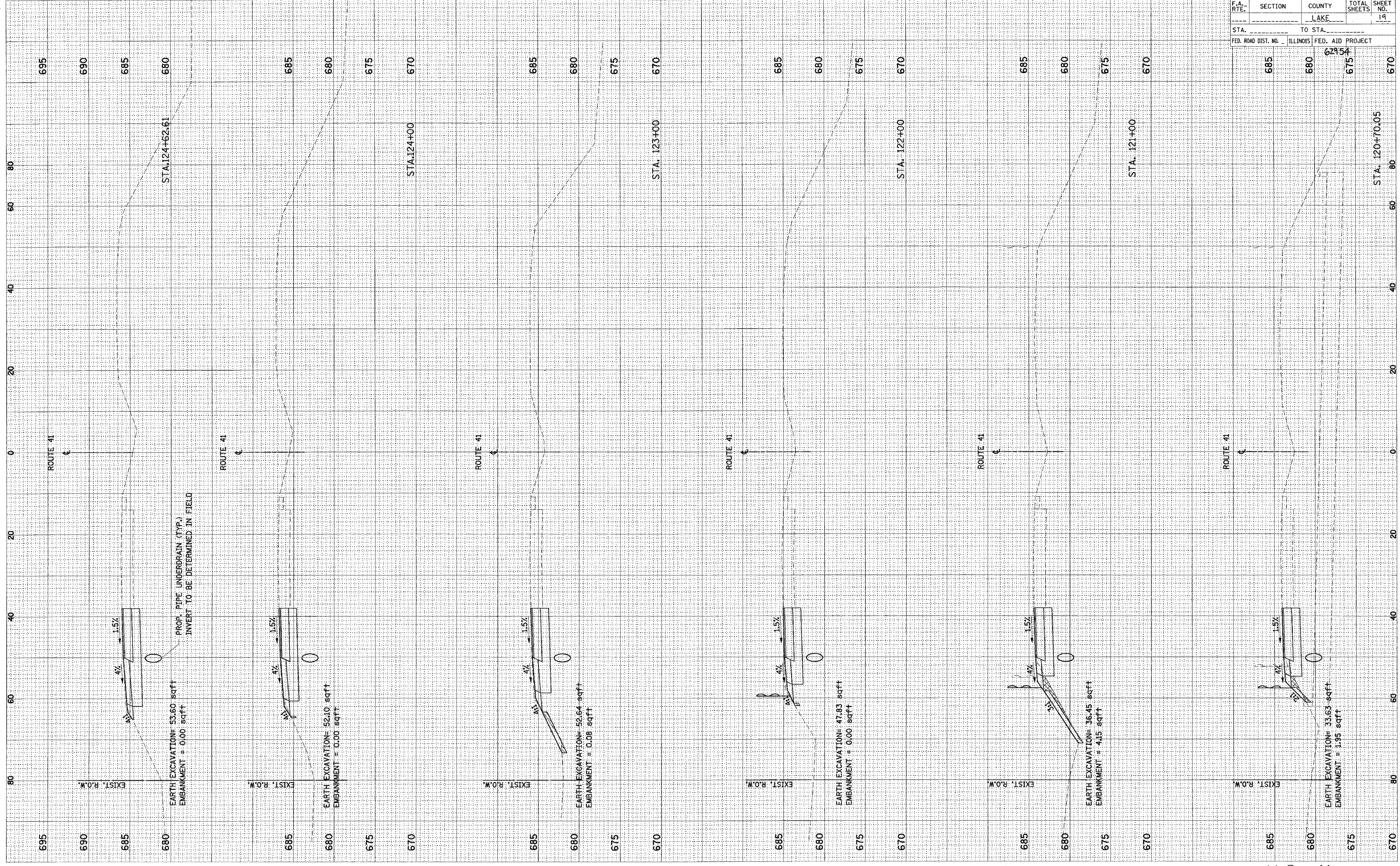


F.A. DIST. NO.	SECTION	COUNTY	TOTAL SHEETS	SHEET NO.
ILLINOIS	124N	LAKE	19	18
FED. AID PROJECT		62954		
STA. 685	TO STA. 680	675		
STA. 115+08.03		670		

U.S. 41

FINAL SURVEY	CORRECTED	BY	DATE
NOTE BOOK	FLIPPED		
NO.	AREAS CHECKED		

ORIGINAL SURVEY	CORRECTED	BY	DATE
NOTE BOOK	FLIPPED		
NO.	AREAS CHECKED		



F.A. RTE.	SECTION	COUNTY	TOTAL SHEETS	SHEET NO.
	LAKE			19
STA.	TO STA.			
FED. ROAD DIST. NO.	ILLINOIS	FED. AID PROJECT		

U.S. 41